



**Have a Question?**  
 Chat with a Product  
 Information Specialist

What can we help you find?

[Products](#) | 
 [Industries](#) | 
 [Resources](#) | 
 [About TE](#) | 
 [My Account](#) | 
 [Innovation](#) | 
 [Support Center](#)

### 320568 Product Details

Share | 
 Print | 
 Email



**320568**

TE Internal Number: 320568

Active

View 3D PDF

#### Ring and Spade Tongue Terminals

Always EU RoHS/ELV Compliant (Statement of Compliance)

**Product Highlights:**

- Terminal Shape = Ring Tongue
- Receptacle Style = Straight
- Body Style = PIDG
- Barrel Type = Closed Barrel
- Wire/Cable Type = Regular Wire

[View all Features](#)

#### Quick Links

- ▶ [Pricing & Availability](#)
- ▶ [Search for Tooling](#)
- ▶ [Product Feature Selector](#)
- ▶ [Contact Us About This Product](#)

[Add to My Part List](#) | 
 [Request Sample](#) | 
 [Find Similar Products](#) | 
 [Buy Product](#)

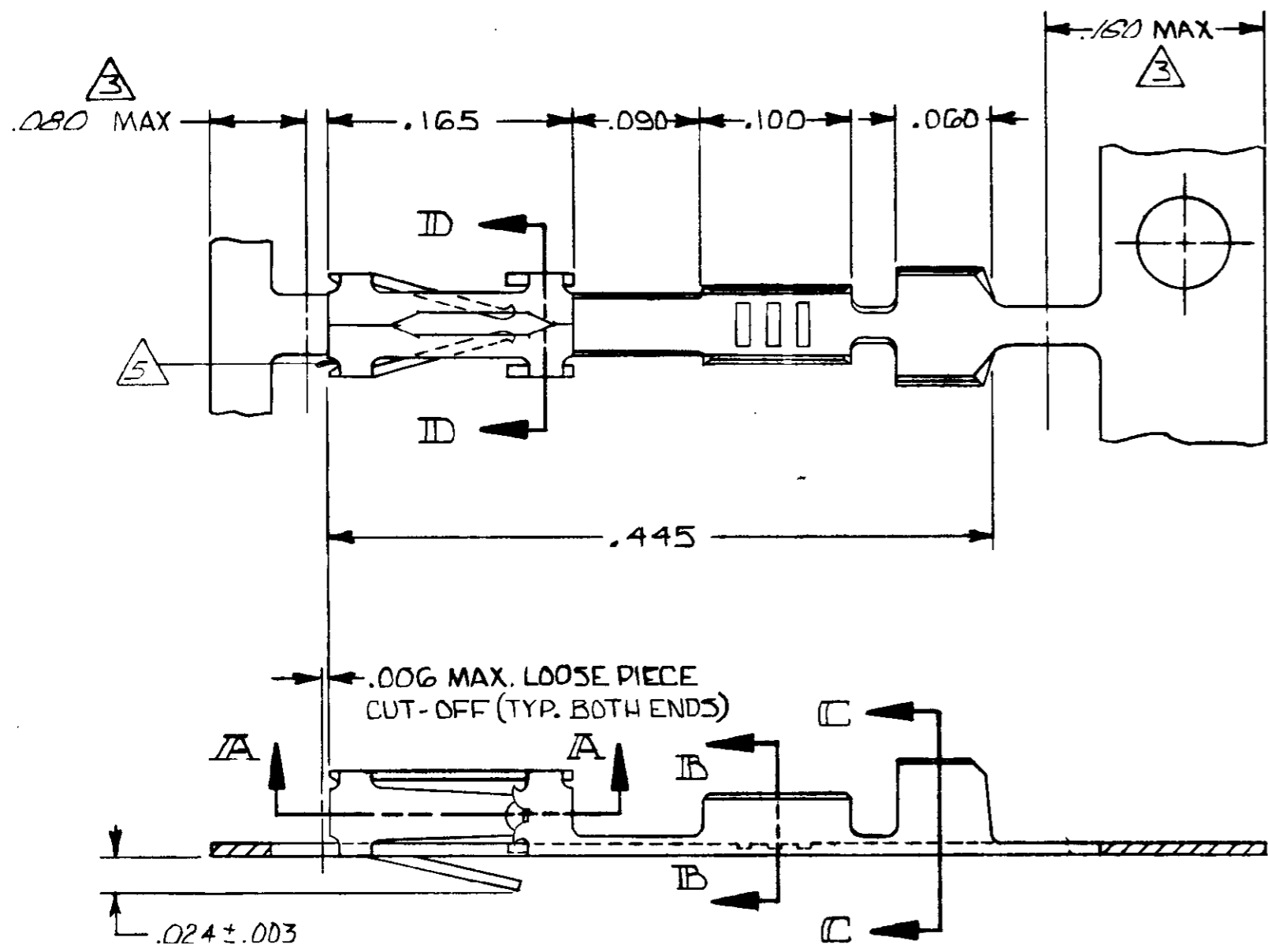
| Documentation & Additional Information  |   |
|---|---|
| <p><b>Product Drawings:</b></p> <ul style="list-style-type: none"> <li>• <a href="#">TERMINAL, RING TONGUE, PIDG WIRE SIZE: 12-10 AWG (PDF, English)</a></li> </ul> <p><b>Catalog Pages/Data Sheets:</b></p> <ul style="list-style-type: none"> <li>• None Available</li> </ul> <p><b>Product Specifications:</b></p> <ul style="list-style-type: none"> <li>• None Available</li> </ul> <p><b>Application Specifications:</b></p> <ul style="list-style-type: none"> <li>• <a href="#">Pre-Insulated Diamond Grip (PIDG) Terminals, Splices... (PDF, English)</a></li> </ul> <p><b>Instruction Sheets:</b></p> <ul style="list-style-type: none"> <li>• None Available</li> </ul> <p><b>CAD Files: (CAD Format &amp; Compression Information)</b></p> <ul style="list-style-type: none"> <li>• <a href="#">2D Drawing (DXF, Version T3)</a></li> <li>• <a href="#">3D Model (IGES, Version T3)</a></li> <li>• <a href="#">3D Model (STEP, Version T3)</a></li> </ul> | <p><b>Related Products:</b></p> <ul style="list-style-type: none"> <li>• <a href="#">Tooling</a></li> </ul> |

[List all Documents](#)

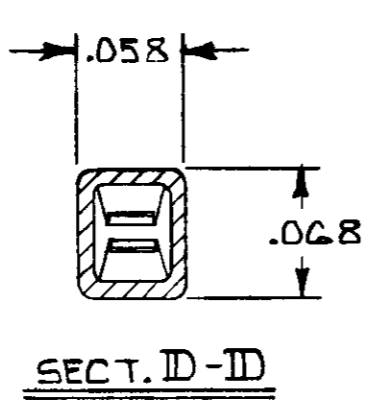
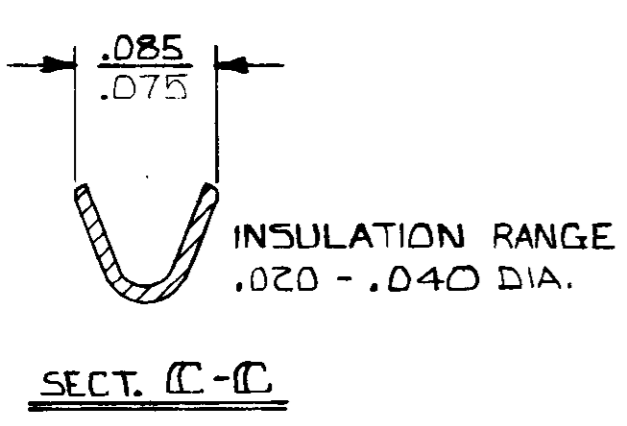
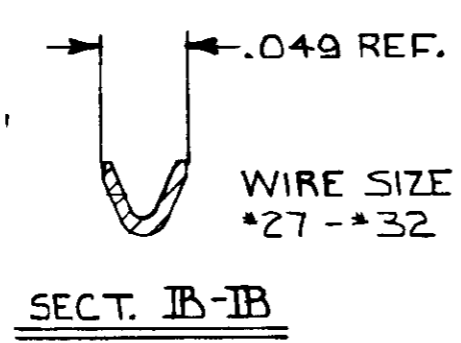
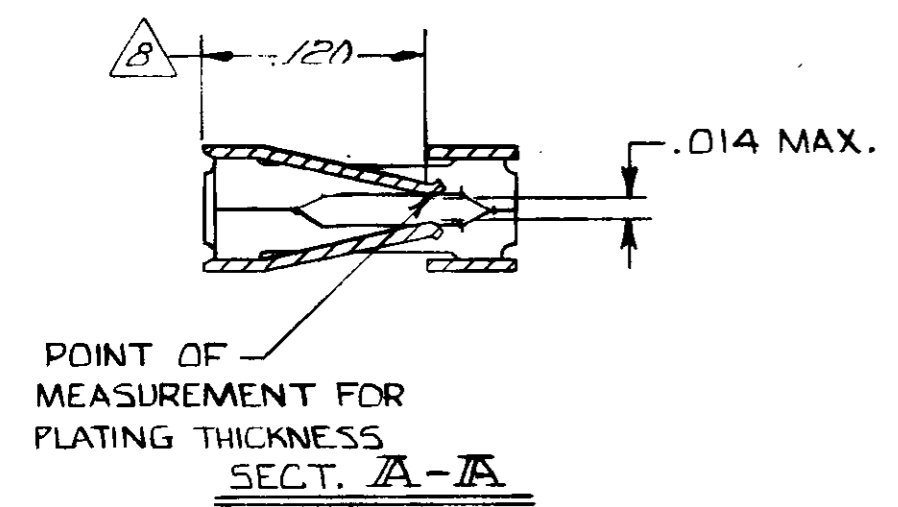
| Product Features (Please use the Product Drawing for all design activity)   |   |
|---|---|
| <p><b>Product Type Features:</b></p> <ul style="list-style-type: none"> <li>• <a href="#">Terminal Shape</a> = Ring Tongue</li> <li>• <a href="#">Receptacle Style</a> = Straight</li> <li>• <a href="#">Barrel Type</a> = Closed Barrel</li> <li>• <a href="#">Wire/Cable Type</a> = Regular Wire</li> <li>• <a href="#">Insulation</a> = Yes</li> <li>• <a href="#">Insulation Support</a> = Insulation Support</li> <li>• <a href="#">Stud Diameter (mm [in])</a> = 4.17 [0.164]</li> <li>• Stud Size = 8 [M4]</li> <li>• <a href="#">Shape</a> = RING-041</li> <li>• <a href="#">Heavy Duty</a> = No</li> <li>• <a href="#">Finish</a> = Tin</li> <li>• Color = Yellow</li> </ul> <p><b>Electrical Characteristics:</b></p> <ul style="list-style-type: none"> <li>• Voltage (VAC) = 300</li> </ul> <p><b>Termination Features:</b></p> <ul style="list-style-type: none"> <li>• Wire/Cable Size (CMA) = 5,180 - 13,100</li> </ul> <p><b>Dimensions:</b></p> <ul style="list-style-type: none"> <li>• <a href="#">Insulation Diameter (mm [in])</a> = 5.84 [.230] Max.</li> </ul> | <p><b>Body Features:</b></p> <ul style="list-style-type: none"> <li>• <a href="#">Body Style</a> = PIDG</li> <li>• <a href="#">Wire Range (mm [AWG])</a> = 3.00-6.00<sup>2</sup> [12-10]</li> <li>• <a href="#">Material</a> = Copper</li> <li>• Tongue Material Thickness (mm [in]) = 1.07 [0.042]</li> <li>• <a href="#">Insulation Material</a> = Nylon</li> </ul> <p><b>Contact Features:</b></p> <ul style="list-style-type: none"> <li>• Class = 1 &amp; 2</li> </ul> <p><b>Industry Standards:</b></p> <ul style="list-style-type: none"> <li>• <a href="#">Government/Industry Qualification</a> = Yes</li> <li>• <a href="#">Government/Industry Part Number</a> = MS25036-156</li> <li>• <a href="#">RoHS/ELV Compliance</a> = RoHS compliant, ELV compliant</li> <li>• <a href="#">Lead Free Solder Processes</a> = Not relevant for lead free process</li> <li>• <a href="#">RoHS/ELV Compliance History</a> = Always was RoHS compliant</li> </ul> <p><b>Packaging Features:</b></p> <ul style="list-style-type: none"> <li>• <a href="#">Packaging Method</a> = Loose Piece</li> </ul> <p><b>Other:</b></p> <ul style="list-style-type: none"> <li>• Brand = AMP</li> <li>• Comment = Available On-Tape for Automatic Termination.</li> </ul> |

THIS DRAWING IS UNPUBLISHED. RELEASED FOR PUBLICATION  
 (C) COPYRIGHT ALL RIGHTS RESERVED.

| REVISIONS |   |      |     |                           |         |          |
|-----------|---|------|-----|---------------------------|---------|----------|
| P         | F | ZONE | LTR | DESCRIPTION               | DATE    | APPROVED |
|           |   |      | M2  | REVISED PER ECO-11-005140 | 31MAR11 | HMR      |



- 1 .00030 GOLD ON CONTACT AREA, GOLD FLASH ON REMAINDER, OVER .000050 NICKEL.
- 2 .00015 GOLD ON CONTACT AREA, GOLD FLASH ON THE REMAINDER, OVER .000050 NICKEL.
- 3 GOLD PLATING NOT REQUIRED IN THIS AREA.
- 4 .000100-.000200 BRIGHT TIN OVER .000030 NICKEL.
- 5 CUT OUTS ON BOX AT MANUFACTURER'S OPTION.
- 6 .000050 GOLD ON CONTACT AREA, GOLD FLASH ON THE REMAINDER, OVER .000050 NICKEL.
- 7 .000015 GOLD ON CONTACT AREA, .000050 NICKEL OVER THE ENTIRE TERMINAL.
- 8 POINT OF MEASUREMENT FOR PLATING THICKNESS (INSIDE BEAMS).
- 9 OBSOLETE PART NUMBER.
- 10 SUPERSEDED BY 102917-2.
- 11 OBSOLETE PARTS: OBSOLETE CIS STREAMLINING PER D.RENAUD/D.SINISI



|                      |            |            |
|----------------------|------------|------------|
| OBSOLETE             | 1-102917-4 | 1-102917-3 |
| OBSOLETE             | 1-102917-2 | 1-102917-1 |
|                      | 102917-6   | 102917-5   |
| OBSOLETE             | 102917-4   | 102917-3   |
|                      | 102917-2   | 102917-1   |
| LOOSE PIECE PART NO. | FINISH     | PART NO    |

|   |                              |  |              |
|---|------------------------------|--|--------------|
| UNLESS OTHERWISE SPECIFIED DIMENSIONS ARE IN INCHES.<br>TOLERANCES ON:<br>DECIMALS ± .005<br>ANGLES | CONTRACT NO                  | TE Connectivity<br>NAME<br>CONTACT, FEMALE, MOD IV,<br>CRIMP SNAP-IN |              |
|   | DR <i>S.A. Cook</i> 3/15/82  |  |              |
| MATERIAL<br>BERYLLIUM COPPER<br>.008 THK.   | CHR <i>S.A. Cook</i> 3/15/82 | SIZE   | FSCM NO      |
|   | APPD <i>R. Chiba</i> 3/25/82 | C  | 00779        |
| FINISH<br>SEE TABLE   | APPD <i>M. Yung</i> 3/26/82  | DRAWING NO   | 102917       |
|   | DSGN APPD                    | SCALE  | SHEET 1 OF 1 |
| OTHER APPD  |                              |  |              |

102917