



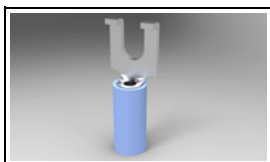
Have a Question?
 Chat with a Product
 Information Specialist

What can we help you find?

[Products](#) |
 [Industries](#) |
 [Resources](#) |
 [About TE](#) |
 [My Account](#) |
 [Innovation](#) |
 [Support Center](#)

320861 Product Details

[Share](#) |
 [Print](#) |
 [Email](#)



320861

TE Internal Number: 320861

Active

[View 3D PDF](#)

Ring and Spade Tongue Terminals

Always EU RoHS/ELV Compliant (Statement of Compliance)

Product Highlights:

- Terminal Shape = Spade Tongue, Flanged
- Receptacle Style = Straight
- Body Style = PIDG
- Barrel Type = Closed Barrel
- Wire/Cable Type = Regular Wire

[View all Features](#)

Quick Links

- ▶ [Pricing & Availability](#)
- ▶ [Search for Tooling](#)
- ▶ [Product Feature Selector](#)
- ▶ [Contact Us About This Product](#)

[Add to My Part List](#) |
 [Request Sample](#) |
 [Find Similar Products](#) |
 [Buy Product](#)

Documentation & Additional Information

Product Drawings:

- [terminal, pidg, nylon flanged spade 16-14 \(PDF, English\)](#)

Catalog Pages/Data Sheets:

- None Available

Product Specifications:

- None Available

Application Specifications:

- [Pre-Insulated Diamond Grip \(PIDG\) Terminals, Splices... \(PDF, English\)](#)

Instruction Sheets:

- None Available

CAD Files: [\(CAD Format & Compression Information\)](#)

- [2D Drawing \(DXF, Version P\)](#)
- [3D Model \(IGES, Version P\)](#)
- [3D Model \(STEP, Version P\)](#)

[List all Documents](#)

Related Products:

- [Tooling](#)

Product Features (Please use the Product Drawing for all design activity)

Product Type Features:

- Terminal Shape = Spade Tongue, Flanged
- Receptacle Style = Straight
- Barrel Type = Closed Barrel
- Wire/Cable Type = Regular Wire
- Insulation = Yes
- Insulation Support = Insulation Support
- Stud Diameter (mm [in]) = 3.51 [0.138]
- Stud Size = 6 [M3.5]
- Shape = SPADE-024
- Heavy Duty = No
- Finish = Tin
- Color = Blue

Electrical Characteristics:

- Voltage (VAC) = 300

Termination Features:

- Wire/Cable Size (CMA) = 2,050 - 5,180

Dimensions:

- Insulation Diameter (mm [in]) = 4.32 [.170] Max.

Body Features:

- Body Style = PIDG
- Wire Range (mm [AWG]) = 1.25-2.00² [16-14]
- Material = Copper
- Tongue Material Thickness (mm [in]) = 0.84 [0.033]
- Insulation Material = Nylon

Industry Standards:

- Government/Industry Qualification = No
- RoHS/ELV Compliance = RoHS compliant, ELV compliant
- Lead Free Solder Processes = Not relevant for lead free process
- RoHS/ELV Compliance History = Always was RoHS compliant

Packaging Features:

- Packaging Method = Loose Piece
- Packaging Quantity = 1,000 Box/Carton

Other:

- Brand = AMP

Corporate Information

[About TE](#)
[Investors](#)

Quick Links

[Distributor Inventory](#)
[Product Cross Reference](#)

Customer Support

[Email or Chat With Us](#)
[Find a Phone Number](#)

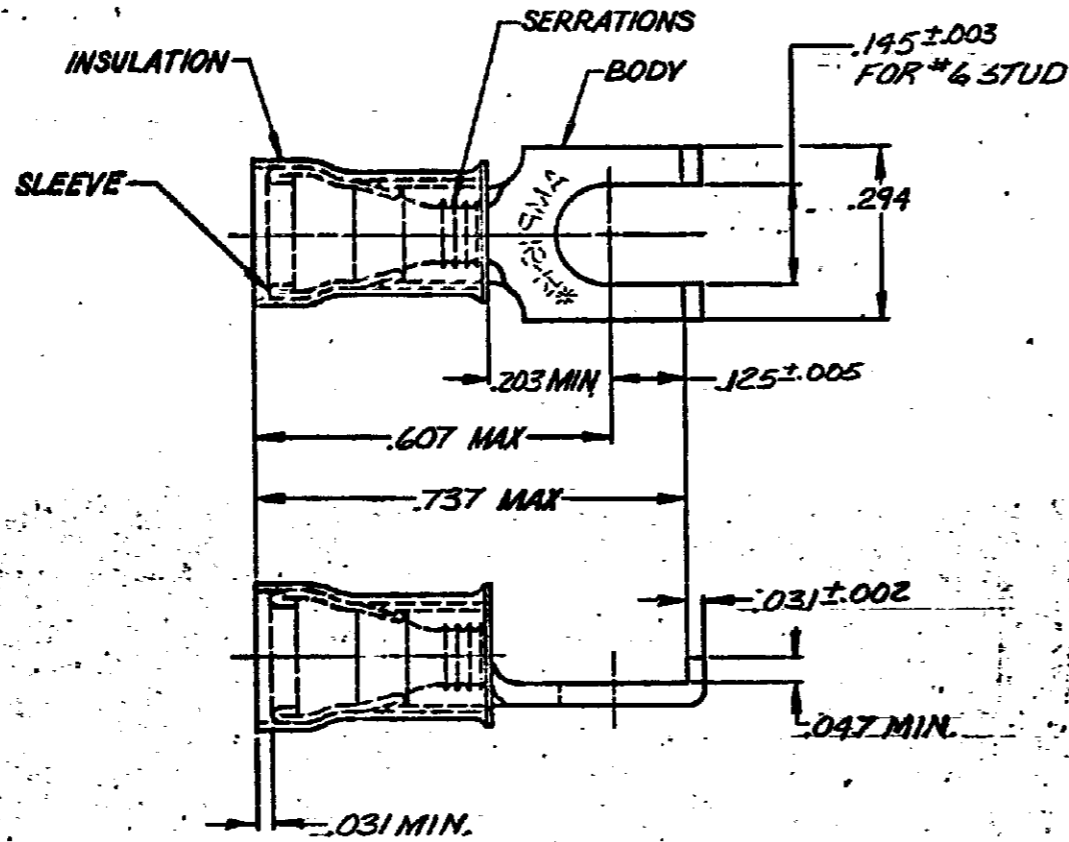
DRAWING MADE IN THIRD ANGLE PROJECTION

THIS DRAWING IS UNPUBLISHED. RELEASED FOR PUBLICATION

© COPYRIGHT

LOC 6 DIST 14

REVISIONS						
P	F	ZONE	LTR	DESCRIPTION	DATE	APPROVED
			P1	REVISED PER ECO-11-005294	11APR11	HMR



QTY	PACKAGE TYPE	PART NO.	
—	LOOSE PIECE	320861	
5,000	ON TAPE, REEL	2-	-1
—	LOOSE PIECE	2-	-2
5,000	ON TAPE, REEL	2-	-3
1,000	ON TAPE, LG. BOX	2-	5
100	LOOSE PC, BOX	8-320861-	1

OBSELETE

WIRE INS. DIA.	MATERIAL AND FINISH	PART NO
.115 TO .170	BODY: COPPER QQ-C-576 TIN PL MIL-T-10727	8-320861-1
.105 TO .150	SLEEVE: COPPER QQ-C-576 TIN PL MIL-T-10727	2- -3
.115 TO .170	INSULATION: NYLON COLOR: BLUE	2- -2
.115 TO .170		2- -1
		320861

UNLESS OTHERWISE SPECIFIED DIMENSIONS ARE IN INCHES. TOLERANCES ON: DECIMALS: .008 ANGLES: 2	CONTRACT NO		
	DR: P. Fortney 7-29-85		
MATERIAL	CHK: P. Muth 8-17-85	NAME: TERMINAL, PIDG, 11YLO11	
SEE TABLE	APPO: 2-1-85	FLANGED SPADE 16-14	
FINISH	APPO	SIZE: B	FSCM NO: 00779
	SEE TABLE	DSGN APPD	DRAWING NO: 320861
	OTHER APPD	SCALE: NTS	SHEET: —

CUSTOMER DRAWING