



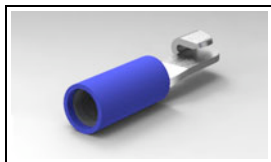
Have a Question?
Chat with a Product Information Specialist

What can we help you find?

[Products](#) [Industries](#) [Resources](#) [About TE](#) [My Account](#) [Innovation](#) [Support Center](#)

32448 Product Details

[Share](#) [Print](#) [Email](#)



32448

TE Internal Number: 32448

Active

[View 3D PDF](#)

Splices - Closed Barrel

Always EU RoHS/ELV Compliant (Statement of Compliance)

Product Highlights:

- Splice
- Not Sealed
- Splice Type = Knife Disconnect
- Body Style = PIDG
- Insulated

[View all Features](#)

Quick Links

- ▶ [Pricing & Availability](#)
- ▶ [Search for Tooling](#)
- ▶ [Product Feature Selector](#)
- ▶ [Contact Us About This Product](#)

[Add to My Part List](#) [Request Sample](#) [Find Similar Products](#) [Buy Product](#)

Documentation & Additional Information	
<p>Product Drawings:</p> <ul style="list-style-type: none"> • TERMINAL, PIDG KNIFE DISCONNECT, WIRE SIZE 16-14 AWG (PDF, English) <p>Catalog Pages/Data Sheets:</p> <ul style="list-style-type: none"> • None Available <p>Product Specifications:</p> <ul style="list-style-type: none"> • None Available <p>Application Specifications:</p> <ul style="list-style-type: none"> • None Available <p>Instruction Sheets:</p> <ul style="list-style-type: none"> • Assembly Instructions for Knife Disconnects (PDF, English) <p>CAD Files: (CAD Format & Compression Information)</p> <ul style="list-style-type: none"> • 2D Drawing (DXF, Version G1) • 3D Model (IGES, Version G1) • 3D Model (STEP, Version G1) <p style="text-align: right;">List all Documents</p>	<p>Related Products:</p> <ul style="list-style-type: none"> • Tooling

Product Features (Please use the Product Drawing for all design activity)	
<p>Product Type Features:</p> <ul style="list-style-type: none"> • Product Type = Splice • Sealed = No • Splice Type = Knife Disconnect • Insulation = Yes • Insulation Support = Insulation Support • Finish = Tin • Color = Blue <p>Termination Features:</p> <ul style="list-style-type: none"> • Wire/Cable Size (CMA) = 2,050 - 5,180 <p>Dimensions:</p> <ul style="list-style-type: none"> • Insulation Diameter (mm [in]) = 4.32 [.170] Max. <p>Body Features:</p> <ul style="list-style-type: none"> • Body Style = PIDG • Wire Range (mm [AWG]) = 1.25-2.00² [16-14] • Material = Copper • Insulation Sleeve Material = Nylon 	<p>Industry Standards:</p> <ul style="list-style-type: none"> • Government/Industry Qualification = No • RoHS/ELV Compliance = RoHS compliant, ELV compliant • Lead Free Solder Processes = Not relevant for lead free process • RoHS/ELV Compliance History = Always was RoHS compliant <p>Packaging Features:</p> <ul style="list-style-type: none"> • Packaging Method = Loose Piece <p>Other:</p> <ul style="list-style-type: none"> • Brand = AMP

Corporate Information

[About TE](#)

Quick Links

[Distributor Inventory](#)

Customer Support

[Email or Chat With Us](#)

THIS DRAWING IS UNPUBLISHED.

RELEASED FOR PUBLICATION

LOC

DIST

REVISIONS

© COPYRIGHT - By -

ALL RIGHTS RESERVED.

G

02

P

LTR

DESCRIPTION

DATE

DWN

APVD

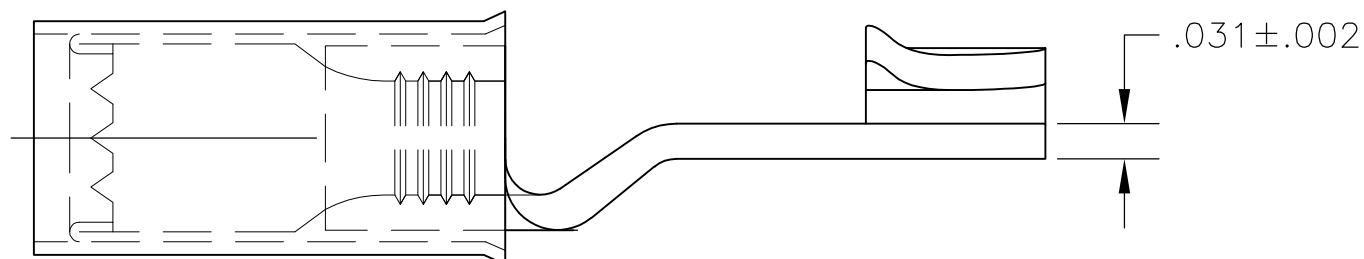
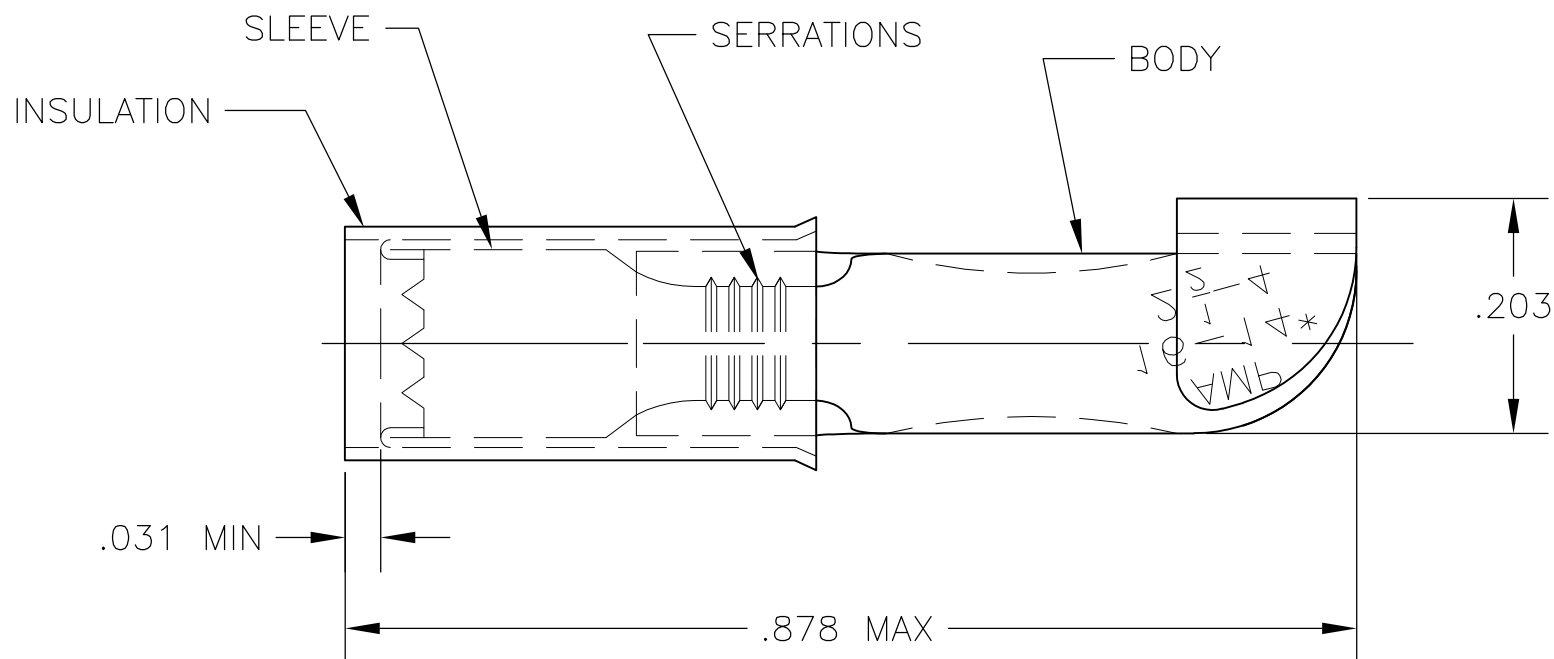
G2

REVISED PER ECO-11-004917

11MAR11

RK

HMR



100	LOOSE PIECE, BOX	INSULATION: NYLON, COLOR BLUE SLEEVE: COPPER PER ASTM B152 BODY: COPPER PER ASTM B152 TIN PLATE PER ASTM B545	8-32448-1
4000	32448 ON TAPE		2-32448-1
1	WIRE TERMINAL		32448
QTY	DESCRIPTION	MATERIAL	PART NO

THIS DRAWING IS A CONTROLLED DOCUMENT.		DWN jr_ruth 13MAR09	TE Connectivity	
DIMENSIONS: INCHES		CHK TOM MICHIELUTTI 13MAR09		
TOLERANCES UNLESS OTHERWISE SPECIFIED:		APVD TOM MICHIELUTTI 13MAR09	NAME TERMINAL, PIDG KNIFE DISONNECT, WIRE SIZE 16-14 AWG	
0 PLC ± -		PRODUCT SPEC	-	
1 PLC ± -		APPLICATION SPEC	-	
2 PLC ± -		WEIGHT	-	
3 PLC ± .008		SIZE	CAGE CODE	DRAWING NO
4 PLC ± -		A3	00779	C-32448
ANGLES ± 5'		RESTRICTED TO		
MATERIAL SEE TABLE		FINISH SEE TABLE		
CUSTOMER DRAWING		SCALE	SHEET	REV
		8:1	1 OF 1	G2