



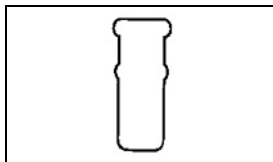
**Have a Question?**  
 Chat with a Product Information Specialist

What can we help you find?

[Products](#) [Industries](#) [Resources](#) [About TE](#) [My Account](#) [Innovation](#) [Support Center](#)

**324485 Product Details**

[Share](#) [Print](#) [Email](#)



**324485**

TE Internal Number: 324485

Active

[View 3D PDF](#)

**Splices - Closed Barrel**

Always EU RoHS/ELV Compliant (Statement of Compliance)

**Product Highlights:**

- Accessory
- Accessory Type = Wire Caps for Unstripped Wire
- Not Sealed
- Body Style = PIDG
- Insulated

[View all Features](#)

**Quick Links**

- ▶ [Pricing & Availability](#)
- ▶ [Search for Tooling](#)
- ▶ [Product Feature Selector](#)
- ▶ [Contact Us About This Product](#)

[Add to My Part List](#) [Request Sample](#) [Find Similar Products](#) [Buy Product](#)

Documentation & Additional Information	
<p><b>Product Drawings:</b></p> <ul style="list-style-type: none"> <li>• <a href="#">SPARE WIRE CAP,RED</a> (PDF, English)</li> </ul> <p><b>Catalog Pages/Data Sheets:</b></p> <ul style="list-style-type: none"> <li>• None Available</li> </ul> <p><b>Product Specifications:</b></p> <ul style="list-style-type: none"> <li>• None Available</li> </ul> <p><b>Application Specifications:</b></p> <ul style="list-style-type: none"> <li>• <a href="#">Pre-Insulated Diamond Grip (PIDG) Terminals, Splices...</a> (PDF, English)</li> </ul> <p><b>Instruction Sheets:</b></p> <ul style="list-style-type: none"> <li>• None Available</li> </ul> <p><b>CAD Files:</b> (<a href="#">CAD Format &amp; Compression Information</a>)</p> <ul style="list-style-type: none"> <li>• <a href="#">2D Drawing</a> (DXF, Version N)</li> <li>• <a href="#">3D Model</a> (IGES, Version N)</li> <li>• <a href="#">3D Model</a> (STEP, Version N)</li> </ul> <p style="text-align: right;"><a href="#">List all Documents</a></p>	<p><b>Related Products:</b></p> <ul style="list-style-type: none"> <li>• <a href="#">Tooling</a></li> </ul>

Product Features (Please use the Product Drawing for all design activity)	
<p><b>Product Type Features:</b></p> <ul style="list-style-type: none"> <li>• Product Type = Accessory</li> <li>• Sealed = No</li> <li>• Accessory Type = Wire Caps for Unstripped Wire</li> <li>• Insulation = Yes</li> <li>• Insulation Support = Insulation Support</li> <li>• Finish = Tin</li> <li>• Color = Red</li> </ul> <p><b>Dimensions:</b></p> <ul style="list-style-type: none"> <li>• Insulation Diameter (mm [in]) = 2.03-2.92 [.080-.115]</li> </ul> <p><b>Body Features:</b></p> <ul style="list-style-type: none"> <li>• Body Style = PIDG</li> <li>• Material = Copper</li> </ul>	<p><b>Industry Standards:</b></p> <ul style="list-style-type: none"> <li>• Government/Industry Qualification = No</li> <li>• RoHS/ELV Compliance = RoHS compliant, ELV compliant</li> <li>• Lead Free Solder Processes = Not relevant for lead free process</li> <li>• RoHS/ELV Compliance History = Always was RoHS compliant</li> </ul> <p><b>Packaging Features:</b></p> <ul style="list-style-type: none"> <li>• Packaging Method = Loose Piece</li> </ul> <p><b>Other:</b></p> <ul style="list-style-type: none"> <li>• Brand = AMP</li> </ul>

**Corporate Information**

- [About TE](#)
- [Investors](#)
- [News Room](#)
- [Supplier Portal](#)
- [Careers](#)

**Quick Links**

- [Distributor Inventory](#)
- [Product Cross Reference](#)
- [Documents & Drawings](#)
- [Product Compliance Support Center](#)
- [Site Map](#)

**Customer Support**

- [Email or Chat With Us](#)
- [Find a Phone Number](#)
- [Knowledge Base](#)
- [Manage Your Account](#)

4

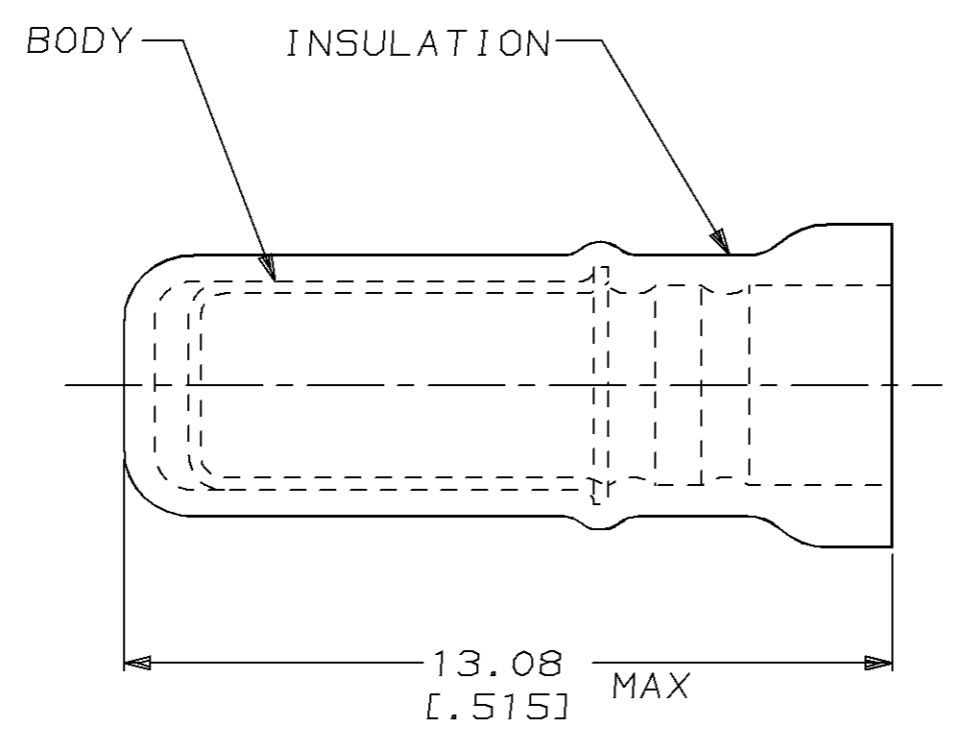
3

2

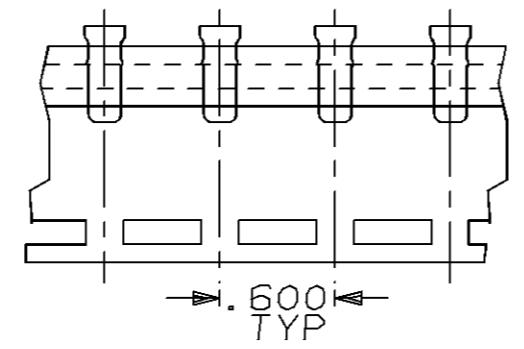
1

THIS DRAWING IS UNPUBLISHED. RELEASED FOR PUBLICATION ,19 .  
 © COPYRIGHT 19 BY AMP INCORPORATED. ALL RIGHTS RESERVED.

LOC	DIST	REVISIONS			
P	LTR	DESCRIPTION	DATE	DWN	APVD
G	14				
	N	REV / REDRAWN / 0720-0482-95 & 0720-0002-95	14FEB95	LO	ME



1. USE FOR AN UNSTRIPPED (SINGLE) WIRE END ONLY
2. WIRE INSUL DIA, 2.03-2.92 [0.080-.115]



SPARE WIRE CAPS ON TAPE  
(SCALE 1:1)

QTY	PACKAGE TYPE	PART NO
100	LOOSE PIECE, BOX	8-324485-1
4000	ON TAPE, REEL	2-324485-1
1000	LOOSE PIECE	324485

AMP INCORPORATED  
CUSTOMER SERVICE SYSTEM

FOR ADDITIONAL PRODUCT INFORMATION OR COPIES OF DRAWINGS AND TECHNICAL DOCUMENTS	PRODUCT INFORMATION CENTER 1-800-522-6752
FOR APPLICATION TOOLING INFORMATION	TOOLING ASSISTANCE CENTER 1-800-722-1111
FOR ORDER ENTRY	1-800-526-5142

MAX RECOMMENDED OPERATING TEMPERATURE:  
105°C [221°F]

VOLTAGE RATING:  
-

CIRCULAR MIL AREA:  
-

THIS DRAWING IS A CONTROLLED DOCUMENT FOR AMP INCORPORATED. IT IS SUBJECT TO CHANGE AND THE CONTROLLING ENGINEERING ORGANIZATION SHOULD BE CONTACTED FOR THE LATEST REVISION.

DIMENSIONS, mm [in]	TOLERANCES UNLESS OTHERWISE SPECIFIED.
	0 PLC ±-
	1 PLC ±-
	2 PLC ±0.20 [0.008]
	3 PLC ±-
	4 PLC ±-
	ANGLES ±-

MATERIAL BODY, CU PER ASTM B152  
INSUL, NYLON, COLOR, RED

FINISH BODY, TIN PLATE PER MIL-T-10727

DWN L OLMEDA 14FEB95	<b>AMP</b> AMP Incorporated Harrisburg, PA 17105-3608
CHK M ELLIS 14FEB95	
APVD T MICHIELUTTI 14FEB95	
NAME	
PRODUCT SPEC	SPARE WIRE CAP, RED
APPLICATION SPEC	
WEIGHT -	SIZE A3 CAGE CODE 00779 DRAWING NO C-324485
CUSTOMER DRAWING	SCALE 8:1 SHEET 1 OF 1 REV N