

## 324955 Product Details

[Share](#) [Print](#) [Email](#)




**324955**

TE Internal Number: 324955

 Active

[View 3D PDF](#)

### Ring and Spade Tongue Terminals

 Always EU RoHS/ELV Compliant  
(Statement of Compliance)

#### Product Highlights:

- Terminal Shape = Ring Tongue
- Receptacle Style = Straight
- Body Style = SOLISTRAND
- Barrel Type = Closed Barrel
- Wire/Cable Type = Regular Wire

[View all Features](#)

### Quick Links

- ▶ [Pricing & Availability](#)
- ▶ [Search for Tooling](#)
- ▶ [Product Feature Selector](#)
- ▶ [Contact Us About This Product](#)

[Add to My Part List](#)

[Request Sample](#)

[Find Similar Products](#)

[Buy Product](#)

### Documentation & Additional Information

#### Product Drawings:

- [TERMINAL, RING TONGUE, SOLISTRAND \(PDF, English\)](#)

#### Catalog Pages/Data Sheets:

- None Available

#### Product Specifications:

- None Available

#### Application Specifications:

- None Available

#### Instruction Sheets:

- None Available

#### CAD Files: [\(CAD Format & Compression Information\)](#)

- [2D Drawing \(DXF, Version C\)](#)
- [3D Model \(IGES, Version C\)](#)
- [3D Model \(STEP, Version C\)](#)

[List all Documents](#)

#### Related Products:

- [Tooling](#)

### Product Features (Please use the Product Drawing for all design activity)

#### Product Type Features:

- [Terminal Shape](#) = Ring Tongue
- [Receptacle Style](#) = Straight
- [Barrel Type](#) = Closed Barrel
- [Wire/Cable Type](#) = Regular Wire
- [Insulation](#) = No
- [Insulation Support](#) = Non-Insulation Support
- [Stud Diameter \(mm \[in\]\)](#) = 4.17 [0.164]
- Stud Size = 8 [M4]
- [Shape](#) = RING-048
- [Heavy Duty](#) = No
- [Finish](#) = Tin

#### Termination Features:

- [Wire/Cable Size \(CMA\)](#) = 2,050 – 5,180

#### Dimensions:

- [Barrel I.D. Min. \(mm \[in\]\)](#) = 2.16 [0.085]

#### Body Features:

- [Body Style](#) = SOLISTRAND
- [Wire Range \(mm \[AWG\]\)](#) = 1.25-2.00<sup>2</sup> [16-14]
- [Material](#) = Copper
- [Stock Thickness \(mm \[in\]\)](#) = 0.84 [0.033]

#### Industry Standards:

- [Government/Industry Qualification](#) = No
- [RoHS/ELV Compliance](#) = RoHS compliant, ELV compliant
- [Lead Free Solder Processes](#) = Not relevant for lead free process
- [RoHS/ELV Compliance History](#) = Always was RoHS compliant

#### Packaging Features:

- [Packaging Method](#) = Loose Piece

#### Other:

- Brand = AMP

### Corporate Information

[About TE](#)  
[Investors](#)  
[News Room](#)  
[Supplier Portal](#)  
[Careers](#)  
[Terms & Conditions](#)  
[Privacy Policy](#)

### Quick Links

[Distributor Inventory](#)  
[Product Cross Reference](#)  
[Documents & Drawings](#)  
[Product Compliance Support Center](#)  
[Site Map](#)

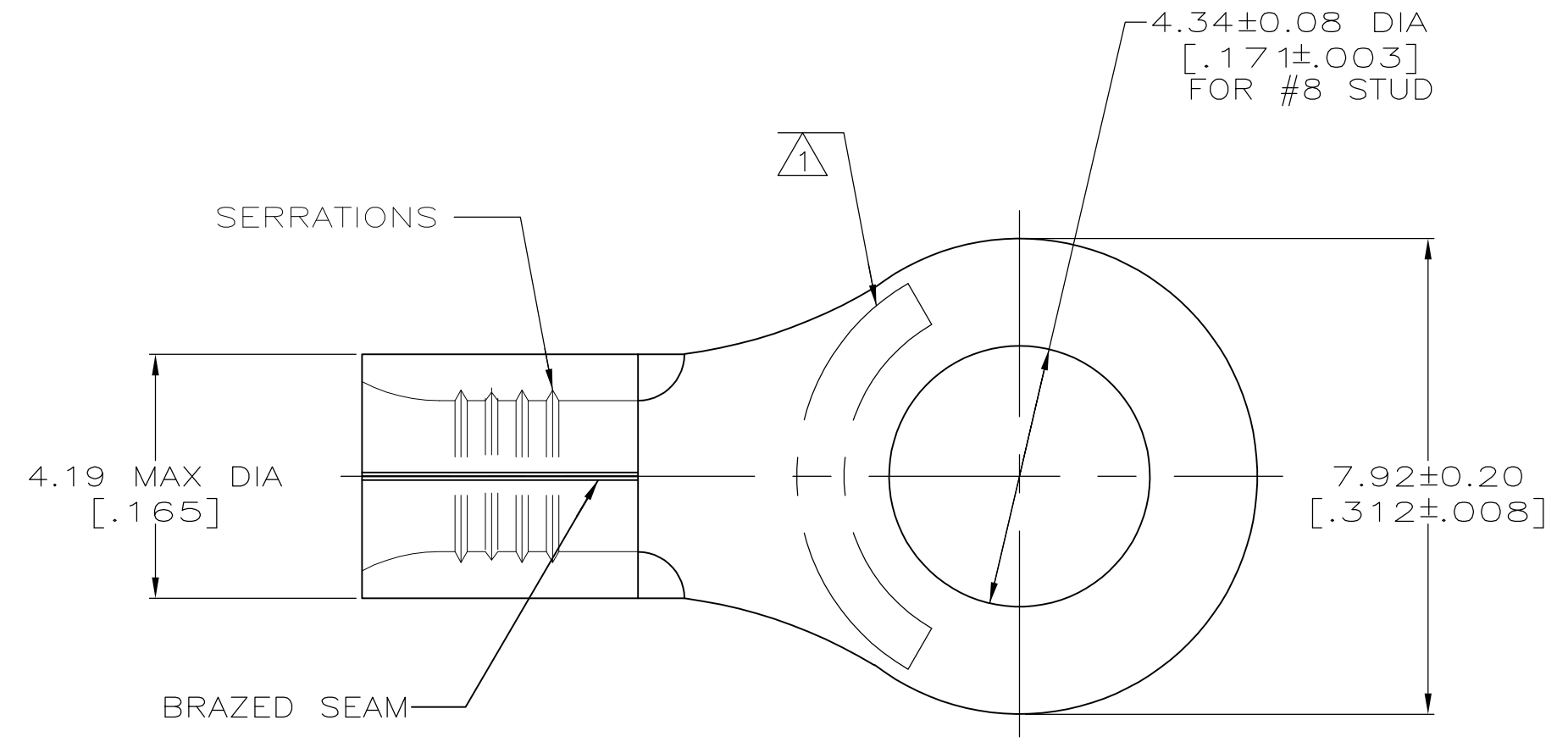
### Customer Support

[Email or Chat With Us](#)  
[Find a Phone Number](#)  
[Knowledge Base](#)  
[Manage Your Account](#)



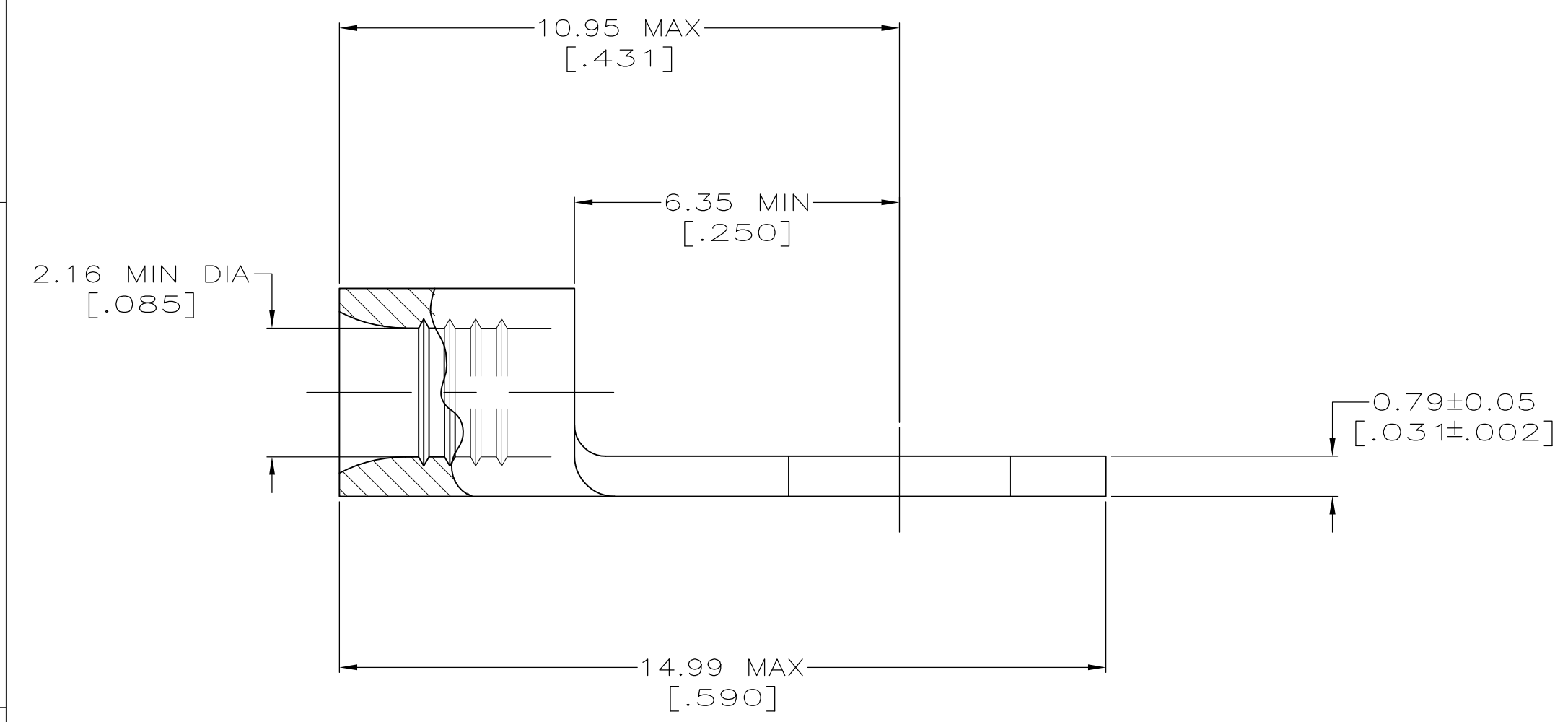
### Keep Me Informed





|                                |                                |
|--------------------------------|--------------------------------|
| <b>AMP</b><br>WIRE RANGE       | E13288<br>Listed               |
| 16-14 AWG<br>SOLID OR STRANDED | 16-14 AWG<br>SOLID OR STRANDED |
| LR7189<br>Certified            | MILITARY P/N<br>AND CLASS      |
| 16-14 AWG<br>SOLID OR STRANDED | NOT APPLICABLE                 |

STAMP AMP 16-14\* APPROX AS SHOWN



|  |  |   |
|--|--|---|
| <b>AMP INCORPORATED<br/>CUSTOMER SERVICE SYSTEMS</b>                             |  | MAX RECOMMENDED OPERATING TEMPERATURE:<br>170° C MAX  |
| FOR ADDITIONAL PRODUCT INFORMATION OR COPIES OF DRAWINGS AND TECHNICAL DOCUMENTS | PRODUCT INFORMATION CENTER<br>1-800-522-6752 | VOLTAGE RATING:<br>NOT APPLICABLE   |
| FOR APPLICATION TOOLING INFORMATION  | TOOLING ASSISTANCE CENTER<br>1-800-722-1111  | WIRE CROSS SECTIONAL AREA RANGE:<br>1.04-2.62mm <sup>2</sup> [2,050-5,180] CIR MILS<br>SOLID OR STRANDED  |
| FOR ORDER ENTRY  | 1-800-526-5142                               | THIS DRAWING IS A CONTROLLED DOCUMENT FOR AMP INCORPORATED. IT IS SUBJECT TO CHANGE AND THE CONTROLLING ENGINEERING ORGANIZATION SHOULD BE CONTACTED FOR THE LATEST REVISION. |

|          |                  |            |
|----------|------------------|------------|
| 50       | LOOSE PIECE, BAG | 8-324955-5 |
| 100      | LOOSE PIECE, BOX | 8-324955-1 |
| 5000     | ON TAPE          | 2-324955-1 |
| ----     | LOOSE PIECE      | 324955     |
| QUANTITY | PACKAGE TYPE     | PART NO    |

|   |  |   |   |
|---|--|---|---|
| THIS DRAWING IS A CONTROLLED DOCUMENT.  |  | DWN<br>TA BRINKMAN<br>3-17-93                                     | TE Connectivity                               |
| DIMENSIONS:<br>MM[INCHES]   |  | CHK<br>DA PATTERSON<br>3-17-93                                    |   |
| TOLERANCES UNLESS OTHERWISE SPECIFIED:  |  | APVD<br>DE MILLER<br>3-17-93                                      | NAME<br>TERMINAL, RING<br>TONGUE, SOLISTRAND™ |
| 0 PLC ± -<br>1 PLC ± -<br>2 PLC ± -<br>3 PLC ± -<br>4 PLC ± -<br>ANGLES ± ± - |  | PRODUCT SPEC<br>-   | SIZE<br>A2                                    |
| MATERIAL<br>COPPER PER<br>ASTM B-152<br>ANNEALED                              |  | FINISH<br>TIN PLATE<br>0.00254[0.00100] MIN<br>THK PER ASTM B-545 | APPLICATION SPEC<br>-                         |
|   |  | WEIGHT<br>-   | DRAWING NO<br>00779                           |
|   |  | CUSTOMER DRAWING  | RESTRICTED TO<br>-                            |
|   |  | SCALE 10:1  | SHEET 1 of 1                                  |
|   |  |   | REV C1  |