



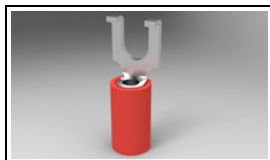
Have a Question?
 Chat with a Product
 Information Specialist

What can we help you find?

[Products](#) |
 [Industries](#) |
 [Resources](#) |
 [About TE](#) |
 [My Account](#) |
 [Innovation](#) |
 [Support Center](#)

32498 Product Details

[Share](#) |
 [Print](#) |
 [Email](#)



32498

TE Internal Number: 32498

Active

Ring and Spade Tongue Terminals

Always EU RoHS/ELV Compliant (Statement of Compliance)

Product Highlights:

- Terminal Shape = Spade Tongue, Flanged
- Receptacle Style = Straight
- Body Style = PIDG
- Barrel Type = Closed Barrel
- Wire/Cable Type = Regular Wire

[View all Features](#)

Quick Links

- ▶ [Pricing & Availability](#)
- ▶ [Search for Tooling](#)
- ▶ [Product Feature Selector](#)
- ▶ [Contact Us About This Product](#)

[Add to My Part List](#) |
 [Request Sample](#) |
 [Find Similar Products](#) |
 [Buy Product](#)

Documentation & Additional Information	
<p>Product Drawings:</p> <ul style="list-style-type: none"> • WIRE TERMINAL, PIDG FLANGED SPADE, WIRE SIZE: 22 16 (PDF, English) <p>Catalog Pages/Data Sheets:</p> <ul style="list-style-type: none"> • None Available <p>Product Specifications:</p> <ul style="list-style-type: none"> • None Available <p>Application Specifications:</p> <ul style="list-style-type: none"> • Pre-Insulated Diamond Grip (PIDG) Terminals, Splices... (PDF, English) <p>Instruction Sheets:</p> <ul style="list-style-type: none"> • None Available <p>CAD Files:</p> <ul style="list-style-type: none"> • None Available 	<p>Related Products:</p> <ul style="list-style-type: none"> • Tooling

[List all Documents](#)

Product Features (Please use the Product Drawing for all design activity)	
<p>Product Type Features:</p> <ul style="list-style-type: none"> • Terminal Shape = Spade Tongue, Flanged • Receptacle Style = Straight • Barrel Type = Closed Barrel • Wire/Cable Type = Regular Wire • Insulation = Yes • Insulation Support = Insulation Support • Stud Diameter (mm [in]) = 4.17 [0.164] • Stud Size = 8 [M4] • Shape = SPADE-024 • Heavy Duty = No • Finish = Tin • Color = Red <p>Electrical Characteristics:</p> <ul style="list-style-type: none"> • Voltage (VAC) = 300 <p>Termination Features:</p> <ul style="list-style-type: none"> • Wire/Cable Size (CMA) = 509 - 3,260 	<p>Dimensions:</p> <ul style="list-style-type: none"> • Insulation Diameter (mm [in]) = 3.56 [.140] Max. <p>Body Features:</p> <ul style="list-style-type: none"> • Body Style = PIDG • Wire Range (mm [AWG]) = 0.30-1.40² [22-16] • Material = Copper • Tongue Material Thickness (mm [in]) = 0.84 [0.033] • Insulation Material = Nylon <p>Industry Standards:</p> <ul style="list-style-type: none"> • Government/Industry Qualification = No • RoHS/ELV Compliance = RoHS compliant, ELV compliant • Lead Free Solder Processes = Not relevant for lead free process • RoHS/ELV Compliance History = Always was RoHS compliant <p>Packaging Features:</p> <ul style="list-style-type: none"> • Packaging Method = Loose Piece <p>Other:</p> <ul style="list-style-type: none"> • Brand = AMP

Corporate Information

- [About TE](#)
- [Investors](#)
- [News Room](#)
- [Supplier Portal](#)

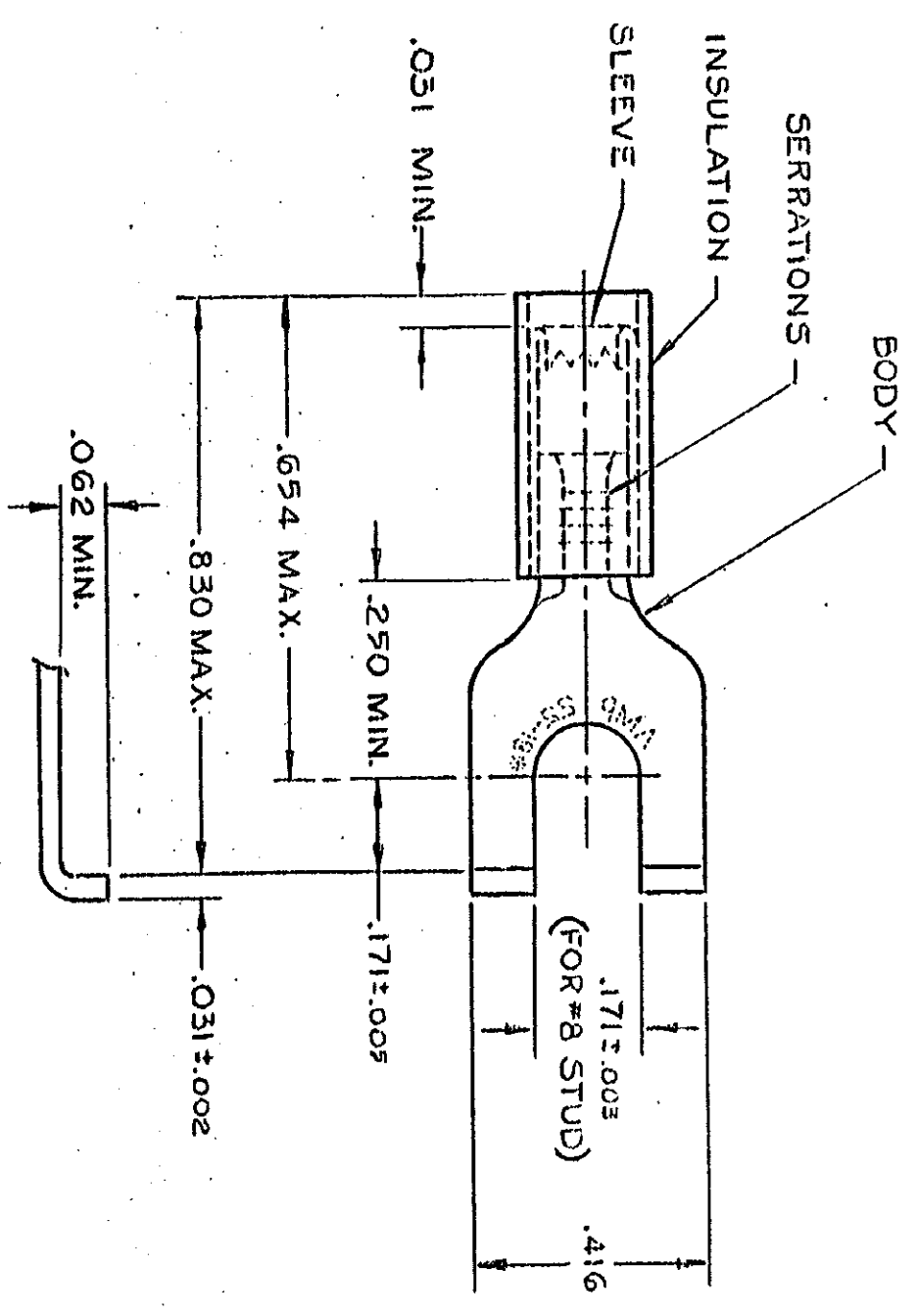
Quick Links

- [Distributor Inventory](#)
- [Product Cross Reference](#)
- [Documents & Drawings](#)
- [Product Compliance Support Center](#)

Customer Support

- [Email or Chat With Us](#)
- [Find a Phone Number](#)
- [Knowledge Base](#)
- [Manage Your Account](#)

THIS DRAWING IS UNPUBLISHED. RELEASED FOR PUBLICATION
 © COPYRIGHT 19 BY AMP INCORPORATED, HARRISBURG, PA. ALL INTERNATIONAL RIGHTS RESERVED. AMP PRODUCTS MAY BE COVERED BY U.S. AND FOREIGN PATENTS AND/OR PATENTS PENDING.



WIRE INSULATION DIA. = .105 - .140
 22-18 MARKING FOR MILITARY
 COMMERCIAL RANGE 22-16
 TIN PLATE (MIL-T-10727)

REVISIONS		DESCRIPTION	DATE	APPROVED
P	F	REDRAWN - REV. PER G-1477, G-1177, P85-0055 & P85-0096	12-18-85	Pim
✓	✓	OBS. 2-3 REV. PER G-3358	4-25-88	ms/ly
✓	✓	REV PER G-4732	2-22-88	Dic
✓	✓	OBSOLETE 2--2 PER G-3780	10/14/88	AGI
✓	✓	REV PER G-5411	2/24/90	DKS/MS
✓	✓	REV/0720-0032-93	10/2/93	me

OBSOLETE
 OBSOLETE

QUANTITY	DESCRIPTION	PART NO
100	LOOSE PC, BOX	8-32498-1
100	ON TAPE, 5M. BOX	2-32498-3
1000	ON TAPE, 15 BOX	2-32498-2
5000	ON TAPE, REEL	2-32498-1
—#—	LOOSE PIECE	32498

UNLESS OTHERWISE SPECIFIED DIMENSIONS ARE IN INCHES. TOLERANCES ON: DECIMALS ± .008 ANGLES ± 90		CONTRACT NO		NAME	
MATERIAL INSULATION: NYLON - RED BODY & SLEEVE: COPPER (QQ-C-576)		DR UTA IRFB 9-19-85		AMP WIRE TERMINAL P.I.D.G. FLANGED SPADE WIRE SIZE: 22-16	
FINISH BODY-SEE NOTE		CHK <i>Mundy</i> 11/5/85		AMP INCORPORATED Harrisburg, Pa.	
OTHER APPD		APPD <i>...</i> 11-15-85		SIZE B	
DSGN APPD		FSCM NO 00779		DRAWING NO 32498	
SCALE NTS		SHEET 1 OF 1		CUSTOMER DRAWING	