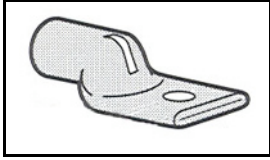


325805 Product Details

[Share](#) [Print](#) [Email](#)




325805

TE Internal Number: 325805

 Active

[View 3D PDF](#)

AMPOWER Terminals

 Always EU RoHS/ELV Compliant
(Statement of Compliance)

Product Highlights:

- Product Classification = Connectors - Terminals and Splices
- Power Generation and Distribution Application
- Wire Size (AWG/CM) = 300,000 CM
- Wire/Cable Size = 275,000 - 325,000 CMA
- Terminal Configuration = Standard

[View all Features](#)

Quick Links

- ▶ [Pricing & Availability](#)
- ▶ [Search for Tooling](#)
- ▶ [Product Feature Selector](#)
- ▶ [Contact Us About This Product](#)

[Add to My Part List](#)

[Request Sample](#)

[Find Similar Products](#)

[Buy Product](#)

Documentation & Additional Information

Product Drawings:

- [TERMINAL, AMPOWER, WIRE SIZE: 300 MCM](#) (PDF, English)

Catalog Pages/Data Sheets:

- None Available

Product Specifications:

- None Available

Application Specifications:

- None Available

Instruction Sheets:

- None Available

CAD Files: (CAD Format & Compression Information)

- [2D Drawing](#) (DXF, Version AK)
- [3D Model](#) (IGES, Version AK)
- [3D Model](#) (STEP, Version AK)

[List all Documents](#)

Related Products:

- [Tooling](#)

Product Features (Please use the Product Drawing for all design activity)

Product Type Features:

- Product Classification = Connectors - Terminals and Splices
- Terminal Configuration = Standard
- Stud Size = 1/2 [M12]
- Finish = Tin

Termination Features:

- [Wire/Cable Size \(CMA\)](#) = 275,000 - 325,000

Dimensions:

- [Stud Diameter \(mm \[in\]\)](#) = 12.70 [0.500]
- [Stud Hole Diameter \(mm \[in\]\)](#) = 13.08 [0.515]
- [Barrel I.D. Min. \(mm \[in\]\)](#) = 19.25 [0.758]
- [Tongue Material Thickness \(mm \[in\]\)](#) = 4.06 [0.160]

Configuration Features:

- [Number of Holes](#) = 1

Industry Standards:

- [RoHS/ELV Compliance](#) = RoHS compliant, ELV compliant
- [Lead Free Solder Processes](#) = Not relevant for lead free process
- [RoHS/ELV Compliance History](#) = Always was RoHS compliant

Operation/Application:

- Application = Power Generation and Distribution

Packaging Features:

- Packaging Quantity = 25

Body Features:

- [Wire Size \(AWG/CM\)](#) = 300,000 CM
- [Barrel Length](#) = Standard
- [Material](#) = Copper (Annealed) per ASTM B-75
- [Inspection Slot](#) = With
- [Body Style](#) = Straight

Other:

- [Brand](#) = AMP
- [Comment](#) = Electrodeposited Tin Plate per MIL-T-10727.

Corporate Information

[About TE](#)
[Investors](#)
[News Room](#)
[Supplier Portal](#)
[Careers](#)
[Terms & Conditions](#)
[Privacy Policy](#)

Quick Links

[Distributor Inventory](#)
[Product Cross Reference](#)
[Documents & Drawings](#)
[Product Compliance Support Center](#)
[Site Map](#)

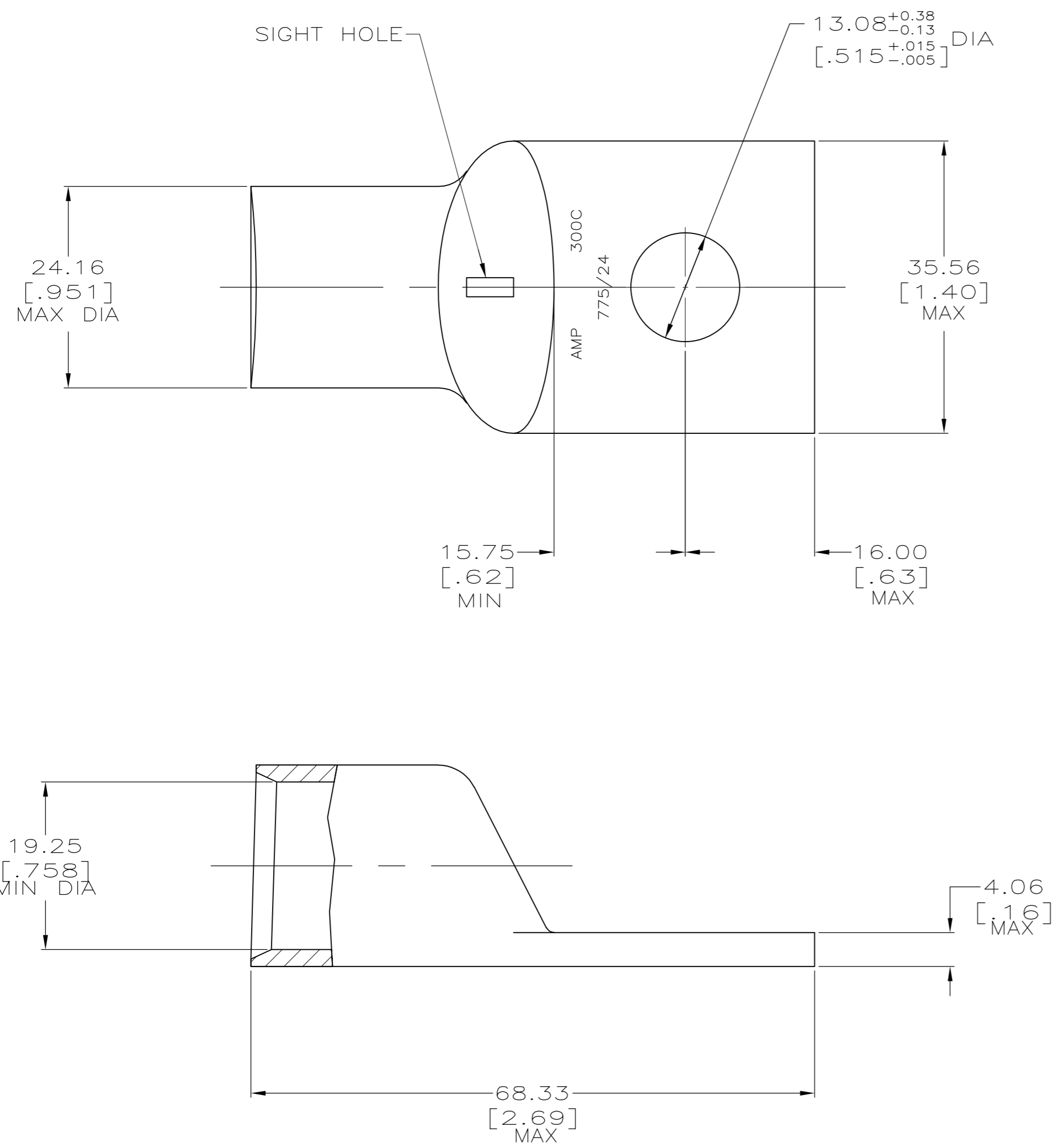
Customer Support

[Email or Chat With Us](#)
[Find a Phone Number](#)
[Knowledge Base](#)
[Manage Your Account](#)

Keep Me Informed

THIS DRAWING IS UNPUBLISHED. RELEASED FOR PUBLICATION
 © COPYRIGHT BY TYCO ELECTRONICS CORPORATION. ALL INTERNATIONAL RIGHTS RESERVED.

LOC	DIST	REVISIONS					
G	86	P	LTR	DESCRIPTION	DATE	DWN	APVD
		Z		REV PER ECR 05-012008	09JUN08	JR	MS



- 1 CIRCULAR MIL AREA RANGE: 275-325 MCM
- 2 TIN PL 0.00381[.000150] MIN THK PER ASTM B-545
- 3 NO SIGHT HOLE
- 4 STAMP FOR MANUFACTURING LOCATION PERMISSIBLE.

3 4 325805-1
 325805
 PART NO.

THIS DRAWING IS A CONTROLLED DOCUMENT.		DWN DK SCHRUM 02/28/90	Tyco Electronics Corporation Harrisburg, PA 17105-3608	
DIMENSIONS: MM [INCHES]		CHK MS FEHER 23JAN95	NAME	
TOLERANCES UNLESS OTHERWISE SPECIFIED:		APVD TL SHUTTER 23JAN95	PRODUCT SPEC	
0 PLC ± -		108-30200		
1 PLC ± -		APPLICATION SPEC		
2 PLC ± 0.51[.020]		SIZE CAGE CODE DRAWING NO RESTRICTED TO		
3 PLC ± -		A2 00779 C=325805		
4 PLC ± -		WEIGHT .154 LB		
ANGLES ± -		SCALE 2:1 SHEET 1 of 1 REV Z		
FINISH		CUSTOMER DRAWING		

325805

A