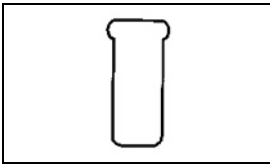


328309 Product Details

[Share](#) [Print](#) [Email](#)



328309

TE Internal Number: 328309
Active

[View 3D PDF](#)

Splices - Closed Barrel

Always EU RoHS/ELV Compliant (Statement of Compliance)

Product Highlights:

- Accessory
- Accessory Type = Wire Caps for Stripped Wire
- Not Sealed
- 1 & 2 Class
- Body Style = PIDG

[View all Features](#)

Quick Links

- ▶ [Pricing & Availability](#)
- ▶ [Search for Tooling](#)
- ▶ [Product Feature Selector](#)
- ▶ [Contact Us About This Product](#)

[Add to My Part List](#) [Request Sample](#) [Find Similar Products](#) [Buy Product](#)

Documentation & Additional Information

Product Drawings:

- [SPARE WIRE CAP, WIRE SIZE, 12-10 AWG \(PDF, English\)](#)

Catalog Pages/Data Sheets:

- None Available

Product Specifications:

- None Available

Application Specifications:

- [Pre-Insulated Diamond Grip \(PIDG\) Terminals, Splices... \(PDF, English\)](#)

Instruction Sheets:

- [Spare Wire Caps 328307, 328308, and 328309 \(PDF, English\)](#)

CAD Files: [\(CAD Format & Compression Information\)](#)

- [2D Drawing \(DXF, Version F\)](#)
- [3D Model \(IGES, Version F\)](#)
- [3D Model \(STEP, Version F\)](#)

[List all Documents](#)

Related Products:

- [Tooling](#)

Product Features (Please use the Product Drawing for all design activity)

Product Type Features:

- Product Type = Accessory
- Accessory Type = Wire Caps for Stripped Wire
- Sealed = No
- Insulation = Yes
- Insulation Support = Insulation Support
- Finish = Tin
- Color = Yellow

Termination Features:

- Wire/Cable Size (CMA) = 5,180 - 13,100

Dimensions:

- Insulation Diameter (mm [in]) = 5.33 [.210] Max.

Body Features:

- Body Style = PIDG
- Wire Range (mm [AWG]) = 3.00-6.00² [12-10]
- Material = Copper

Contact Features:

- Class = 1 & 2

Industry Standards:

- Government/Industry Qualification = Yes
- Government/Industry Part Number = MS25274-4
- RoHS/ELV Compliance = RoHS compliant, ELV compliant
- Lead Free Solder Processes = Not relevant for lead free process
- RoHS/ELV Compliance History = Always was RoHS compliant

Packaging Features:

- Packaging Method = Loose Piece

Other:

- Brand = AMP

Corporate Information

- [About TE](#)
- [Investors](#)
- [News Room](#)
- [Supplier Portal](#)
- [Careers](#)
- [Terms & Conditions](#)

Quick Links

- [Distributor Inventory](#)
- [Product Cross Reference](#)
- [Documents & Drawings](#)
- [Product Compliance Support Center](#)
- [Site Map](#)

Customer Support

- [Email or Chat With Us](#)
- [Find a Phone Number](#)
- [Knowledge Base](#)
- [Manage Your Account](#)

4

3

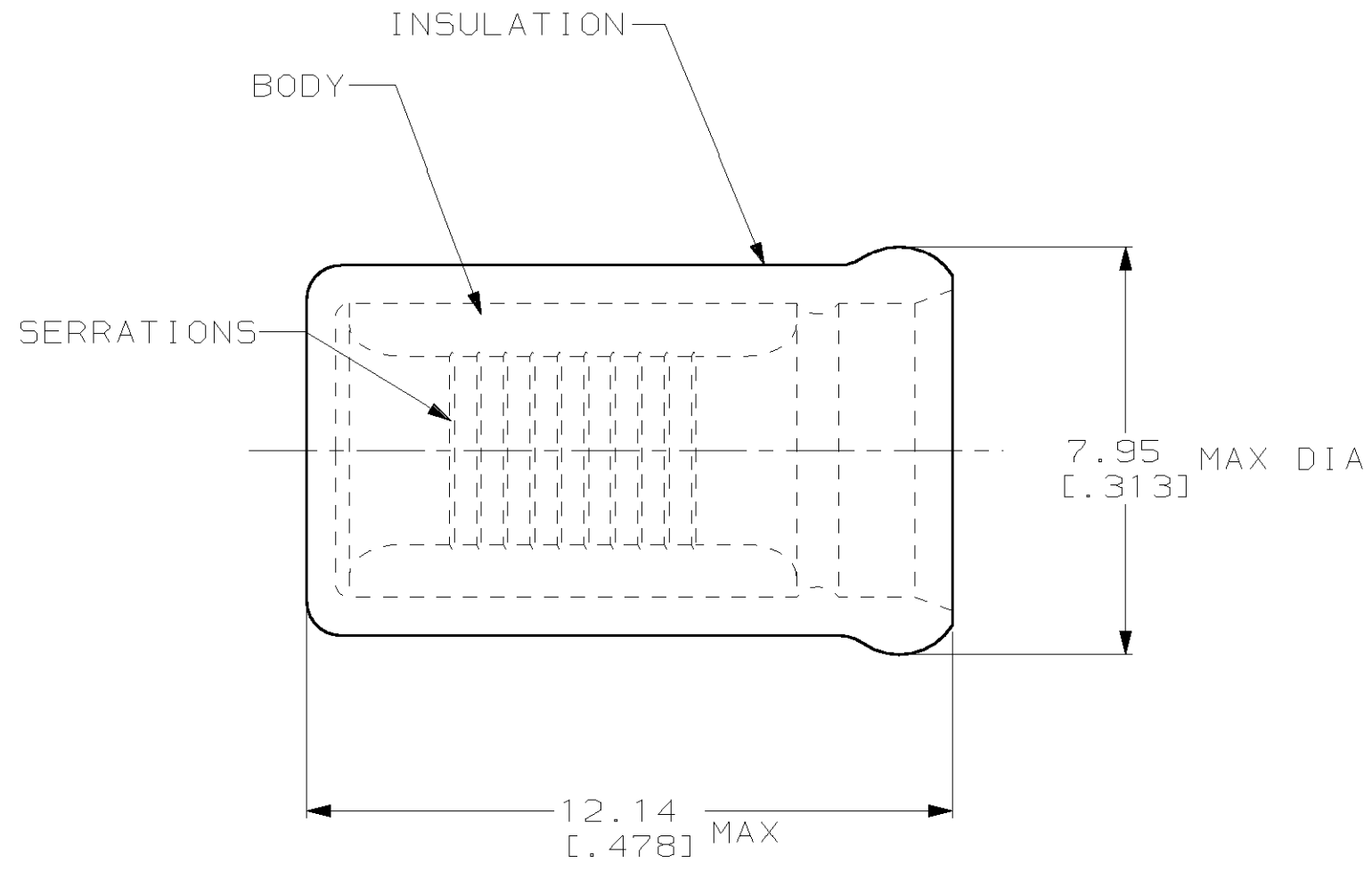
2

1

THIS DRAWING IS UNPUBLISHED. RELEASED FOR PUBLICATION, 19 .

© COPYRIGHT 19 BY AMP INCORPORATED. ALL RIGHTS RESERVED.

LOC	DIST	REVISIONS					
		P	LTR	DESCRIPTION	DATE	DWN	APVD
G	14		F	REV PER 063A-0189-00	15MAY00	JR	TM



1. USE FOR STRIPPED (SINGLE) WIRE END ONLY
2. WIRE INSUL DIA, 5.33 [.210] MAX

-	-	-	-
MS25274/4 CLASS 1 & 2	1000	LOOSE PIECE	328309
MILITARY P/N & CLASS	QTY	PACKAGE TYPE	PART NO

AMP INCORPORATED
CUSTOMER SERVICE SYSTEM

FOR ADDITIONAL PRODUCT INFORMATION OR COPIES OF DRAWINGS AND TECHNICAL DOCUMENTS

FOR APPLICATION TOOLING INFORMATION

FOR ORDER ENTRY

PRODUCT INFORMATION CENTER
1-800-522-6752

TOOLING ASSISTANCE CENTER
1-800-722-1111

1-800-526-5142

MAX RECOMMENDED OPERATING TEMPERATURE:
105°C [221°F]

VOLTAGE RATING:
-

CIRCULAR MIL AREA:
2.62mm²-6.64mm²
[5,180-13,100]

THIS DRAWING IS A CONTROLLED DOCUMENT FOR AMP INCORPORATED. IT IS SUBJECT TO CHANGE AND THE CONTROLLING ENGINEERING ORGANIZATION SHOULD BE CONTACTED FOR THE LATEST REVISION.

DIMENSIONS:
mm [in]

TOLERANCES UNLESS OTHERWISE SPECIFIED:

0 PLC	±-
1 PLC	±-
2 PLC	±0.20 [.008]
3 PLC	±-
4 PLC	±-
ANGLES	±-

MATERIAL
BODY, CU PER ASTM B152
INSUL, NYLON, COLOR, YELLOW,

FINISH
BODY, TIN PLATE
PER MIL-T-10727

DWN L OLMEDA 21MAR96
CHK M ELLIS 21MAR96
APVD K FERREK 21MAR96

PRODUCT SPEC
-

APPLICATION SPEC
-

WEIGHT -

CUSTOMER DRAWING

AMP AMP Incorporated
Harrisburg, PA 17105-3608

NAME
SPARE WIRE CAP,
WIRE SIZE, 12-10 AWG

SIZE A3 CAGE CODE 00779 DRAWING NO C-328309

SCALE 8:1 SHEET 1 OF 1 REV F