

4

3

2

1

THIS DRAWING IS UNPUBLISHED.

RELEASED FOR PUBLICATION

-- --

LOC

DIST

REVISIONS

© COPYRIGHT - By -

ALL RIGHTS RESERVED.

G

H

P

LTR

DESCRIPTION

DATE

DWN

APVD

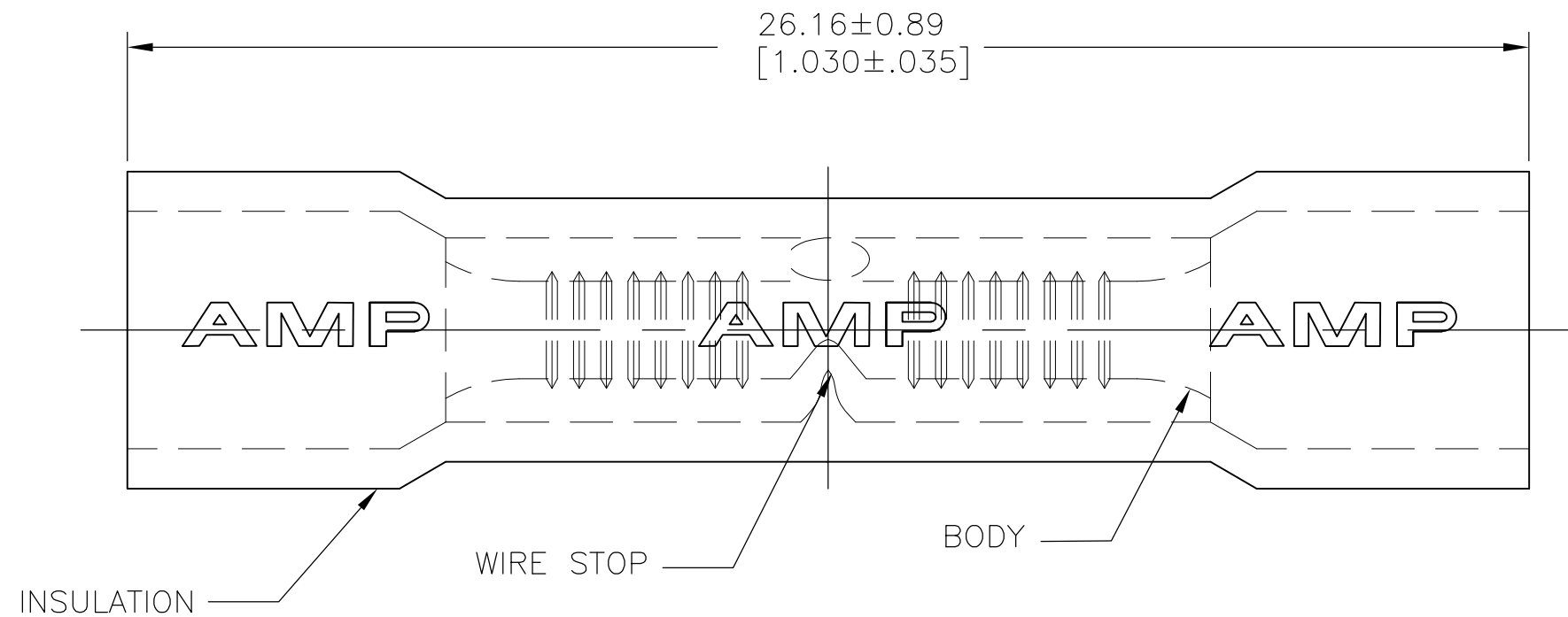
J1

REVISED PER ECO-11-020548

06FEB12

KH

DR



2500	TAPE AND REEL	4.32[.170] MAX	INSULATION: PVC COLOR: RED BODY: COPPER PER ASTM B152, ANNEALED TIN PLATE PER ASTM B545	1-34243-1
100	LOOSE PC/BOX	4.32[.170] MAX		8-34243-1
OBSOLETE	-	4.70[.185] MAX		1-34243-0
1000	LOOSE PIECE	4.32[.170] MAX		34243
QTY	PACKAGE TYPE	INS DIA.	MATERIAL & FINISH	PART NO

THIS DRAWING IS A CONTROLLED DOCUMENT.

DWN 11JAN12

KIRAN HOLAL

CHK 11JAN12

ROHDE DANIEL

APVD 11JAN12

ROHDE DANIEL

PRODUCT SPEC

-

APPLICATION SPEC

-

WEIGHT

-

CUSTOMER DRAWING

TE Connectivity

 NAME  
 WIRE SPLICE PLASTI-GRIP-BUTT  
 WIRE SIZE: 22-16

SIZE CAGE CODE DRAWING NO

A3 00779 C-34243

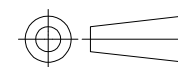
RESTRICTED TO

-

SCALE 8:1

SHEET 1 OF 1

REV J1

DIMENSIONS:  
mm [INCHES]TOLERANCES UNLESS  
OTHERWISE SPECIFIED:
 0 PLC ± -  
 1 PLC ± -  
 2 PLC ± -  
 3 PLC ± 0.203[.008]  
 4 PLC ± -  
 ANGLES ± 5°

MATERIAL

-

FINISH

-