



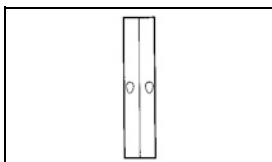
Have a Question?
 Chat with a Product
 Information Specialist

What can we help you find?

[Products](#) |
 [Industries](#) |
 [Resources](#) |
 [About TE](#) |
 [My Account](#) |
 [Innovation](#) |
 [Support Center](#)

34321 Product Details

[Share](#) |
 [Print](#) |
 [Email](#)



34321

TE Internal Number: 34321

Active

View 3D PDF

Splices - Closed Barrel

Always EU RoHS/ELV Compliant (Statement of Compliance)

Product Highlights:

- Splice
- Not Sealed
- Splice Type = Butt
- Butt Splice Type = Standard
- Body Style = SOLISTRAND

[View all Features](#)

Quick Links

- ▶ [Pricing & Availability](#)
- ▶ [Search for Tooling](#)
- ▶ [Product Feature Selector](#)
- ▶ [Contact Us About This Product](#)

[Add to My Part List](#) |
 [Request Sample](#) |
 [Find Similar Products](#) |
 [Buy Product](#)

Documentation & Additional Information

Product Drawings:

- [SPLICE, BUTT, STANDARD, SOLISTRAND](#) (PDF, English)

Catalog Pages/Data Sheets:

- None Available

Product Specifications:

- None Available

Application Specifications:

- None Available

Instruction Sheets:

- None Available

CAD Files: [\(CAD Format & Compression Information\)](#)

- [2D Drawing](#) (DXF, Version C1)
- [3D Model](#) (IGES, Version C1)
- [3D Model](#) (STEP, Version C1)

[List all Documents](#)

Related Products:

- [Tooling](#)

Product Features (Please use the Product Drawing for all design activity)

Product Type Features:

- [Product Type](#) = Splice
- [Sealed](#) = No
- [Splice Type](#) = Butt
- [Insulation](#) = No
- [Insulation Support](#) = Non-Insulation Support
- [Finish](#) = Tin
- [Color](#) = None

Termination Features:

- [Wire/Cable Size \(CMA\)](#) = 13,100 - 20,800

Dimensions:

- [Insulation Diameter \(mm \[in\]\)](#) = 1.32-1.42 [.052-.056]
- [Inside Diameter \(mm \[in\]\)](#) = 4.37 [0.172]

Body Features:

- [Butt Splice Type](#) = Standard
- [Body Style](#) = SOLISTRAND
- [Wire Range \(mm \[AWG\]\)](#) = 8.00² [8]
- [Material](#) = Copper
- [Stock Thickness \(mm \[in\]\)](#) = 1.30 [0.051]
- [Nominal Outside Diameter \(mm \[in\]\)](#) = 7.52 [0.296]

Industry Standards:

- [Government/Industry Qualification](#) = No
- [RoHS/ELV Compliance](#) = RoHS compliant, ELV compliant
- [Lead Free Solder Processes](#) = Not relevant for lead free process
- [RoHS/ELV Compliance History](#) = Always was RoHS compliant

Packaging Features:

- [Packaging Method](#) = Loose Piece

Other:

- [Brand](#) = AMP

Corporate Information

[About TE](#)
[Investors](#)

Quick Links

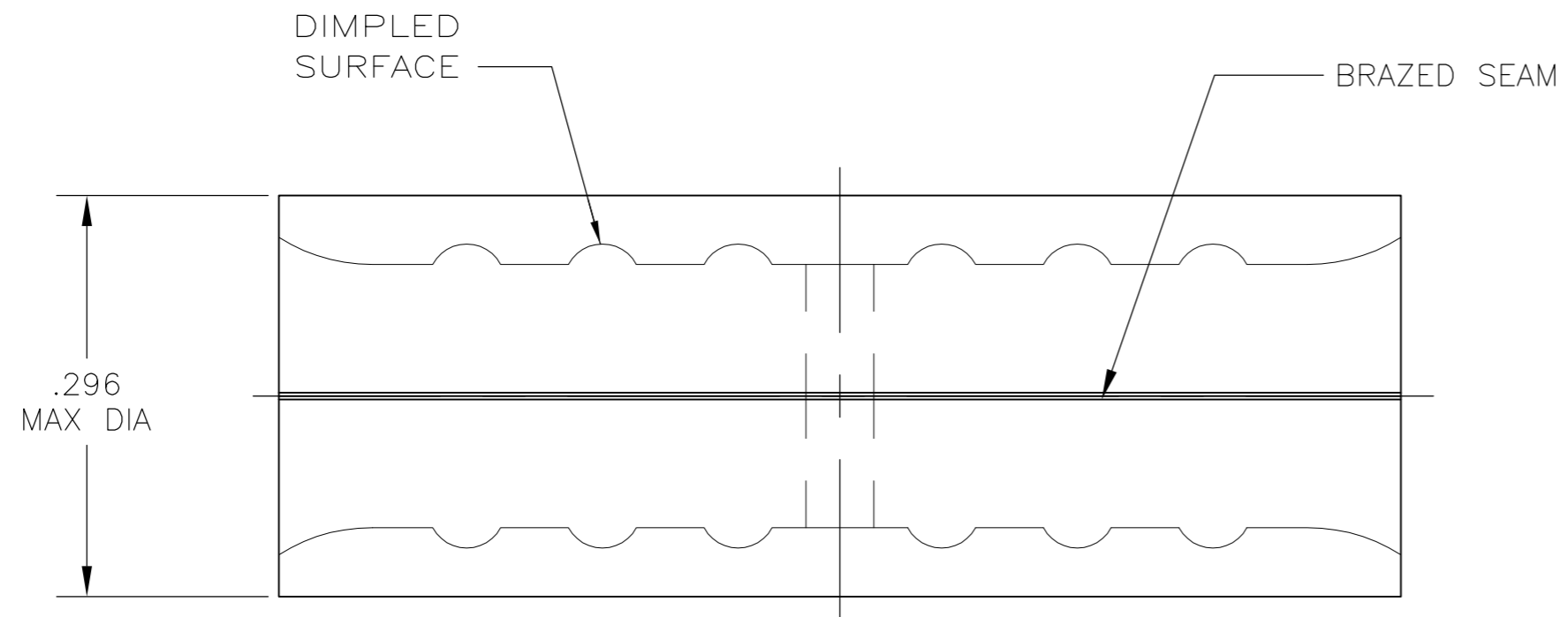
[Distributor Inventory](#)
[Product Cross Reference](#)

Customer Support

[Email or Chat With Us](#)
[Find a Phone Number](#)

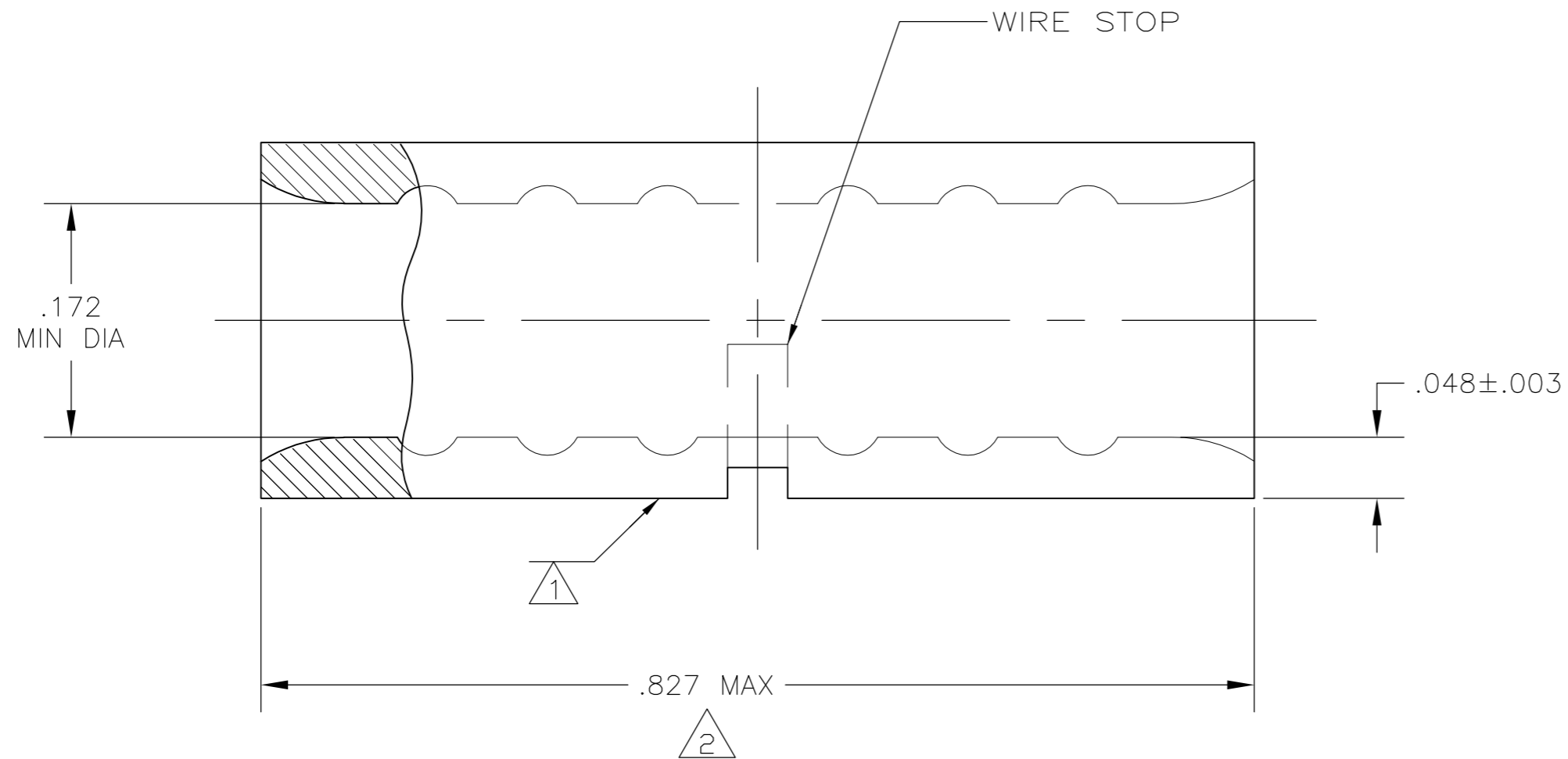
THIS DRAWING IS UNPUBLISHED. RELEASED FOR PUBLICATION
 © COPYRIGHT - By - ALL RIGHTS RESERVED.

LOC	DIST	REVISIONS			DAP		
		P	LTR	DESCRIPTION	DATE	DWN	APVD
G	14		C3	REVISED PER ECO-11-004917	11MAR11	RK	HMR



AMP WIRE RANGE	Listed FILE E13288	LR7189 Certified
8 AWG SOLID OR STRANDED	8 AWG STRANDED	8 AWG SOLID OR STRANDED

- 1 STAMP AMP 8W* APPROX AS SHOWN
- 2 MAXIMUM LENGTH DOES NOT INCLUDE MANUFACTURING TABS
- 3 COPPER PER ASTM B-152, ANNEALED
- 4 .000100 MIN TIN PLATE PER ASTM B-545
- 5 PRELIMINARY - NOT FOR PRODUCTION



25	LOOSE PIECE, BAG	8-34321-5
25	LOOSE PIECE, BOX	8-34321-3
1500	ON TAPE	2-34321-1
----	LOOSE PIECE	34321
QTY	PACKAGING TYPE	PART NO.

**AMP INCORPORATED
CUSTOMER SERVICE SYSTEMS**

MAX RECOMMENDED OPERATING TEMPERATURE:
170°C MAX

FOR ADDITIONAL PRODUCT INFORMATION OR COPIES OF DRAWINGS AND TECHNICAL DOCUMENTS

PRODUCT INFORMATION CENTER
1-800-522-6752

VOLTAGE RATING:
N/A

FOR APPLICATION TOOLING INFORMATION

TOOLING ASSISTANCE CENTER
1-800-722-1111

CIRCULAR MIL AREA:
6.64-10.5mm² [13,100-20,800]
SOLID OR STRANDED

FOR ORDER ENTRY

1-800-526-5142

THIS DRAWING IS A CONTROLLED DOCUMENT FOR AMP INCORPORATED. IT IS SUBJECT TO CHANGE AND THE CONTROLLING ENGINEERING ORGANIZATION SHOULD BE CONTACTED FOR THE LATEST REVISION.

THIS DRAWING IS A CONTROLLED DOCUMENT.		DWN	JR RUTH	19JAN07		TE Connectivity			
DIMENSIONS: INCHES		CHK	M SPICER	19JAN07		NAME			
TOLERANCES UNLESS OTHERWISE SPECIFIED:		APVD	M SPICER	19JAN07		SPLICE, BUTT, STANDARD, SOLISTRAND			
0 PLC ± -		PRODUCT SPEC				SIZE	CAGE CODE	DRAWING NO	RESTRICTED TO
1 PLC ± -		APPLICATION SPEC			A2	00779	C=34321		
2 PLC ± -					WEIGHT	-			
3 PLC ± -					CUSTOMER DRAWING			SCALE	
4 PLC ± -								8:1	
4 PLC ANGLES ± -								SHEET	
MATERIAL		FINISH						1 of 1	
3		4						REV	
								C3	