

4

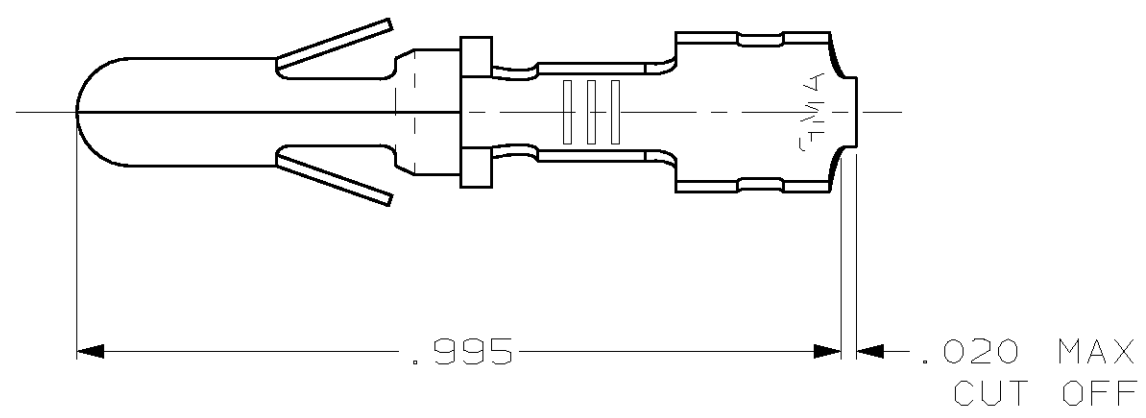
3

2

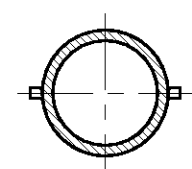
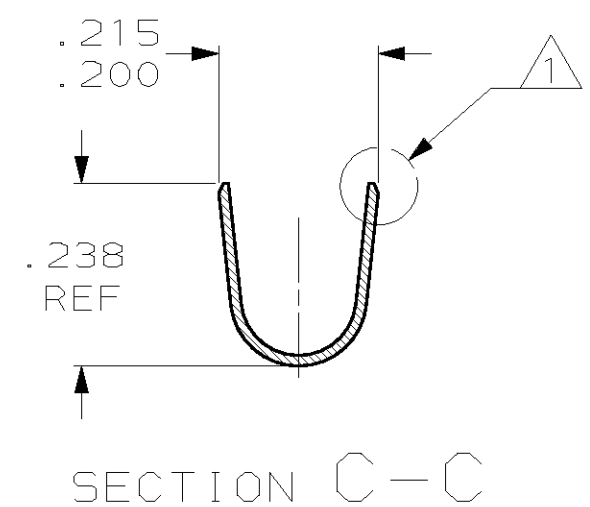
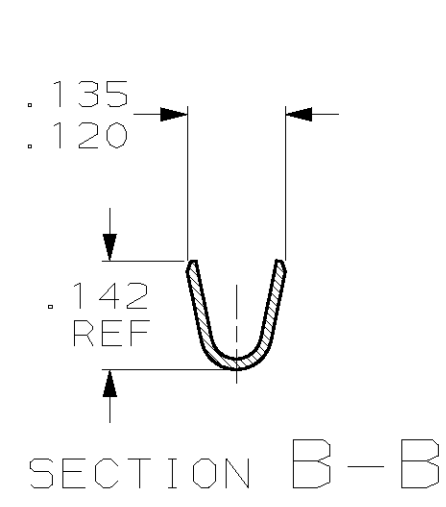
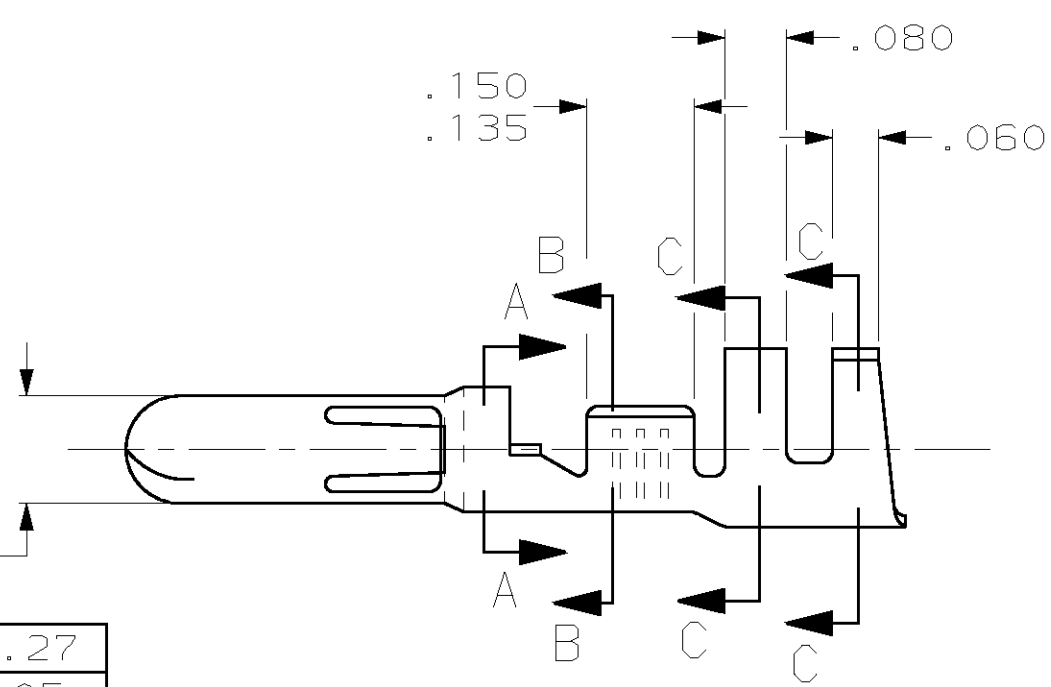
1

THIS DRAWING IS UNPUBLISHED. RELEASED FOR PUBLICATION ,19 .  
 © COPYRIGHT 19 BY AMP INCORPORATED. ALL RIGHTS RESERVED.

LOC	DIST	REVISIONS			
P	LTR	DESCRIPTION	DATE	DWN	APVD
CM	53	D	REV & REDWN PER EC 0G1B-0217-98	29OCT98	TB RS



1 SWAGE, INSULATION BARREL ONLY.



SECTION A-A

350389-1  
PART NUMBER

.995	25.27
.238	6.05
.215	5.46
.200	5.08
.150	3.81
.142	3.61
.140	3.56
.135	3.43
.120	3.05
.080	2.03
.060	1.52
.020	0.51
.014	0.36
.005	0.13
IN	MM
CONVERSION TABLE	

**METRIC**

THIS DRAWING IS A CONTROLLED DOCUMENT.		DWN T. BECK 29OCT1998	<b>AMP</b> AMP Incorporated Harrisburg, PA 17105-3608												
DIMENSIONS: INCHES		CHK R. SWING 29OCT1998													
TOLERANCES UNLESS OTHERWISE SPECIFIED:		APVD C. MARTIN 16NOV1998	NAME PIN, LOOSE PIECE, .140 PIN & SOCKET CONNECTOR												
<table border="0"> <tr><td>0 PLC</td><td>±-</td></tr> <tr><td>1 PLC</td><td>±-</td></tr> <tr><td>2 PLC</td><td>±-</td></tr> <tr><td>3 PLC</td><td>±.005</td></tr> <tr><td>4 PLC</td><td>±-</td></tr> <tr><td>ANGLES</td><td>±-</td></tr> </table>		0 PLC	±-	1 PLC	±-	2 PLC	±-	3 PLC	±.005	4 PLC	±-	ANGLES	±-	PRODUCT SPEC -	SIZE A3
0 PLC	±-														
1 PLC	±-														
2 PLC	±-														
3 PLC	±.005														
4 PLC	±-														
ANGLES	±-														
MATERIAL .014 BRASS		APPLICATION SPEC -	CAGE CODE 00779												
FINISH PRE-TIN		WEIGHT -	DRAWING NO C- 350389												
CUSTOMER DRAWING		RESTRICTED TO -	SCALE 4:1												
			SHEET 1 OF 1												
			REV D												