

Distributed by:

JAMECO[®]
ELECTRONICS

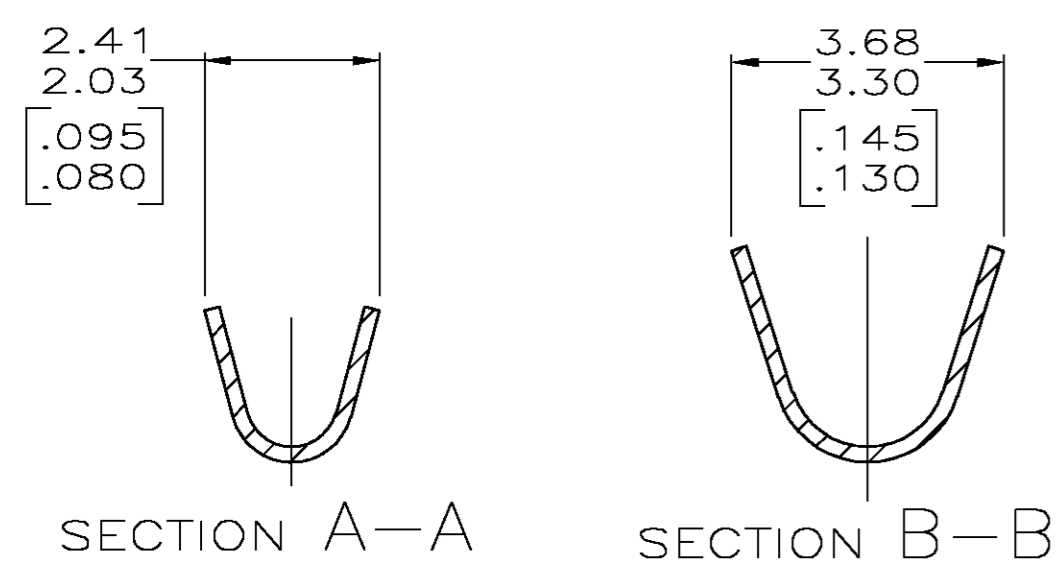
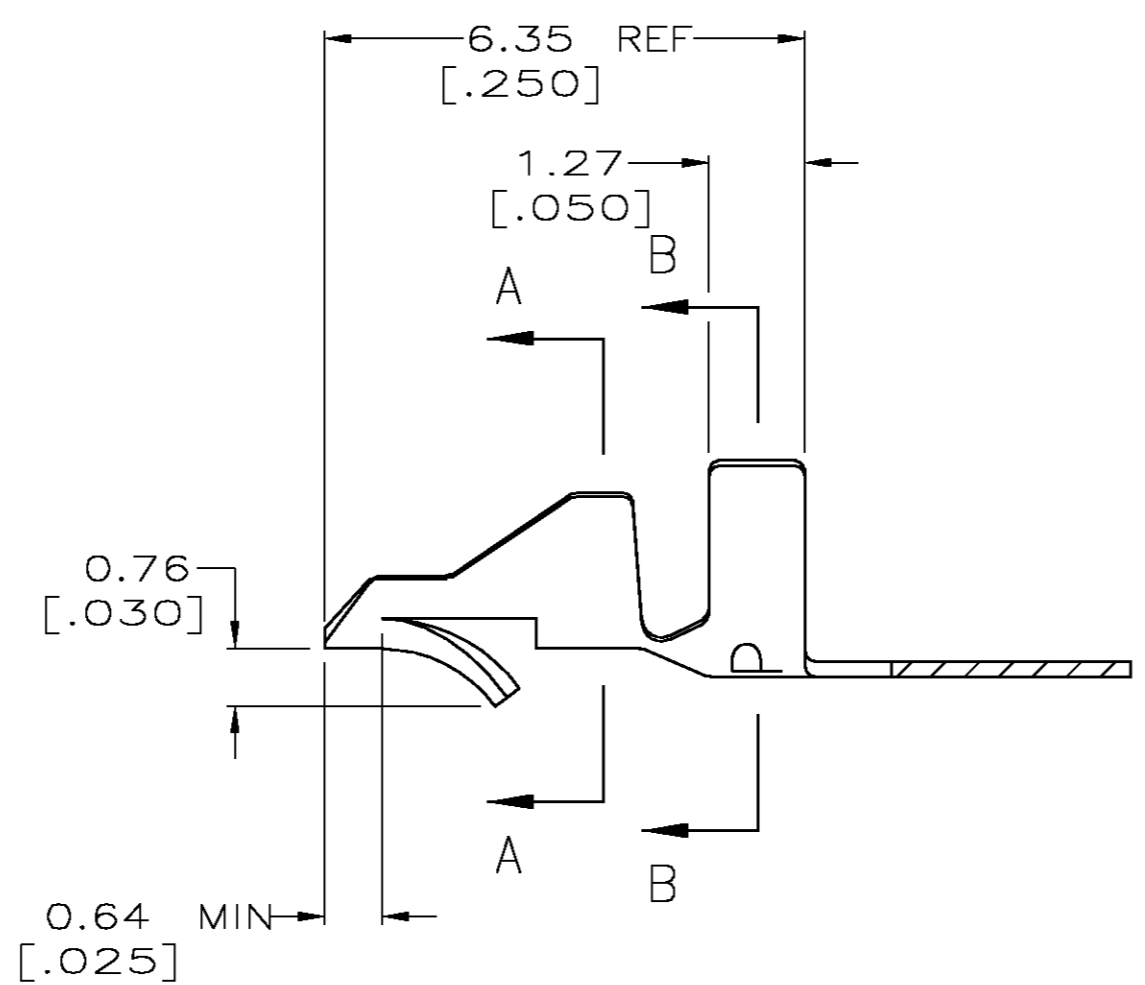
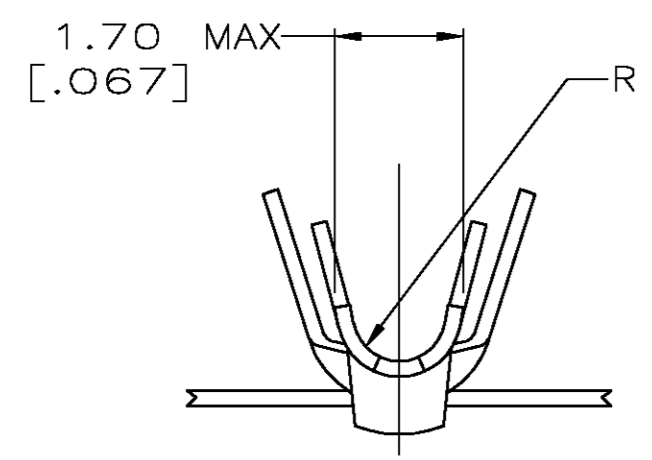
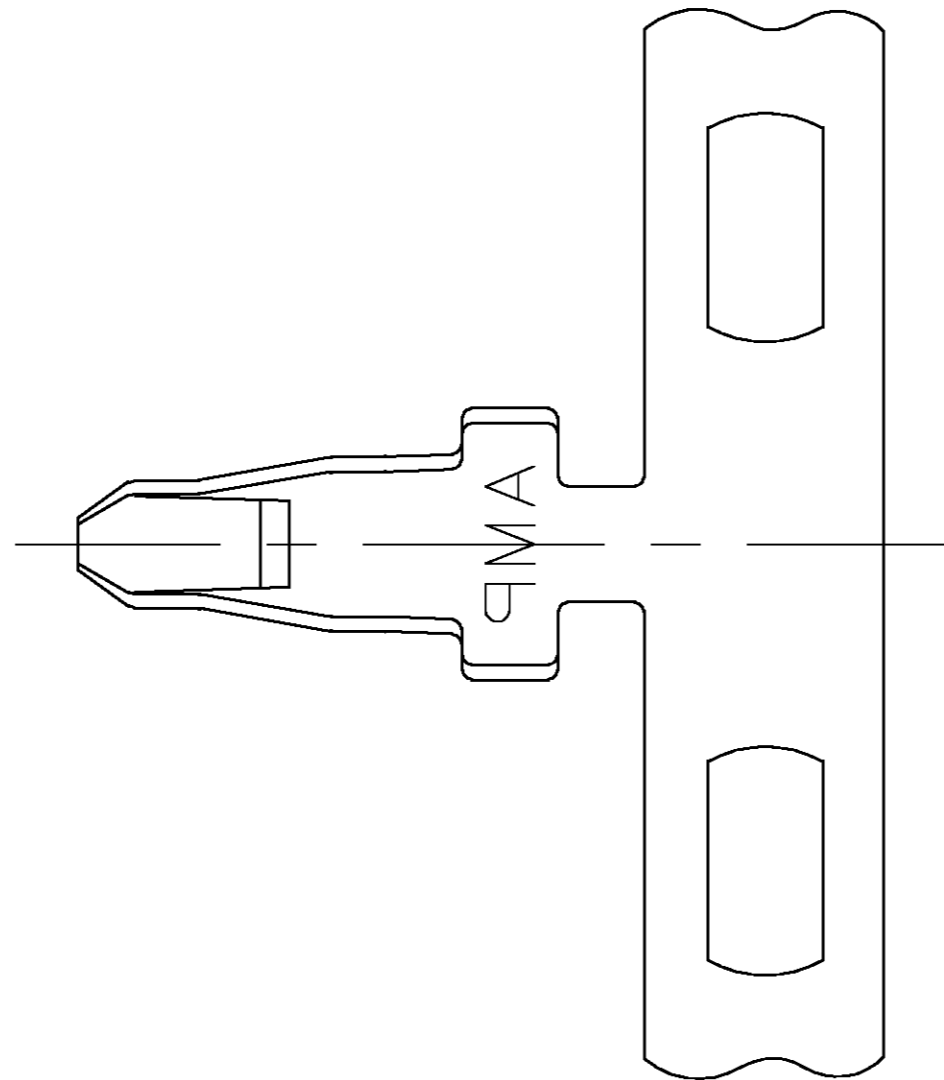
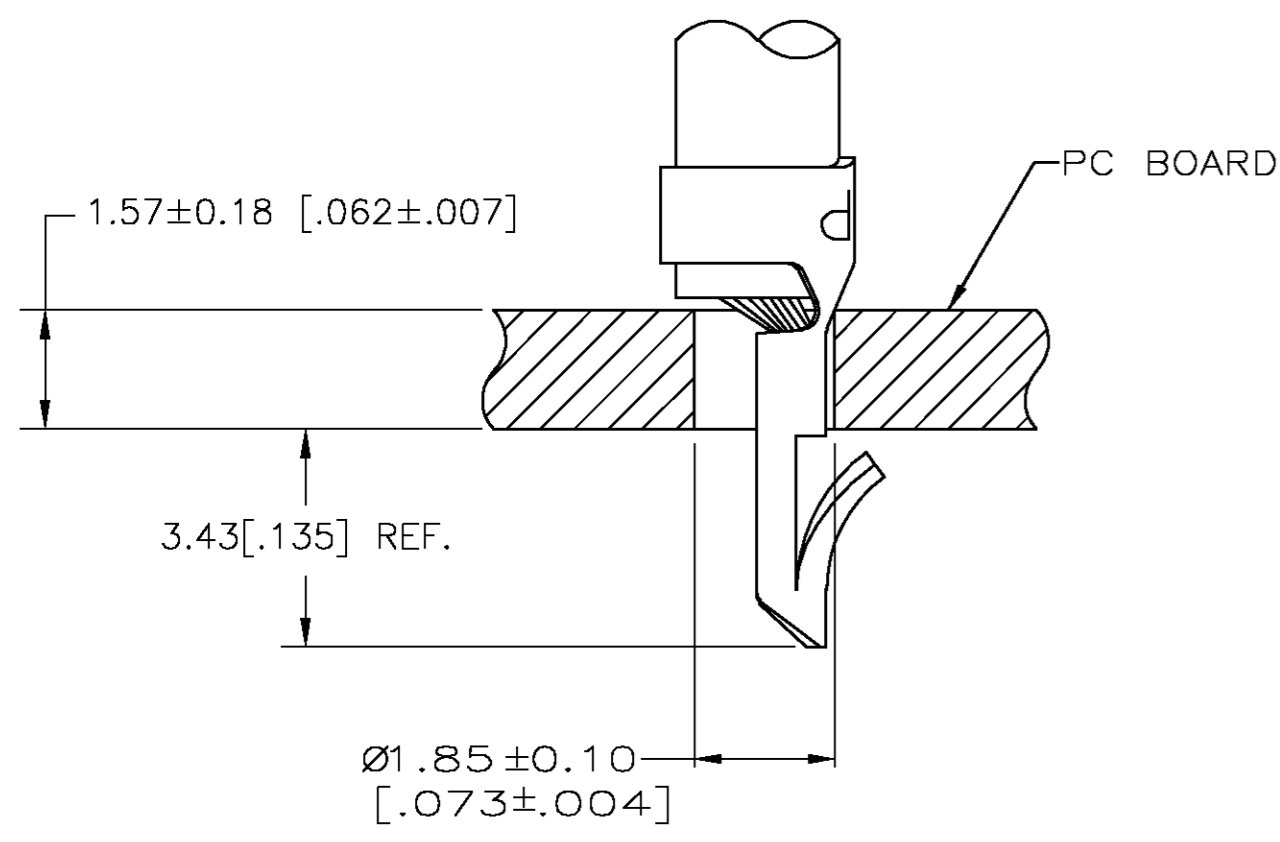
www.Jameco.com ♦ 1-800-831-4242

The content and copyrights of the attached
material are the property of its owner.

Jameco Part Number 845863

THIS DRAWING IS UNPUBLISHED. RELEASED FOR PUBLICATION
 © COPYRIGHT BY TYCO ELECTRONICS CORPORATION. ALL RIGHTS RESERVED.

LOC	DIST	REVISIONS			
P	LTR	DESCRIPTION	DATE	DWN	APVD
CM	00	AA2	REV PER ECN 0G3B-0917-03	16-DEC-03	KW JE



METRIC

- ① PARTS COMPLY WITH AMP SOLDERABILITY SPEC 109-11-3.
- ② PARTS COMPLY WITH AMP SOLDERABILITY SPEC 109-11-5.
- ③ PARTS COMPLY WITH AMP SOLDERABILITY SPEC 109-11-1.
- ④ FOR FOREIGN PRODUCTION ONLY.
- ⑤ CARRIER STRIP TO HAVE 1.52 [.060] DIA PILOT HOLE.
- ⑥ 0.00508 [.000200] MIN BRIGHT TIN-LEAD.
- ⑦ 0.00318 [.000150] MIN MATTE TIN-LEAD OVER 0.00305 [.000120] MIN MATTE COPPER.
- ⑧ 0.00305 [.000120] MIN TIN OVER 0.00102 [.000040] MIN NICKEL.
- 9. WIRE RANGE: 0.3 - 0.9 mm² (22 - 18 AWG).
- 10. INSULATION RANGE: 1.52 - 2.79 [.060 - .110] DIA.
- 11. DIMENSIONS IN BRACKETS ARE IN INCHES.
- ⑫ 0.00508 [.000200] MIN BRIGHT TIN.

NOTES	FINISH	MATERIAL	PART NO.
①	②	0.20 [.008] PH BRZ	3-350566-1
③④⑤	⑧	0.20 [.008] BRASS	350566-7
③④	⑧	0.20 [.008] BRASS	350566-5
②④	⑧	0.20 [.008] BRASS	350566-3
①	⑥	0.20 [.008] PH BRZ	350566-1

THIS DRAWING IS A CONTROLLED DOCUMENT.

DIMENSIONS: INCHES	TOLERANCES UNLESS OTHERWISE SPECIFIED:	DWN S. CARPENTER 20AUG2003	Tyco Electronics Corporation Harrisburg, PA 17105
	0 PLC ±	CHK J. ELLIS 20AUG2003	
	1 PLC ±	APVD J. ELLIS 20AUG2003	
	2 PLC ±	PRODUCT SPEC	
MATERIAL SEE TABLE	FINISH SEE TABLE	APPLICATION SPEC 114-1016	NAME MINI AMP-IN™
		WEIGHT	SIZE A2 CAGE CODE 00779 DRAWING NO. C=350566 RESTRICTED TO -
		CUSTOMER DRAWING	SCALE 10:1 SHEET 1 OF 1 REV AA2

350566

A/C BUSINESS GROUP 3323 177-34 RALPH VESTAL