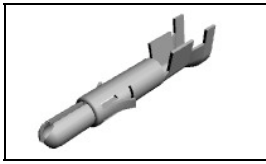


350687-7 Product Details

[Share](#) [Print](#) [Email](#)



350687-7

TE Internal Number: 350687-7

Active

[View 3D PDF](#)

.250" Centerline, 600 V, 19 - 36 A max

Always EU RoHS/ELV Compliant (Statement of Compliance)

Product Highlights:

- Universal MATE-N-LOK Product Line
- Wire-to-Wire
- Applies To Wire/Cable
- Contact
- Contact Type = Pin

[View all Features](#)

Quick Links

- ▶ Pricing & Availability
- ▶ Search for Tooling
- ▶ View Housings (206)
- ▶ Product Feature Selector
- ▶ Contact Us About This Product

[Add to My Part List](#) [Request Sample](#) [Find Similar Products](#) [Buy Product](#)

Documentation & Additional Information

Product Drawings:

- [PIN, UNIVERSAL MATE-N-LOK](#) (PDF, English)

Catalog Pages/Data Sheets:

- [SOFT_SHELL_PIN_SOCKET_CONNECTORS_STANDARD_DENSITY](#) (PDF, English)

Product Specifications:

- None Available

Application Specifications:

- [Universal MATE-N-LOK Connectors](#) (PDF, English)

Instruction Sheets:

- None Available

CAD Files: ([CAD Format & Compression Information](#))

- [2D Drawing](#) (DXF, Version Y)
- [3D Model](#) (IGES, Version Y)
- [3D Model](#) (STEP, Version Y)

[List all Documents](#)

Additional Information:

- [Product Line Information](#)

Related Products:

- [Tooling](#)
- [Housings \(206\)](#)

Product Features (Please use the Product Drawing for all design activity)

Product Type Features:

- Product Line = Universal MATE-N-LOK
- Product Type = Contact
- Sealed = No
- Wire/Cable Type = Discrete Wire
- UL File Number = E28476
- CSA File Number = LR 16455

Mechanical Attachment:

- Contact Retention = With
- Contact Retention Type = Locking Lance

Electrical Characteristics:

- Contact - Rated Current (A) = 19
- Operating Voltage Reference = AC
- Operating Voltage (VAC) = 600

Termination Features:

- Wire/Cable Size (mm²) = 0.5 - 2
- Wire/Cable Size (AWG) = 14 - 20
- Termination Method to Wire/Cable = Crimp

Body Features:

- Wire Type = Stranded
- Underplate Material Thickness (µm [µin]) = 1.27 [50.000]

Contact Features:

- Contact Type = Pin
- Contact Style = Split
- Contact Base Material = Brass
- Contact Plating, Mating Area, Material = Gold
- Multiple Contact Types = Without
- Contact Plating, Mating Area, Thickness (µm [µin]) = 0.76 [29.92]
- Underplate Material = Nickel

Configuration Features:

- Strain Relief = Without

Industry Standards:

- Agency/Standard = CSA, UL
- **RoHS/ELV Compliance** = RoHS compliant, ELV compliant
- **Lead Free Solder Processes** = Not relevant for lead free process
- RoHS/ELV Compliance History = Always was RoHS compliant
- VDE Tested = Yes
- UL Rating = Recognized
- CSA Rating = Certified

Environmental:

- Operating Temperature (°C [°F]) = -55 - +125 [-67 - +257]

Conditions for Usage:

- Applies To = Wire/Cable
- Glow Wire Rating = Standard Part - Not Glow Wire
- Accepts Wire Insulation Diameter, Range (mm [in]) = 1.52 - 3.30 [0.060 - 0.130]
- For Use With = Universal MATE-N-LOK Plug or Socket Housing

Operation/Application:

- Application Use = Wire-to-Wire

Packaging Features:

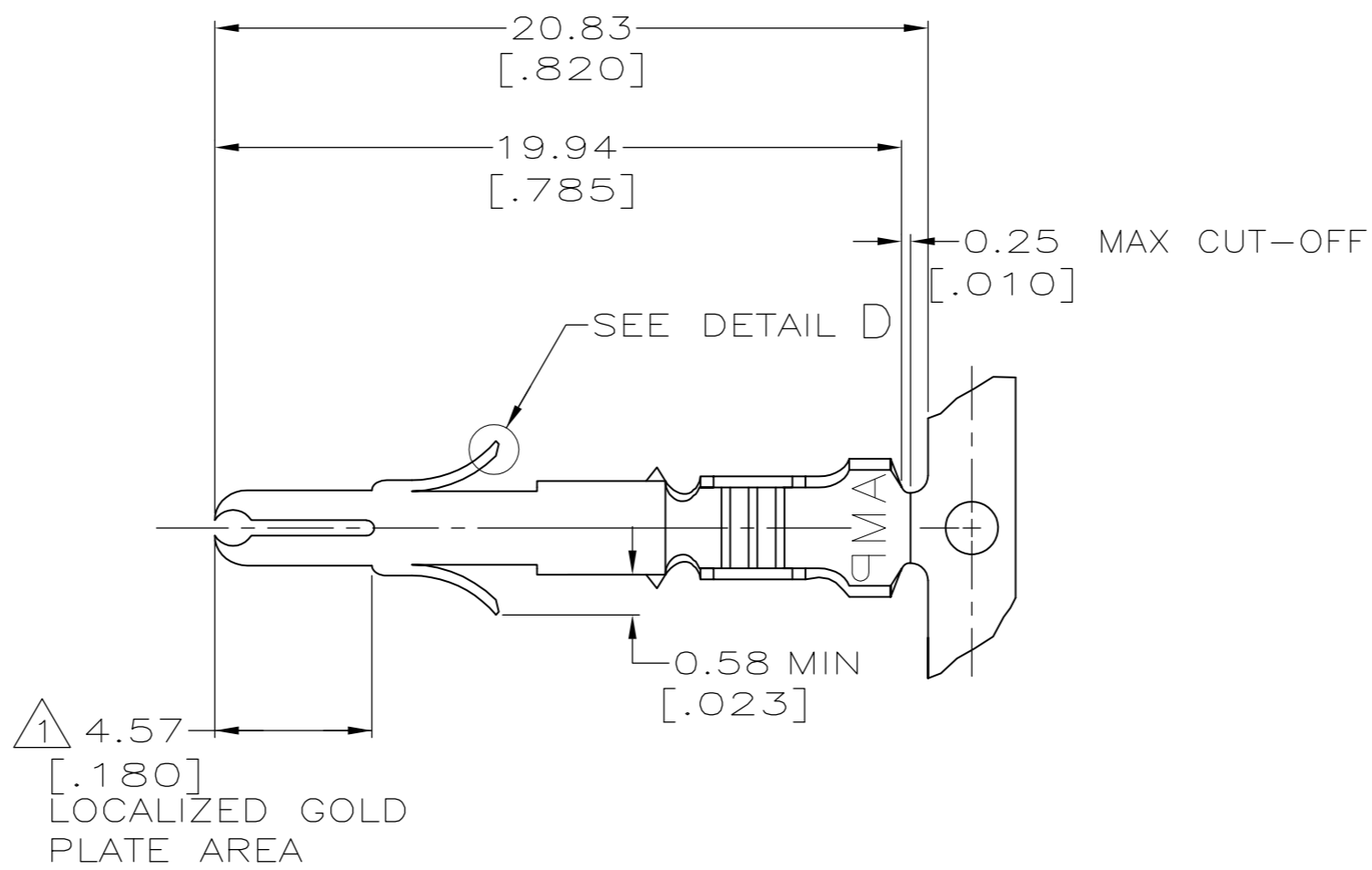
- Packaging Method = Reel
- Packaging Quantity = 5,000

Other:

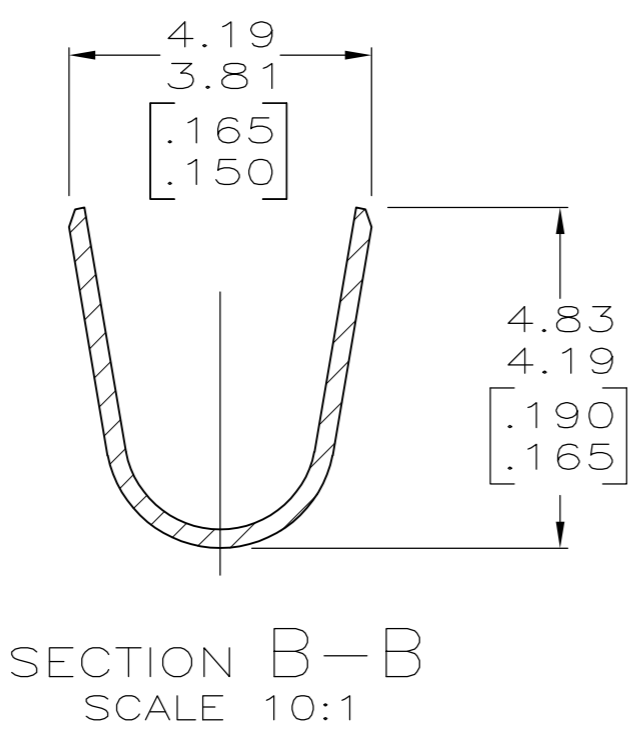
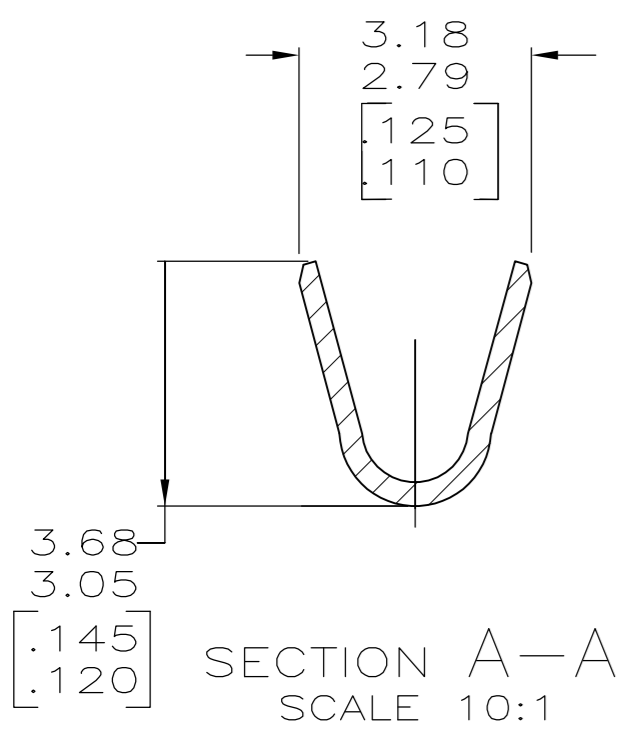
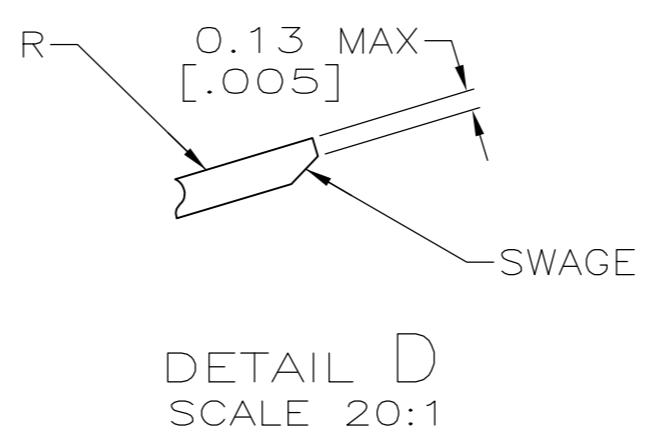
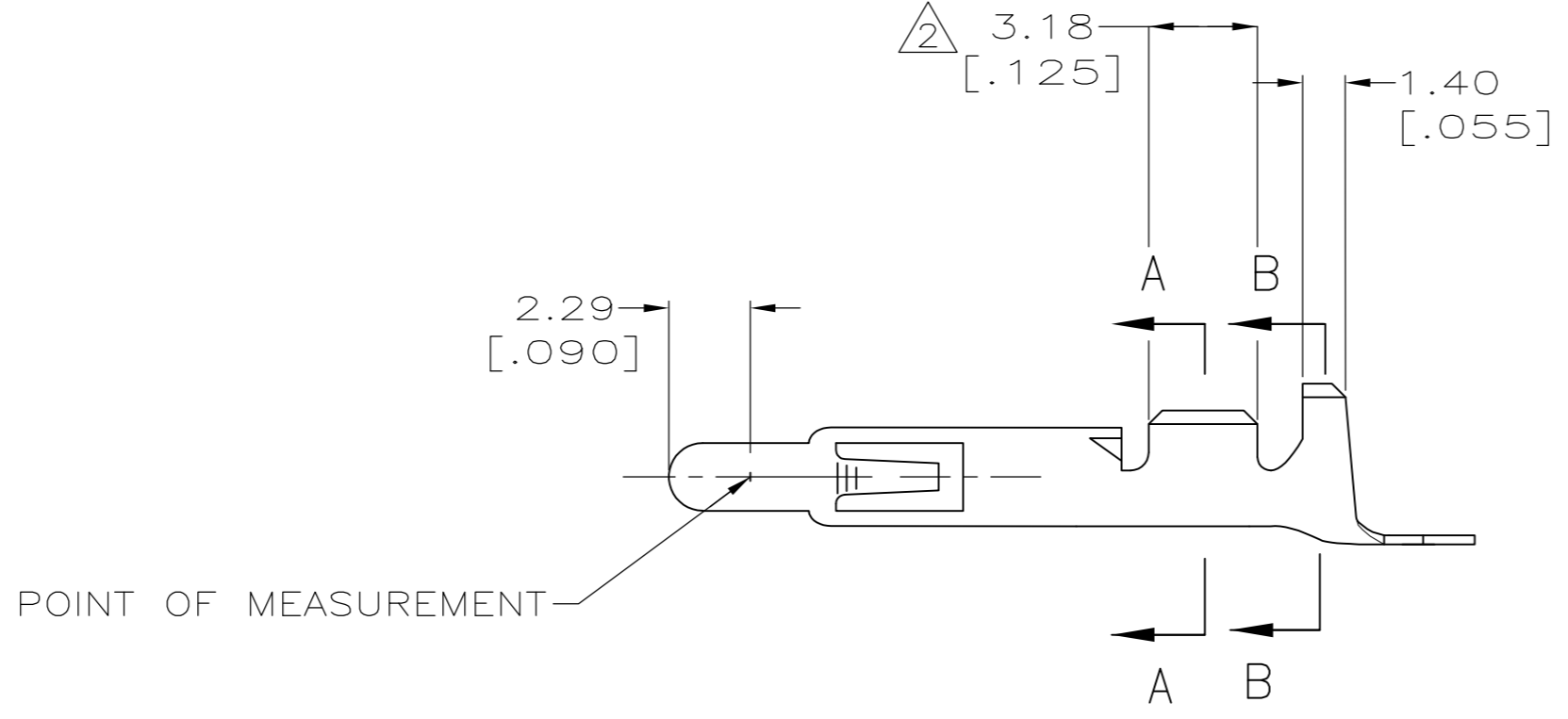
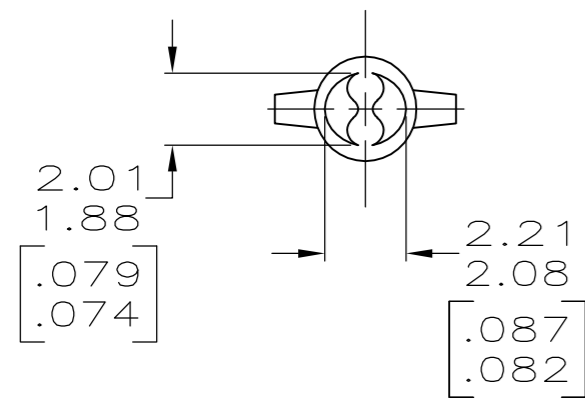
- Brand = AMP

THIS DRAWING IS UNPUBLISHED. RELEASED FOR PUBLICATION
 © COPYRIGHT - By - ALL RIGHTS RESERVED.

LOC	DIST	REVISIONS					
CM	53	P	LTR	DESCRIPTION	DATE	DWN	APVD
		Z		REVISED PER ECR-12-013323	09AUG12	KH	TM



- 1 PLATED WITH 0.00076 [.000030] GOLD, OVER 0.00127 [.000050] NICKEL UNDERPLATE.
- 2 PLATED INTERNALLY WITH 0.00076 [.000030] GOLD.
- 3 DIMENSIONS IN BRACKETS ARE IN INCHES.
- 4 PRELIMINARY, NOT FOR PRODUCTION.
- 5 INSULATION RANGE: 1.52-3.30 [.060-.130] DIA.



4				
	-	0.31 [.012] BE CU	PRE-TIN	350687-9
	350705-7	0.31 [.012] BRASS	GOLD 1	350687-7
	-	0.31 [.012] PH BRZ	GOLD 1	350687-5
	350705-2	0.31 [.012] BRASS	GOLD 1 2	350687-2
	350705-1	0.31 [.012] BRASS	PRE-TIN	350687-1
	LOOSE PIECE (REF)	MATERIAL	FINISH	PART NUMBER

THIS DRAWING IS A CONTROLLED DOCUMENT.

DIMENSIONS: mm [INCHES]	TOLERANCES UNLESS OTHERWISE SPECIFIED:	DWN K. WHITAKER 12-MAY-2000	TE Connectivity
0 PLC ± -	1 PLC ± -	CHK K. COBLE 12-MAY-2000	
2 PLC ± 0.13 [.005]	3 PLC ± -	APVD K. COBLE 12-MAY-2000	NAME: PIN, UNIVERSAL MATE-N-LOK™
4 PLC ± -	ANGLES ± 0° 30'	PRODUCT SPEC	
WEIGHT	MATERIAL	APPLICATION SPEC	SIZE: A2
CUSTOMER DRAWING	FINISH	WEIGHT	CAGE CODE: 00779
			DRAWING NO: C=350687
			RESTRICTED TO: -
			SCALE: 5:1
			SHEET: 1 of 1
			REV: Z