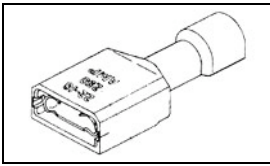


3-520116-2 Product Details

[Share](#) [Print](#) [Email](#)



3-520116-2

TE Internal Number: 3-520116-2
✔ Active

[View 3D PDF](#)

Ultra-Fast Receptacles & Tabs

✔ Always EU RoHS/ELV Compliant (Statement of Compliance)

Product Highlights:

- Terminal Type = Receptacle
- Proprietary Name = Ultra-Fast
- Receptacle Style = Straight
- Mating Area Interface Dimensions = 6.35 x 0.81 mm
- Phosphor Bronze Material

[View all Features](#)

Quick Links

- ▶ [Pricing & Availability](#)
- ▶ [Search for Tooling](#)
- ▶ [Product Feature Selector](#)
- ▶ [Contact Us About This Product](#)

[Add to My Part List](#) [Request Sample](#) [Find Similar Products](#) [Buy Product](#)

Documentation & Additional Information

Product Drawings:

- [RECEPTACLE ASSY,ULTRA-FAST, .250 SERIES,16-14 AWG \(PDF, English\)](#)

Catalog Pages/Data Sheets:

- [Ultra-Fast and Ultra Fast Plus \(PDF, English\)](#)

Product Specifications:

- [Ultra-Fast Fully Insulated FASTON Receptacle Terminals \(PDF, English\)](#)

Application Specifications:

- None Available

Instruction Sheets:

- None Available

CAD Files: [\(CAD Format & Compression Information\)](#)

- [2D Drawing \(DXF, Version J\)](#)
- [3D Model \(IGES, Version J\)](#)
- [3D Model \(STEP, Version J\)](#)

[List all Documents](#)

Additional Information:

- [Product Line Information](#)

Related Products:

- [Tooling](#)

Product Features (Please use the Product Drawing for all design activity)

Product Type Features:

- [Receptacle Style](#) = Straight
- [Insulation Support](#) = Non-Insulation Support
- [Finish](#) = Tin

Dimensions:

- [Mating Area Interface Dimensions \(mm \[in\]\)](#) = 6.35 x 0.81 [.250 x .032]
- [Insulation Diameter \(mm \[in\]\)](#) = 4.06 [.160] Max.

Body Features:

- [Material](#) = Phosphor Bronze
- [Wire Range \(mm \[AWG\]\)](#) = 1.25-2.00² [16-14]
- [Fully Insulated](#) = Yes

Contact Features:

- [Terminal Type](#) = Receptacle

Industry Standards:

- [RoHS/ELV Compliance](#) = RoHS compliant, ELV compliant
- [Lead Free Solder Processes](#) = Not relevant for lead free process
- [RoHS/ELV Compliance History](#) = Always was RoHS compliant
- [UL Flammability Rating](#) = UL 94V-2

Packaging Features:

- [Packaging Method](#) = Strip

Other:

- [Proprietary Name](#) = Ultra-Fast
- [Brand](#) = AMP

Corporate Information

- [About TE](#)
- [Investors](#)
- [News Room](#)
- [Supplier Portal](#)
- [Careers](#)
- [Terms & Conditions](#)
- [Privacy Policy](#)

Quick Links

- [Distributor Inventory](#)
- [Product Cross Reference](#)
- [Documents & Drawings](#)
- [Product Compliance Support Center](#)
- [Site Map](#)

Customer Support

- [Email or Chat With Us](#)
- [Find a Phone Number](#)
- [Knowledge Base](#)
- [Manage Your Account](#)

Keep Me Informed

4

3

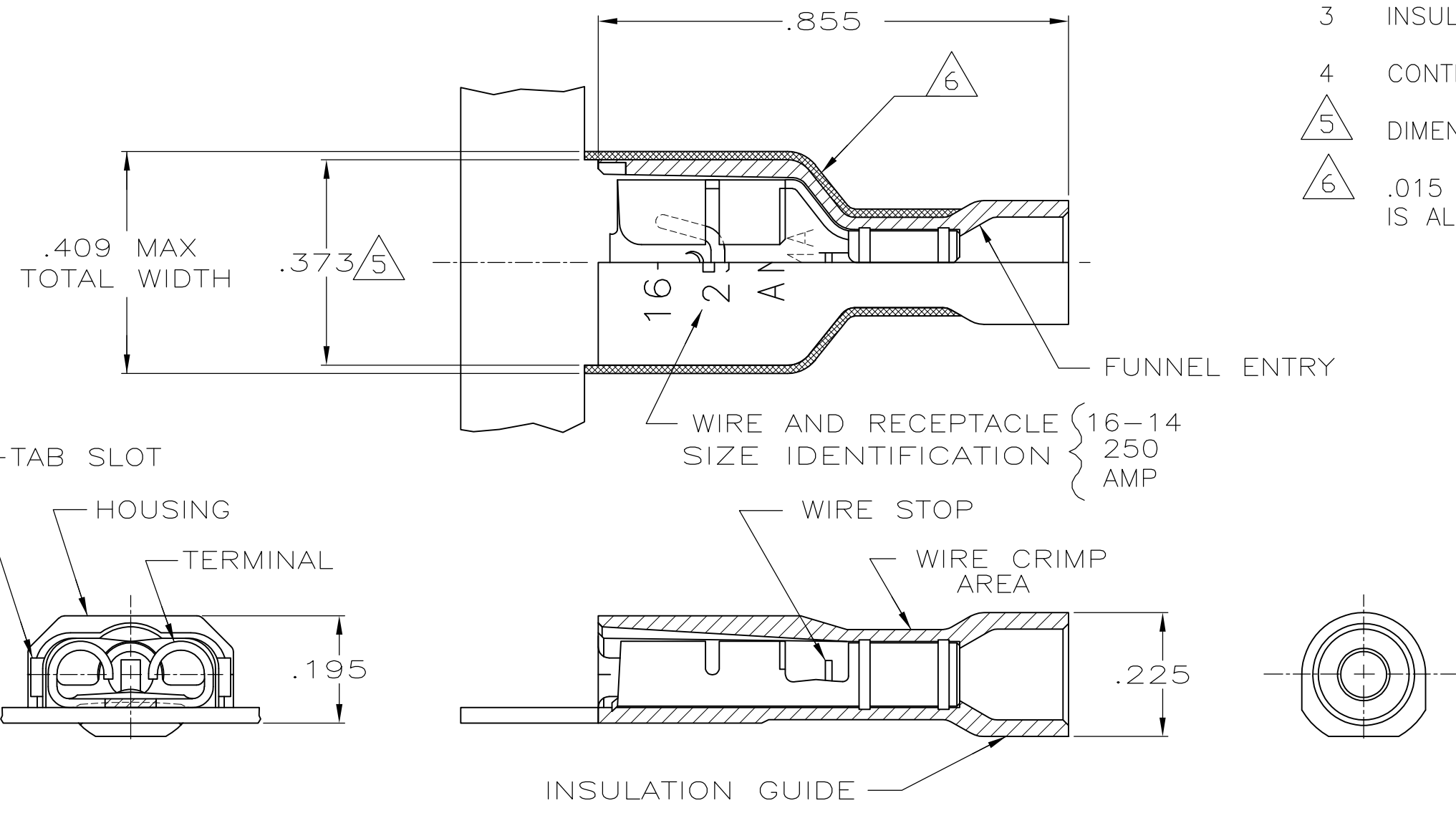
2

1

THIS DRAWING IS UNPUBLISHED. RELEASED FOR PUBLICATION
 © COPYRIGHT - By - ALL RIGHTS RESERVED.

| LOC | DIST | REVISIONS | | | |
|-----|------|---------------------------|---------|-----|------|
| P | LTR | DESCRIPTION | DATE | DWN | APVD |
| AF | 50 | | | | |
| | K | REVISED PER ECR-12-005303 | 18JUL12 | KH | KR |

- 1 MATES WITH .032±.001x.250 TAB
- 2 WIRE STRIP LENGTH .281
- 3 INSULATION SIZE .160 MAX DIA
- 4 CONTINUOUS STRIP ON REELS
- △5 DIMENSION DOES NOT INCLUDE TRIM BURR+
- △6 .015 MAX CARRIER TRIM BURR PER SIDE IS ALLOWABLE IN THE SHADED AREA



| | |
|--|------------|
| HOUSING: NYLON, COLOR-BLUE TRANSLUCENT | 3-520116-2 |
| RECEPTACLE: #3 HARD PHOS BRONZE TIN | |
| MATERIAL & FINISH | PART NO |

| | | | | | |
|--|--|--------------------------------|---|------------------------|--------------------|
| THIS DRAWING IS A CONTROLLED DOCUMENT. | | DWN P FORTNEY 10/18/88 | STE TE Connectivity | | |
| DIMENSIONS: INCHES | | CHK JR RUTH 10/18/88 | | | |
| TOLERANCES UNLESS OTHERWISE SPECIFIED: | | APVD K RANDOLPH 10/21/88 | NAME RECEPTACLE ASSY, ULTRA-FAST, .250 SERIES, 16-14 AWG | | |
| 0 PLC ± - | | PRODUCT SPEC 108-2043 | SIZE A3 | | |
| 1 PLC ± - | | APPLICATION SPEC 114-2123 | CAGE CODE 00779 | DRAWING NO C-520116 | RESTRICTED TO - |
| 2 PLC ± - | | WEIGHT - | SCALE 4:1 | | |
| 3 PLC ± .015 | | CUSTOMER DRAWING | | | |
| 4 PLC ± - | | SHEET 1 OF 1 | | | |
| ANGLES ± - | | REV K | | | |
| FINISH SEE TABLE | | | | | |