

Terminals and Splices

POSITIVE LOCK EX Series Receptacles

Double Lock Type (EX-III) 110 Series

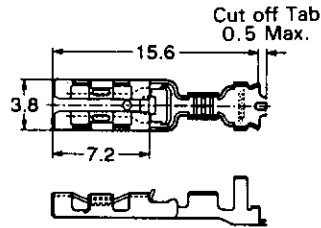
Material : Pre-tin Phosphor bronze

Product Specifications :
108-5530

Application Specifications :
114-5229

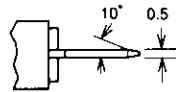
Instruction Sheet :
411-5806

Straight-type terminals

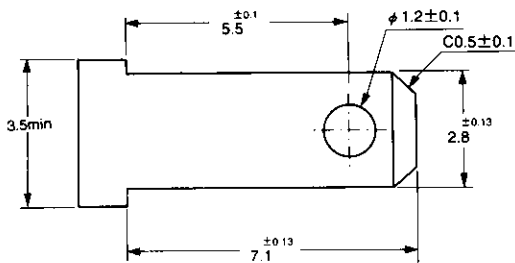


Wire Range		Wire Ins. Dia.	Part No. of Rec.		Part No. of Applicator
AWG#	mm ²		Strip Form		
26-22	0.14~0.34	1.3~2.0	353249-2	409564-2	
20-16	0.50~1.25	2.0~3.1	353250-2	1385107-2	

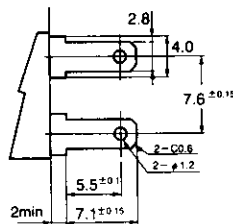
Mating Tab Dimension



1 Position



2 Position



3 Position

