

# Wire to Board Connectors

## Mini CT (Common Termination) Connector System

### Receptacle Connectors (Wire Application)

#### MT Connectors

##### Applicable wire sizes :

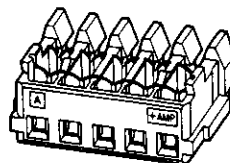
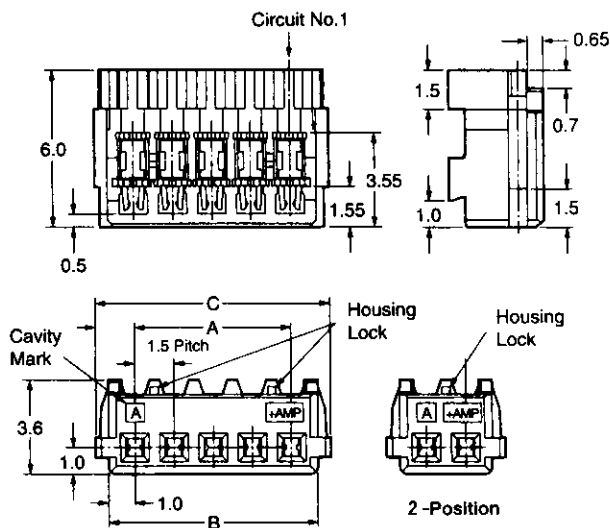
AWG #28-26  
(0.08~0.14mm<sup>2</sup>)

Insulation Dia. : 0.8~0.95mm

##### Material and Finish :

Housing — UL94V-0 rated,  
glassfiber reinforced Nylon,  
grey and blue

Contact — Tin-plated,  
phosphor bronze



No. of Pos.	Dimensions			Part No. of Receptacle Assembly	
	A	B	C	Grey	Blue
2	1.5	3.5	4.5	353293-2	5-353293-2
3	3.0	5.0	6.0	353293-3	5-353293-3
4	4.5	6.5	7.5	353293-4	5-353293-4
5	6.0	8.0	9.0	353293-5	5-353293-5
6	7.5	9.5	10.5	353293-6	5-353293-6
7	9.0	11.0	12.0	353293-7	5-353293-7
8	10.5	12.5	13.5	353293-8	5-353293-8
9	12.0	14.0	15.0	353293-9	5-353293-9
10	13.5	15.5	16.5	1-353293-0	6-353293-0
11	15.0	17.0	18.0	1-353293-1	6-353293-1
12	16.5	18.5	19.5	1-353293-2	6-353293-2
13	18.0	20.0	21.0	1-353293-3	6-353293-3
14	19.5	21.5	22.5	1-353293-4	6-353293-4
15	21.0	23.0	24.0	1-353293-5	6-353293-5
16	22.5	24.5	25.5	1-353293-6	6-353293-6
17	24.0	26.0	27.0	1-353293-7	6-353293-7
18	25.5	27.5	28.5	1-353293-8	6-353293-8
19	27.0	29.0	30.0	1-353293-9	6-353293-9
20	28.5	30.5	31.5	2-353293-0	7-353293-0