



Have a Question?
 Chat with a Product
 Information Specialist

What can we help you find?

[Products](#) |
 [Industries](#) |
 [Resources](#) |
 [About TE](#) |
 [My Account](#) |
 [Innovation](#) |
 [Support Center](#)

353907-1 Product Details

[Share](#) |
 [Print](#) |
 [Email](#)



353907-1

TE Internal Number: 353907-1

Active

View 3D PDF

1.5mm AMP Mini CT Connectors

Always EU RoHS/ELV Compliant (Statement of Compliance)

Product Highlights:

- Wire-to-Board, Wire-to-Board / Wire-to-Panel / Wire-to-Wire, Wire-to-Panel, Wire-to-Wire
- Applies To Wire/Cable
- Contact
- Contact Type = Socket
- Wire/Cable Size = 24 - 28 AWG

[View all Features](#)

Quick Links

- ▶ [Pricing & Availability](#)
- ▶ [Search for Tooling](#)
- ▶ [View Housings \(38\)](#)
- ▶ [Product Feature Selector](#)
- ▶ [Contact Us About This Product](#)

[Add to My Part List](#) |
 [Request Sample](#) |
 [Find Similar Products](#) |
 [Buy Product](#)

Documentation & Additional Information

Product Drawings:

- [AMP MINI COMMON TERMINATED \(CT\) CONNECTOR 1.5mm PIT... \(PDF, English\)](#)

Catalog Pages/Data Sheets:

- None Available

Product Specifications:

- [AMP Mini Common Termination \(CT\) Connector 1.5mm Pit... \(PDF, English\)](#)
- [1.5MM PITCH SIGNAL MATE CONNECTOR \(PDF, Japanese\)](#)
- [AMP Mini CT Connector 1.5mm Pitch \(Crimp Type\), Lead... \(PDF, Japanese\)](#)

Application Specifications:

- [AMP MINI COMMON TERMINATION \(CT\) CONNECTOR, 1.5MM PI... \(PDF, English\)](#)

Instruction Sheets:

- [1.5mm Pitch Mini CT DC Drawer Connector SF Type \(PDF, Japanese\)](#)
- [1.5mm Pitch Mini CT Hybrid Drawer Connector SF Type \(PDF, Japanese\)](#)
- [1.5mm Pitch Mini CT Hybrid Drawer Connector Slim Type \(PDF, Japanese\)](#)

CAD Files: (CAD Format & Compression Information)

- [2D Drawing \(DXF, Version J\)](#)
- [3D Model \(IGES, Version J\)](#)
- [3D Model \(STEP, Version J\)](#)

[List all Documents](#)

Related Products:

- [Tooling](#)
- [Housings \(38\)](#)

Product Features (Please use the Product Drawing for all design activity)

Product Type Features:

- Product Type = Contact
- Termination Method to Wire/Cable = Crimp
- UL File Number = E28476
- CSA File Number = LR 7189-133

Electrical Characteristics:

- Contact - Rated Current (A) = 2
- Operating Voltage Reference = AC/DC, AC, DC
- Operating Voltage (VAC) = 50
- Operating Voltage (VDC) = 50

Termination Features:

- Wire/Cable Size (AWG) = 24 - 28

Contact Features:

- Contact Type = Socket
- Contact Plating, Mating Area, Material = Pre-Tin
- Contact Plating, Mating Area, Thickness (µm [µin]) = 0.2 [7.87]

Industry Standards:

- [RoHS/ELV Compliance](#) = RoHS compliant, ELV compliant
- [Lead Free Solder Processes](#) = Not relevant for lead free process
- RoHS/ELV Compliance History = Always was RoHS compliant
- Agency/Standard = CSA, UL

Environmental:

- Operating Temperature (°C [°F]) = -30 - +105 [-22 - +221]

Conditions for Usage:

- Applies To = Wire/Cable
- Accepts Wire Insulation Diameter, Range (mm [in]) = 0.85 - 1.05 [0.0334 - 0.041]

Operation/Application:

- Application Use = Wire-to-Board, Wire-to-Board / Wire-to-Panel / Wire-to-Wire, Wire-to-Panel, Wire-to-Wire
- Contact Transmits (Typical Application) = Signal (Data)
- Pick and Place Cover = Without

Packaging Features:

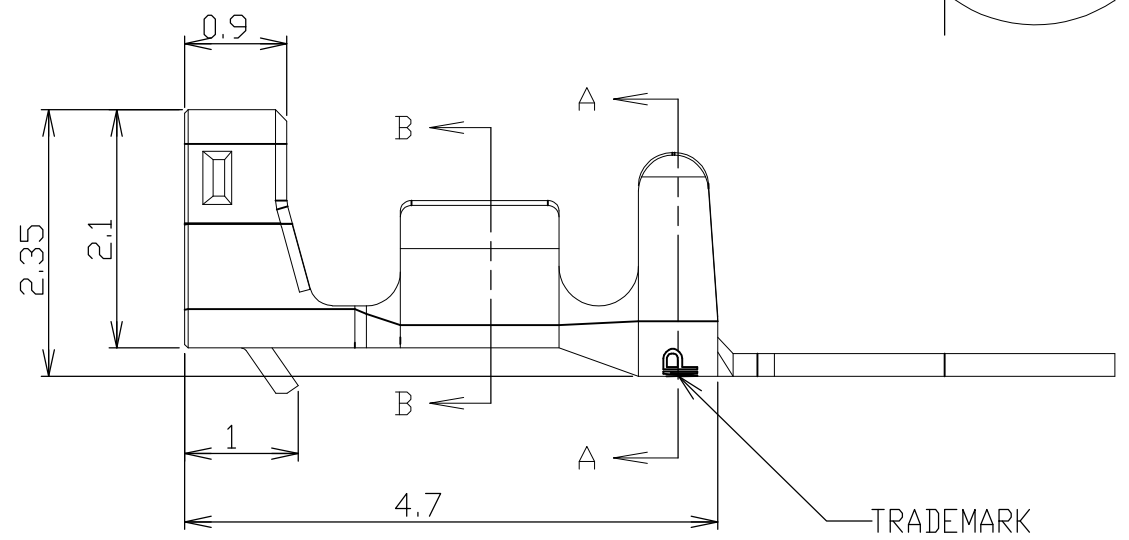
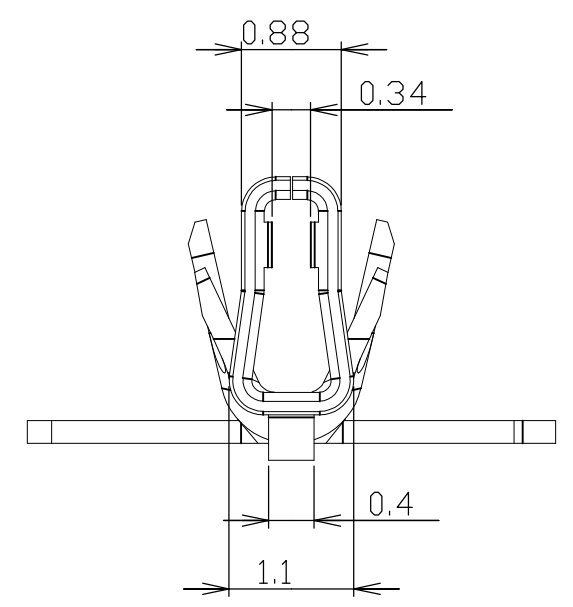
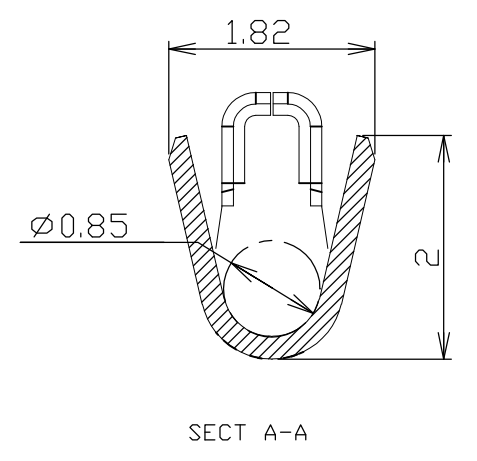
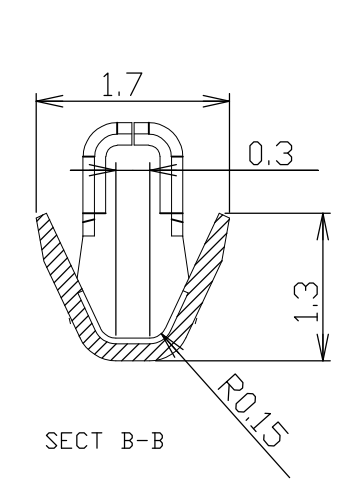
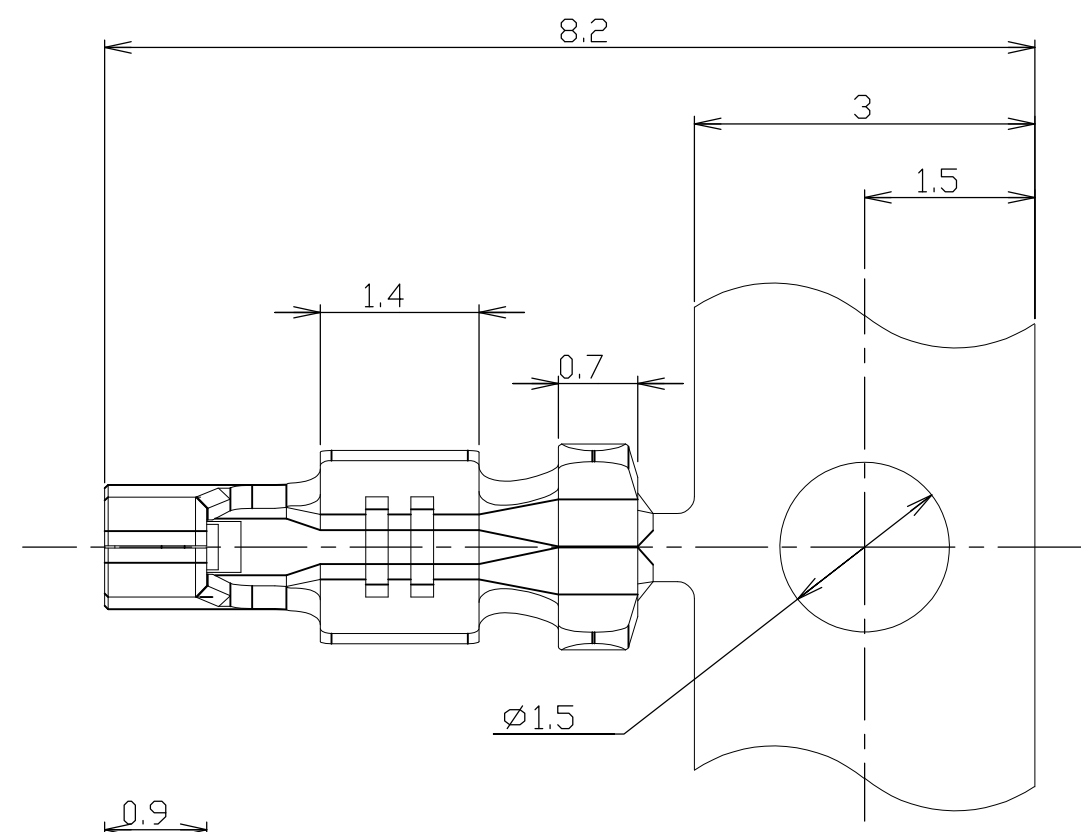
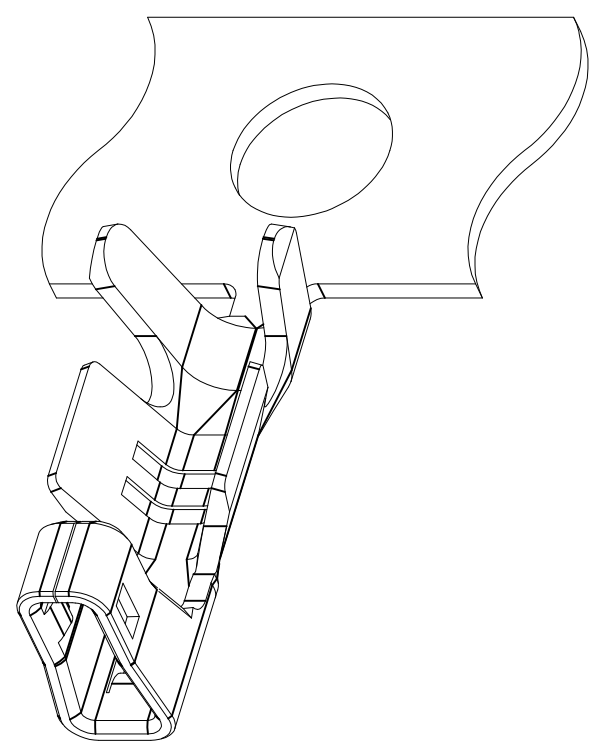
- Packaging Method = Strip

Other:

- Brand = AMP

THIS DRAWING IS UNPUBLISHED. RELEASED FOR PUBLICATION
 © COPYRIGHT - By - ALL RIGHTS RESERVED.

LOC	DIST	REVISIONS					
ES	00	P	LTR	DESCRIPTION	DATE	DWN	APVD
		C1		REVISED PER ECO-11-005033	25MAR11	RK	HMR



NOTES:
 1. LOOSE PIECE CONTACT P/N:353918-1
 2. USE WITH HOUSING P/N:X-353908-X

353907-1 AS SHOWN

GENERAL TOLERANCE

10 ≥	±0.2
30 ≥ > 10	±0.25
100 ≥ > 30	±0.3
ANGLES: ±3°	

THIS DRAWING IS A CONTROLLED DOCUMENT.

DIMENSIONS:	TOLERANCES UNLESS OTHERWISE SPECIFIED:
mm	
	0 PLC ± -
	1 PLC ± -
	2 PLC ± -
	3 PLC ± -
	4 PLC ± -
	ANGLES ± -
MATERIAL	FINISH
PHOS-BRONZE, 0.2mm THK	PRE-TIN

WIRE RANGE 0.22mm ² ~ 0.08mm ² (AWG#24~AWG#28)		INSULATION DIA Ø1.05~Ø0.85	
DWN H.HOSHINO 26.APR'97	CHK J.TANIGAWA 26.APR'97	TE Connectivity AMP MINI COMMON TERMINATED (CT) CONNECTOR 1.5mm PITCH RECEPTACLE CONTACT(AWG#24~#28), CRIMP TYPE	
APVD WL CHOO	PRODUCT SPEC 108-60025		
APPLICATION SPEC 114-5245		SIZE A3	CAGE CODE 00779
WEIGHT 0.02g/ea		DRAWING NO C-353907	RESTRICTED TO
CUSTOMER DRAWING		SCALE NON	SHEET 1 OF 1
		REV C1	