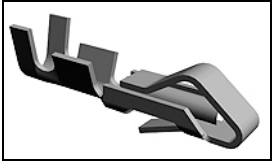


3-640252-1 Product Details

[Share](#) [Print](#) [Email](#)



3-640252-1

TE Internal Number: 3-640252-1
✔ Active

[View 3D PDF](#)

MTA, CST, CST-100 II and SL Contacts

✔ Always EU RoHS/ELV Compliant (Statement of Compliance)

Product Highlights:

- SL Product Line
- Applies To Wire/Cable
- Contact Type = Socket
- Contact Configuration = Standard
- Contact - Rated Current = 6.5 A

[View all Features](#)

Quick Links

- ▶ [Pricing & Availability](#)
- ▶ [Search for Tooling](#)
- ▶ [Product Feature Selector](#)
- ▶ [Contact Us About This Product](#)

[Add to My Part List](#) [Request Sample](#) [Find Similar Products](#) [Buy Product](#)

Documentation & Additional Information

Product Drawings:

- [RECEPTACLE, SL-156 \(PDF, English\)](#)

Catalog Pages/Data Sheets:

- [MTA, CST-100 II, SL-156 and AMP Economy Power \(EP\) C... \(PDF, English\)](#)

Product Specifications:

- [SL 156 Connectors \(PDF, English\)](#)

Application Specifications:

- [SL 156 Contacts and Housings \(PDF, English\)](#)

Instruction Sheets:

- None Available

CAD Files: [\(CAD Format & Compression Information\)](#)

- [2D Drawing \(DXF, Version W\)](#)
- [3D Model \(IGES, Version W\)](#)
- [3D Model \(STEP, Version W\)](#)

[List all Documents](#)

Additional Information:

- [Product Line Information](#)

Related Products:

- [Tooling](#)

Product Features (Please use the Product Drawing for all design activity)

Product Type Features:

- Product Line = SL
- Wire/Cable Type = Discrete Wire
- Unmating Force = High

Mechanical Attachment:

- Contact Retention Type = Locking Lance
- Contact Retention = With

Electrical Characteristics:

- Contact - Rated Current (A) = 6.5
- Operating Voltage Reference = AC
- Operating Voltage (VAC) = 250

Termination Features:

- Wire/Cable Size (mm²) = 0.2 - 0.9
- Wire/Cable Size (AWG) = 18 - 24
- [Termination Method to Wire/Cable](#) = Crimp

Body Features:

- Mating Force = High Force
- Wire Type = Stranded
- Underplate Material Thickness (µm [µin]) = 1.27 [50.000]

Contact Features:

- Contact Type = Socket
- Contact Configuration = Standard
- Contact Base Material = Brass
- Contact Plating, Mating Area, Material = Bright Tin
- Contact Plating, Mating Area, Thickness (µm [µin]) = 2.03 [80]
- Underplate Material = Nickel

Industry Standards:

- [RoHS/ELV Compliance](#) = RoHS compliant, ELV compliant
- [Lead Free Solder Processes](#) = Not relevant for lead free process
- RoHS/ELV Compliance History = Always was RoHS compliant

Environmental:

- Operating Temperature (°C [°F]) = -55 - +105 [-67 - +221]

Conditions for Usage:

- Applies To = Wire/Cable
- Accepts Wire Insulation Diameter, Range (mm [in]) = 2.80 [0.110]
- For Use With = SL-156 Housings

Packaging Features:

- Packaging Method = Reel
- Packaging Quantity = 7,500

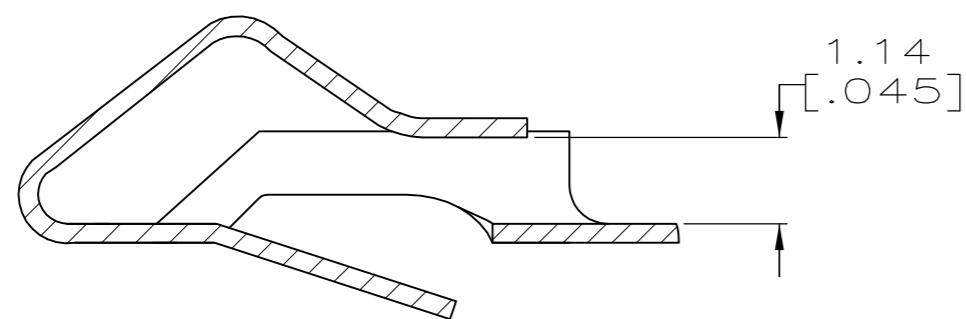
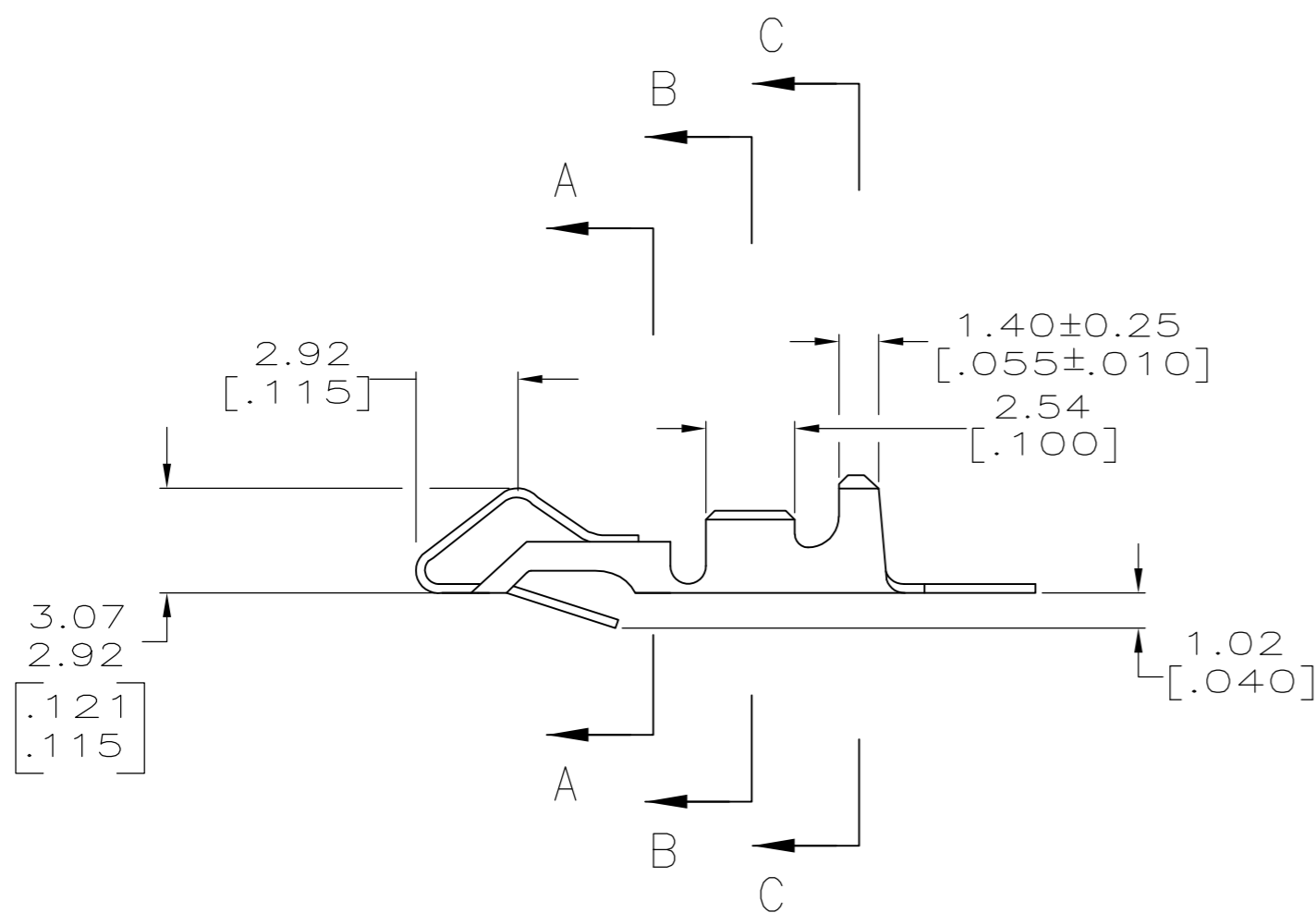
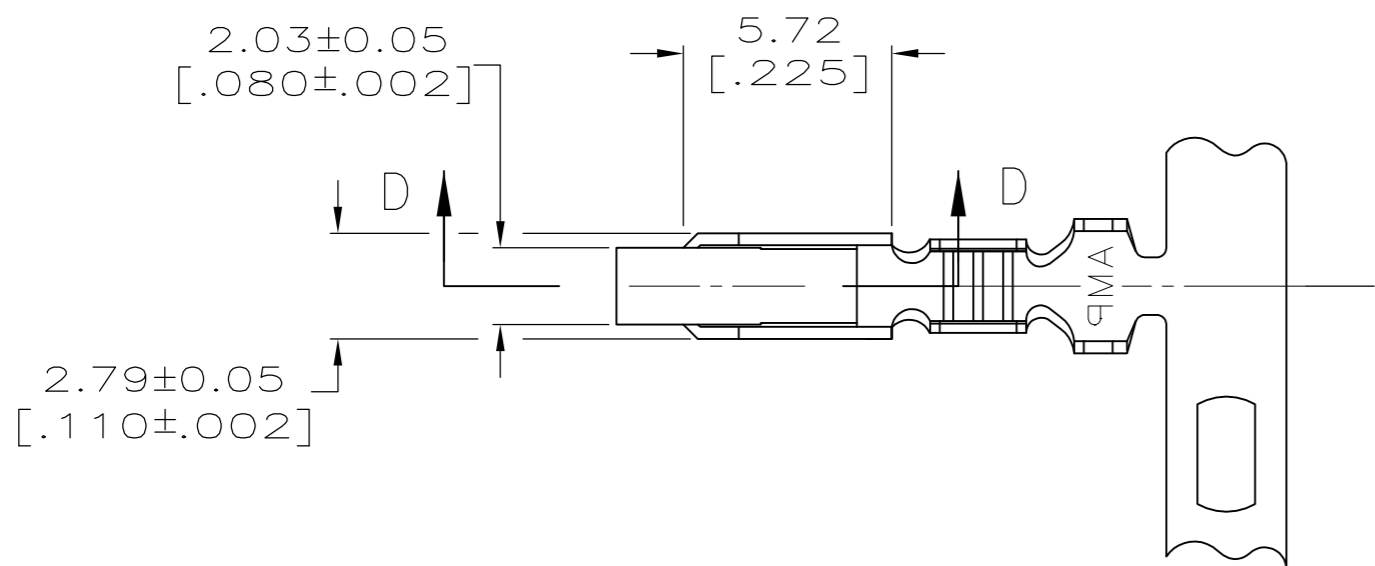
Other:

- Brand = AMP
- Comment = Recommended for 1 thru 12 position housings.

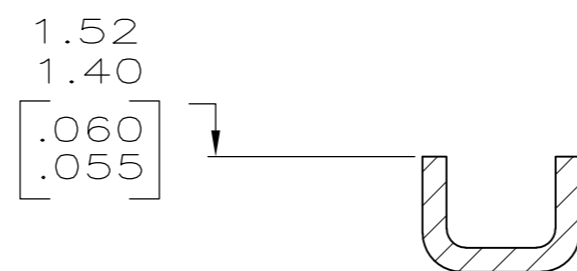
THIS DRAWING IS UNPUBLISHED. RELEASED FOR PUBLICATION
 © COPYRIGHT - By - ALL RIGHTS RESERVED.

LOC		DIST		REVISIONS			
P	LTR	DESCRIPTION		DATE	DWN	APVD	
CM	00	W1	REVISED PER ECO-11-004820	11MAR11	RK	HMR	

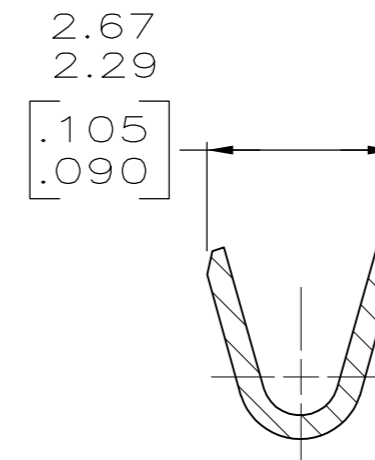
- ① 0.00203 [.000080] MIN BRIGHT TIN-LEAD OVER
0.00127 [.000050] MIN NICKEL.
- ② 0.00330 [.000130] MAX PRE-TIN.
- ③ 0.00013 [.000005] GOLD OVER 0.00127 [.000050]
MIN NICKEL ALL OVER AND 0.00076 [.000030] MIN
GOLD ON CONTACT AREA.
- 4. WIRE RANGE: 0.2-0.9mm² (24-18 AWG).
INSULATION RANGE: 2.79 [.110] DIA MAX.
- 5. DIMENSIONS IN BRACKETS ARE IN INCHES.
- ⑥ 0.00203 [.000080] MIN BRIGHT TIN OVER
0.00127 [.000050] MIN NICKEL.



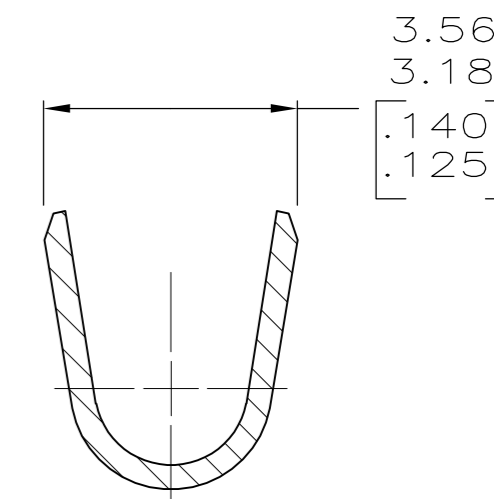
SECTION D-D
SCALE 10:1



SECTION A-A
SCALE 10:1



SECTION B-B
SCALE 10:1



SECTION C-C
SCALE 10:1

MINI	SEE 3-640706-1	⑥	3-640252-1
MINI	SEE 640706-2	②	640252-2
MINI	SEE 640706-1	①	640252-1
APPLICATOR	LOOSE PIECE	FINISH	PART NO

METRIC

THIS DRAWING IS A CONTROLLED DOCUMENT.		DWN S. CARPENTER 21AUG2003	TE Connectivity	
DIMENSIONS: INCHES	TOLERANCES UNLESS OTHERWISE SPECIFIED:	CHK J. ELLIS 21AUG2003	NAME RECEPTACLE, SL-156	
	0 PLC ±	APVD J. ELLIS 21AUG2003	SIZE A2	CAGE CODE 00779
	1 PLC ±	PRODUCT SPEC	DRAWING NO C-640252	RESTRICTED TO -
MATERIAL 0.33 [.013] BRASS	FINISH SEE TABLE	APPLICATION SPEC	SCALE 5:1	SHEET 1 of 1
CUSTOMER DRAWING			REV W1	