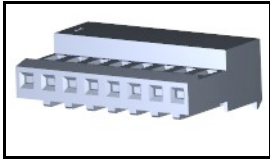


### 3-640442-8 Product Details

[Share](#) [Print](#) [Email](#)




3-640442-8

TE Internal Number: 3-640442-8

 Active

[View 3D PDF](#)

#### MTA, CST-100 II, MT-6 and SL Connectors and Headers

 Always EU RoHS/ELV Compliant  
(Statement of Compliance)

#### Product Highlights:

- MTA-100 Product Line
- MTA Series
- Wire-to-Post
- Applies To Wire/Cable
- Connector

[View all Features](#)

#### Quick Links

- ▶ [Pricing & Availability](#)
- ▶ [Search for Tooling](#)
- ▶ [View Mating Products \(38\)](#)
- ▶ [Product Feature Selector](#)
- ▶ [Contact Us About This Product](#)

[Add to My Part List](#) [Request Sample](#) [Find Similar Products](#)  
[Buy Product](#)

#### Documentation & Additional Information

##### Product Drawings:

- [MTA 100 CONNECTOR ASSEMBLY, 26 AWG, STANDARD \(PDF, English\)](#)

##### Catalog Pages/Data Sheets:

- [MTA, CST-100 II, SL-156 and AMP Economy Power \(EP\) C... \(PDF, English\)](#)

##### Product Specifications:

- None Available

##### Application Specifications:

- [MTA 100 Connector \(PDF, English\)](#)

##### Instruction Sheets:

- None Available

##### CAD Files: (CAD Format & Compression Information)

- [2D Drawing \(DXF, Version Y\)](#)
- [3D Model \(IGES, Version Y\)](#)
- [3D Model \(STEP, Version Y\)](#)

[List all Documents](#)

##### Additional Information:

- [Product Line Information](#)

##### Related Products:

- [Tooling](#)
- [Mating Products \(38\)](#)

#### Product Features (Please use the Product Drawing for all design activity)

##### Product Type Features:

- [Product Line](#) = MTA-100
- Series = MTA
- Product Type = Connector
- Connector Type = Connector Assembly
- Termination Method to Wire/Cable = IDC
- PCB Mount Retention = Without
- PCB Mount Alignment = Without
- [Connector Design](#) = Closed End
- Strain Relief = With
- Wire/Cable Type = Discrete Wire
- Sealed = No
- UL File Number = E28476
- CSA File Number = LR7189

##### Mechanical Attachment:

##### Housing Features:

- Connector Style = Receptacle
- Centerline (mm [in]) = 2.54 [0.100]
- Housing Style = Standard
- Housing Material = Nylon
- Housing Color = White
- [Mating Alignment](#) = Without
- UL Flammability Rating = UL 94V-2

##### Configuration Features:

- [Number of Positions](#) = 8
- [Post Number\(s\) Omitted](#) = None
- [Backwall/Post Interruption\(s\)](#) = Without
- Number of Rows = 1

##### Industry Standards:

- [RoHS/ELV Compliance](#) = RoHS compliant, ELV

- Contact Retention = With
- Mating Retention Type = Locking Ramp
- [Panel Mount Retention](#) = Without
- Contact Retention Type = Locking Lance

**Electrical Characteristics:**

- Contact - Rated Current (A) = 5
- Operating Voltage Reference = AC
- Operating Voltage (VAC) = 250

**Termination Features:**

- Wire/Cable Size (mm<sup>2</sup>) = 0.12 - 0.15
- Wire/Cable Size (AWG) = 26

**Body Features:**

- Wire Type = Stranded
- Mating Retention = With
- Cable Exit Angle = 90°
- Underplate Material Thickness (µm [µin]) = 0.762 [30.000]
- Assembly Integration Feature = Without

**Contact Features:**

- Contact Type = Socket
- [Contact Base Material](#) = Copper Alloy
- [Contact Plating](#), [Mating Area](#), [Material](#) = Matte Tin
- Contact Layout = In-Line
- Multiple Contact Types = Without
- Contact Plating, Mating Area, Thickness (µm [µin]) = 2.03 - 5.08 [80 - 200]
- Underplate Material = Nickel

compliant

- [Lead Free Solder Processes](#) = Not relevant for lead free process
- RoHS/ELV Compliance History = Always was RoHS compliant
- Agency/Standard = CSA, UL
- UL Rating = Recognized
- CSA Rating = Certified

**Environmental:**

- Operating Temperature (°C [°F]) = -55 - +105 [-67 - +221]

**Conditions for Usage:**

- [Applies To](#) = Wire/Cable
- Accepts Wire Insulation Diameter, Range (mm [in]) = 1.52 [0.060]
- For Use With = MTA .100 Headers & MTA .100 IDC Posted Connectors

**Operation/Application:**

- Application Use = Wire-to-Post

**Packaging Features:**

- Packaging Method = Package
- Packaging Quantity = 500

**Other:**

- Brand = AMP
- Comment = Stripe may run down between ribs

**Corporate Information**

- [About TE](#)
- [Investors](#)
- [News Room](#)
- [Supplier Portal](#)
- [Careers](#)
- [Terms & Conditions](#)
- [Privacy Policy](#)

**Quick Links**

- [Distributor Inventory](#)
- [Product Cross Reference](#)
- [Documents & Drawings](#)
- [Product Compliance Support Center](#)
- [Site Map](#)

**Customer Support**

- [Email or Chat With Us](#)
- [Find a Phone Number](#)
- [Knowledge Base](#)
- [Manage Your Account](#)

**Keep Me Informed**



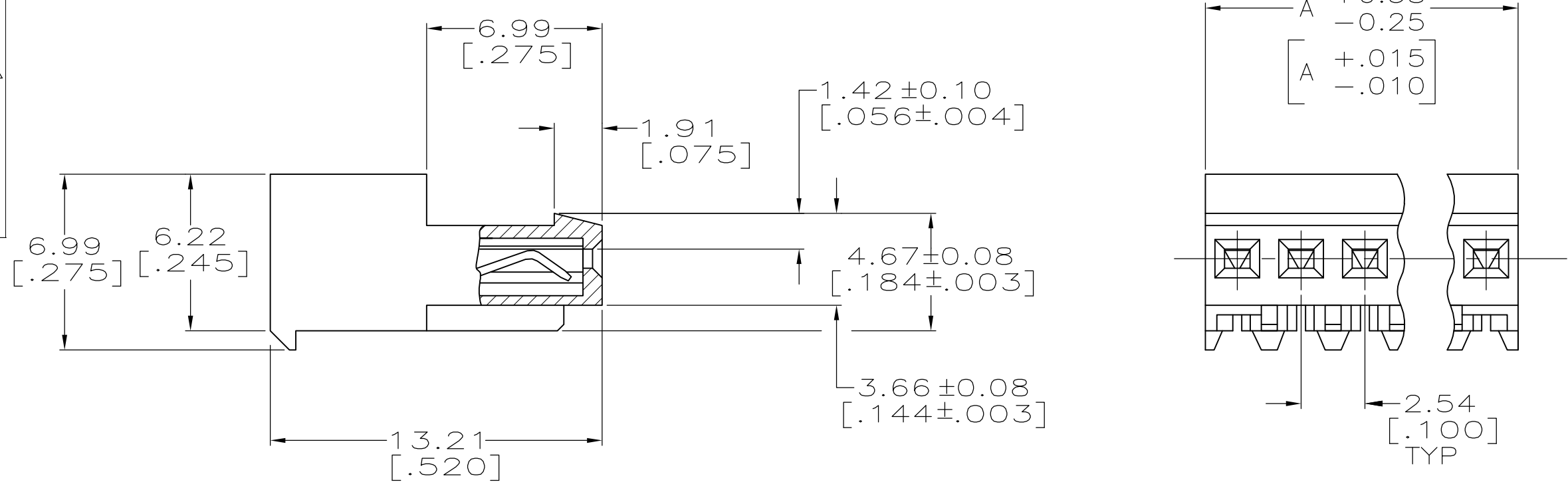
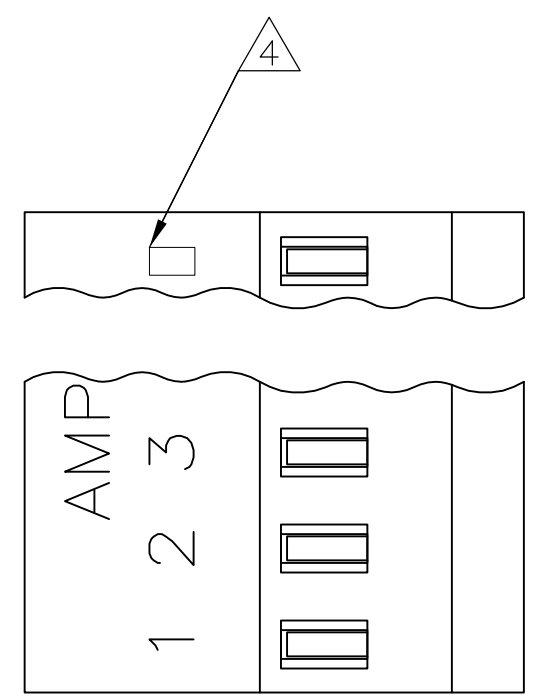
THIS DRAWING IS UNPUBLISHED. RELEASED FOR PUBLICATION  
 © COPYRIGHT - By - ALL RIGHTS RESERVED.

LOC		DIST		REVISIONS			
P	LTR	DESCRIPTION		DATE	DWN	APVD	
CM	00	Z		REVISED PER ECO-12-007492	03AUG12	KH SM	

- 1 MATERIAL: CONNECTOR - NYLON UL94V-2 .  
 CONTACTS - 0.30[.012] THICK COPPER ALLOY  
 BRIGHT TIN-LEAD .00203[.000080] MIN THICKNESS  
 FOR 640442-2 THRU 2-640442-8.  
 MATTE WHISKER MITIGATED TIN .00203[.000080] MIN THICKNESS  
 OVER NICKEL UNDERPLATE FOR 3-640442-2 THRU 5-640442-8.
- 2 CONTACTS ACCEPT 26 AWG WIRE WITH 1.52[.060] MAX  
 INSULATION DIAMETER.
- 3 CONTACTS MUST ACCEPT 0.64±0.03[.025±.001]  
 POST AND REMAIN LOCKED IN POSITION.
- 4 IDENTIFICATION NUMBER FOR LAST CIRCUIT MAY  
 NOT APPEAR ON ALL ASSEMBLIES.
- 5 DIMENSIONS IN BRACKETS ARE IN INCHES.
- 6 HOUSING FEATURES ARE: CLOSED END WITH LOCKING RAMP
- 7 OBSOLETE PARTS: OBSOLETE CIS STREAMLINING PER D.RENAUD/D.SINISI
- 8 BLUE COLOR STRIPE ON HOUSING (NOT SHOWN) MAY RUN DOWN BETWEEN RIBS.

D	YES	DIM	NO. OF CIRCUITS	PART NO.
	YES	71.12[2.800]	28	5-640442-8
	YES	68.58[2.700]	27	5-640442-7
	YES	66.04[2.600]	26	5-640442-6
	YES	63.50[2.500]	25	5-640442-5
	YES	60.96[2.400]	24	5-640442-4
	YES	58.42[2.300]	23	5-640442-3
	YES	55.88[2.200]	22	5-640442-2
	YES	53.34[2.100]	21	5-640442-1
	YES	50.80[2.000]	20	5-640442-0
	YES	48.26[1.900]	19	4-640442-9
	YES	45.72[1.800]	18	4-640442-8
	YES	43.18[1.700]	17	4-640442-7
	YES	40.64[1.600]	16	4-640442-6
	YES	38.10[1.500]	15	4-640442-5
	YES	35.56[1.400]	14	4-640442-4
	YES	33.02[1.300]	13	4-640442-3
	YES	30.48[1.200]	12	4-640442-2
	YES	27.94[1.100]	11	4-640442-1
	YES	25.40[1.000]	10	4-640442-0
	YES	22.86[.900]	9	3-640442-9
	YES	20.32[.800]	8	3-640442-8
	YES	17.78[.700]	7	3-640442-7
	YES	15.24[.600]	6	3-640442-6
	YES	12.70[.500]	5	3-640442-5
	YES	10.16[.400]	4	3-640442-4
	YES	7.62[.300]	3	3-640442-3
	YES	5.08[.200]	2	3-640442-2

B	NO	DIM	NO. OF CIRCUITS	PART NO.	REMARKS
	NO	71.12[2.800]	28	2-640442-8	SUPERCEDED BY 5-640442-8
	NO	68.58[2.700]	27	2-640442-7	SUPERCEDED BY 5-640442-7
	NO	66.04[2.600]	26	2-640442-6	SUPERCEDED BY 5-640442-6
	NO	63.50[2.500]	25	2-640442-5	SUPERCEDED BY 5-640442-5
	NO	60.96[2.400]	24	2-640442-4	SUPERCEDED BY 5-640442-4
	NO	58.42[2.300]	23	2-640442-3	SUPERCEDED BY 5-640442-3
	NO	55.88[2.200]	22	2-640442-2	SUPERCEDED BY 5-640442-2
	NO	53.34[2.100]	21	2-640442-1	SUPERCEDED BY 5-640442-1
	NO	50.80[2.000]	20	2-640442-0	SUPERCEDED BY 5-640442-0
	NO	48.26[1.900]	19	1-640442-9	SUPERCEDED BY 4-640442-9
	NO	45.72[1.800]	18	1-640442-8	OBSOLETE
	NO	43.18[1.700]	17	1-640442-7	
	NO	40.64[1.600]	16	1-640442-6	
	NO	38.10[1.500]	15	1-640442-5	
	NO	35.56[1.400]	14	1-640442-4	
	NO	33.02[1.300]	13	1-640442-3	
	NO	30.48[1.200]	12	1-640442-2	
	NO	27.94[1.100]	11	1-640442-1	SUPERCEDED BY 4-640442-1
	NO	25.40[1.000]	10	1-640442-0	
	NO	22.86[.900]	9	640442-9	
	NO	20.32[.800]	8	640442-8	
	NO	17.78[.700]	7	640442-7	
	NO	15.24[.600]	6	640442-6	
	NO	12.70[.500]	5	640442-5	
	NO	10.16[.400]	4	640442-4	
	NO	7.62[.300]	3	640442-3	
	NO	5.08[.200]	2	640442-2	



**METRIC**

THIS DRAWING IS A CONTROLLED DOCUMENT.		DWN S. CARPENTER 10JUN2003		
DIMENSIONS: mm [INCHES]		CHK D. BOSSI 10JUN2003		
TOLERANCES UNLESS OTHERWISE SPECIFIED:		APVD D. BOSSI 10JUN2003	NAME MTA 100 CONNECTOR ASSEMBLY, 26 AWG, STANDARD	
0 PLC ±		PRODUCT SPEC 108-1050	SIZE A2	CAGE CODE 00779
1 PLC ±		APPLICATION SPEC 114-1019	DRAWING NO C=640442	RESTRICTED TO -
2 PLC ±		WEIGHT	SCALE 5:1	SHEET 1 of 1
3 PLC ± 0.13 [.005]		CUSTOMER DRAWING	REV Z	
4 PLC ±				
ANGLES ±				
FINISH				