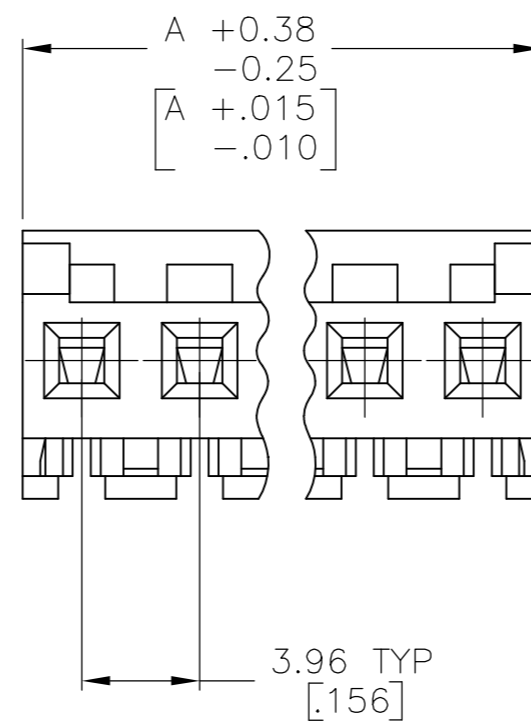
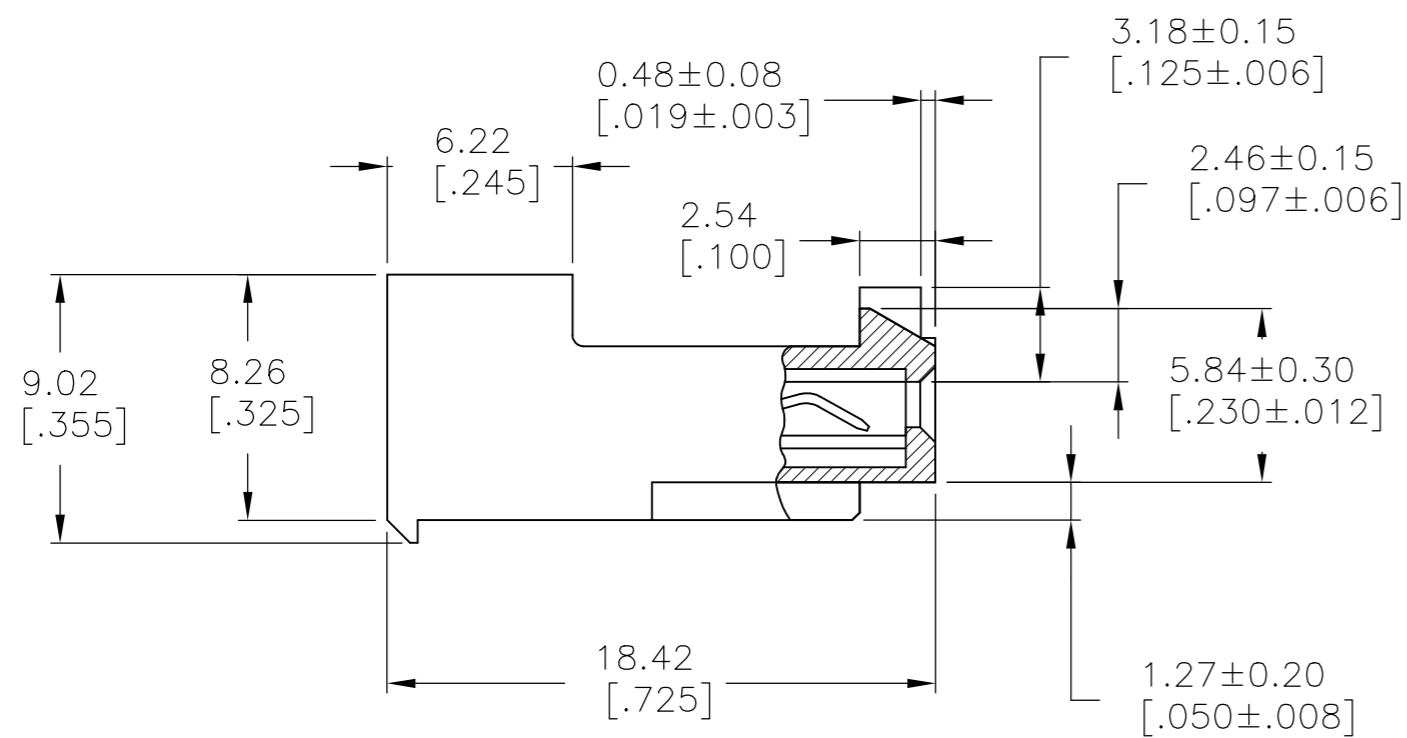
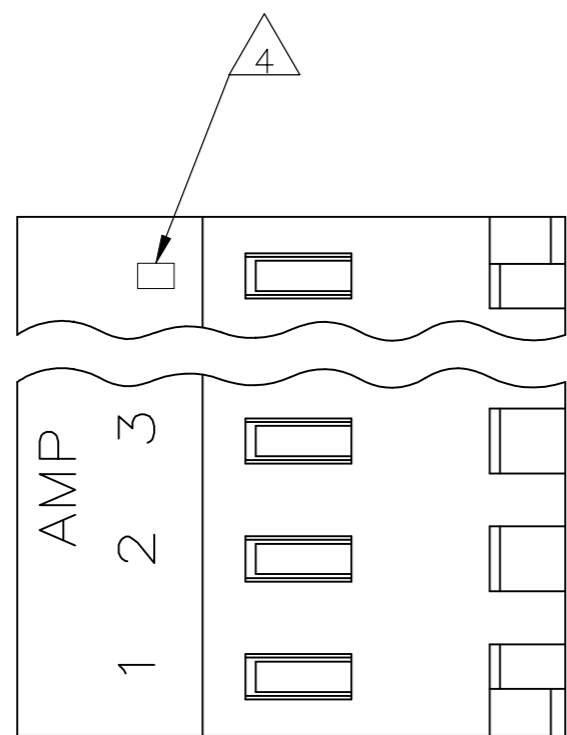


THIS DRAWING IS UNPUBLISHED. RELEASED FOR PUBLICATION
 © COPYRIGHT - By - TE CONNECTIVITY ALL RIGHTS RESERVED.

LOC	DIST	REVISIONS			
P	LTR	DESCRIPTION	DATE	DWN	APVD
CM	54	H2	REVISED PER ECR-17-018328	10JAN2018	BDA SG



1 MATERIAL: CONNECTOR - NYLON UL94V-2 (BLUE).
 CONTACTS - 0.30[.012] THICK COPPER ALLOY
 (BRIGHT TIN LEAD 0.00203
 [.000080] MIN THK FOR CONTACTS
 643821-2 THRU 2-643821-4,
 MATTE WHISKER MITIGATED TIN
 .00203(.000080) MIN THICKNESS OVER
 NICKEL UNDERPLATE FOR 3-643821-2
 THRU 5-643821-4)

2 CONTACTS ACCEPT 26 AWG WIRE WITH 2.41[.095] MAX
 INSULATION DIAMETER.

3 CONTACTS MUST ACCEPT 1.14±0.03 [.045±.001] SQUARE
 POST AND REMAIN LOCKED IN POSITION.

4 IDENTIFICATION NUMBER FOR LAST CIRCUIT MAY
 NOT APPEAR ON ALL ASSEMBLIES.

5 DIMENSIONS IN BRACKETS ARE IN INCHES.

6 HOUSING FEATURES ARE: CLOSED END WITH LOCKING
 RAMP & POLARIZING TABS.

7 OBSOLETE PARTS: OBSOLETE CIS STREAMLINING PER D.RENAUD/D.SINISI

8 OBSOLETE PARTS

DIM A	NO OF CIRCUITS	PART NO
95.10 [3.744]	24	5-643821-4
91.14 [3.588]	23	5-643821-3
87.17 [3.432]	22	5-643821-2
83.21 [3.276]	21	5-643821-1
79.25 [3.120]	20	5-643821-0
75.29 [2.964]	19	4-643821-9
71.32 [2.808]	18	4-643821-8
67.36 [2.652]	17	4-643821-7
63.40 [2.496]	16	4-643821-6
59.44 [2.340]	15	4-643821-5
55.47 [2.184]	14	4-643821-4
51.51 [2.028]	13	4-643821-3
47.55 [1.872]	12	4-643821-2
43.59 [1.716]	11	4-643821-1
39.62 [1.560]	10	4-643821-0
35.66 [1.404]	9	3-643821-9
31.70 [1.248]	8	3-643821-8
27.74 [1.092]	7	3-643821-7
23.77 [.936]	6	3-643821-6
19.81 [.780]	5	3-643821-5
15.85 [.624]	4	3-643821-4
11.89 [.468]	3	3-643821-3
7.92 [.312]	2	3-643821-2
95.10 [3.744]	24	2-643821-4
91.14 [3.588]	23	2-643821-3
87.17 [3.432]	22	2-643821-2
83.21 [3.276]	21	2-643821-1
79.25 [3.120]	20	2-643821-0
75.29 [2.964]	19	1-643821-9
71.32 [2.808]	18	1-643821-8
67.36 [2.652]	17	1-643821-7
63.40 [2.496]	16	1-643821-6
59.44 [2.340]	15	1-643821-5
55.47 [2.184]	14	1-643821-4
51.51 [2.028]	13	1-643821-3
47.55 [1.872]	12	1-643821-2
43.59 [1.716]	11	1-643821-1
39.62 [1.560]	10	1-643821-0
35.66 [1.404]	9	-643821-9
31.70 [1.248]	8	-643821-8
27.74 [1.092]	7	-643821-7
23.77 [.936]	6	-643821-6
19.81 [.780]	5	-643821-5
15.85 [.624]	4	-643821-4
11.89 [.468]	3	-643821-3
7.92 [.312]	2	-643821-2

7 SUPERSEDED

8 OBSOLETE SUPERSEDED

7 SUPERSEDED

8 SUPERSEDED

THIS DRAWING IS A CONTROLLED DOCUMENT.		DWN B.LEWIS 12MAR96		
DIMENSIONS: mm [INCHES]		CHK R.SWING 12MAR96		
TOLERANCES UNLESS OTHERWISE SPECIFIED:		APVD D.CLARK 12MAR96	NAME MTA-156 CONNECTOR ASSEMBLY 26 AWG, STANDARD	
0 PLC ± -		PRODUCT SPEC 108-1051	SIZE A2	
1 PLC ± -		APPLICATION SPEC 114-1020	CAGE CODE 00779	
2 PLC ± -		WEIGHT	DRAWING NO 643821	
3 PLC ± -		FINISH	RESTRICTED TO -	
4 PLC ± -		MATERIAL 1	SCALE 4:1	
ANGLES ± -		CUSTOMER DRAWING		SHEET 1 of 1
				REV H2