

Distributed by:

**JAMECO**<sup>®</sup>  
ELECTRONICS

**www.Jameco.com ♦ 1-800-831-4242**

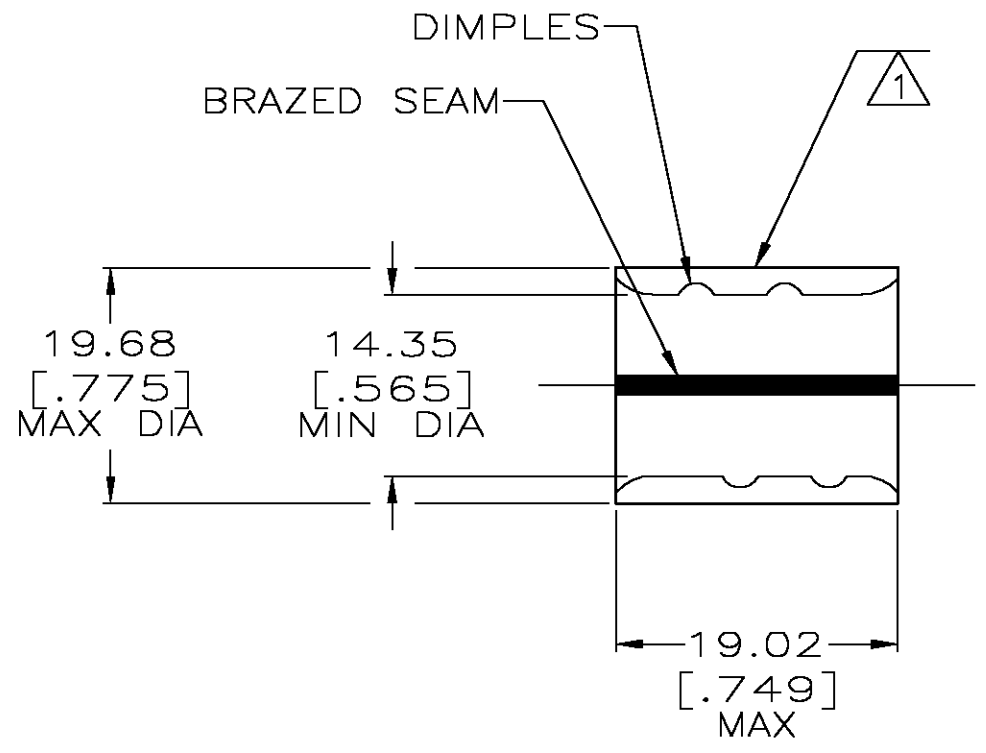
The content and copyrights of the attached  
material are the property of its owner.

Jameco Part Number 942858

THIS DRAWING IS UNPUBLISHED. RELEASED FOR PUBLICATION  
 © COPYRIGHT - BY TYCO ELECTRONICS CORPORATION. ALL RIGHTS RESERVED.

LOC	DIST	REVISIONS					
		P	LTR	DESCRIPTION	DATE	DWN	APVD
G	14		E	REV PER 0G3A-0228-04	29MAR04	JR	CK

<b>AMP</b> WIRE RANGE	Listed FILE E13288	LR7189 Certified
3/0 AWG SOLID OR STRANDED	3/0 AWG STRANDED	3/0 AWG SOLID OR STRANDED



- ① STAMP AMP 3/0W\* 150 LOCATE APPROX AS SHOWN
- 2 MATERIAL THK: 2.31 ±0.08 [0.091 ±0.003]
- ③ TIN PL 0.00254 [0.000100] MIN THK PER ASTM B545.
- ④ CLEANED, UNPLATED
- ⑤ P/N 1-36909-1 IS NOT UL OR CSA LISTED.
- 6 STAMP FOR MANUFACTURING LOCATION OR CODE PERMISSIBLE.
- ⑦ PREPRODUCTION - FASR REQ.

④	-	LOOSE PIECE	⑤⑦ 36909-1
③	-	LOOSE PIECE	36909
FINISH	QTY	PACKAGE TYPE	PART NO

**AMP INCORPORATED**  
**CUSTOMER SERVICE SYSTEMS**

FOR ADDITIONAL PRODUCT INFORMATION OR COPIES OF DRAWINGS AND TECHNICAL DOCUMENTS  
 PRODUCT INFORMATION CENTER  
 1-800-522-6752

FOR APPLICATION TOOLING INFORMATION  
 TOOLING ASSISTANCE CENTER  
 1-800-722-1111

FOR ORDER ENTRY  
 1-800-526-5142

MAX RECOMMENDED OPERATING TEMPERATURE:  
 170° C

VOLTAGE RATING:  
 N/A

CIRCULAR MIL AREA:  
 150,500-190,000  
 SOLID OR STRANDED

THIS DRAWING IS A CONTROLLED DOCUMENT.

DIMENSIONS: INCHES

TOLERANCES UNLESS OTHERWISE SPECIFIED:

0 PLC	± -
1 PLC	± -
2 PLC	± 0.20[.008]
3 PLC	± -
4 PLC	± -
ANGLES	± -

MATERIAL: COPPER ASTM B-152 ANNEALED

FINISH: SEE TABLE

DWN JR RUTH 14FEB01		Tyco Electronics Corporation Harrisburg, Pa 17105-3608	
CHK MS FEHER 14FEB01		NAME SPLICE, PARALLEL, SOLISTRAND	
APVD M SPICER 14FEB01		SIZE A3	CAGE CODE 00779
PRODUCT SPEC -	RESTRICTED TO -	SCALE 2:1	SHEET 1 OF 1
APPLICATION SPEC -	CUSTOMER DRAWING	REV E	