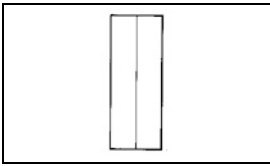


36946 Product Details

[Share](#) [Print](#) [Email](#)



36946

TE Internal Number: 36946

Active

[View 3D PDF](#)

Splices - Closed Barrel

Always EU RoHS/ELV Compliant (Statement of Compliance)

Product Highlights:

- Splice
- Not Sealed
- Splice Type = Parallel
- Body Style = SOLISTRAND
- Uninsulated

[View all Features](#)

Quick Links

- ▶ [Pricing & Availability](#)
- ▶ [Search for Tooling](#)
- ▶ [Product Feature Selector](#)
- ▶ [Contact Us About This Product](#)

[Add to My Part List](#) [Request Sample](#) [Find Similar Products](#) [Buy Product](#)

Documentation & Additional Information

Product Drawings:

- [SPLICE, PARALLEL, SOLISTRAND](#) (PDF, English)

Catalog Pages/Data Sheets:

- None Available

Product Specifications:

- None Available

Application Specifications:

- None Available

Instruction Sheets:

- None Available

CAD Files: [\(CAD Format & Compression Information\)](#)

- [2D Drawing](#) (DXF, Version S)
- [3D Model](#) (IGES, Version S)
- [3D Model](#) (STEP, Version S)

[List all Documents](#)

Related Products:

- [Tooling](#)

Product Features (Please use the Product Drawing for all design activity)

Product Type Features:

- [Product Type](#) = Splice
- [Sealed](#) = No
- [Splice Type](#) = Parallel
- [Insulation](#) = No
- [Insulation Support](#) = Non-Insulation Support
- [Finish](#) = Tin
- [Color](#) = None

Termination Features:

- [Wire/Cable Size \(CMA\)](#) = 83,700 - 119,500

Dimensions:

- [Inside Diameter \(mm \[in\]\)](#) = 11.27 [0.444]

Body Features:

- [Body Style](#) = SOLISTRAND
- [Wire Range \(mm \[AWG\]\)](#) = 41.00-60.00; [1/0]
- [Material](#) = Copper
- [Stock Thickness \(mm \[in\]\)](#) = 1.85 [0.073]
- [Nominal Outside Diameter \(mm \[in\]\)](#) = 15.58 [0.613]

Industry Standards:

- [Government/Industry Qualification](#) = No
- [RoHS/ELV Compliance](#) = RoHS compliant, ELV compliant
- [Lead Free Solder Processes](#) = Not relevant for lead free process
- [RoHS/ELV Compliance History](#) = Always was RoHS compliant

Packaging Features:

- [Packaging Method](#) = Loose Piece

Other:

- [Brand](#) = AMP

Corporate Information

- [About TE](#)
- [Investors](#)
- [News Room](#)
- [Supplier Portal](#)

Quick Links

- [Distributor Inventory](#)
- [Product Cross Reference](#)
- [Documents & Drawings](#)
- [Product Compliance Support Center](#)

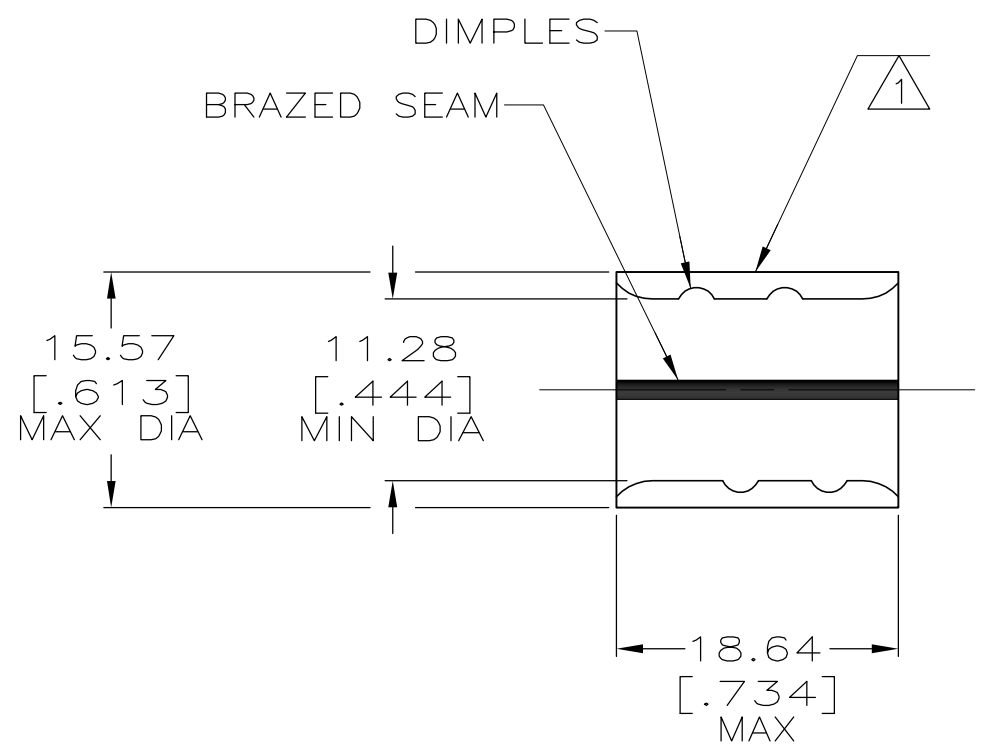
Customer Support

- [Email or Chat With Us](#)
- [Find a Phone Number](#)
- [Knowledge Base](#)
- [Manage Your Account](#)

THIS DRAWING IS UNPUBLISHED. RELEASED FOR PUBLICATION
 © COPYRIGHT BY TYCO ELECTRONICS CORPORATION. ALL RIGHTS RESERVED.

LOC	DIST	REVISIONS					
		P	LTR	DESCRIPTION	DATE	DWN	APVD
G	14		H	REV PER ECR 08-027230	31OCT08	JR	RL

AMP WIRE RANGE	Listed FILE E13288	LR7189 Certified
1/0 AWG SOLID OR STRANDED	1/0 AWG SOLID OR STRANDED	1/0 AWG SOLID OR STRANDED



- 1 STAMP AMP 1/0W* 100 LOCATE APPROX AS SHOWN
- 2 MATERIAL THK: 1.78 ±0.08 [.070±.003]
- 3 TIN PL 0.00254 [.000100] MIN THK PER ASTM B545.
- 4 CLEANED, UNPLATED
- 5 P/N 1-36946-1 IS NOT UL OR CSA LISTED.
- 6 STAMP FOR MANUFACTURING LOCATION OR CODE PERMISSIBLE.
- 7 COPPER PER ASTM B-152, ANNEALED
- 8 PREPRODUCTION - FASR REQ.
- 9 0.00254 [.000100] MIN TIN/LEAD (60/40) PLATE PER SAE-AMS-P-81728
- 10 NOT UL OR CSA LISTED

FINISH	QTY	PACKAGE TYPE	PART NO
9	-	LOOSE PIECE	10 8 36946-2
3	10	LOOSE PIECE, BOX	8-36946-5
3	400	LOOSE PIECE, BOX	8-36946-4
4	-	LOOSE PIECE	5 8 1-36946-1
3	-	LOOSE PIECE	36946

AMP INCORPORATED CUSTOMER SERVICE SYSTEMS		MAX RECOMMENDED OPERATING TEMPERATURE: 170° C	THIS DRAWING IS A CONTROLLED DOCUMENT.		DWN DK SCHRUM 5/21/93	Tyco Electronics Corporation Harrisburg, PA 17105-3608	
FOR ADDITIONAL PRODUCT INFORMATION OR COPIES OF DRAWINGS AND TECHNICAL DOCUMENTS	PRODUCT INFORMATION CENTER 1-800-522-6752	VOLTAGE RATING: N/A	DIMENSIONS: MM [INCHES]	TOLERANCES UNLESS OTHERWISE SPECIFIED:	CHK RD HEIM 5/21/93	NAME SPLICE, PARALLEL, SOLISTRAND	
FOR APPLICATION TOOLING INFORMATION	TOOLING ASSISTANCE CENTER 1-800-722-1111	CIRCULAR MIL AREA: 42.4-60.6mm² [83,700-119,500] SOLID OR STRANDED		0 PLC ± - 1 PLC ± - 2 PLC ± 0.20[.008] 3 PLC ± - 4 PLC ± - ANGLES ± -	APVD CR RHOADS 5/21/93	PRODUCT SPEC	SIZE
FOR ORDER ENTRY	1-800-526-5142	THIS DRAWING IS A CONTROLLED DOCUMENT FOR AMP INCORPORATED. IT IS SUBJECT TO CHANGE AND THE CONTROLLING ENGINEERING ORGANIZATION SHOULD BE CONTACTED FOR THE LATEST REVISION.	MATERIAL - 7	FINISH SEE TABLE	APPLICATION SPEC	RESTRICTED TO	CAGE CODE
					WEIGHT	DRAWING NO	SCALE
					-	A3 00779 C-36946	2:1
					CUSTOMER DRAWING		SHEET 1 OF 1
							REV H