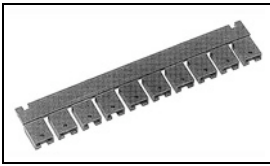


382811-2 Product Details

[Share](#) [Print](#) [Email](#)



382811-2

TE Internal Number: 382811-2
 Active

[View 3D PDF](#)

Post Shunts

Always EU RoHS/ELV Compliant (Statement of Compliance)

Product Highlights:

- Shunt
- Shunt Type = Economy
- 2 Positions
- 2.54 mm Centerline
- Gold (15) Contact Plating, Mating Area, Material

[View all Features](#)

Quick Links

- ▶ [Pricing & Availability](#)
- ▶ [Search for Tooling](#)
- ▶ [Product Feature Selector](#)
- ▶ [Contact Us About This Product](#)

[Add to My Part List](#) [Request Sample](#) [Find Similar Products](#) [Buy Product](#)

Documentation & Additional Information

Product Drawings:

- [ECONOMY SHUNT ASSEMBLY \(PDF, English\)](#)

Catalog Pages/Data Sheets:

- [AMPMODU_INTERCONNECTION_SYSTEM_SECTION_6_7AND8 \(PDF, English\)](#)

Product Specifications:

- None Available

Application Specifications:

- None Available

Instruction Sheets:

- [Low Profile, Economy, and Dual Beam Shunt Connectors... \(PDF, English\)](#)

CAD Files: [\(CAD Format & Compression Information\)](#)

- [2D Drawing \(DXF, Version K\)](#)
- [3D Model \(IGES, Version K\)](#)
- [3D Model \(STEP, Version K\)](#)

[List all Documents](#)

Additional Information:

- [Product Line Information](#)

Related Products:

- [Tooling](#)

Product Features (Please use the Product Drawing for all design activity)

Product Type Features:

- Product Type = Shunt
- Shunt Type = Economy
- Shunt Style = Open Top
- Profile = Low

Electrical Characteristics:

- Contact - Rated Current (A) = 3
- Dielectric Withstanding Voltage (V) = 1000
- Insulation Resistance (MΩ) = 1,000

Dimensions:

- Height (mm [in]) = 6.35 [0.250]

Body Features:

- Handle = Without

Contact Features:

- Contact Plating, Mating Area, Material = Gold (15)
- Contact Base Material = Phosphor Bronze

Housing Features:

- Centerline (mm [in]) = 2.54 [0.100]
- Housing Color = Blue
- Housing Material = Polyester GF
- UL Flammability Rating = UL 94V-0

Configuration Features:

- Number of Positions = 2

Industry Standards:

- RoHS/ELV Compliance = RoHS compliant, ELV compliant
- Lead Free Solder Processes = Not relevant for lead free process
- RoHS/ELV Compliance History = Always was RoHS compliant
- UL Rating = Recognized
- CSA Certified = Yes

Conditions for Usage:

- Temperature Range (°C) = -65 - +105

Packaging Features:

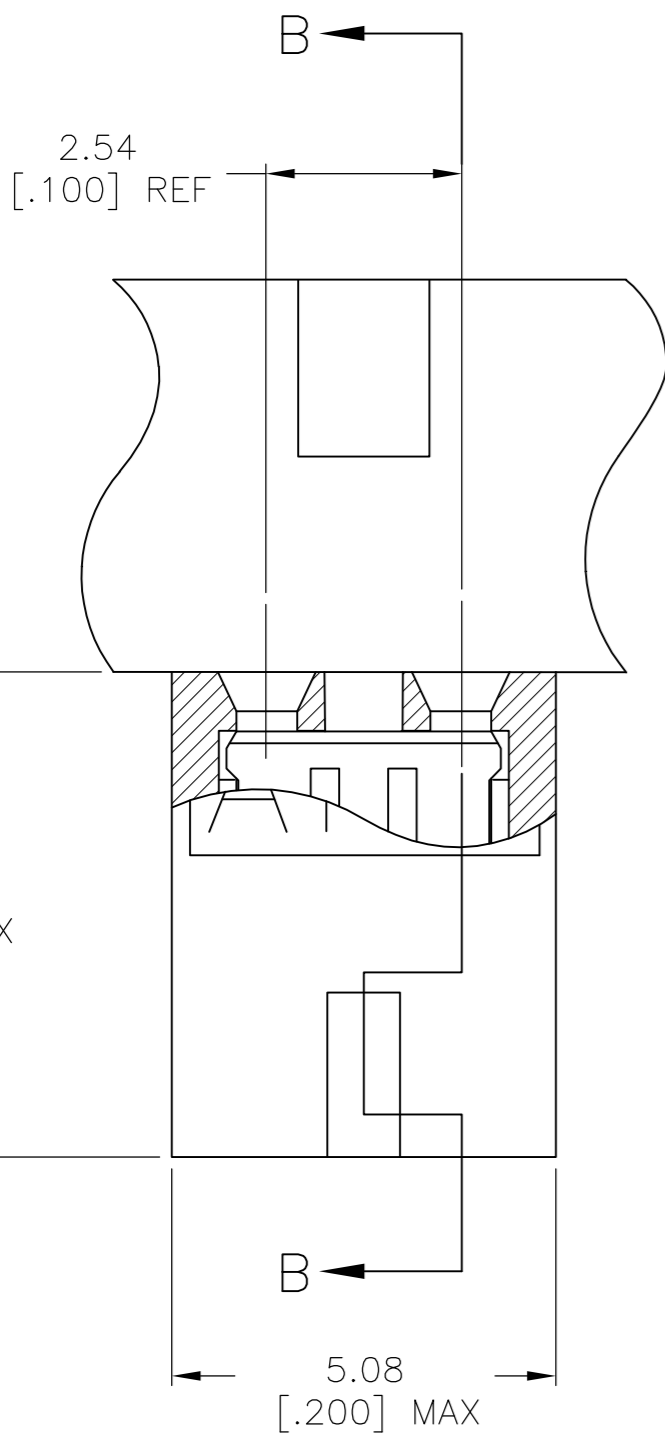
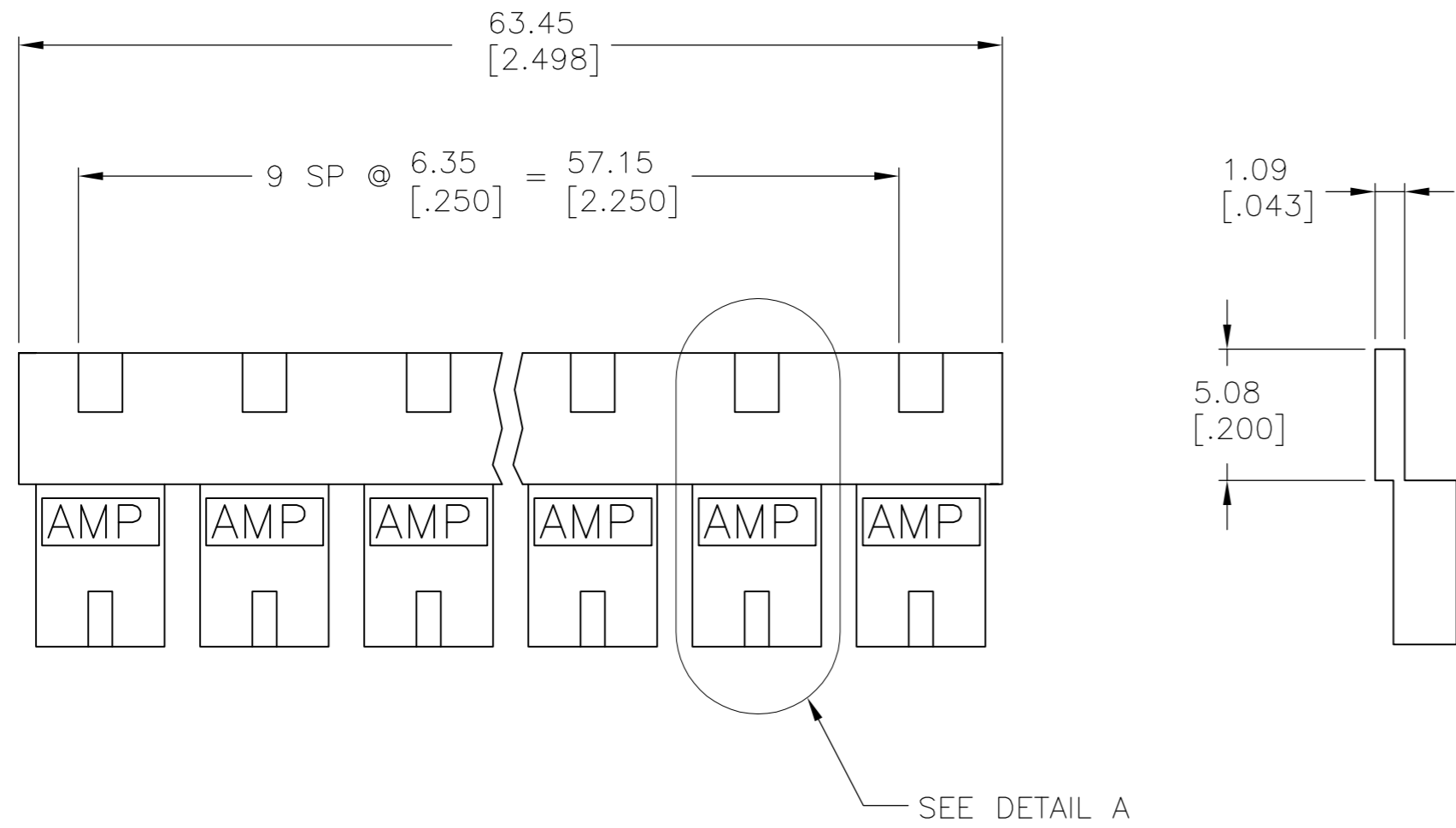
- Packaging Method = Stick of 10

Other:

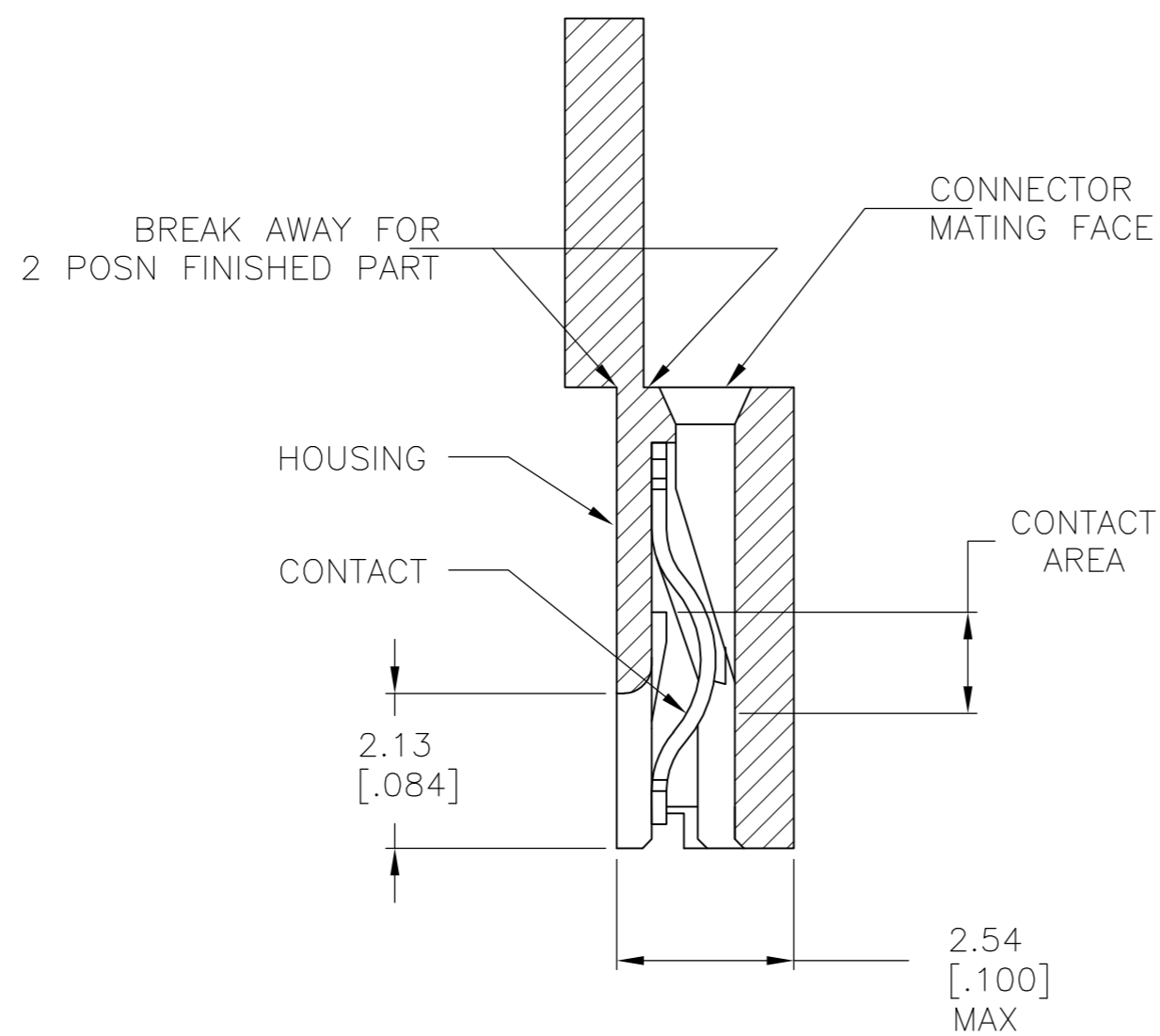
- Brand = AMP

THIS DRAWING IS UNPUBLISHED. RELEASED FOR PUBLICATION
 © COPYRIGHT - By - ALL RIGHTS RESERVED.

LOC	DIST	REVISIONS			
P	LTR	DESCRIPTION	DATE	DWN	APVD
AG	53				
	K2	REVISED PER ECO-11-018720	14SEP11	KBH	MM



DETAIL A
 SCALE 10:1



SECTION B-B
 SCALE 10:1

- 1 MATERIAL:
HOUSING: GLASS-FILLED POLYESTER, COLOR-SEE TABLE.
- 2 CONTACT PLATED WITH 0.00254 [.000100] TIN-LEAD OVER ALL.
- 3 CONTACT PLATED WITH 0.00038 [.000015] GOLD IN CONTACT AREA OVER 0.00127 [.000050] NICKEL OVER ALL.
- 4 PART NO. DENOTES INDIVIDUAL TWO POSITION SHUNT, WHICH IS PACKAGED ON BREAKAWAY COMBS OF TEN SHUNTS.
- 5. CONNECTOR MATES WITH WIRE WRAP POSTS, 0.64 [.025] SQUARE OR ROUND AND 0.56 [.022] X 0.66 [.026] POSTS. LENGTH 5.08 [.200] MINIMUM.
- 6 CONTACT PLATED WITH 0.00013 [.000005] GOLD IN CONTACT AREA OVER 0.00127 [.000050] NICKEL OVER ALL.
- 7 PART NO. DENOTES INDIVIDUAL TWO POSITION SHUNT WHICH IS PACKAGED LOOSE PIECE.
- 8 CONTACT PLATED WITH 0.00076 [.000030] GOLD IN CONTACT AREA OVER 0.00127 [.000050] NICKEL OVERALL.
- 9 CONTACT PLATED WITH 0.00254 [.000100] MATTE TIN OVER ALL.

MATERIAL	HOUSING COLOR	FINISH	PART NO
PHOSPHOR BRONZE	BLACK	9	2-382811-1 4
	BLACK	8	2-382811-0 4
	BLACK	6	1-382811-8 7
OBSOLETE	BLACK	3	1-382811-6 7
	BLACK	3	1-382811-0 4
PHOSPHOR BRONZE	RED	3	382811-9 4
	BLACK	6	382811-8 4
	BLACK	3	382811-6 4
	BLACK	2	382811-5 4
	BLUE	6	382811-4 4
	BLUE	3	382811-2 4
OBSOLETE	BLUE	2	382811-1 4

THIS DRAWING IS A CONTROLLED DOCUMENT.		DWN W. SORAH 8-18-93	STE TE Connectivity	
DIMENSIONS: mm [INCHES]		CHK R. TALLEY 8-23-93		
TOLERANCES UNLESS OTHERWISE SPECIFIED:		APVD D. HUFFMAN 8-23-93	NAME	
0 PLC ± -		PRODUCT SPEC	ECONOMY SHUNT ASSEMBLY	
1 PLC ± -		108-1476	SIZE CAGE CODE DRAWING NO RESTRICTED TO	
2 PLC ± 0.26 [.010]		APPLICATION SPEC	A2 00779 C-382811	
3 PLC ± -		114-1059	SCALE 4:1 SHEET 1 OF 1 REV K2	
4 PLC ± -		WEIGHT -		
ANGLES ± -		CUSTOMER DRAWING		
FINISH		SEE TABLE		