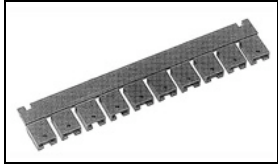


382811-6 Product Details



382811-6

TE Internal Number: 382811-6



Post Shunts

 Always EU RoHS/ELV Compliant (Statement of Compliance)

Product Highlights:

- Shunt
- Shunt Type = Economy
- 2 Positions
- 2.54 mm Centerline
- Gold (15) Contact Plating, Mating Area, Material

Documentation & Additional Information

Product Drawings:

- [ECONOMY SHUNT ASSEMBLY](#) (PDF, English)

Catalog Pages/Data Sheets:

- [AMPMODU_INTERCONNECTION_SYSTEM_SECTION_6_7AND8](#) (PDF, English)

Product Specifications:

- [CONNECTOR, LOW PROFILE ECONOMY & MULTI-POSITION SHUNT](#) (PDF, English)

Application Specifications:

- None Available

Instruction Sheets:

- [Low Profile, Economy, and Dual Beam Shunt Connectors...](#) (PDF, English)

CAD Files: (CAD Format & Compression Information)

- [2D Drawing](#) (DXF, Version K)
- [3D Model](#) (IGES, Version K)
- [3D Model](#) (STEP, Version K)

Additional Information:

- [Product Line Information](#)

Related Products:

- [Tooling](#)

Product Features (Please use the Product Drawing for all design activity)

Product Type Features:

- Product Type = Shunt
- Shunt Type = Economy
- Shunt Style = Open Top
- Profile = Low

Electrical Characteristics:

- Contact - Rated Current (A) = 3
- Dielectric Withstanding Voltage (V) = 1000
- Insulation Resistance (MΩ) = 1,000

Dimensions:

- Height (mm [in]) = 6.35 [0.250]

Body Features:

- Handle = Without

Contact Features:

- Contact Plating, Mating Area, Material = Gold (15)
- Contact Base Material = Phosphor Bronze

Housing Features:

- Centerline (mm [in]) = 2.54 [0.100]
- Housing Color = Black
- Housing Material = Polyester GF
- UL Flammability Rating = UL 94V-0

Configuration Features:

- Number of Positions = 2

Industry Standards:

- RoHS/ELV Compliance = RoHS compliant, ELV compliant
- Lead Free Solder Processes = Not relevant for lead free process
- RoHS/ELV Compliance History = Always was RoHS compliant
- UL Rating = Recognized
- CSA Certified = Yes

Conditions for Usage:

- Temperature Range (°C) = -65 - +105

Packaging Features:

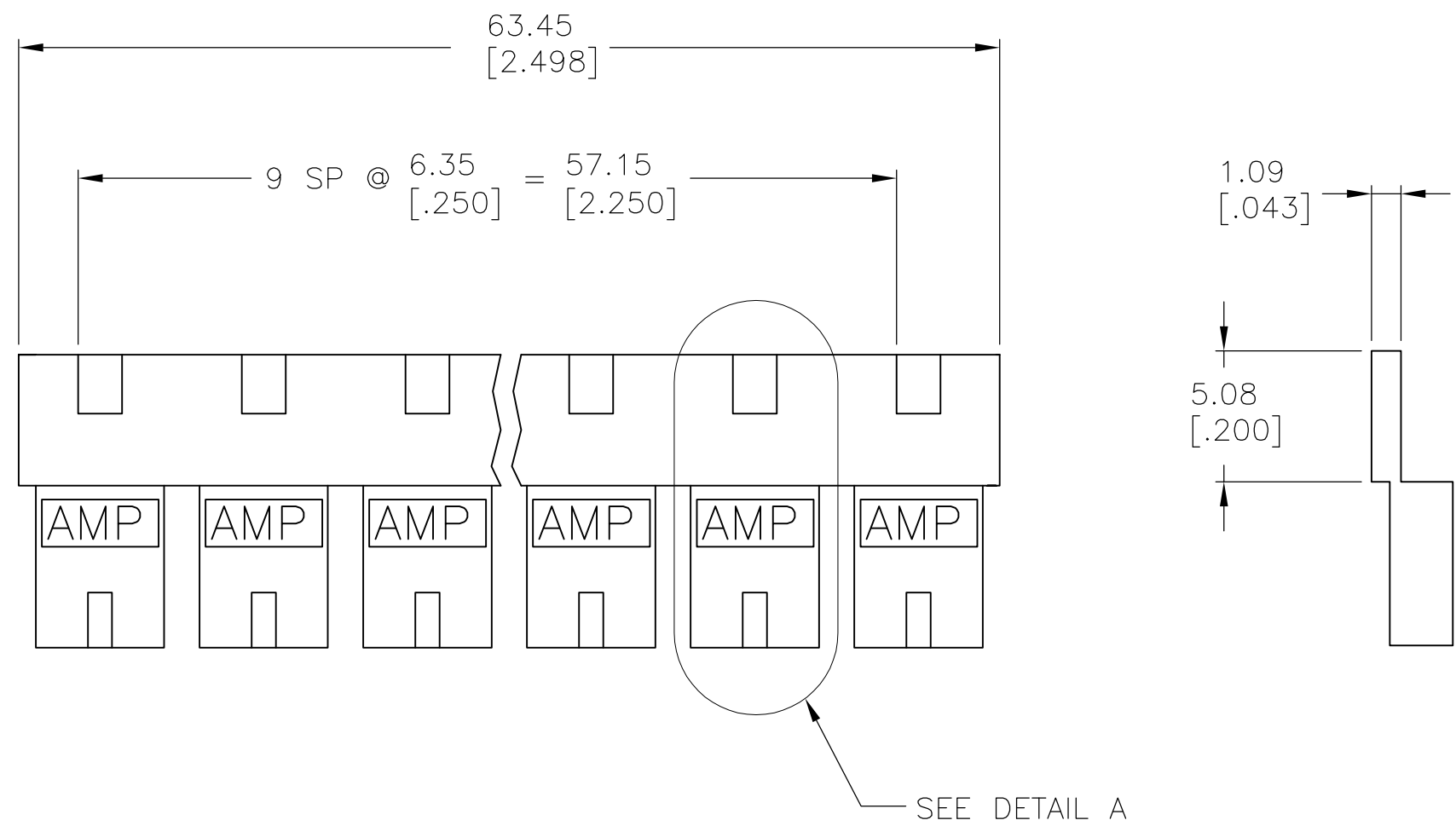
- Packaging Method = Stick of 10

Other:

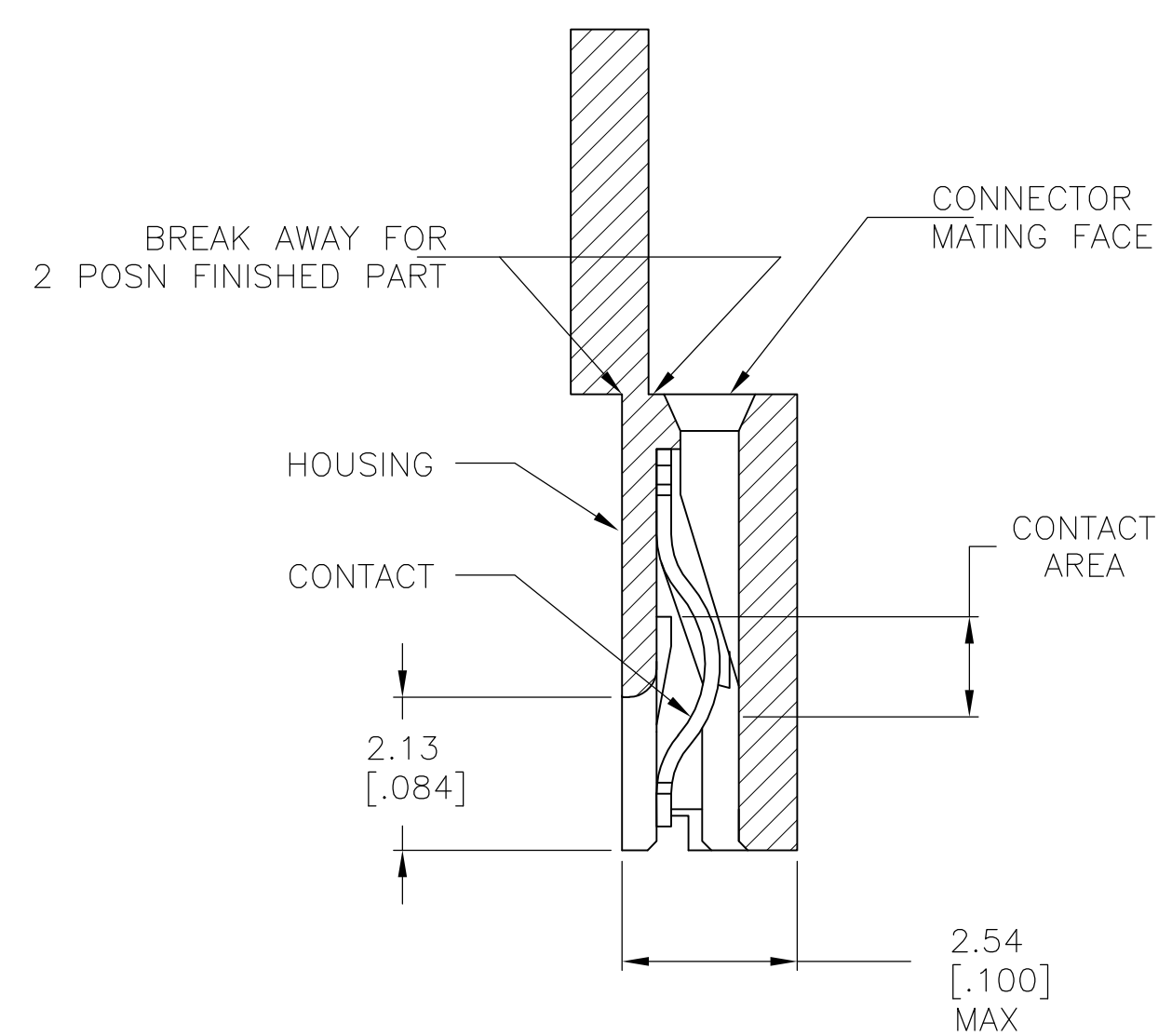
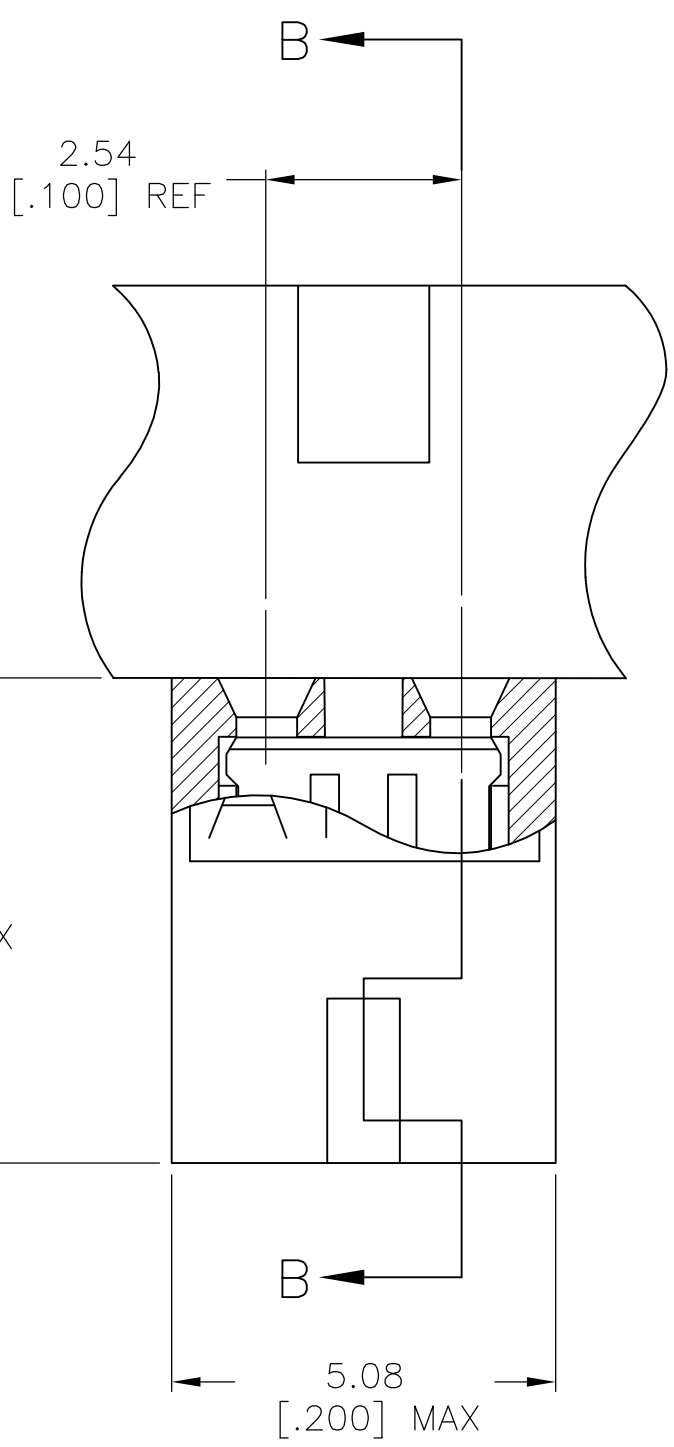
- Brand = AMP

THIS DRAWING IS UNPUBLISHED. RELEASED FOR PUBLICATION
 © COPYRIGHT - By - ALL RIGHTS RESERVED.

LOC		DIST		REVISIONS			
P	LTR	DESCRIPTION		DATE	DWN	APVD	
AG	53	K2		REVISED PER ECO-11-018720	14SEP11	KBH MM	



- 1 MATERIAL:
HOUSING: GLASS-FILLED POLYESTER, COLOR-SEE TABLE.
- 2 CONTACT PLATED WITH 0.00254 [.000100] TIN-LEAD OVER ALL.
- 3 CONTACT PLATED WITH 0.00038 [.000015] GOLD IN CONTACT AREA OVER 0.00127 [.000050] NICKEL OVER ALL.
- 4 PART NO. DENOTES INDIVIDUAL TWO POSITION SHUNT, WHICH IS PACKAGED ON BREAKAWAY COMBS OF TEN SHUNTS.
- 5 CONNECTOR MATES WITH WIRE WRAP POSTS, 0.64 [.025] SQUARE OR ROUND AND 0.56 [.022] X 0.66 [.026] POSTS. LENGTH 5.08 [.200] MINIMUM.
- 6 CONTACT PLATED WITH 0.00013 [.000005] GOLD IN CONTACT AREA OVER 0.00127 [.000050] NICKEL OVER ALL.
- 7 PART NO. DENOTES INDIVIDUAL TWO POSITION SHUNT WHICH IS PACKAGED LOOSE PIECE.
- 8 CONTACT PLATED WITH 0.00076 [.000030] GOLD IN CONTACT AREA OVER 0.00127 [.000050] NICKEL OVERALL.
- 9 CONTACT PLATED WITH 0.00254 [.000100] MATTE TIN OVER ALL.



SECTION B-B
 SCALE 10:1

DETAIL A
 SCALE 10:1

MATERIAL	CONTACT MATERIAL	HOUSING COLOR	FINISH	PART NO
PHOSPHOR BRONZE	BLACK	9	2-382811-1	4
	BLACK	8	2-382811-0	4
	BLACK	6	1-382811-8	7
OBSOLETE	BLACK	3	1-382811-6	7
	BLACK	3	1-382811-0	4
	PHOSPHOR BRONZE	RED	3	382811-9
SUPERSEDED BY 382811-2	BLACK	6	382811-8	4
	BLACK	3	382811-6	4
	PHOSPHOR BRONZE	BLACK	2	382811-5
OBSOLETE	BLUE	6	382811-4	4
	BLUE	3	382811-2	4
	BLUE	2	382811-1	4

THIS DRAWING IS A CONTROLLED DOCUMENT.

DIMENSIONS: mm [INCHES]	TOLERANCES UNLESS OTHERWISE SPECIFIED: 0 PLC ± - 1 PLC ± - 2 PLC ± 0.26 [.010] 3 PLC ± - 4 PLC ± - ANGLES ± -	DWN W. SORAH 8-18-93 CHK R. TALLEY 8-23-93 APVD D. HUFFMAN 8-23-93	TE Connectivity
MATERIAL HOUSING CONTACT: SEE TABLE	FINISH SEE TABLE	PRODUCT SPEC 108-1476 APPLICATION SPEC 114-1059	ECONOMY SHUNT ASSEMBLY
CUSTOMER DRAWING		WEIGHT -	SIZE A2 CAGE CODE 00779 DRAWING NO C-382811 RESTRICTED TO -
		SCALE 4:1	SHEET 1 OF 1 REV K2