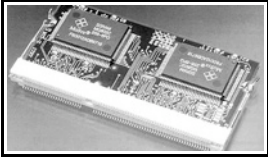


390112-1 Product Details

[Share](#) [Print](#) [Email](#)



390112-1

TE Internal Number: 390112-1

Active

[View 3D PDF](#)

Memory Sockets

- [Converted to EU RoHS/ELV Compliant](#)
(Statement of Compliance)

Product Highlights:

- Socket Type = Memory Card
- Socket Style = SO DIMM
- Gold Contact Plating, Mating Area, Material
- 144 Positions
- DRAM Type = Small Outline (SO)

[View all Features](#)

Quick Links

- [▶ Pricing & Availability](#)
- [▶ Search for Tooling](#)
- [▶ Product Feature Selector](#)
- [▶ Contact Us About This Product](#)

[Add to My Part List](#) [Request Sample](#) [Find Similar Products](#)

[Buy Product](#)

Documentation & Additional Information	
<p>Product Drawings:</p> <ul style="list-style-type: none"> • S.O. DIMM SKT Assy, 0.8mm 3.3 V, 144 P High Pro. for... (PDF, English) <p>Catalog Pages/Data Sheets:</p> <ul style="list-style-type: none"> • None Available <p>Product Specifications:</p> <ul style="list-style-type: none"> • Socket, 144 Position Surface Mount 8 Byte SO DIMM (PDF, English) <p>Application Specifications:</p> <ul style="list-style-type: none"> • SO (Small Outline) DIMM (Dual-In Memory Module) Sock... (PDF, English) <p>Instruction Sheets:</p> <ul style="list-style-type: none"> • None Available <p>CAD Files: (CAD Format & Compression Information)</p> <ul style="list-style-type: none"> • 2D Drawing (DXF, Version P) • 3D Model (IGES, Version P) • 3D Model (STEP, Version P) 	<p>Additional Information:</p> <ul style="list-style-type: none"> • Product Line Information <p>Related Products:</p> <ul style="list-style-type: none"> • Tooling

[List all Documents](#)

Product Features (Please use the Product Drawing for all design activity)	
<p>Product Type Features:</p> <ul style="list-style-type: none"> • DRAM Type = Small Outline (SO) • PCB Mount Style = Surface Mount • Module Orientation = Right Angle • Profile = High <p>Electrical Characteristics:</p> <ul style="list-style-type: none"> • DRAM Voltage = 3.3 V <p>Termination Features:</p> <ul style="list-style-type: none"> • Insertion Style = Cam-In <p>Body Features:</p> <ul style="list-style-type: none"> • Ejector Location = None • Latch Material = Stainless Steel • Latch Plating = Tin 	<p>Housing Features:</p> <ul style="list-style-type: none"> • Centerline (mm [in]) = 0.80 [0.031] • Housing Material = High Temperature Plastic • Housing Color = Natural <p>Configuration Features:</p> <ul style="list-style-type: none"> • Number of Positions = 144 • Number of Rows = Dual • Center Key (mm [in]) = 4.80 [.189] Offset Left • Number of Keys = 1 <p>Industry Standards:</p> <ul style="list-style-type: none"> • RoHS/ELV Compliance = RoHS compliant, ELV compliant • Lead Free Solder Processes = Reflow solder capable to 245°C, Reflow solder capable to 260°C

- Mount Type = Printed Circuit Board
- Module Key Type = SDRAM

Contact Features:

- Socket Type = Memory Card
- [Socket Style](#) = SO DIMM
- Contact Plating, Mating Area, Material = Gold
- Contact Base Material = Copper Alloy
- Solder Tail Contact Plating = Gold Flash

- RoHS/ELV Compliance History = Converted to comply with RoHS directive
- UL Flammability Rating = UL 94V-0

Packaging Features:

- Packaging Method = Soft Tray
- Packaging Quantity = 20

Other:

- Brand = AMP

Corporate Information

- [About TE](#)
- [Investors](#)
- [News Room](#)
- [Supplier Portal](#)
- [Careers](#)
- [Terms & Conditions](#)
- [Privacy Policy](#)
- [AODA Accessibility Policy](#)
- [AODA Multi-Year Accessibility Plan](#)

Quick Links

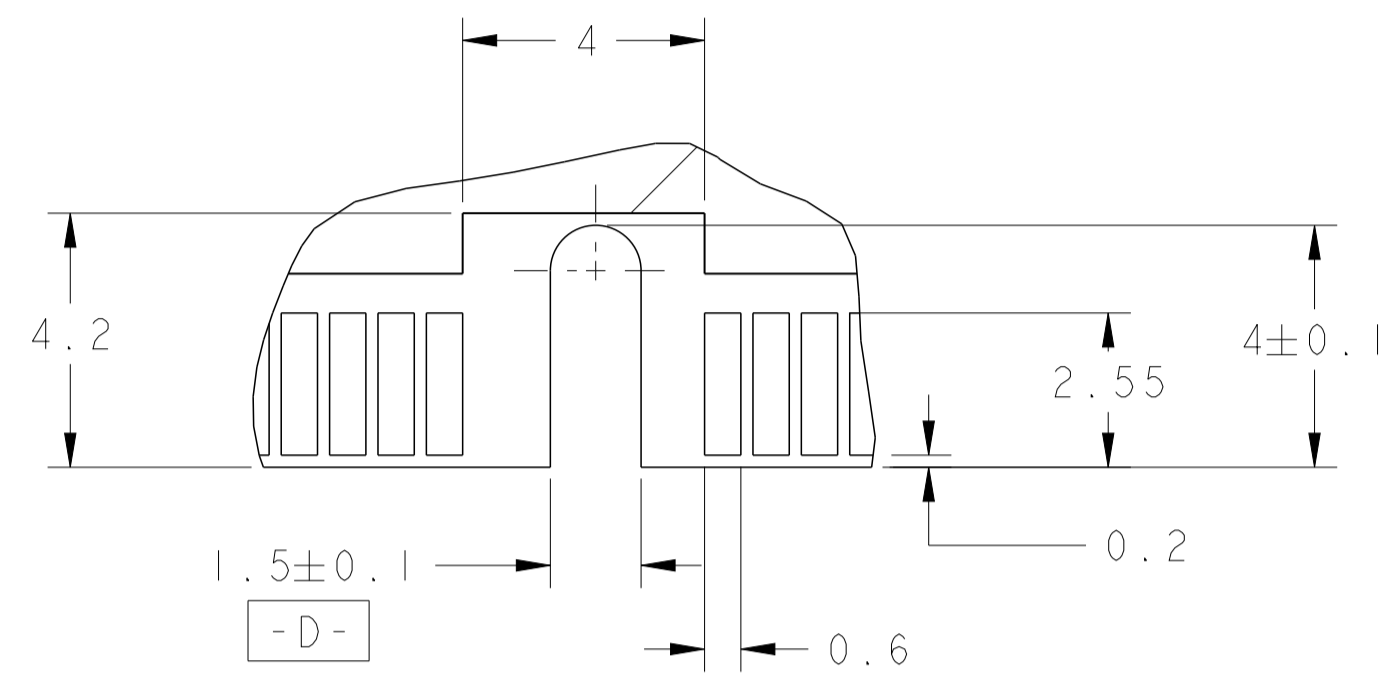
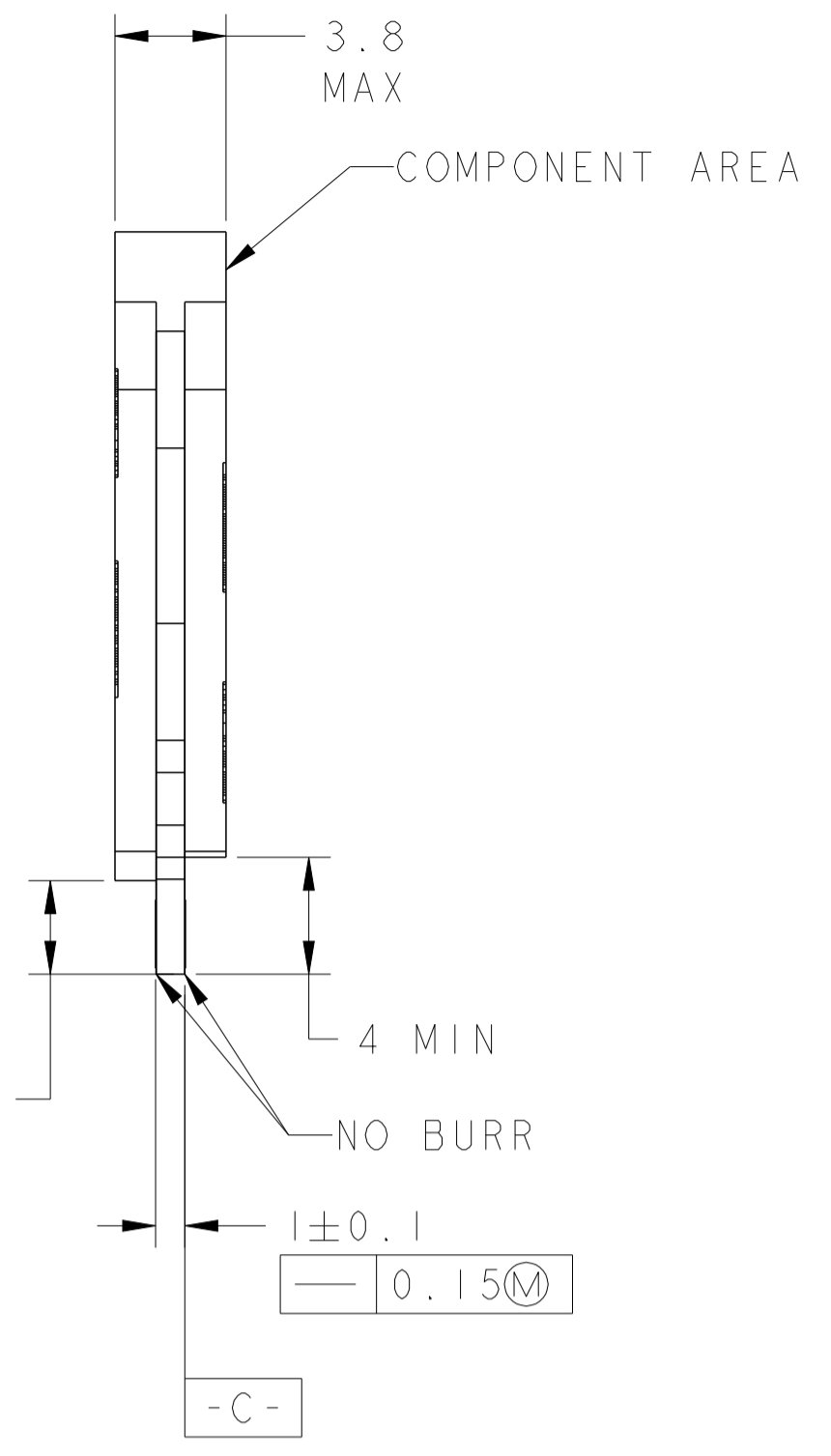
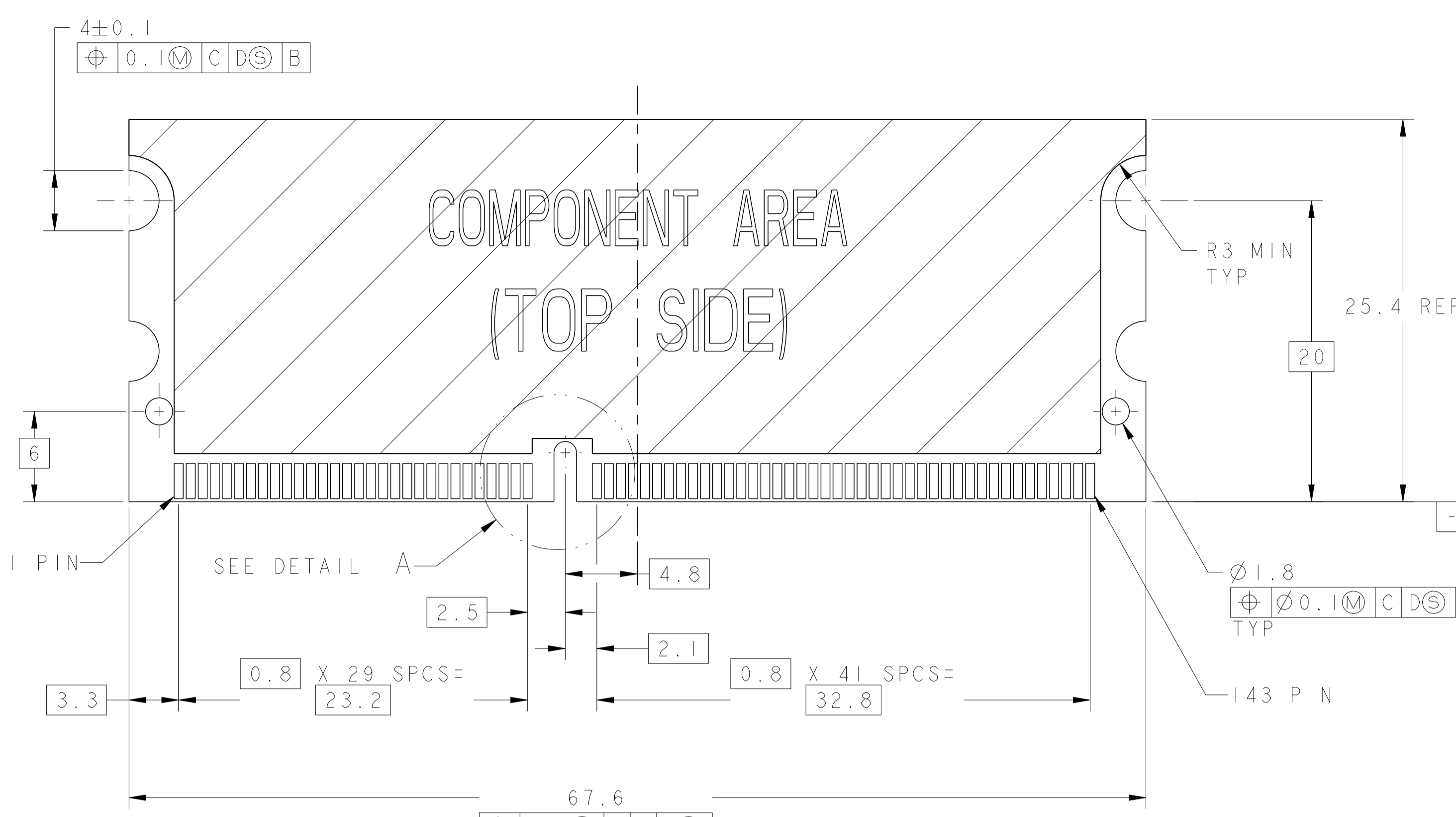
- [Distributor Inventory](#)
- [Product Cross Reference](#)
- [Documents & Drawings](#)
- [Product Compliance Support Center](#)
- [Site Map](#)

Customer Support

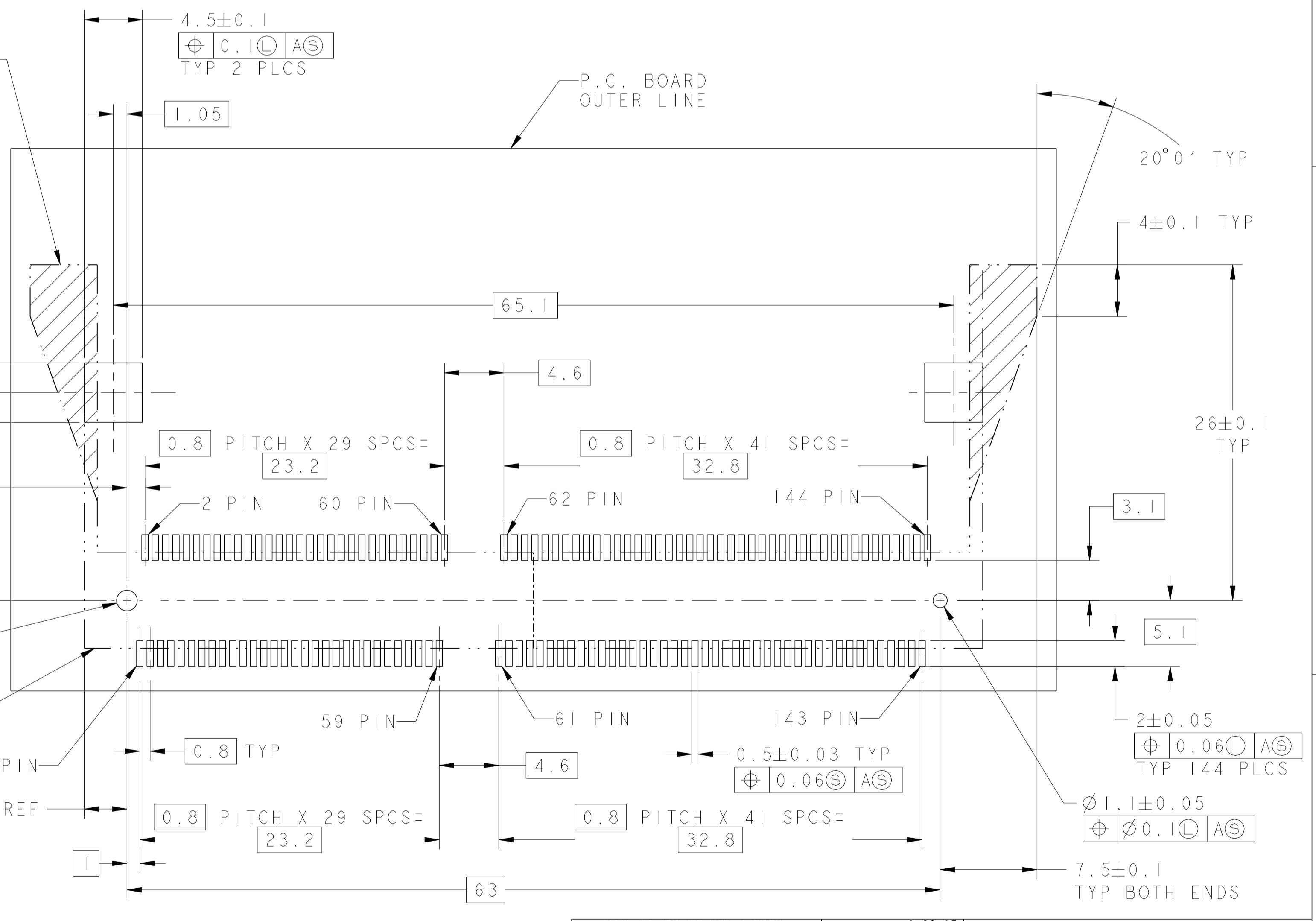
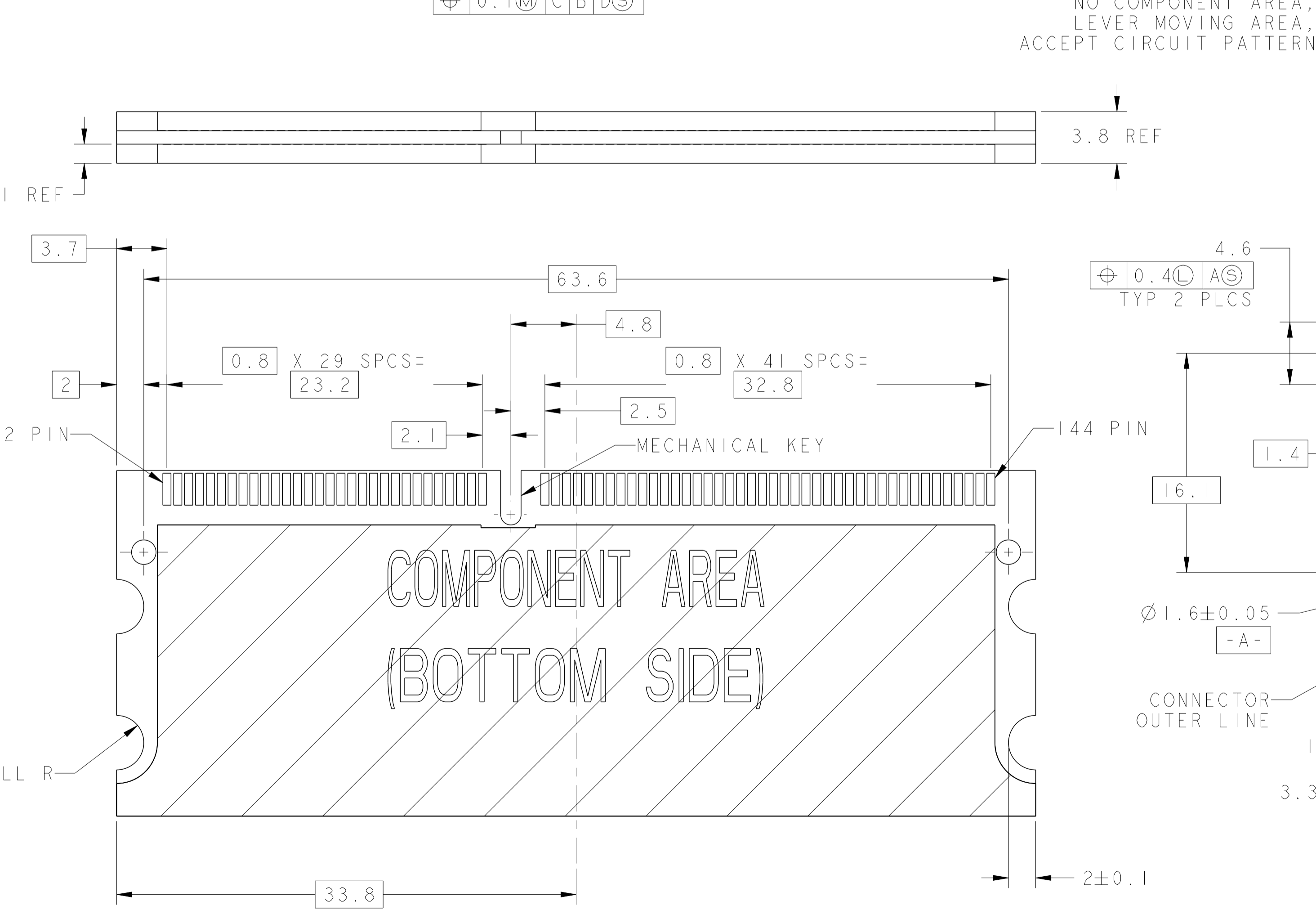
- [Email or Chat With Us](#)
- [Find a Phone Number](#)
- [Knowledge Base](#)
- [Manage Your Account](#)

Keep Me Informed





DETAIL A
SCALE 8:1
(SDRAM 3.3V)



RECOMMENDED P.C. BOARD PATTERN LAYOUT (CONNECTOR MOUNTING SIDE)

DIMENSIONS: mm		TOLERANCES UNLESS OTHERWISE SPECIFIED:		DRAWN: W. SORAH 6-23-97		CHK: ALAN ANG 1-21-02		APPROVED: SE LEONG		NAME: S.O. DIMM SOCKET ASSY, 0.8mm, 3.3V, 144 POSITION, HIGH PROFILE FOR SDRAM TYPE MODULE	
0 PLC	±0.2	1 PLC	±0.2	2 PLC	±0.2	3 PLC	±0.2	4 PLC	±0.2	ANGLES	°
MATERIAL: SEE TABLE		FINISH: SEE TABLE		WEIGHT: -		CAGE CODE: 114-1114		DRAWING NO: 00779		RESTRICTED TO: -	
CUSTOMER DRAWING				SCALE: 4:1		SHEET: 2 OF 2		REV: R1		DATE: -	