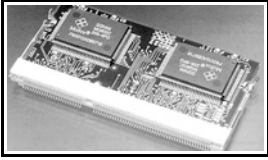


### 390113-1 Product Details

[Share](#) [Print](#) [Email](#)



**390113-1**

TE Internal Number: 390113-1

Active

[View 3D PDF](#)

#### Memory Sockets

- Always EU RoHS/ELV Compliant  
(Statement of Compliance)

#### Product Highlights:

- Socket Type = Memory Card
- Socket Style = SO DIMM
- Gold Contact Plating, Mating Area, Material
- 144 Positions
- DRAM Type = Small Outline (SO)

[View all Features](#)

#### Quick Links

- ▶ [Pricing & Availability](#)
- ▶ [Search for Tooling](#)
- ▶ [Product Feature Selector](#)
- ▶ [Contact Us About This Product](#)

[Add to My Part List](#) [Request Sample](#) [Find Similar Products](#)

[Buy Product](#)

| Documentation & Additional Information  |  |
|---|--|
| <p><b>Product Drawings:</b></p> <ul style="list-style-type: none"> <li>• <a href="#">S.O.DIMM SKT,0.8mm PITCH,3.3V, 144 P STD Pro. for SD...</a> (PDF, English)</li> </ul> <p><b>Catalog Pages/Data Sheets:</b></p> <ul style="list-style-type: none"> <li>• None Available</li> </ul> <p><b>Product Specifications:</b></p> <ul style="list-style-type: none"> <li>• None Available</li> </ul> <p><b>Application Specifications:</b></p> <ul style="list-style-type: none"> <li>• <a href="#">SO (Small Outline) DIMM (Dual-In Memory Module) Sock...</a> (PDF, English)</li> </ul> <p><b>Instruction Sheets:</b></p> <ul style="list-style-type: none"> <li>• None Available</li> </ul> <p><b>CAD Files:</b> (CAD Format &amp; Compression Information)</p> <ul style="list-style-type: none"> <li>• <a href="#">2D Drawing</a> (DXF, Version H)</li> <li>• <a href="#">3D Model</a> (IGES, Version H)</li> <li>• <a href="#">3D Model</a> (STEP, Version H)</li> </ul> | <p><b>Additional Information:</b></p> <ul style="list-style-type: none"> <li>• <a href="#">Product Line Information</a></li> </ul> <p><b>Related Products:</b></p> <ul style="list-style-type: none"> <li>• <a href="#">Tooling</a></li> </ul> |

[List all Documents](#)

| Product Features (Please use the Product Drawing for all design activity)  |   |
|--|---|
| <p><b>Product Type Features:</b></p> <ul style="list-style-type: none"> <li>• <a href="#">DRAM Type</a> = Small Outline (SO)</li> <li>• <a href="#">PCB Mount Style</a> = Surface Mount</li> <li>• <a href="#">Module Orientation</a> = Right Angle</li> <li>• <a href="#">Profile</a> = Standard</li> </ul> <p><b>Electrical Characteristics:</b></p> <ul style="list-style-type: none"> <li>• <a href="#">DRAM Voltage</a> = 3.3 V</li> </ul> <p><b>Termination Features:</b></p> <ul style="list-style-type: none"> <li>• <a href="#">Insertion Style</a> = Cam-In</li> </ul> <p><b>Body Features:</b></p> <ul style="list-style-type: none"> <li>• <a href="#">Ejector Location</a> = None</li> <li>• <a href="#">Latch Material</a> = Stainless Steel</li> <li>• <a href="#">Latch Plating</a> = Tin</li> </ul> | <p><b>Housing Features:</b></p> <ul style="list-style-type: none"> <li>• <a href="#">Centerline (mm [in])</a> = 0.80 [0.031]</li> <li>• <a href="#">Housing Material</a> = High Temperature Plastic</li> <li>• <a href="#">Housing Color</a> = Natural</li> </ul> <p><b>Configuration Features:</b></p> <ul style="list-style-type: none"> <li>• <a href="#">Number of Positions</a> = 144</li> <li>• <a href="#">Number of Rows</a> = Dual</li> <li>• <a href="#">Center Key (mm [in])</a> = 4.80 [.189] Offset Left</li> <li>• <a href="#">Number of Keys</a> = 1</li> </ul> <p><b>Industry Standards:</b></p> <ul style="list-style-type: none"> <li>• <a href="#">RoHS/ELV Compliance</a> = RoHS compliant, ELV compliant</li> <li>• <a href="#">Lead Free Solder Processes</a> = Reflow solder capable to 245°C, Reflow solder capable to 260°C</li> </ul> |

- Mount Type = Printed Circuit Board
- Module Key Type = SDRAM

**Contact Features:**

- Socket Type = Memory Card
- [Socket Style](#) = SO DIMM
- Contact Plating, Mating Area, Material = Gold
- Contact Base Material = Copper Alloy
- Solder Tail Contact Plating = Gold Flash

- RoHS/ELV Compliance History = Always was RoHS compliant
- UL Flammability Rating = UL 94V-0

**Packaging Features:**

- Packaging Method = Soft Tray
- Packaging Quantity = 20

**Other:**

- Brand = AMP

**Corporate Information**

- [About TE](#)
- [Investors](#)
- [News Room](#)
- [Supplier Portal](#)
- [Careers](#)
- [Terms & Conditions](#)
- [Privacy Policy](#)
- [AODA Accessibility Policy](#)
- [AODA Multi-Year Accessibility Plan](#)

**Quick Links**

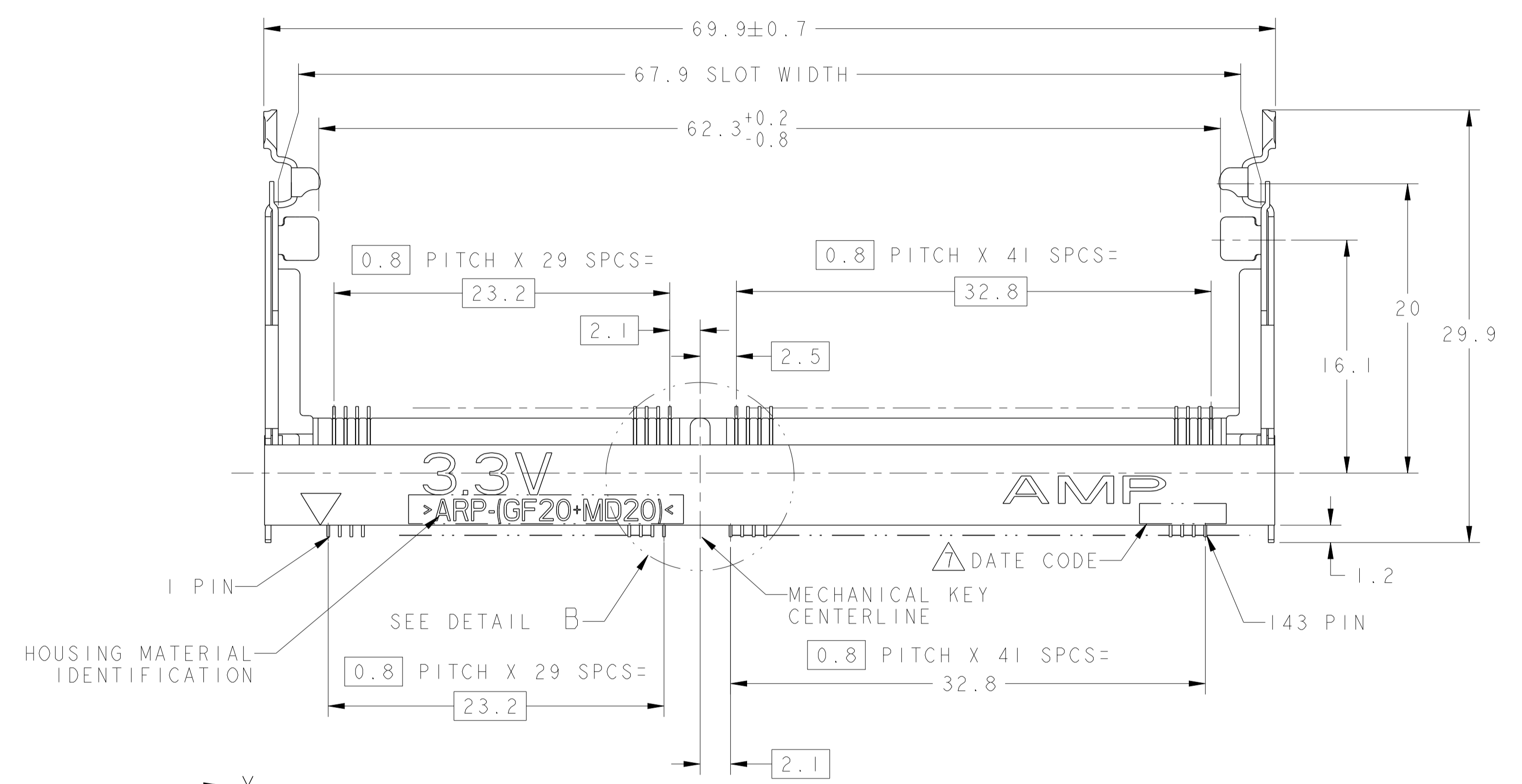
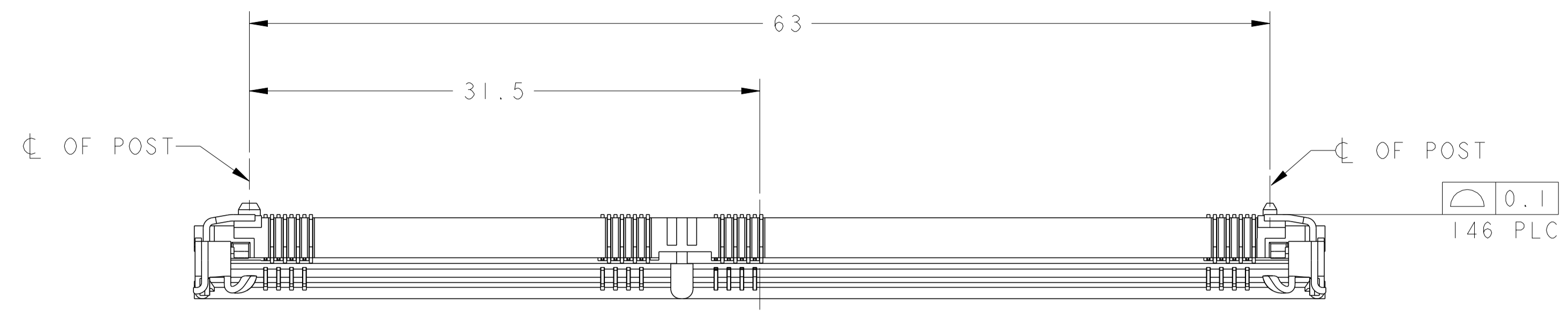
- [Distributor Inventory](#)
- [Product Cross Reference](#)
- [Documents & Drawings](#)
- [Product Compliance Support Center](#)
- [Site Map](#)

**Customer Support**

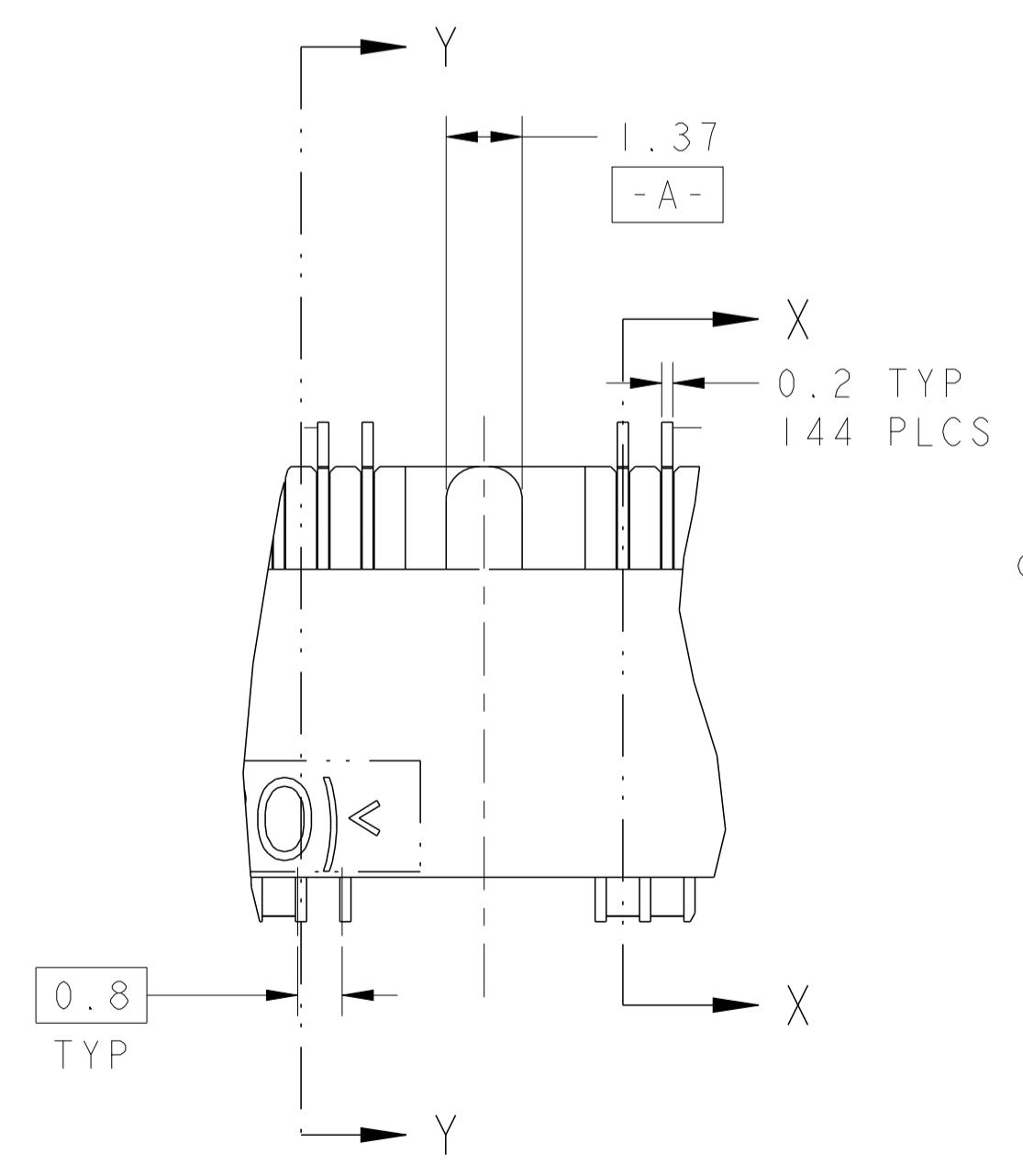
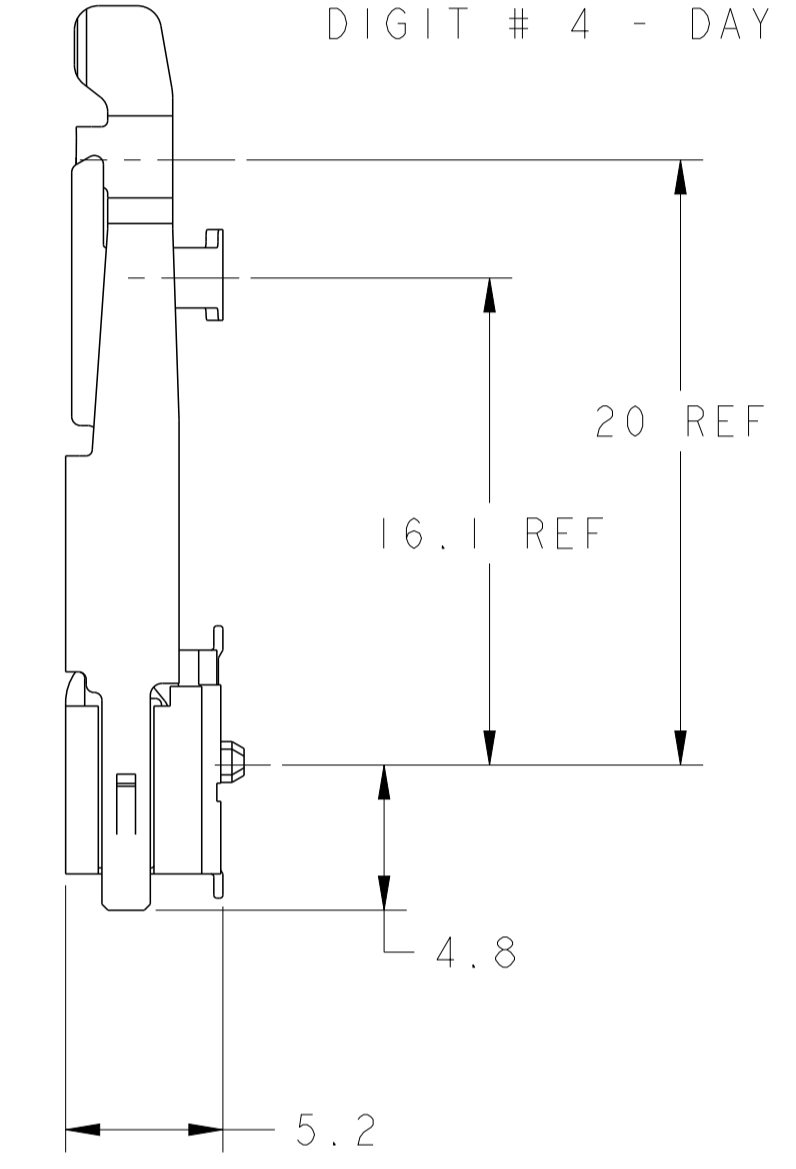
- [Email or Chat With Us](#)
- [Find a Phone Number](#)
- [Knowledge Base](#)
- [Manage Your Account](#)

**Keep Me Informed**

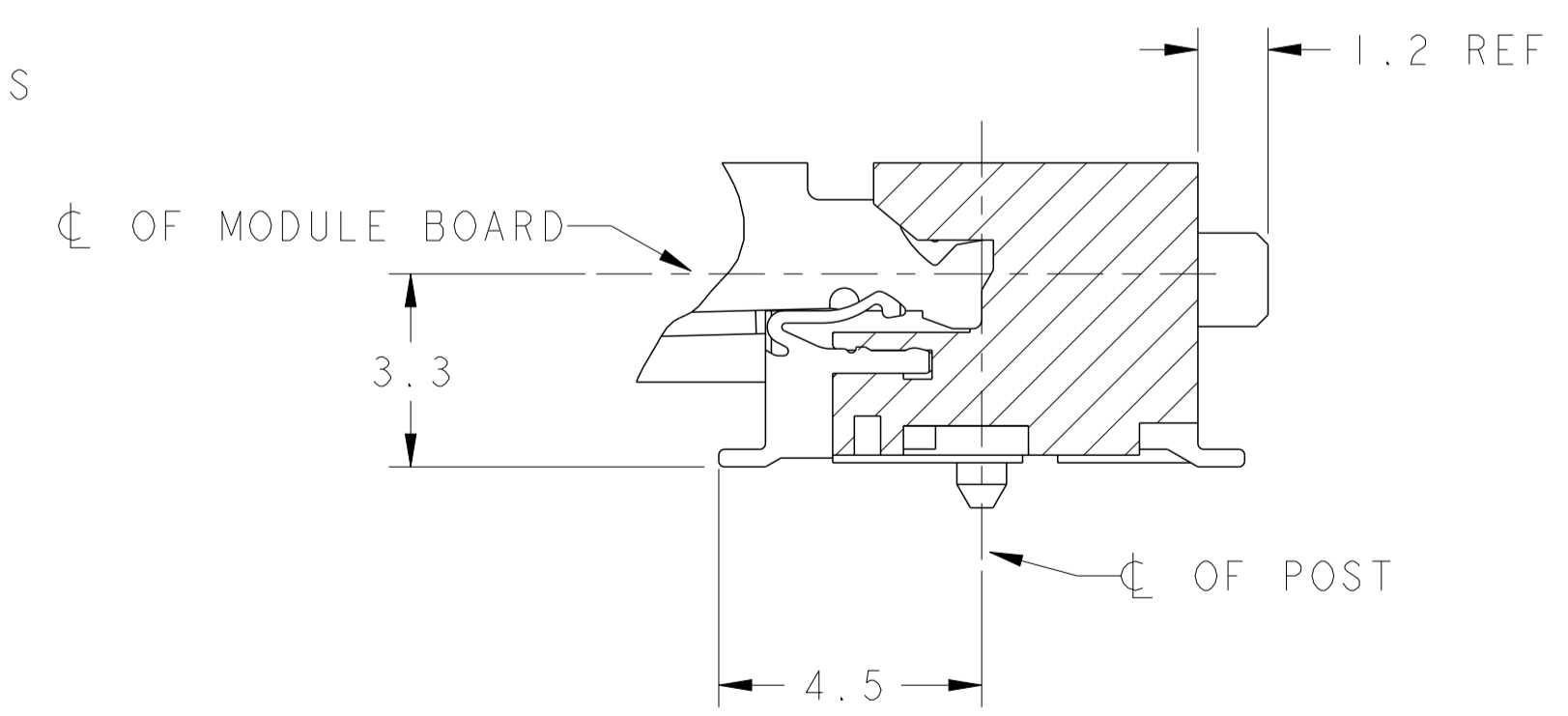




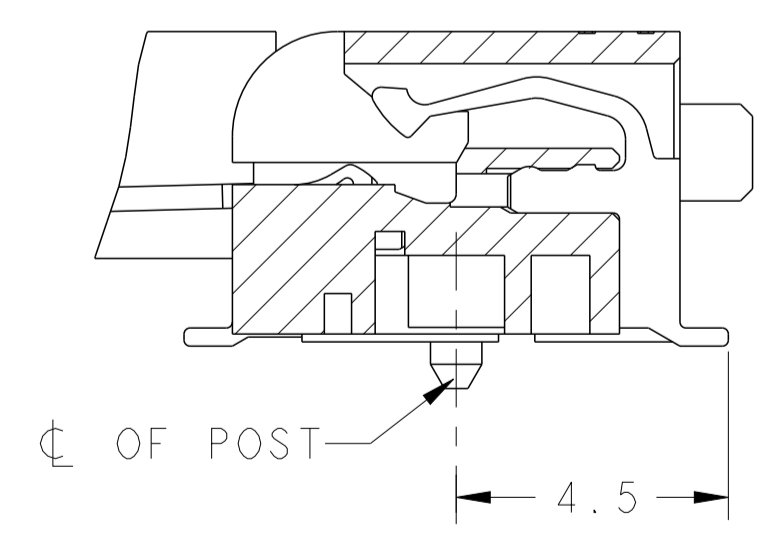
- 1 MATERIAL:  
HOUSING: HIGH TEMPERATURE PLASTIC, UL94V-0, NAT.  
CONTACT: COPPER ALLOY  
LATCH: SUS301 STAINLESS STEEL PLATING.
- 2 FINISH; CONTACT AREA: 0.00025 MIN GOLD PLATE ON 0.001 MIN ALL OVER NICKEL  
SOLDERING AREA: 0.00005 MIN TO 0.00030 MAX GOLD PLATE.
- 3. TOLERANCES NON-ACCUMULATIVE.
- 4 PACKAGED 12 PIECES PER HARD TRAY.
- 5 FINISH; CONTACT AREA: 0.00025 MIN GOLD PLATE ON 0.001 MIN ALL OVER NICKEL  
SOLDERING AREA: BRIGHT TIN LEAD PLATE.
- 6 PART PACKAGED PER EIA-1875 STANDARD. REEL DIAMETER SHALL BE 330mm. TAPE WIDTH SHALL BE 88mm AND TAPE PITCH SHALL BE 36mm.
- 7 DATE CODE (4-DIGITS), LOCATED AS SHOWN. TO BE INTERPRETED AS FOLLOWS:  
DIGIT # 1 - LAST DIGIT OF YEAR.  
DIGITS # 2 AND # 3 - CALENDAR WEEK.  
DIGIT # 4 - DAY OF THE WEEK (WITH SUNDAYS AS DAY 1).



DETAIL B  
SCALE 8:1



SECTION X-X  
ROTATED 90° CCW  
SCALE 8:1



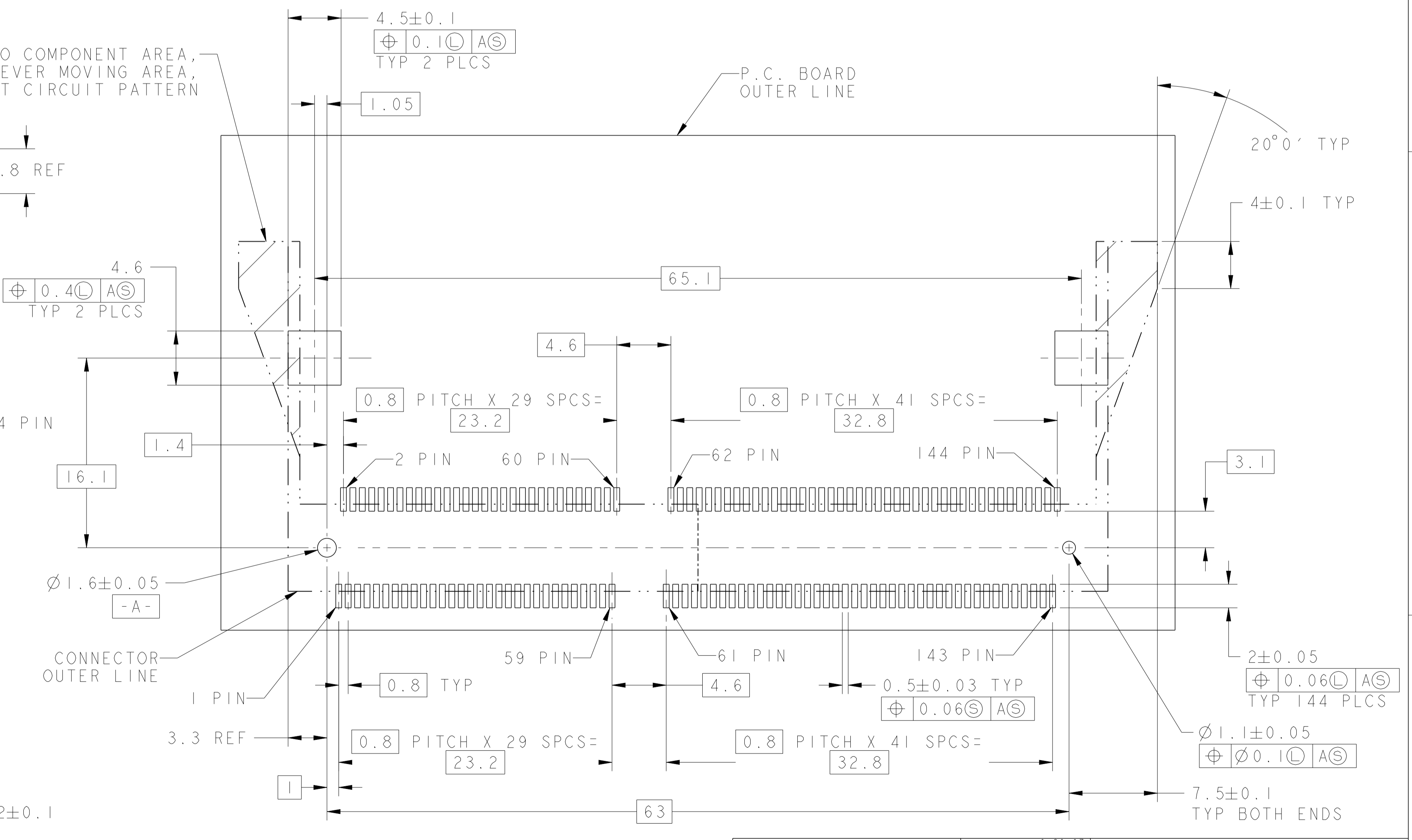
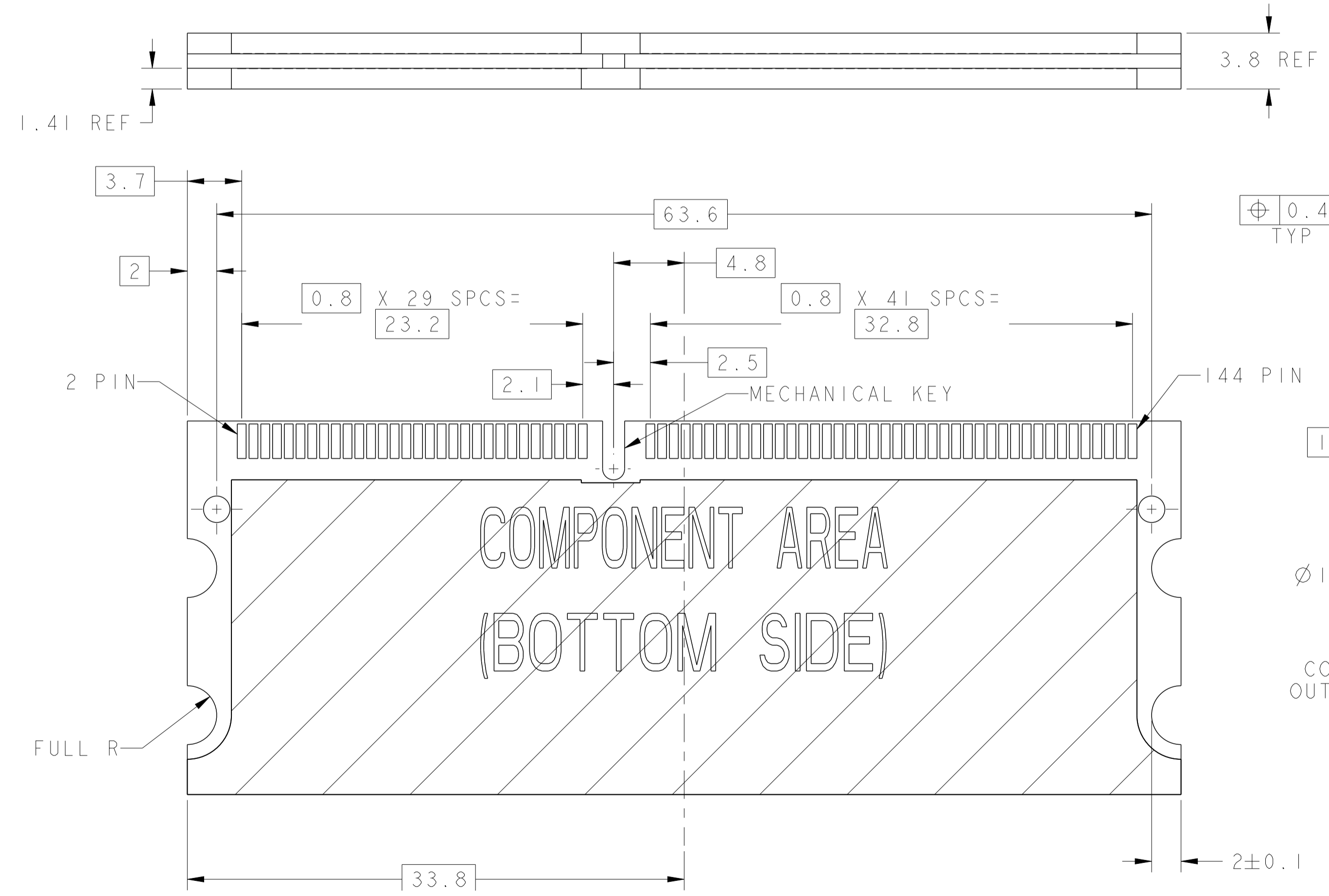
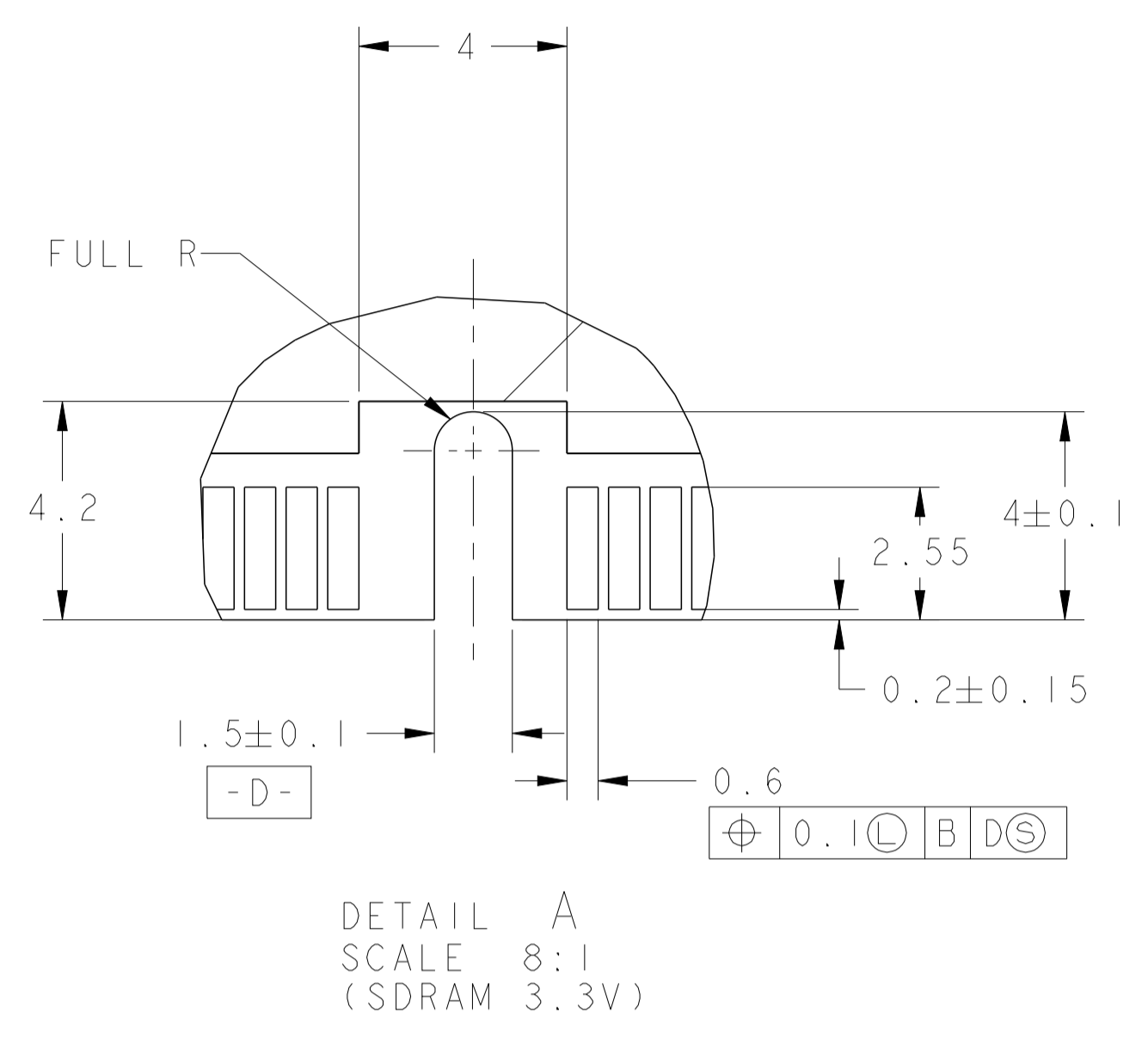
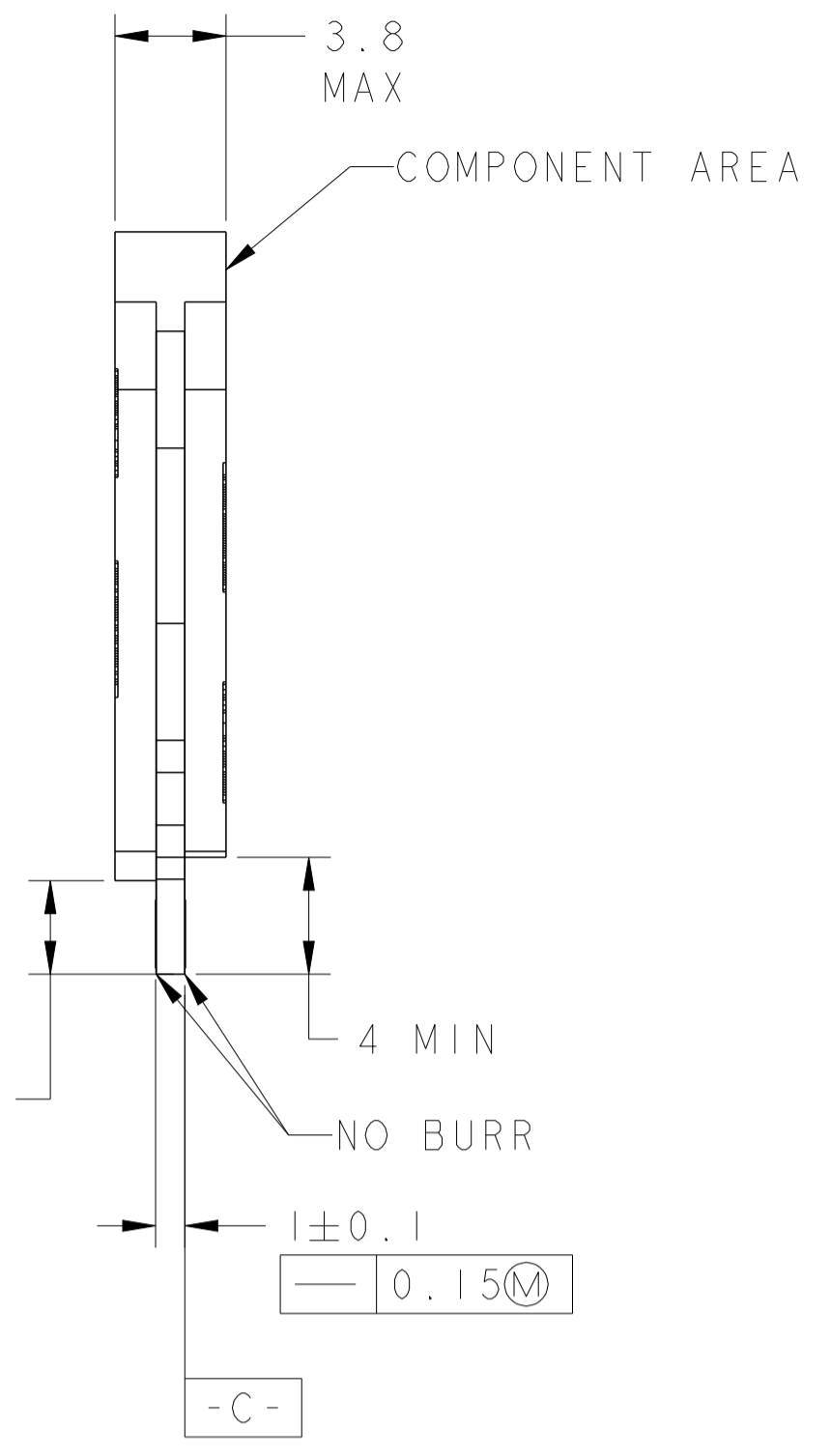
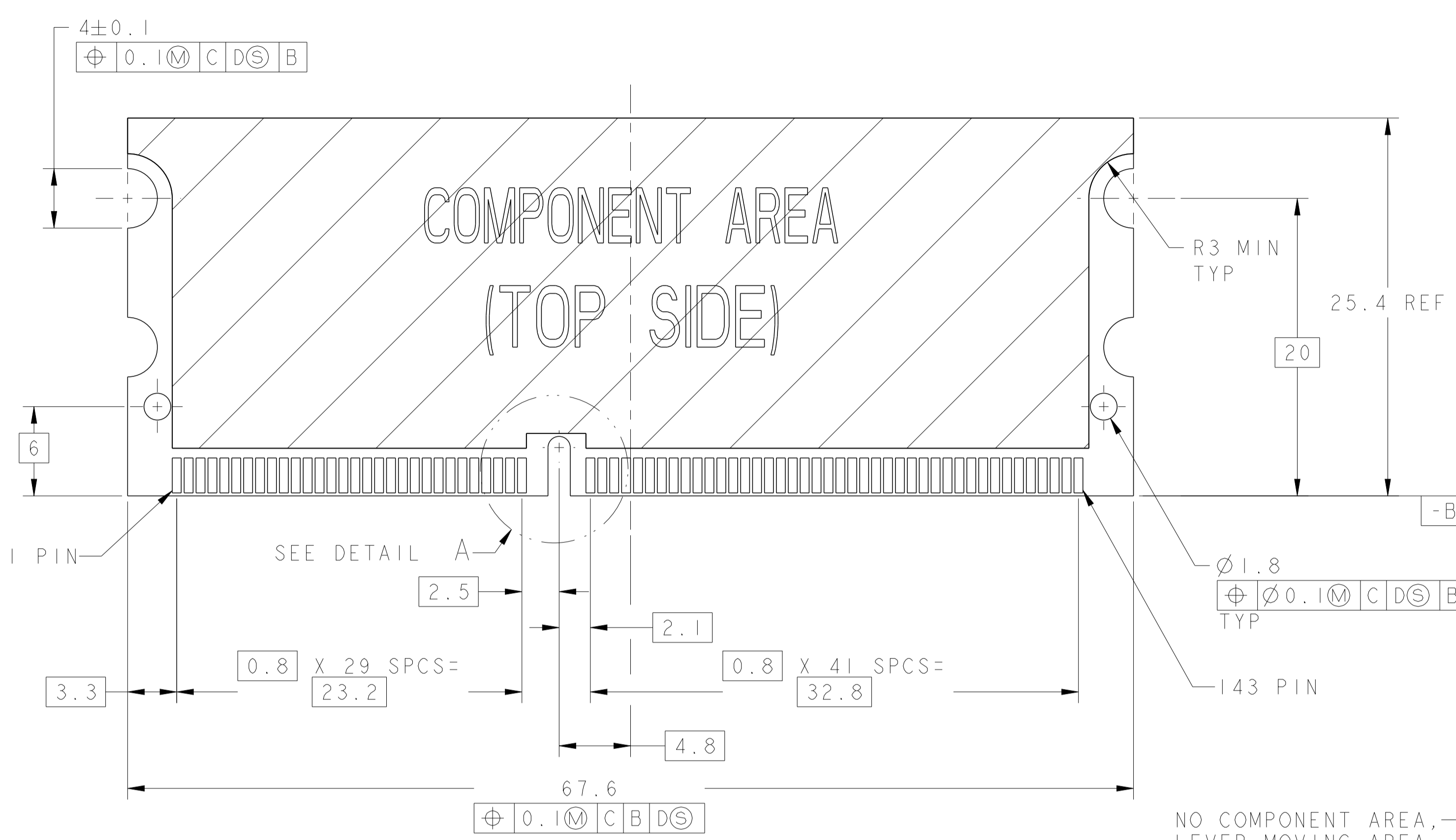
SECTION Y-Y  
ROTATED 90° CCW  
SCALE 8:1

|               |               |        |              |     |             |   |
|---------------|---------------|--------|--------------|-----|-------------|---|
| NIL           | AVAILABLE     | 2      | DRAM 3.3V    | 144 | 6-390113-1  | 6 |
| 3-390113-1    | NOT AVAILABLE | 5      | DRAM 3.3V    | 144 | 3-390113-4  | 4 |
| NIL           | AVAILABLE     | 2      | DRAM 3.3V    | 144 | 3-390113-1  | 4 |
| 390113-1      | NOT AVAILABLE | 5      | DRAM 3.3V    | 144 | 390113-4    |   |
| NIL           | AVAILABLE     | 2      | DRAM 3.3V    | 144 | 390113-1    |   |
| SUPERSEDED BY | REMARKS       | FINISH | POWER SUPPLY | POS | PART NUMBER |   |

|                |  |  |  |   |  |                        |  |  |  |
|----------------|--|--|--|---|--|------------------------|--|--|--|
| DIMENSIONS: mm |  | TOLERANCES UNLESS OTHERWISE SPECIFIED: |  | DWG: W. SORAH 6-20-97<br>CHK: R. TALLEY 6-20-97 |  | APPROVED: SE LEONG     |  | NAME: S.O. DIMM SOCKET, 0.8mm PITCH, 3.3V, 144 POSITION, STD PROFILE FOR SDRAM TYPE MODULE |  |
| MATERIAL       |  | FINISH                                 |  | APPROVAL: SEE TABLE                             |  | PRODUCT SPEC: 108-1739 |  | APPLICATION SPEC: 114-1114   |  |
| SCALE: 4:1     |  | SHEET: 1 OF 2                          |  | REV: M1   |  | CAGE CODE: 00779       |  | DRAWING NO: 390113   |  |



STE Connectivity  
S.O. DIMM SOCKET, 0.8mm PITCH, 3.3V, 144 POSITION, STD PROFILE FOR SDRAM TYPE MODULE



RECOMMENDED P.C. BOARD PATTERN LAYOUT (CONNECTOR MOUNTING SIDE)

|             |        |  |      |                         |  |                            |             |
|-------------|--------|--|------|-------------------------|--|----------------------------|-------------|
| DIMENSIONS: |        | TOLERANCES UNLESS OTHERWISE SPECIFIED: |      | DRAWN: W. SORAH 6-20-97 |  | CHECKED: R. TALLEY 6-20-97 |             |
| mm          |        | 0 PLC                                  | ±0.2 | NAME                    | S.O. DIMM SOCKET, 0.8mm PITCH, 3.3V, 144 POSITION, STD PROFILE FOR SDRAM TYPE MODULE |                            |             |
|             |        | 1 PLC                                  | ±0.2 | APPROVED: SE LEONG      | SIZE   | CAGE CODE                  | DRAWING NO. |
|             |        | 2 PLC                                  | ±0.2 | PRODUCT SPEC            | A1   | 00779                      | 390113      |
|             |        | 3 PLC                                  | ±0.2 | APPLICATION SPEC        | SCALE 4:1 SHEET 2 OF 2 REV M1  |                            |             |
|             |        | 4 PLC                                  | ±0.2 | ANGLES                  | CUSTOMER DRAWING   |                            |             |
| MATERIAL    | FINISH | SEE TABLE                              |      |                         |  |                            |             |