

EEA, EEB Series

Cost Effective
Compact RFI Filter
IEC Connector Package



UL Recognized
CSA Certified
VDE Approved
SEV Approved*
SEMKO Approved*

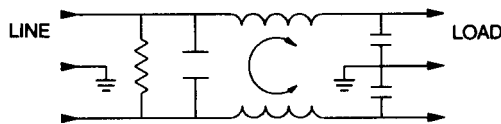
EEA Series

This is a new generation of compact RFI filters with IEC socket. A totally new design in both the internal structure and manufacturing process makes this series cost effective and compact. The EEA series supersedes the EF series by providing superior performance, particularly in the common mode at low frequencies. Mechanically, its slimmer size makes it compatible with all similar filters on the market.

EEB Series

This is a new generation of compact RFI filters with IEC socket. A totally new design in both the internal structure and manufacturing process makes this series cost effective and compact. Electrically, the EEB provides enhanced differential mode performance compared to both the EEA and EF series. Mechanically, its slimmer size makes it compatible with all similar filters on the market.

Electrical Schematic



Resistor location for reference only.

EEA2/EEB2

EEAP/EEBP

EEA1/EEB1

Specifications

Maximum leakage current, each
 line-to-ground @ 120 VAC 60 Hz: .22 mA
 @ 250 VAC 50 Hz: .38 mA

Hipot rating (one minute):
 line-to-ground 2250 VDC
 line-to-line 1450 VDC

Operating frequency: 50/60 Hz

Rated voltage: 120/250 VAC

Minimum insertion loss in dB:

EEA

Line-to-ground in 50 ohm circuit

Current Rating	Frequency-MHz								
	.01	.05	.1	.15	.5	1	5	10	30
1A	12	23	29	32	41	47	47	47	40
3A	-	10	15	19	30	36	48	50	47
6A	-	1	4	10	22	28	42	48	47
10A	-	1	3	5	14	20	32	38	47

Line-to-line in 50 ohm circuit

Current Rating	Frequency-MHz						
	.5	1	1.5	3	5	10	30
1A	1	9	19	32	42	45	40
3A	2	4	6	20	35	45	40
6A	2	4	6	6	24	40	40
10A	1	4	5	5	5	30	40

EEB

Line-to-ground in 50 ohm circuit

Current Rating	Frequency-MHz								
	.01	.05	.1	.15	.5	1	5	10	30
1A	12	23	29	32	41	47	47	47	40
3A	--	10	14	18	30	36	48	50	47
6A	--	1	4	10	22	28	42	48	47
10A	--	1	3	5	14	20	32	38	47

Line-to-line in 50 ohm circuit

Current Rating	Frequency-MHz							
	.01	.15	.5	1	3	5	10	30
1A	1	3	14	23	41	47	50	44
3A	1	2	11	14	25	38	44	40
6A	1	2	10	14	20	33	42	40
10A	1	2	10	16	19	19	39	40

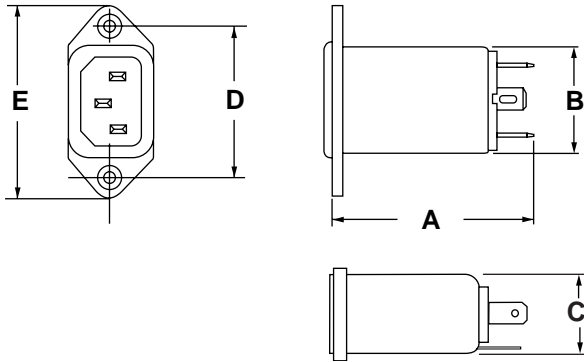
*Style 1 only

Series EEA, EEB

Case Styles

Metric shown in italics.

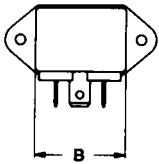
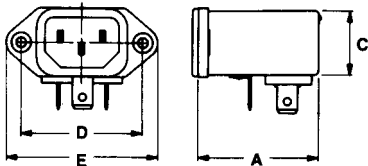
EEA1/EEB1



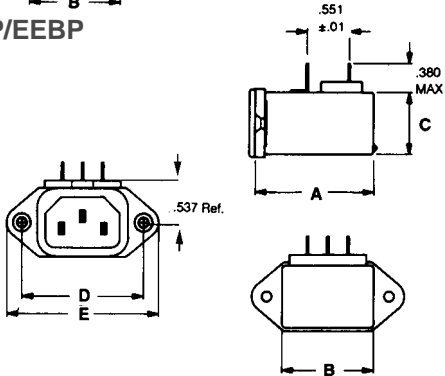
Typical dimensions

Terminals: $\frac{.250}{6.35}$ (3) Holes: $\frac{.07}{1.8}$ Dia.(2) Slot: $\frac{.07 \times .16}{1.8 \times 3.8}$ (1)

EEA2/EEB2

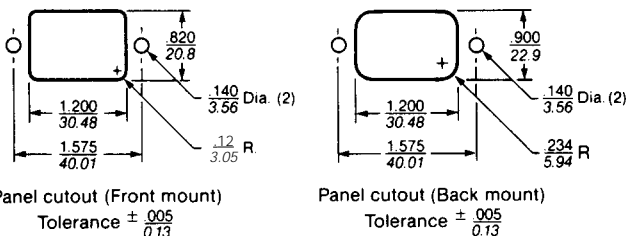


EEAP/EEBP



Mounting holes: $\frac{.132}{3.35}$ Dia.(2) with $.260$ Dia. x 90° countersunk for #4 Flathead Screw.

Recommended Panel Cutouts



Panel cutout (Front mount)

Tolerance $\pm .005$
0.13

Panel cutout (Back mount)

Tolerance $\pm .005$
0.13

Case Dimensions

Metric shown in italics.

Part No.	A (max)	B (max)	C (max)	D $\pm .010$ $\pm .25$	E (max)
EEA1	$\frac{2.15}{54.6}$	$\frac{1.13}{28.7}$	$\frac{0.81}{20.6}$	$\frac{1.575}{40.01}$	$\frac{1.98}{50.3}$
EEA2	$\frac{1.54}{39.1}$	$\frac{1.13}{28.7}$	$\frac{0.81}{20.6}$	$\frac{1.575}{40.01}$	$\frac{1.98}{50.3}$
EEAP	$\frac{1.54}{39.1}$	$\frac{1.13}{28.7}$	$\frac{0.81}{20.6}$	$\frac{1.575}{40.01}$	$\frac{1.98}{50.3}$
EEB1	$\frac{2.15}{54.6}$	$\frac{1.13}{28.7}$	$\frac{0.81}{20.6}$	$\frac{1.575}{40.01}$	$\frac{1.98}{50.3}$
EEB2	$\frac{1.54}{39.1}$	$\frac{1.13}{28.7}$	$\frac{0.81}{20.6}$	$\frac{1.575}{40.01}$	$\frac{1.98}{50.3}$
EEBP	$\frac{1.54}{39.1}$	$\frac{1.13}{28.7}$	$\frac{0.81}{20.6}$	$\frac{1.575}{40.01}$	$\frac{1.98}{50.3}$

Pricing

Consult your local Corcom sales representative for pricing.

Part No.	Part No.
1EEA1	1EEB1
1EEA2	1EEB2
1EEAP	1EEBP
3EEA1	3EEB1
3EEA2	3EEB2
3EEAP	3EEBP
6EEA1	6EEB1
6EEA2	6EEB2
6EEAP	6EEBP
10EEA1	10EEB1
10EEA2	10EEB2
10EEAP	10EEBP

Line Cord No. GA400

Insulating Boot No. FA601

EEAP/EEBP Model PCB Layout

