

Tools



Crimping Tool
RSZ,HE-HN,D-HVT 1-1105850-8



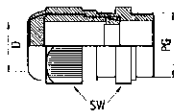
Extraction Tool
AWZG-HN,D-RSZ 0-1105550-8 (for HN,D)



Insertion Tool
1-1105606-8 (for HN,D and HE)

Cable Fittings and Accessories

Gland Fitting, Plastic

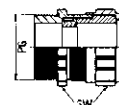


PG	D		SW
	min	max	
11	5	10	22
13.5	6	12	24
16	10	14	27
21	13	18	33
29	18	25	42
36	22	32	53
42	32	38	60

Part No.	Description	PG Size
1-1106005-7	HUT.11.P	11.0
2-1106005-7	HUT.13.P	13.5
3-1106005-7	HUT.16.P	16.0
4-1106005-7	HUT.21.P	21.0
5-1106005-7	HUT.29.P	29.0
6-1106005-7	HUT.36.P	36.0
7-1106005-7	HUT.42.P	42.0

Protection: IP 68

Gland Fitting, Brass



PG	D		SW
	min	max	
11	5	10	20
13.5	6	12	22
16	10	14	24
21	13	18	30
29	18	25	40
36	22	32	50
42	30	38	57

Part No.	Description	PG Size
1-1106006-9	HUT.11.MS	11.0
2-1106006-9	HUT.13.MS	13.5
3-1106006-9	HUT.16.MS	16.0
4-1106006-9	HUT.21.MS	21.0
5-1106006-9	HUT.29.MS	29.0
6-1106006-9	HUT.36.MS	36.0
7-1106006-9	HUT.42.MS	42.0

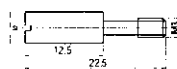
Protection: IP 68

Code Pin

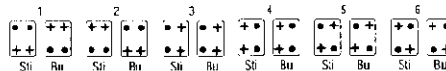


Part No.
1-1106100-1

Description
SPB-M3

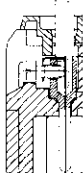


Coding with code pins
For housings with 1 contact insert



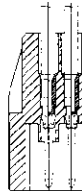
Guide pins and bushes on request

Termination Information for Contact Inserts



Screw Terminal

- all versions with wire protection
- Wire cross section HA 2.5 mm²
- Wire cross section HE 2.5 mm²
- Wire cross section HSB 6 mm²



Crimp Terminal

- Strip length HN,D – 8 mm
- Strip length HE /HA – 7.5 mm



Spring Clamp Terminal

- Wire cross section max. 2.5 mm²
- Wire cross section with wire pin max. 1.5 mm²

Crimp Contacts – Series HN,D



Pin	Socket
Silver Plated	Silver Plated
1-1105050-1	1-1105051-1
2-1105050-1	2-1105051-1
3-1105050-1	3-1105051-1
4-1105050-1	4-1105051-1
5-1105050-1	5-1105051-1
Gold Plated	Gold Plated
1-1105050-2	1-1105051-2
2-1105050-2	2-1105051-2
3-1105050-2	3-1105051-2
4-1105050-2	4-1105051-2
5-1105050-2	5-1105051-2

Crimp Contacts – Series HA/HE



Pin	Socket
Silver Plated	Silver Plated
1-1105100-1	1-1105101-1
2-1105100-1	2-1105101-1
3-1105100-1	3-1105101-1
4-1105100-1	4-1105101-1
5-1105100-1	5-1105101-1
Gold Plated	Gold Plated
1-1105100-2	1-1105101-2
2-1105100-2	2-1105101-2
3-1105100-2	3-1105101-2
4-1105100-2	4-1105101-2
5-1105100-2	5-1105101-2