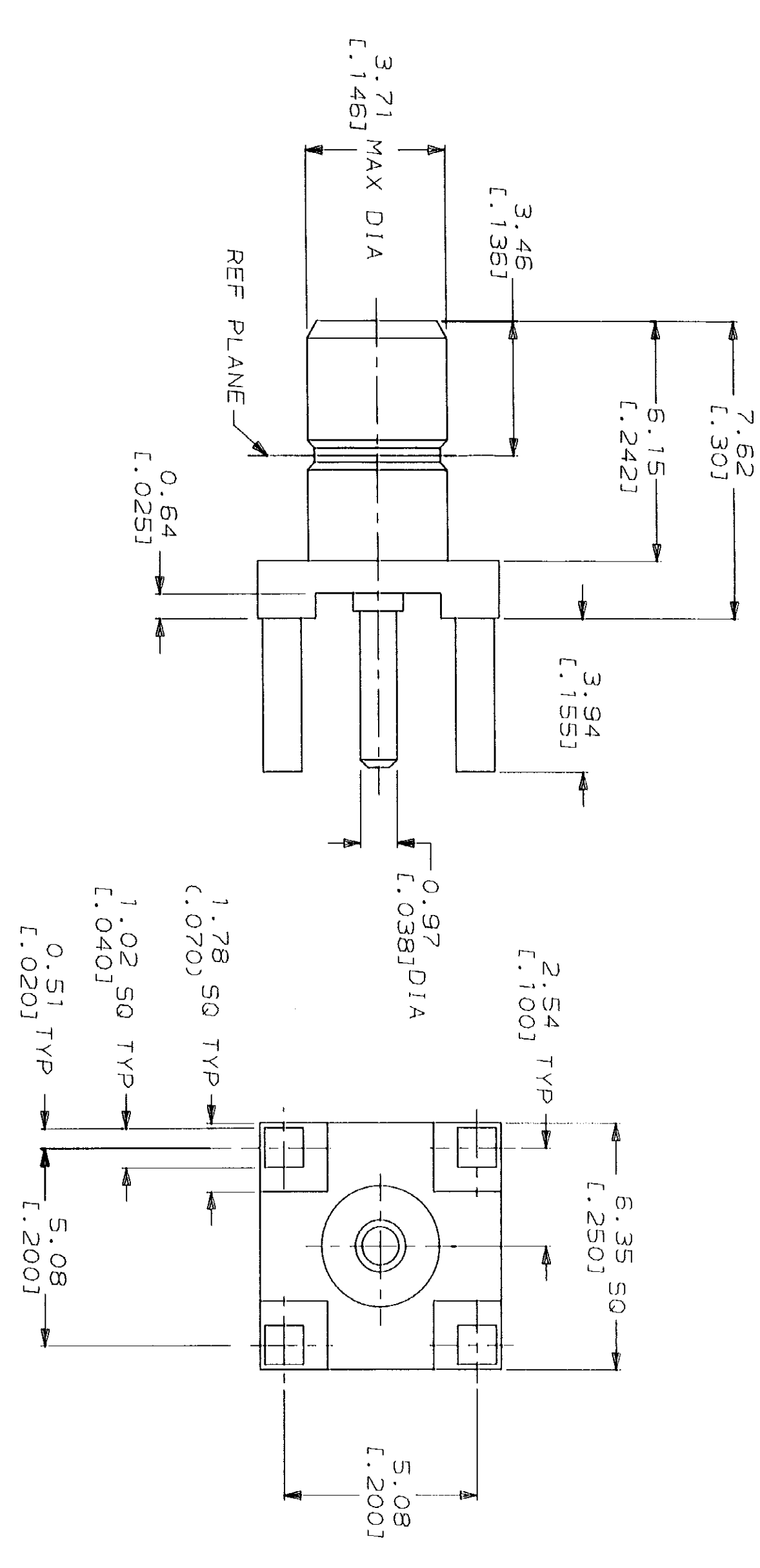


LOC	DIST	REV	ZONE	TR	DESCRIPTION	DATE	APPD
AJ	16						

REV	ZONE	TR	DESCRIPTION	DATE	APPD
0					
A			REMOVE .213, ADD DIM .30	10/17/90	KH
B			REVISED NOTES	10/29/90	KH
C			REL WAS 90-3348-020, REV A		
			REL PR 90-3348-025	12/10/90	KH
			CHG PAD DIM FROM .060 TO .070		
D			REV PER ECN AJ-5387	2/15/90	KH



1. MATERIALS:
 BODY... BRASS
 CONTACT... BRASS
 DIELECTRIC... TEFLON
2. FINISH:
 BODY AND CENTER CONTACT...
 GOLD PER MIL-G-45204 OVER
 NICKEL PER QQ-N-290.
3. FINISH:
 BODY... NICKEL
 PER QQ-N-290 OVER
 COPPER PER MIL-C-14550.
4. FINISH:
 CENTER CONTACT... GOLD
 PER MIL-G-45204 OVER
 NICKEL PER QQ-N-290.
5. INTERFACE PER MIL-C-39012.
 FINISH:
 BODY AND CENTER CONTACT...
 GOLD PER MIL-G-45204
 .000050 MIN THK OVER
 NICKEL PER QQ-N-290.

REV	DESCRIPTION	DATE	APPD
6			
4			
3			
2			

DO NOT SCALE PRINT. UNLESS SPECIFIED (INCHES) DIMENSIONS IN mm (INCHES) TOLERANCES ON: 2 PLC DEC ± .25 3 PLC DEC ± .130 ANGLES ±	DR OK J. McLEOD 9/27/90	9/27/90	AMP AMP Incorporated Harrisburg, PA 17105-3608
MATERIAL	APPD J. McLEOD 9/28/90	9/28/90	JACK, RCPT, STR, SMB/PCB
FINISH	APPD K. HELBIG PRODUCT SPEC	12/10/90	
SEE NOTES	APPLICATION SPEC		
SEE NOTES	WEIGHT		

METRIC

SIZE	CAGE CODE	DRAWING NO
SCALE	00779	413990
8:1		

CUSTOMER DRAWING