



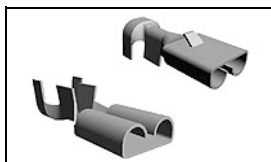
**Have a Question?**  
 Chat with a Product  
 Information Specialist

What can we help you find?

[Products](#) [Industries](#) [Resources](#) [About TE](#) [My Account](#) [Innovation](#) [Support Center](#)

## 42238-2 Product Details

[Share](#) [Print](#) [Email](#)



**42238-2**

TE Internal Number: 42238-2

Active

[View 3D PDF](#)

### Multiple Circuit Housings with Tabs & Receptacles

Always EU RoHS/ELV Compliant (Statement of Compliance)

#### Product Highlights:

- Contact
- Contact Type = Receptacle
- Mating Area Interface Dimensions = 6.35 x 0.81 mm
- Wire Range = 0.80-2.00<sup>2</sup> [18-14] mm [AWG]
- Insulation Diameter = 3.05-4.06 [.120-.160] mm [in]

[View all Features](#)

### Quick Links

- ▶ [Pricing & Availability](#)
- ▶ [Search for Tooling](#)
- ▶ [Product Feature Selector](#)
- ▶ [Contact Us About This Product](#)

[Add to My Part List](#) [Request Sample](#) [Find Similar Products](#) [Buy Product](#)

Documentation & Additional Information	
<p><b>Product Drawings:</b></p> <ul style="list-style-type: none"> <li>• <a href="#">.250 SERIES FASTIN -FASTON RECEPTACLE (PDF, English)</a></li> </ul> <p><b>Catalog Pages/Data Sheets:</b></p> <ul style="list-style-type: none"> <li>• <a href="#">FASTIN_FASTON_Product_Line (PDF, English)</a></li> </ul> <p><b>Product Specifications:</b></p> <ul style="list-style-type: none"> <li>• None Available</li> </ul> <p><b>Application Specifications:</b></p> <ul style="list-style-type: none"> <li>• <a href="#">.110 .187, .250, .312, and .375 Series FASTIN-FASTON... (PDF, English)</a></li> </ul> <p><b>Instruction Sheets:</b></p> <ul style="list-style-type: none"> <li>• <a href="#">AMP DOUBLE ACTION HAND TOOL 720725-1 (1) (PDF, Japanese)</a></li> <li>• <a href="#">AMP DOUBLE ACTION HAND TOOL 720725-1 (2) (PDF, Japanese)</a></li> </ul> <p><b>CAD Files: (CAD Format &amp; Compression Information)</b></p> <ul style="list-style-type: none"> <li>• <a href="#">2D Drawing (DXF, Version A)</a></li> <li>• <a href="#">3D Model (IGES, Version A)</a></li> <li>• <a href="#">3D Model (STEP, Version A)</a></li> </ul> <p style="text-align: right;"><a href="#">List all Documents</a></p>	<p><b>Related Products:</b></p> <ul style="list-style-type: none"> <li>• <a href="#">Tooling</a></li> </ul>

Product Features (Please use the Product Drawing for all design activity)	
<p><b>Product Type Features:</b></p> <ul style="list-style-type: none"> <li>• Product Type = Contact</li> <li>• Receptacle Style = Straight</li> <li>• Wire/Cable Type = Regular Wire</li> <li>• Finish = Tin</li> <li>• Insertion Force = Normal</li> <li>• Insulation Support = With</li> <li>• FASTON = Yes</li> </ul> <p><b>Termination Features:</b></p> <ul style="list-style-type: none"> <li>• Crimp Type = F-Crimp</li> </ul> <p><b>Dimensions:</b></p> <ul style="list-style-type: none"> <li>• Mating Area Interface Dimensions (mm [in]) = 6.35 x 0.81 [.250 x .032]</li> <li>• Insulation Diameter (mm [in]) = 3.05-4.06 [.120-.160]</li> </ul> <p><b>Body Features:</b></p> <ul style="list-style-type: none"> <li>• Wire Range (mm [AWG]) = 0.80-2.00<sup>2</sup> [18-14]</li> <li>• Material = Brass</li> <li>• Stock Thickness (mm [in]) = 0.30 [0.012]</li> </ul>	<p><b>Contact Features:</b></p> <ul style="list-style-type: none"> <li>• Contact Type = Receptacle</li> </ul> <p><b>Industry Standards:</b></p> <ul style="list-style-type: none"> <li>• RoHS/ELV Compliance = RoHS compliant, ELV compliant</li> <li>• Lead Free Solder Processes = Not relevant for lead free process</li> <li>• RoHS/ELV Compliance History = Always was RoHS compliant</li> </ul> <p><b>Conditions for Usage:</b></p> <ul style="list-style-type: none"> <li>• For Housing Type = Multiple</li> </ul> <p><b>Packaging Features:</b></p> <ul style="list-style-type: none"> <li>• Packaging Method = Loose Piece</li> </ul> <p><b>Other:</b></p> <ul style="list-style-type: none"> <li>• Line = FASTIN-FASTON .250</li> <li>• Brand = AMP</li> </ul>

### Corporate Information

[About TE](#)

### Quick Links

[Distributor Inventory](#)

### Customer Support

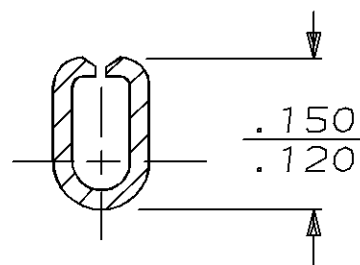
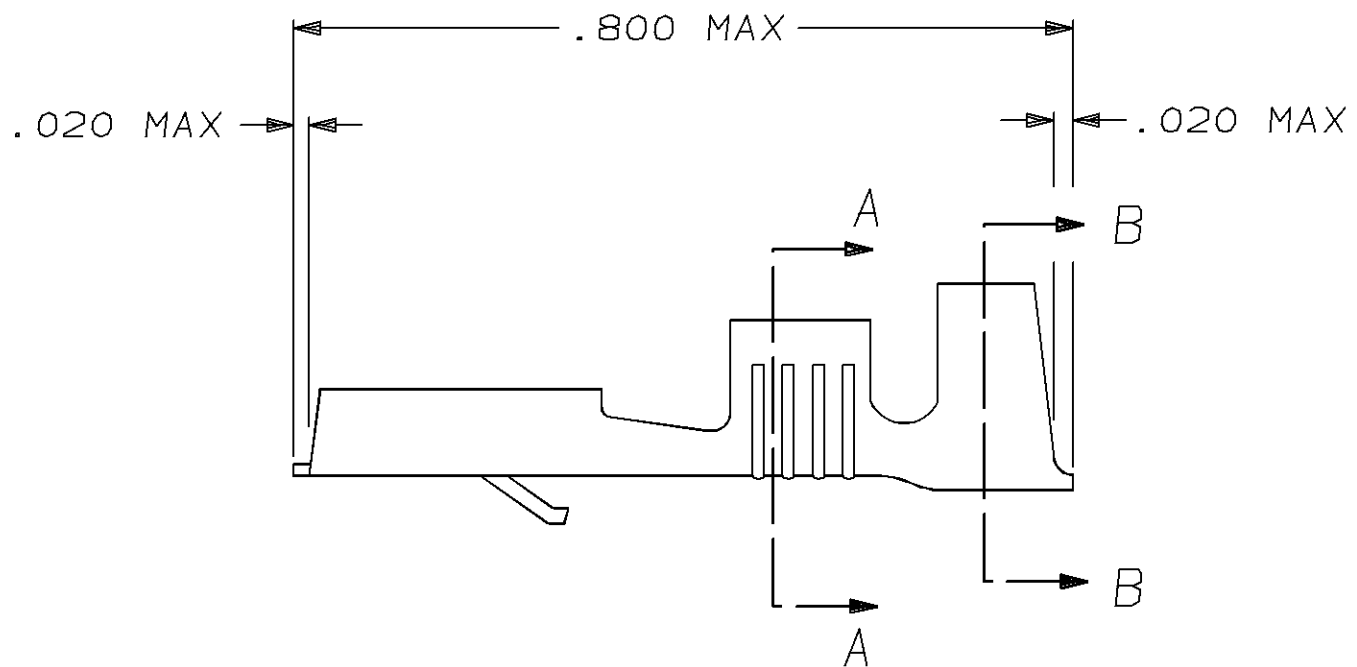
[Email or Chat With Us](#)

THIS DRAWING IS UNPUBLISHED. RELEASED FOR PUBLICATION

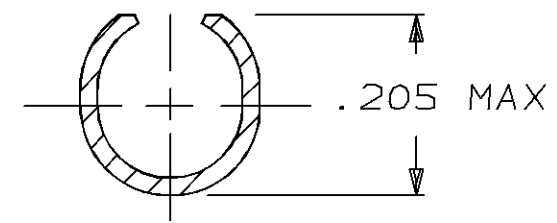
© COPYRIGHT

LOC	DIST	P	F	ZONE	LTR	DESCRIPTION	DATE	APPROVED
AF	50				B	REVISED PER ECR-13-005733	22AUG13	PD

1 - SUPPLIED IN LOOSE PIECE.



SECTION A-A



SECTION B-B

**OBSOLETE**

42100-3	SILVER	BRASS	.120-.160	18-14	.032 ±.001	42238-3
42100-2	TIN	BRASS	.120-.160	18-14	.032 ±.001	42238-2
42100-1	—	BRASS	.120-.160	18-14	.032 ±.001	42238-1
MAKE FROM	FINISH	MATERIAL	INSULATION RANGE	WIRE SIZE	TAB THK	PART NO

UNLESS OTHERWISE SPECIFIED DIMENSIONS ARE IN INCHES TOLERANCES ON:  
 2 PL DEC ± \_\_\_\_\_  
 3 PL DEC ± .015  
 ANGLES ± \_\_\_\_\_

MATERIAL  
.012 THK

FINISH  
SEE ABOVE

DR 11/6/86  
JR RUTH  
CHK 11/6/86  
G YETTER  
APPD 11/6/86  
J GILLESPIE  
APPD 11/6/86  
R KUZO  
PRODUCT SPEC \_\_\_\_\_  
APPLICATION SPEC \_\_\_\_\_  
WEIGHT \_\_\_\_\_

**TE** TE Connectivity

NAME .250 SERIES FASTIN - FASTON RECEPTACLE

SIZE <b>B</b>	FSCM NO 00779	DRAWING NO 42238
SCALE NTS	SHEET 1 OF 1	

CUSTOMER DRAWING