

Distributed by:

JAMECO[®]
ELECTRONICS

www.Jameco.com ♦ 1-800-831-4242

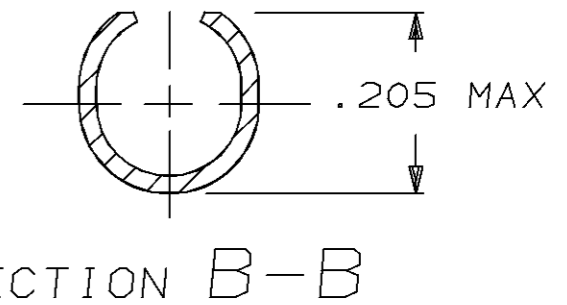
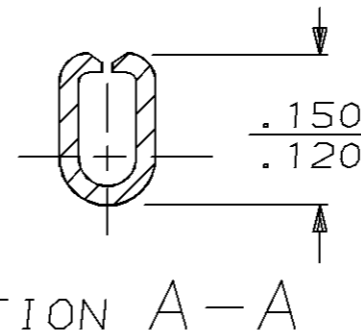
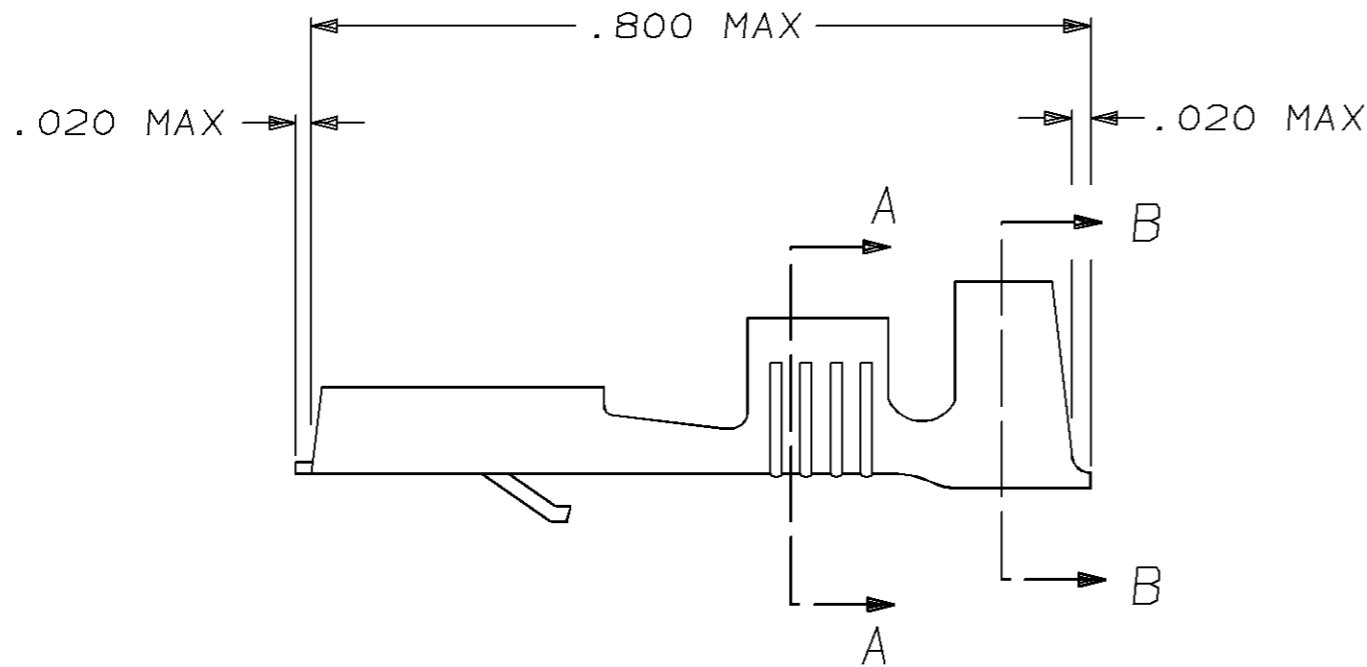
The content and copyrights of the attached
material are the property of its owner.

Jameco Part Number 946891

THIS DRAWING IS UNPUBLISHED. RELEASED FOR PUBLICATION, 19 .
 © COPYRIGHT 19 BY AMP INCORPORATED. ALL INTERNATIONAL RIGHTS RESERVED.

LOC	DIST	P	F	REVISIONS				
AF	50			ZONE	LTR	DESCRIPTION	DATE	APPD
					B	REV PER 0710-0186-95	5/4/95	JR/JG

- 1 SUPPLIED IN LOOSE PIECE FORM.
- 2 SEE STRIP DWG. 42281 FOR ADDITIONAL DETAILS.



OBSOLETE	SILVER	BRASS	.120-.160 DIA	#18-#14 AWG	.032	42282-3
	TIN	BRASS	.120-.160 DIA	#18-#14 AWG	.032	42282-2
	-	BRASS	.120-.160 DIA	#18-#14 AWG	.032	42282-1
FINISH	MATERIAL	INSUL RANGE	WIRE SIZE	MATING TAB THK ±.001	PART NO	

DO NOT SCALE PRINT. UNLESS SPECIFIED DIMENSIONS IN mm [INCHES] TOLERANCES ON: 2 PLC DEC ± - 3 PLC DEC ± .015 ANGLES ± - MATERIAL SEE TABLE FINISH SEE TABLE	DR	6/16/92	AMP AMP Incorporated Harrisburg, PA 17105-3608 NAME RECEPTACLE, FASTIN-FASTON, .250 SERIES		
	CHK	6/16/92			
	APPD	6/16/92			
	APPD	6/16/92			
FINISH	SEE TABLE	APPLICATION SPEC	SIZE	CAGE CODE	DRAWING NO
			B	00779	C-42282
		WEIGHT -	SCALE	5:1	SHEET 1 OF 1

THIS DRAWING IS A CONTROLLED DOCUMENT FOR AMP INCORPORATED. IT IS SUBJECT TO CHANGE AND THE CONTROLLING ENGINEERING ORGANIZATION SHOULD BE CONTACTED FOR THE LATEST REVISION.