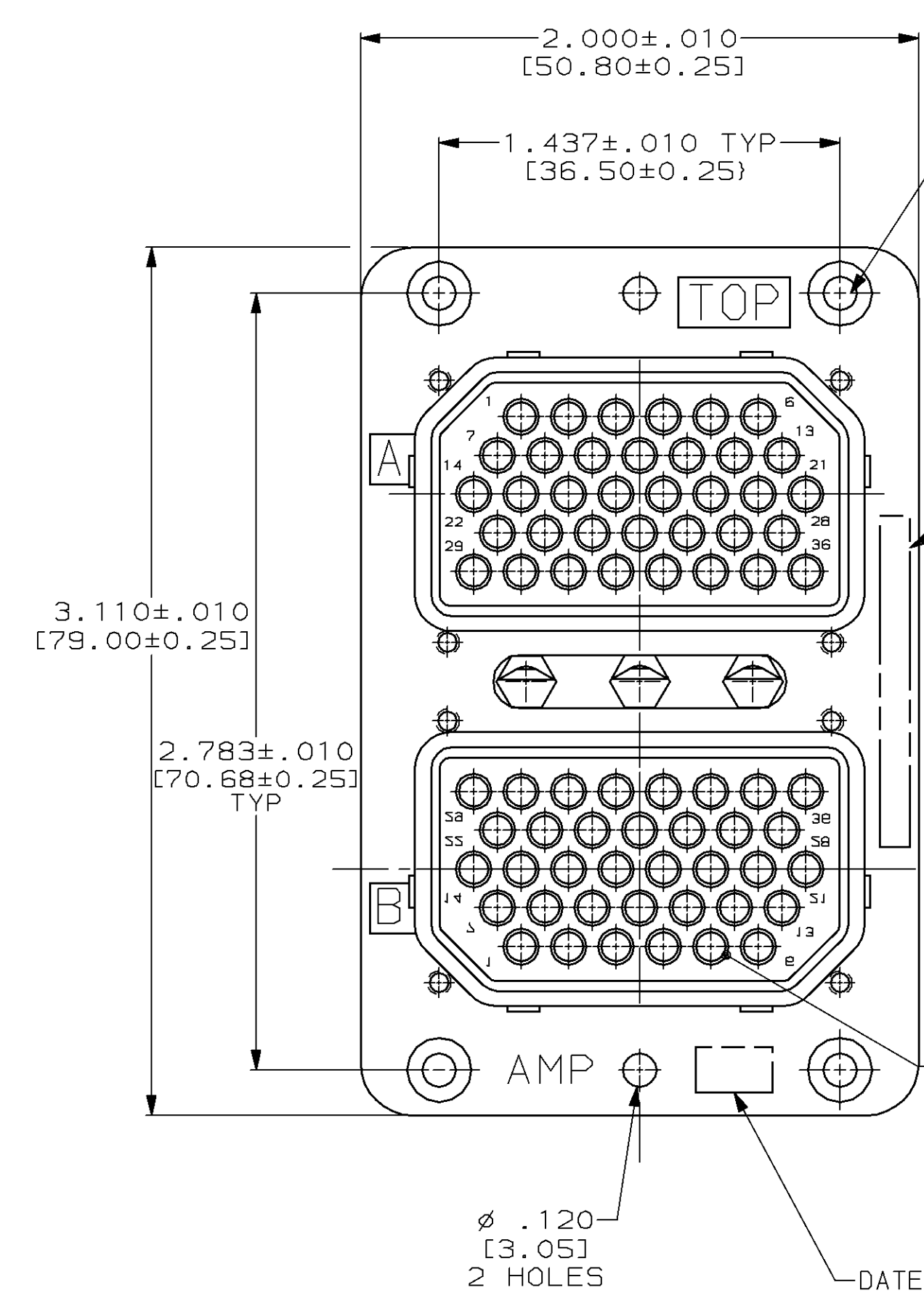


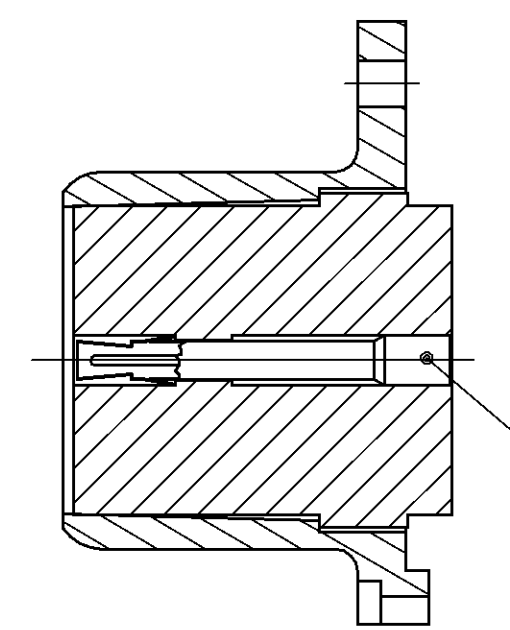
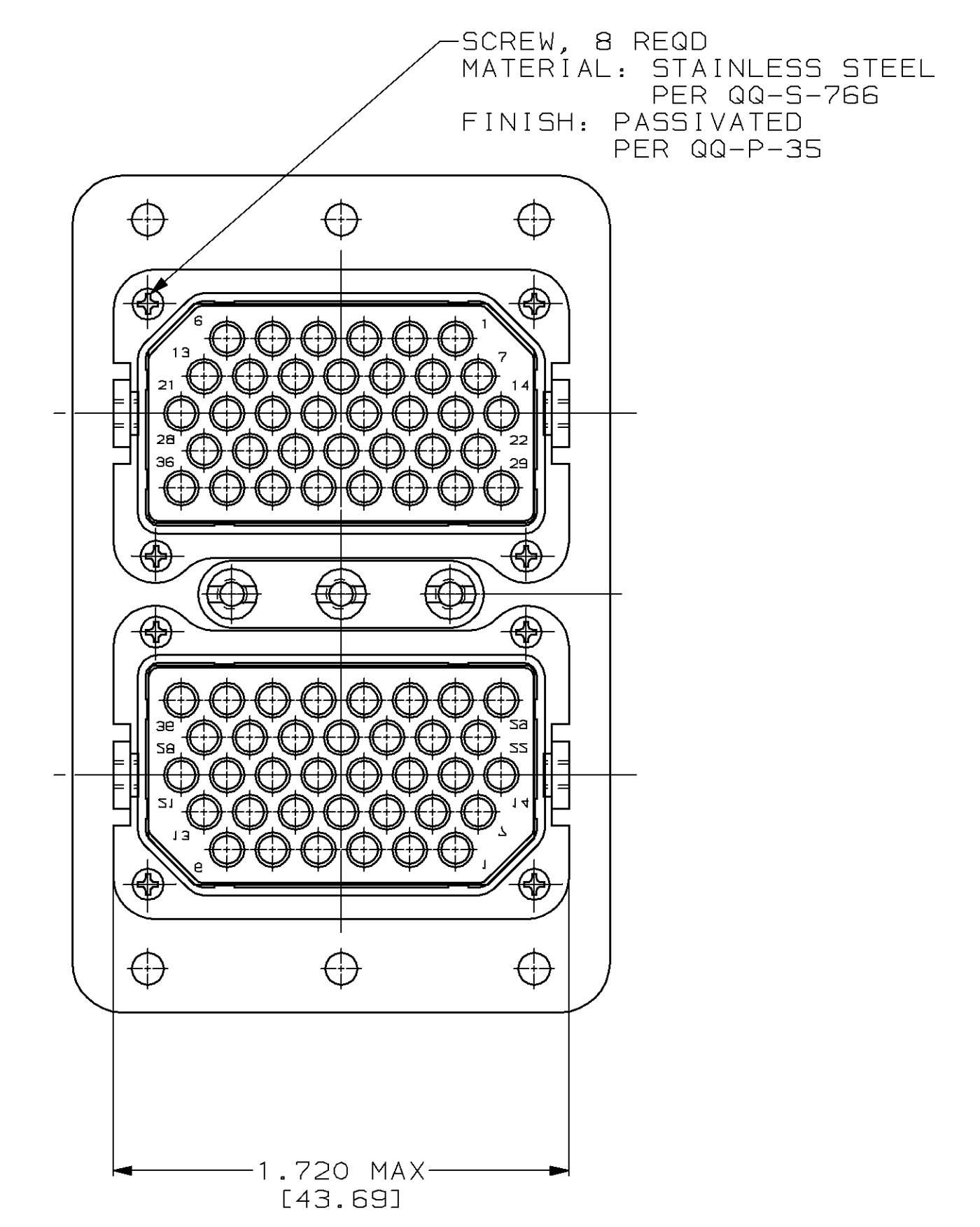
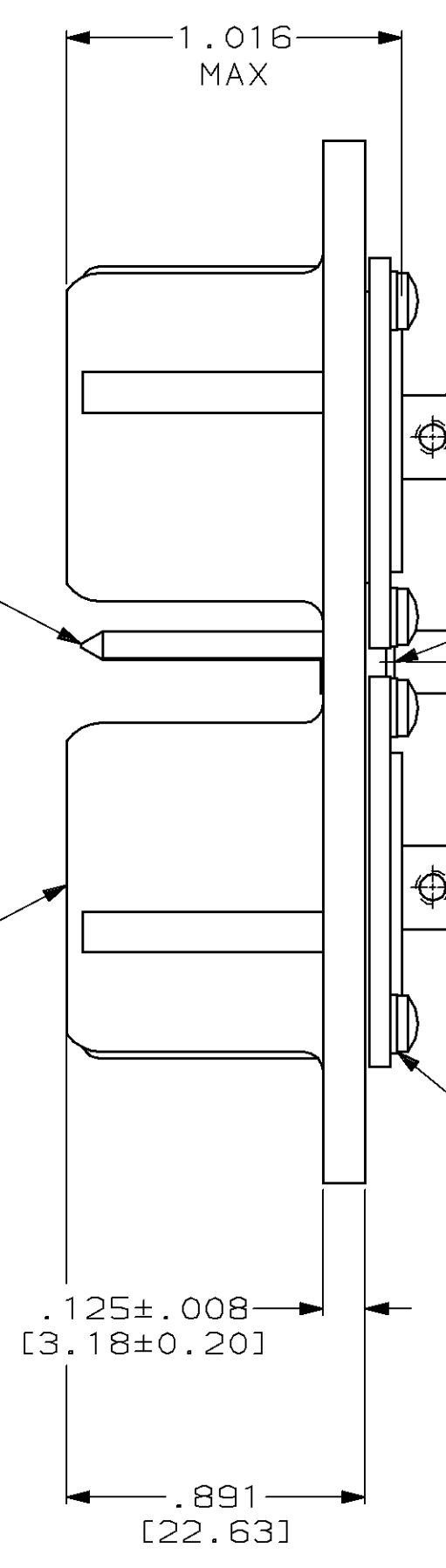
LOC	DIST	REV	DATE	BY	APPV
DF	AO	0	RELEASED PER 0600-5244-96	2-96	CT KG



.122 [3.10]
.118 [3.00] DIA
4 HOLES, CSKH
82° X .230 (5.48) DIA
FOR MTG WITH #4-40 SCREW

POLARIZING POST, 3 REQD
MATERIAL: STAINLESS STEEL
PER ASTM-A-582
FINISH: PASSIVATED
PER QQ-P-35
KEYED IN "01" POSITION

PLUG SHELL
MATERIAL: ALUMINUM ALLOY
PER QQ-A-591
FINISH: PLATED CADMIUM
PER QQ-P-416
YELLOW CHROMATE



RAYCHEN - SUBMINIATURE COAX SOCKET
PART NUMBER D-602-0279
CUSTOMER SUPPLIED

443158-1
PART NO.

<small>THIS DRAWING IS A CONTROLLED DOCUMENT FOR AMP INCORPORATED. IT IS SUBJECT TO CHANGE AND THE CONTROLLING ENGINEERING DEPARTMENT SHALL BE CONTACTED FOR THE LATEST REVISION.</small>		DWN C. C. THOMAS 2-21-96 CHK K. GUARAGNO 2-26-96 APVD K. GUARAGNO 2-26-96 NAME	AMP Incorporated Harrisburg, PA 17105-3608
DIMENSIONS: INCHES (mm)	TOLERANCES UNLESS OTHERWISE SPECIFIED: 0 PLC ±- 1 PLC ±- 2 PLC ±- 3 PLC ±.005 (0.13) 4 PLC ±- ANGLES ±-	PRODUCT SPEC APPLICATION SPEC	RM2P36S36S-02 (SPECIAL)
MATERIAL	FINISH	WEIGHT	SIZE A1 CAGE CODE 00779 DRAWING NO 443158
CUSTOMER DRAWING		SCALE	SHEET 1 OF 1 REV 0