

499252-8 Product Details

[Share](#) [Print](#) [Email](#)




499252-8

TE Internal Number: 499252-8

 Active

[View 3D PDF](#)

AMP-LATCH Ribbon Cable Connectors

 Always EU RoHS/ELV Compliant
(Statement of Compliance)

Product Highlights:

- AMP-LATCH Product Line
- Accessory Type = Strain Relief
- Accessory Color = Black
- Phosphor Bronze Contact Base Material
- Gold or Palladium Nickel or Performance Based Contact Plating, Mating Area, Material

[View all Features](#)

Quick Links

- ▶ [Pricing & Availability](#)
- ▶ [Search for Tooling](#)
- ▶ [Product Feature Selector](#)
- ▶ [Contact Us About This Product](#)

[Add to My Part List](#)

[Request Sample](#)

[Find Similar Products](#)

[Buy Product](#)

Documentation & Additional Information

Product Drawings:

- [STRAIN RELIEF, RECEPTACLE CONNECTOR, FLAT CABLE, AMP...](#) (PDF, English)

Catalog Pages/Data Sheets:

- [Ribbon Cable Interconnect Solutions](#) (PDF, English)

Product Specifications:

- None Available

Application Specifications:

- [AMP-LATCH Novo Receptacles for Ribbon Cable with Con...](#) (PDF, English)

Instruction Sheets:

- None Available

CAD Files: (CAD Format & Compression Information)

- [2D Drawing](#) (DXF, Version AL)
- [3D Model](#) (IGES, Version AL)
- [3D Model](#) (STEP, Version AL)

[List all Documents](#)

Additional Information:

- [Product Line Information](#)

Related Products:

- [Tooling](#)

Product Features (Please use the Product Drawing for all design activity)

Product Type Features:

- Product Line = AMP-LATCH
- Accessory Type = Strain Relief
- Accessory Color = Black
- Series = NOVO
- UL File Number = E28476
- CSA File Number = LR 7189

Dimensions:

- Length (X-Axis) (mm [in]) = 25.15 [0.9902]
- Width (Z-Axis) (mm [in]) = 6.10 [0.2402]
- Profile Height (Y-Axis) (mm [in]) = 14.76 [0.581]

Contact Features:

- Contact Base Material = Phosphor Bronze

Industry Standards:

- [RoHS/ELV Compliance](#) = RoHS compliant, ELV compliant
- [Lead Free Solder Processes](#) = Not relevant for lead free process
- [RoHS/ELV Compliance History](#) = Always was RoHS compliant
- Agency/Standard = UL, CSA
- UL Rating = Recognized

Operation/Application:

- Contact Transmits (Typical Application) = Signal
(Data)

Packaging Features:

- [Contact Plating, Mating Area, Material](#) = Gold or Palladium Nickel or Performance Based

- Packaging Method = Bag

Other:

- Brand = AMP

Corporate Information

- [About TE](#)
- [Investors](#)
- [News Room](#)
- [Supplier Portal](#)
- [Careers](#)
- [Terms & Conditions](#)
- [Privacy Policy](#)

Quick Links

- [Distributor Inventory](#)
- [Product Cross Reference](#)
- [Documents & Drawings](#)
- [Product Compliance Support Center](#)
- [Site Map](#)

Customer Support

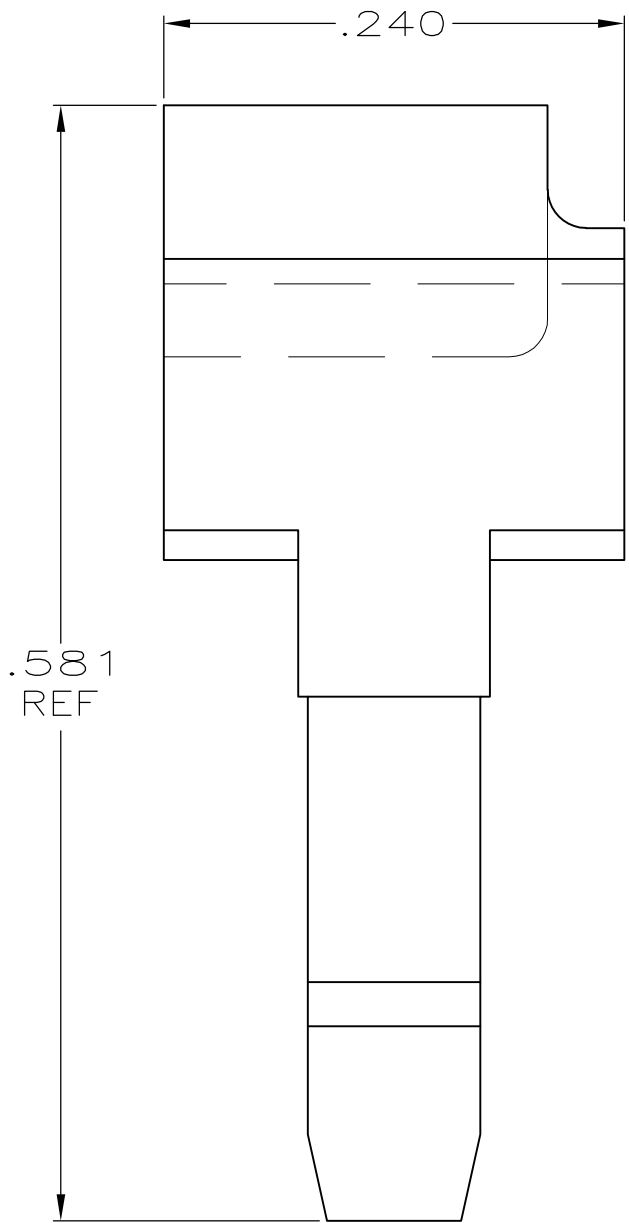
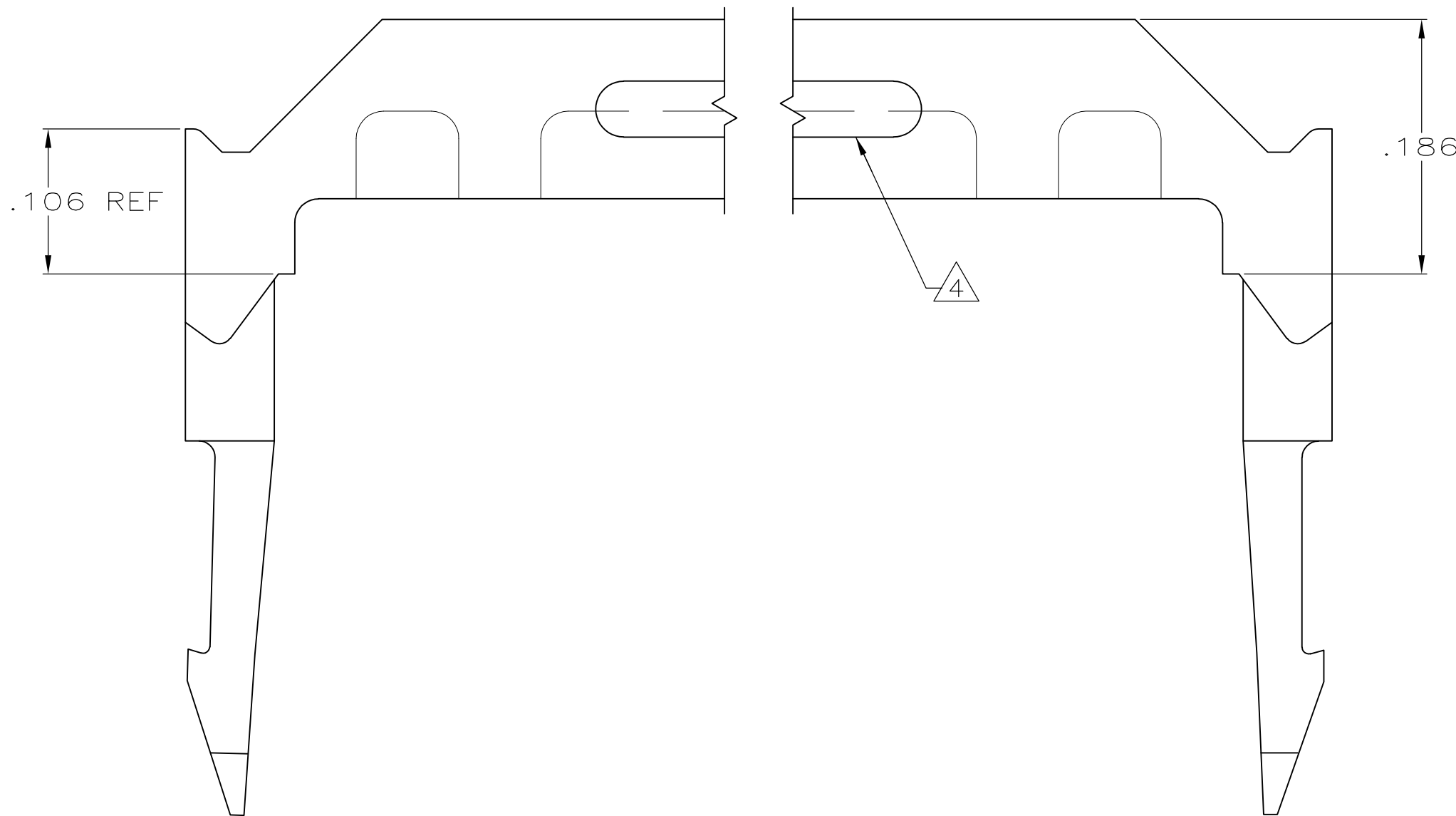
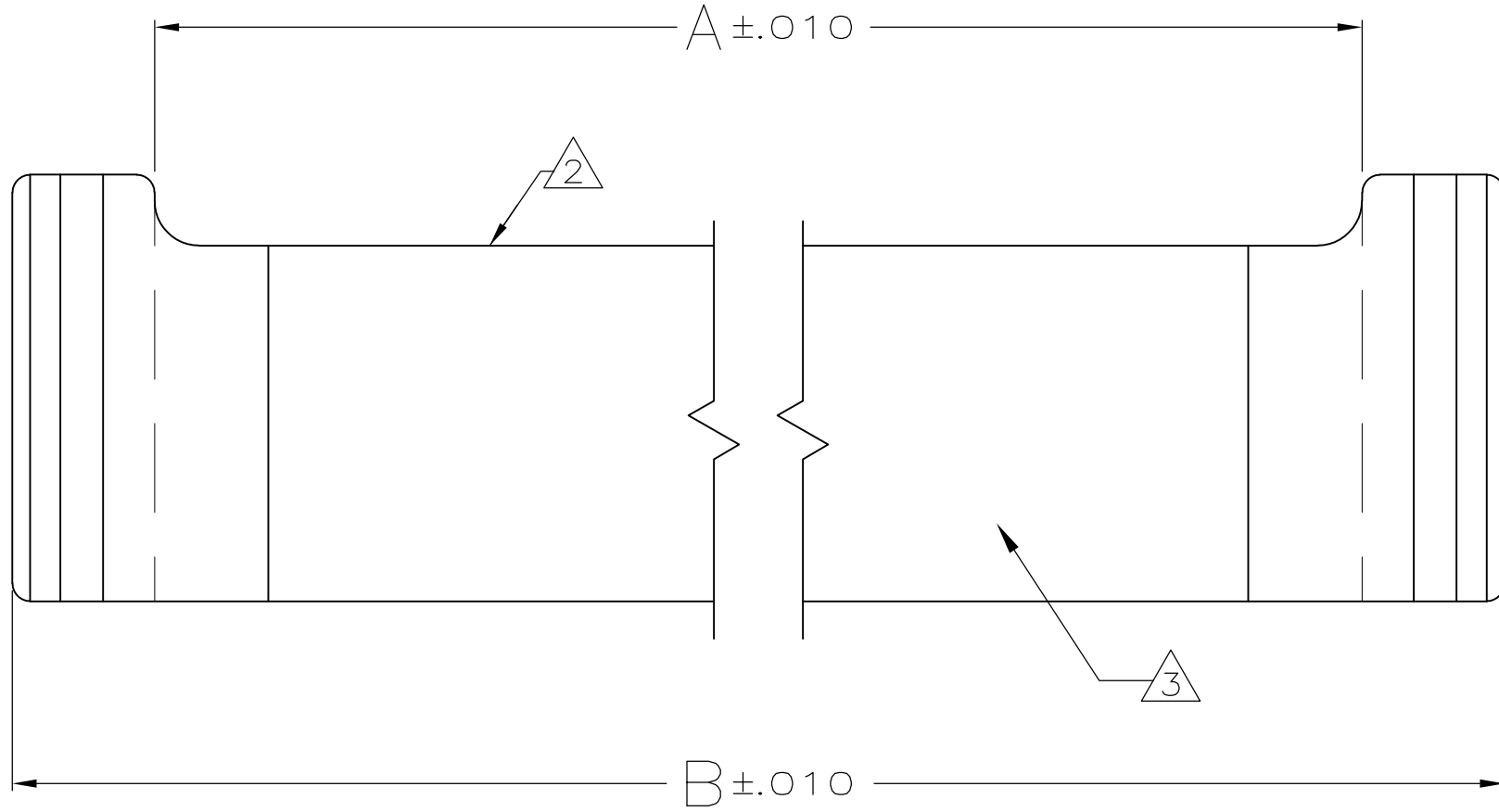
- [Email or Chat With Us](#)
- [Find a Phone Number](#)
- [Knowledge Base](#)
- [Manage Your Account](#)

Keep Me Informed



THIS DRAWING IS UNPUBLISHED. RELEASED FOR PUBLICATION
 © COPYRIGHT - By - ALL RIGHTS RESERVED.

LOC		DIST		REVISIONS			
P	LTR	DESCRIPTION		DATE	DWN	APVD	
GP	00	H3	REVISED PER ECO-11-005033		23MAR11	RK	HMR



- ① MATERIAL: FLAME RETARDANT THERMOPLASTIC, COLOR: BLACK.
- ② AMP TRADEMARK, MOLD CAVITY LETTER, AND MANUFACTURING ORIGIN (OPTIONAL) TO BE MOLDED ON THIS SURFACE.
- ③ ALTERNATE LOCATION FOR AMP TRADEMARK AND CAVITY ID.
- ④ CORING SLOTS IN BOTH SIDES AS INDICATED, OR IN UNDERSIDE OF PART.

1.990	1.834	36	1-499252-5
1.290	1.134	22	1-499252-4
3.390	3.234	64	1-499252-3
1.690	1.534	30	1-499252-2
2.390	2.234	44	1-499252-1
1.390	1.234	24	1-499252-0
.890	.734	14	499252-9
.990	.834	16	499252-8
3.190	3.034	60	499252-7
1.890	1.734	34	499252-6
.690	.534	10	499252-5
2.690	2.534	50	499252-4
1.490	1.334	26	499252-3
1.190	1.034	20	499252-2
2.190	2.034	40	499252-1
B	A	NO OF POSN	PART NUMBER

THIS DRAWING IS A CONTROLLED DOCUMENT.

DWN	J GALLUCCI BG	2-23-90
CHK	H.MOLL	3-5-90
APVD	-	-
PRODUCT SPEC	-	-
APPLICATION SPEC	-	-
WEIGHT	-	-
CUSTOMER DRAWING	SCALE 15:1	SHEET 1 of 1

TE Connectivity
 STRAIN RELIEF, RECEPTACLE CONNECTOR, FLAT CABLE, AMP-LATCH

SIZE	CAGE CODE	DRAWING NO	RESTRICTED TO
A2	00779	C=499252	-
REV	H3		