

5050865-5 Product Details

[Share](#) [Print](#) [Email](#)



5050865-5

TE Internal Number: 5050865-5

Active

[View 3D PDF](#)

Discrete Sockets

Always EU RoHS/ELV Compliant
(Statement of Compliance)

Product Highlights:

- Mini-Spring Socket Product Line
- Board-to-Board, Wire-to-Board
- Applies To Wire/Cable, Applies To Printed Circuit Board
- Contact - Rated Current = 7.5 A
- Wire/Cable Size = .518 - .823 mm²

[View all Features](#)

Quick Links

- ▶ [Pricing & Availability](#)
- ▶ [Search for Tooling](#)
- ▶ [Product Feature Selector](#)
- ▶ [Contact Us About This Product](#)

[Add to My Part List](#) [Request Sample](#) [Find Similar Products](#)
[Buy Product](#)

Documentation & Additional Information

Product Drawings:

- [MINIATURE SPRING SOCKET ASSEMBLY SERIES 4](#) (PDF, English)

Catalog Pages/Data Sheets:

- None Available

Product Specifications:

- None Available

Application Specifications:

- None Available

Instruction Sheets:

- None Available

CAD Files: (CAD Format & Compression Information)

- [2D Drawing](#) (DXF, Version A)
- [3D Model](#) (IGES, Version A)
- [3D Model](#) (STEP, Version A)

[List all Documents](#)

Additional Information:

- [Product Line Information](#)

Related Products:

- [Tooling](#)

Product Features (Please use the Product Drawing for all design activity)

Product Type Features:

- Product Line = Mini-Spring Socket
- [Sleeve Style](#) = Closed Bottom
- [Sealant](#) = Without
- Wire/Cable Type = Discrete Wire
- Product Series = 5
- Profile = Zero

Electrical Characteristics:

- Contact - Rated Current (A) = 7.5

Termination Features:

- Wire/Cable Size (mm²) = 0.518 - 0.823
- Wire/Cable Size (AWG) = 18 - 20
- [Insertion Method](#) = Hand/Semi-Automatic
- Termination Method to Wire/Cable = Solder
- Termination Method to PC Board = Through Hole - Press Fit

Contact Features:

- [Contact Spring Plating](#) = Gold (30)
- Contact Plating, Mating Area, Material = Gold (30)
- Contact Plating, Mating Area, Thickness (µm [µin]) = 0.00076 [0.03]
- Contact Type = Socket
- Contact Base Material = Beryllium Copper

Industry Standards:

- Government/Industry Qualification = No
- [RoHS/ELV Compliance](#) = RoHS compliant, ELV compliant
- [Lead Free Solder Processes](#) = Wave solder capable to 260°C, Wave solder capable to 240°C, Wave solder capable to 265°C, Reflow solder capable to 245°C, Reflow solder capable to 260°C, Pin-in-Paste capable to 245°C, Pin-in-Paste capable to 260°C
- RoHS/ELV Compliance History = Always was RoHS

<p>Dimensions:</p> <ul style="list-style-type: none"> • Socket Length (mm [in]) = 6.60 [0.260] • Recommended Hole Size (mm [in]) = 1.83 [0.072] • PCB Thickness, Recommended (mm [in]) = 0.79 – 3.18 [0.031 – 0.125] <p>Body Features:</p> <ul style="list-style-type: none"> • Mating Pin Dia. Range (mm [in]) = 0.86 – 1.04 [0.034 – 0.041] • Sleeve Material Plating = Tin • Wire Type = Solid • Sleeve Material = Copper • Spring Material = Beryllium Copper 	<p>compliant</p> <p>Environmental:</p> <ul style="list-style-type: none"> • Operating Temperature (°C [°F]) = -65 – +126 [-85 – +258] <p>Conditions for Usage:</p> <ul style="list-style-type: none"> • Applies To = Wire/Cable, Printed Circuit Board <p>Operation/Application:</p> <ul style="list-style-type: none"> • Application Use = Board-to-Board, Wire-to-Board • Contact Transmits (Typical Application) = Signal (Data)/Power • Application = Production <p>Packaging Features:</p> <ul style="list-style-type: none"> • Packaging Method = Loose Piece • Packaging Quantity = 2,000/Bag <p>Other:</p> <ul style="list-style-type: none"> • Brand = AMP
---	--

Corporate Information

- [About TE](#)
- [Investors](#)
- [News Room](#)
- [Supplier Portal](#)
- [Careers](#)
- [Terms & Conditions](#)
- [Privacy Policy](#)
- [AODA Accessibility Policy](#)
- [AODA Multi-Year Accessibility Plan](#)

Quick Links

- [Distributor Inventory](#)
- [Product Cross Reference](#)
- [Documents & Drawings](#)
- [Product Compliance Support Center](#)
- [Site Map](#)

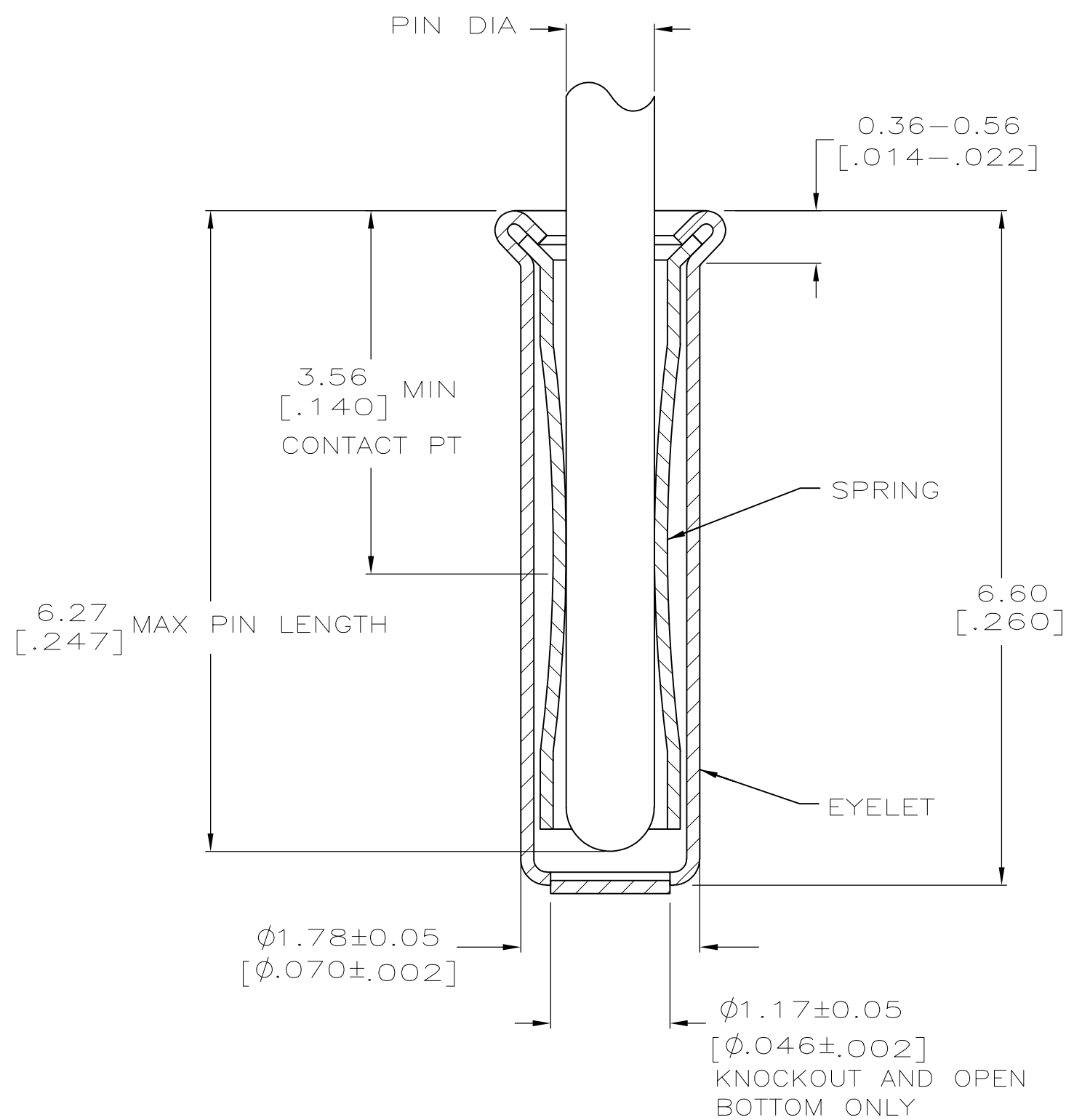
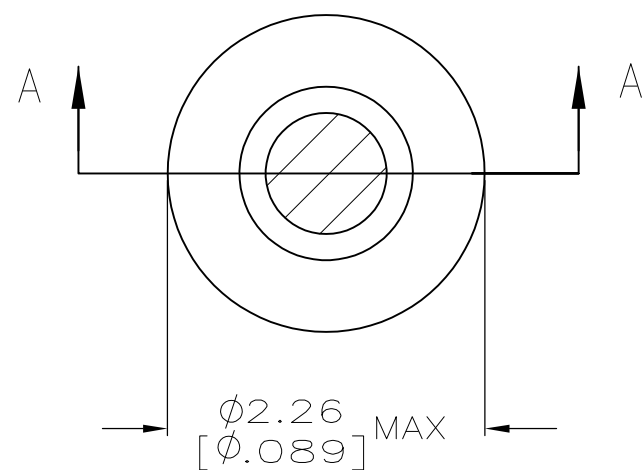
Customer Support

- [Email or Chat With Us](#)
- [Find a Phone Number](#)
- [Knowledge Base](#)
- [Manage Your Account](#)

Keep Me Informed



LOC	DIST	REVISIONS			
P	LTR	DESCRIPTION	DATE	DWN	APVD
GP	00	A1	REVISED PER ECO-11-004835	11MAR11	RK HMR



SECTION A-A

1. TIN PLATE PER ASTM-B-545 .000254 [.000100] MINIMUM THICK.
2. NICKEL UNDERPLATE ALL OVER, MATING SURFACE PLATED TO MEET PERFORMANCE REQUIREMENTS OF TE CONNECTIVITY PRODUCT SPECIFICATION 108-14008.
3. RECOMMENDED HOLE SIZE, PLATED OR UNPLATED:
 MACHINE INSERTION: $1.83 \begin{matrix} +0.10 \\ -0.08 \end{matrix} \begin{matrix} [.072 \ +.004 \\ \ -0.003] \end{matrix}$
 HAND INSERTION: $1.83 \begin{matrix} +0.10 \\ -0.00 \end{matrix} \begin{matrix} [.072 \ +.004 \\ \ -0.000] \end{matrix}$
4. APPLICATION TOOL PART NUMBER:
 MACHINE NO. 682127-5
 INSERTION HEAD NO. 682039-4
5. TO INSURE PROPER SPRING TENSION DO NOT EXCEED A 0.05 [.002] DIFFERENCE IN PIN DIA WHEN CHANGING TO A SMALLER PIN.
6. BOTTOM PLUG KNOCKOUT TOOL PART NUMBER 69729 WITH TIP PART NUMBER 69728-2.
7. MATERIAL: SPRING: BERYLLIUM COPPER QQ-C-533
 EYELET: COPPER, QQ-C-576

CLOSED KNOCKOUT	0.86-1.04 [.034-.041]	TIN $\triangle 1$	TIN $\triangle 1$	5050865-8
OPEN			GOLD $\triangle 2$	5050865-7
CLOSED				5050865-6
OPEN				5050865-5
CLOSED KNOCKOUT				5050865-3
OPEN				5050865-1
BOTTOM TYPE	RECOMMENDED PIN DIA $\triangle 5$	EYELET	SPRING	PART NO
		FINISH		

THIS DRAWING IS A CONTROLLED DOCUMENT.		DWN J. ALCORTA - DOCK5 20APR2005	TE Connectivity	
DIMENSIONS: mm [INCHES]		CHK J. HAVENER 25JUL2005	MINIATURE SPRING SOCKET ASSEMBLY SERIES 4	
TOLERANCES UNLESS OTHERWISE SPECIFIED:		APVD J. HAVENER 25JUL2005	NAME	RESTRICTED TO
0 PLC ± - 1 PLC ± - 2 PLC ± - 3 PLC ± 0.20 [.008] 4 PLC ± - ± - ANGLES ± -		PRODUCT SPEC 108-14008	SIZE A2	APVD
MATERIAL $\triangle 7$		FINISH SEE TABLE	CAGE CODE 00779	DRAWING NO C=5050865
		WEIGHT -	SCALE 20:1	SHEET 1 of 1
		CUSTOMER DRAWING	REV A1	