



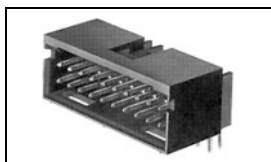
Have a Question?
Chat with a Product
Information Specialist

What can we help you find?

[Products](#) [Industries](#) [Resources](#) [About TE](#) [My Account](#) [Innovation](#) [Support Center](#)

5-102570-6 Product Details

[Share](#) [Print](#) [Email](#)



5-102570-6

TE Internal Number: 5-102570-6

Active

[View 3D PDF](#)

.100 inch AMPMODU Headers

Always EU RoHS/ELV Compliant (Statement of Compliance)

Product Highlights:

- Connector
- Header Type = Shrouded
- 16 Positions
- Mating Post Length = 8.08 mm
- Row-to-Row Spacing = 2.54 mm

[View all Features](#)

Quick Links

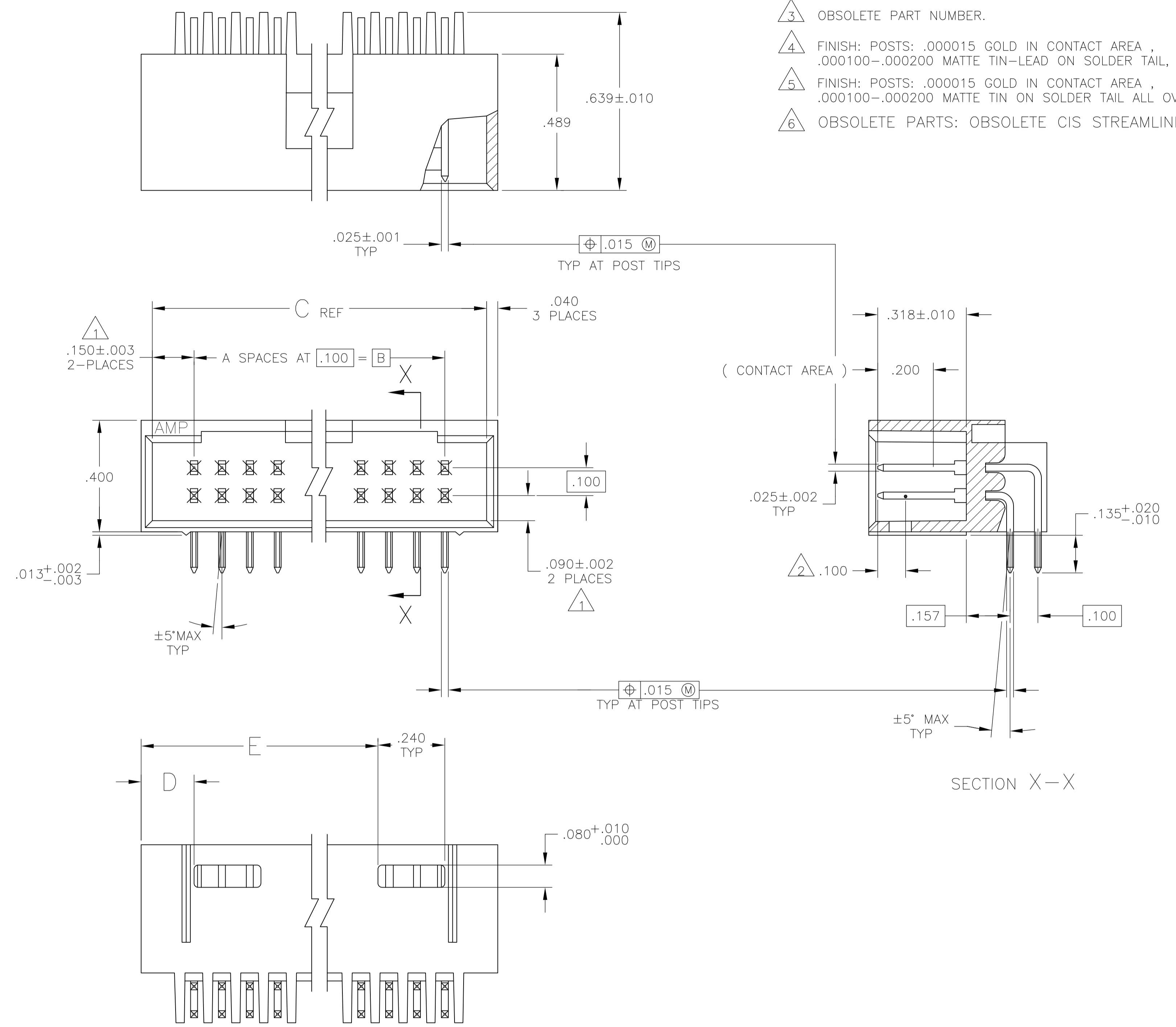
- ▶ [Pricing & Availability](#)
- ▶ [Search for Tooling](#)
- ▶ [Product Feature Selector](#)
- ▶ [Contact Us About This Product](#)

[Add to My Part List](#) [Request Sample](#) [Find Similar Products](#) [Buy Product](#)

Documentation & Additional Information	
<p>Product Drawings:</p> <ul style="list-style-type: none"> • HDR ASSY, MOD II, SHROUDED, .100X.100 C/L 4 SIDES, ... (PDF, English) <p>Catalog Pages/Data Sheets:</p> <ul style="list-style-type: none"> • AMPMODU_INTERCONNECTION_SYSTEM_SECTIONS5 (PDF, English) <p>Product Specifications:</p> <ul style="list-style-type: none"> • None Available <p>Application Specifications:</p> <ul style="list-style-type: none"> • None Available <p>Instruction Sheets:</p> <ul style="list-style-type: none"> • None Available <p>CAD Files: (CAD Format & Compression Information)</p> <ul style="list-style-type: none"> • 2D Drawing (DXF, Version H) • 3D Model (IGES, Version H) • 3D Model (STEP, Version H) 	<p>Additional Information:</p> <ul style="list-style-type: none"> • Product Line Information <p>Related Products:</p> <ul style="list-style-type: none"> • Tooling
List all Documents	

Product Features (Please use the Product Drawing for all design activity)	
<p>Product Type Features:</p> <ul style="list-style-type: none"> • Product Type = Connector • Mount Angle = Right Angle • PCB Mount Retention = Without • Surface Mount Compatible = No • Board Standoff = With • Mating Connector Lock = With • Mating Connector Lock Type = Detent Windows • Post Size (mm [in]) = 0.64 [.025] • Profile = Standard <p>Mechanical Attachment:</p> <ul style="list-style-type: none"> • Mounting Ears = Without • Panel Mount Retention = Without <p>Electrical Characteristics:</p> <ul style="list-style-type: none"> • Current Rating (A) = 3 • Insulation Resistance (MΩ) = 5,000 • Dielectric Withstanding Voltage (V) = 750 <p>Termination Features:</p> <ul style="list-style-type: none"> • Termination Post Length (mm [in]) = 3.43 [0.135] • Solder Tail Contact Plating = Tin over Nickel <p>Dimensions:</p> <ul style="list-style-type: none"> • Mating Post Length (mm [in]) = 8.08 [0.318] • [Shrouded] End Dimension (mm [in]) = 3.81 [0.150] <p>Body Features:</p> <ul style="list-style-type: none"> • Header Type = Shrouded • Row-to-Row Spacing (mm [in]) = 2.54 [0.100] • Selectively Loaded = No • Mount Type = Printed Circuit Board 	<p>Contact Features:</p> <ul style="list-style-type: none"> • Contact Plating, Mating Area, Material = Gold (15) • Contact Shape = Square • Contact Base Material = Phosphor Bronze <p>Housing Features:</p> <ul style="list-style-type: none"> • Housing Material = Thermoplastic - GF • Housing Style = 4-Sided • Housing Color = Black • UL Flammability Rating = UL 94V-0 <p>Configuration Features:</p> <ul style="list-style-type: none"> • Number of Positions = 16 • Number of Rows = 2 <p>Industry Standards:</p> <ul style="list-style-type: none"> • RoHS/ELV Compliance = RoHS compliant, ELV compliant • Lead Free Solder Processes = Wave solder capable to 240°C • RoHS/ELV Compliance History = Always was RoHS compliant • Approved Standards = CSA LR7189, UL E28476 <p>Environmental:</p> <ul style="list-style-type: none"> • Operating Temperature (°C) = -55 - +105 <p>Conditions for Usage:</p> <ul style="list-style-type: none"> • High Temperature Housing = No <p>Operation/Application:</p> <ul style="list-style-type: none"> • High Speed Serial Data Connector = No <p>Other:</p> <ul style="list-style-type: none"> • Brand = TE Connectivity

- 1 THE NOTED DIMENSIONS APPLY AT THE INTERSECTION OF THE POST AND HOUSING.
- 2 POINT OF MEASUREMENT FOR PLATING THICKNESS.
- 3 OBSOLETE PART NUMBER.
- 4 FINISH: POSTS: .000015 GOLD IN CONTACT AREA, .000100-.000200 MATTE TIN-LEAD ON SOLDER TAIL, ALL OVER .000050 NICKEL.
- 5 FINISH: POSTS: .000015 GOLD IN CONTACT AREA, .000100-.000200 MATTE TIN ON SOLDER TAIL ALL OVER .000050 NICKEL.
- 6 OBSOLETE PARTS: OBSOLETE CIS STREAMLINING PER D.RENAUD/D.SINISI



SECTION X-X

RECOMMENDED HOLE LAYOUT

PLATING	E	D	C	B	A	NO OF POSN	ASSEMBLY PART NUMBER
6	3.490	.190	3.800	3.500	35	72	8-102570-3
6	3.390	.190	3.700	3.400	34	70	8-102570-2
6	3.290	.190	3.600	3.300	33	68	8-102570-1
6	3.190	.190	3.500	3.200	32	66	8-102570-0
6	3.090	.190	3.400	3.100	31	64	7-102570-9
6	2.990	.190	3.300	3.000	30	62	7-102570-8
6	2.890	.190	3.200	2.900	29	60	7-102570-7
6	2.790	.190	3.100	2.800	28	58	7-102570-6
6	2.690	.190	3.000	2.700	27	56	7-102570-5
6	2.590	.190	2.900	2.600	26	54	7-102570-4
6	2.490	.190	2.800	2.500	25	52	7-102570-3
6	2.390	.190	2.700	2.400	24	50	7-102570-2
6	2.290	.190	2.600	2.300	23	48	7-102570-1
6	2.190	.190	2.500	2.200	22	46	7-102570-0
6	2.090	.190	2.400	2.100	21	44	6-102570-9
6	1.990	.190	2.300	2.000	20	42	6-102570-8
6	1.790	.190	2.100	1.800	18	38	6-102570-7
6	1.690	.190	2.000	1.700	17	36	6-102570-6
6	1.590	.190	1.900	1.600	16	34	6-102570-5
6	1.490	.190	1.800	1.500	15	32	6-102570-4
6	1.390	.190	1.700	1.400	14	30	6-102570-3
6	1.290	.190	1.600	1.300	13	28	6-102570-2
6	1.190	.190	1.500	1.200	12	26	6-102570-1
6	1.090	.190	1.400	1.100	11	24	6-102570-0
6	.990	.190	1.300	1.000	10	22	5-102570-9
6	.890	.190	1.200	.900	9	20	5-102570-8
6	---	.490	1.100	.800	8	18	5-102570-7
6	---	.390	1.000	.700	7	16	5-102570-6
6	---	.390	.900	.600	6	14	5-102570-5
6	---	.290	.800	.500	5	12	5-102570-4
6	---	.290	.700	.400	4	10	5-102570-3
6	---	.190	.600	.300	3	8	5-102570-2
6	1.890	.190	2.200	1.900	19	40	5-102570-1
6	3.490	.190	3.800	3.500	35	72	3-102570-3
6	3.390	.190	3.700	3.400	34	70	3-102570-2
6	3.290	.190	3.600	3.300	33	68	3-102570-1
6	3.190	.190	3.500	3.200	32	66	3-102570-0
6	3.090	.190	3.400	3.100	31	64	2-102570-9
6	2.990	.190	3.300	3.000	30	62	2-102570-8
6	2.890	.190	3.200	2.900	29	60	2-102570-7
6	2.790	.190	3.100	2.800	28	58	2-102570-6
6	2.690	.190	3.000	2.700	27	56	2-102570-5
6	2.590	.190	2.900	2.600	26	54	2-102570-4
6	2.490	.190	2.800	2.500	25	52	2-102570-3
6	2.390	.190	2.700	2.400	24	50	2-102570-2
6	2.290	.190	2.600	2.300	23	48	2-102570-1
6	2.190	.190	2.500	2.200	22	46	2-102570-0
6	2.090	.190	2.400	2.100	21	44	1-102570-9
6	1.990	.190	2.300	2.000	20	42	1-102570-8
6	1.790	.190	2.100	1.800	18	38	1-102570-7
6	1.690	.190	2.000	1.700	17	36	1-102570-6
6	1.590	.190	1.900	1.600	16	34	1-102570-5
6	1.490	.190	1.800	1.500	15	32	1-102570-4
6	1.390	.190	1.700	1.400	14	30	1-102570-3
6	1.290	.190	1.600	1.300	13	28	1-102570-2
6	1.190	.190	1.500	1.200	12	26	1-102570-1
6	1.090	.190	1.400	1.100	11	24	1-102570-0
6	.990	.190	1.300	1.000	10	22	102570-9
6	.890	.190	1.200	.900	9	20	102570-8
6	---	.490	1.100	.800	8	18	102570-7
6	---	.390	1.000	.700	7	16	102570-6
6	---	.390	.900	.600	6	14	102570-5
6	---	.290	.800	.500	5	12	102570-4
6	---	.290	.700	.400	4	10	102570-3
6	---	.190	.600	.300	3	8	102570-2
6	1.890	.190	2.200	1.900	19	40	102570-1

6 SUP BY 7-102570-2

THIS DRAWING IS A CONTROLLED DOCUMENT.

APPROVED: A. MAYER, R. FEIDT

DATE: 25-8-87, 21-8-87

TE Connectivity

HDR ASSY, MOD II, SHROUDED, .100X.100 C/L 4 SIDES, DBL ROW, RIGHT ANGLE, W/ .025 SQ POSTS

SIZE: A1, WEIGHT: 00779, DRAWING NO: 102570

SCALE: 4:1, SHEET: 1 OF 1, REV: H2