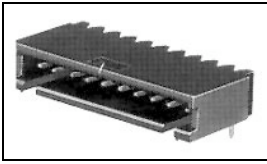


## 5-103361-2 Product Details

[Share](#) [Print](#) [Email](#)



**5-103361-2**

TE Internal Number: 5-103361-2

 Active

 [View 3D PDF](#)

### .100 inch AMPMODU Headers

 Always EU RoHS/ELV Compliant (Statement of Compliance)

#### Product Highlights:

- Connector
- Header Type = Shrouded
- 4 Positions
- Mating Post Length = 6.10 mm
- Row-to-Row Spacing = 2.54 mm

[View all Features](#)

### Quick Links

- ▶ [Pricing & Availability](#)
- ▶ [Search for Tooling](#)
- ▶ [View Mating Products \(1\)](#)
- ▶ [Product Feature Selector](#)
- ▶ [Contact Us About This Product](#)

[Add to My Part List](#) [Request Sample](#) [Find Similar Products](#) [Buy Product](#)

### Documentation & Additional Information

#### Product Drawings:

- [HEADER ASSEMBLY, MOD II, SINGLE ROW .100 CL, RIGHT ANGLE](#) (PDF, English)

#### Catalog Pages/Data Sheets:

- [AMPMODU\\_INTERCONNECTION\\_SYSTEM\\_SECTIONS5](#) (PDF, English)

#### Product Specifications:

- None Available

#### Application Specifications:

- None Available

#### Instruction Sheets:

- None Available

#### CAD Files: (CAD Format & Compression Information)

- [2D Drawing](#) (DXF, Version N)
- [3D Model](#) (IGES, Version N)
- [3D Model](#) (STEP, Version N)

[List all Documents](#)

#### Additional Information:

- [Product Line Information](#)

#### Related Products:

- [Tooling](#)
- [Mating Products \(1\)](#)

### Product Features (Please use the Product Drawing for all design activity)

#### Product Type Features:

- Product Type = Connector
- Mount Angle = Right Angle
- PCB Mount Retention = Without
- Board Standoff = With
- Mating Connector Lock = Without
- Post Size (mm [in]) = 0.64 [.025]
- Profile = Standard

#### Mechanical Attachment:

- Mounting Ears = Without
- Panel Mount Retention = Without

#### Electrical Characteristics:

- Current Rating (A) = 3
- Insulation Resistance (MΩ) = 5,000
- Dielectric Withstanding Voltage (V) = 750

#### Termination Features:

- Termination Post Length (mm [in]) = 2.79 [0.110]

#### Dimensions:

- Mating Post Length (mm [in]) = 6.10 [0.240]

#### Body Features:

- Header Type = Shrouded
- Row-to-Row Spacing (mm [in]) = 2.54 [0.100]
- Selectively Loaded = No
- Mount Type = Printed Circuit Board

#### Contact Features:

- Contact Plating, Mating Area, Material = Gold (30)
- Solder Tail Contact Plating = Tin over Nickel
- Contact Shape = Square
- Contact Base Material = Phosphor Bronze

#### Housing Features:

- Housing Material = Thermoplastic - GF
- Housing Style = 4-Sided
- Housing Color = Black
- UL Flammability Rating = UL 94V-0

#### Configuration Features:

- Number of Positions = 4
- Number of Rows = 1
- Surface Mount Compatible = No

#### Industry Standards:

- RoHS/ELV Compliance = RoHS compliant, ELV compliant
- Lead Free Solder Processes = Wave solder capable to 240°C
- RoHS/ELV Compliance History = Always was RoHS compliant
- Approved Standards = CSA LR7189, UL E28476

#### Environmental:

- Operating Temperature (°C) = -55 - +105

#### Conditions for Usage:

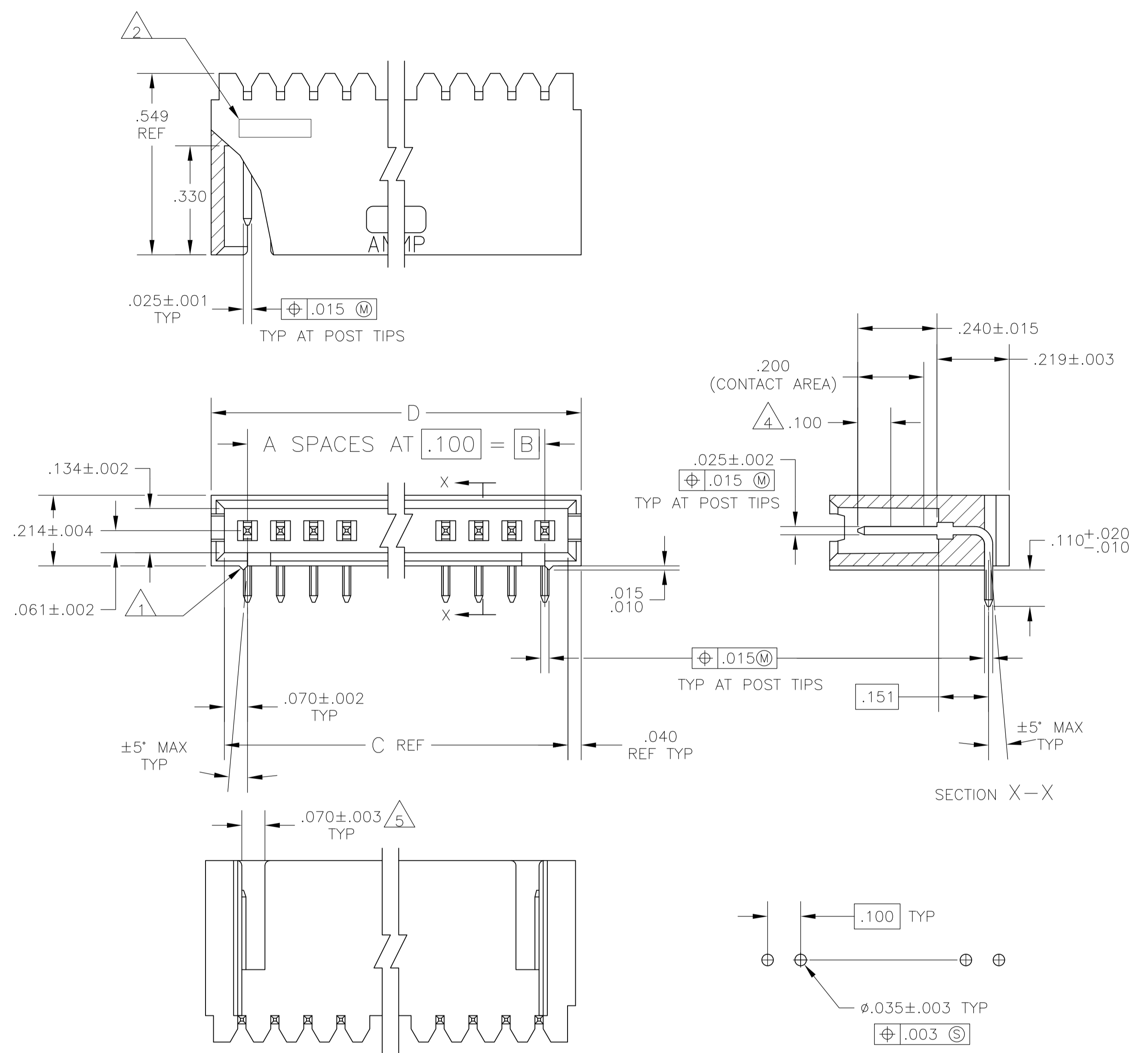
- High Temperature Housing = No

#### Operation/Application:

- High Speed Serial Data Connector = No

#### Other:

- Brand = TE Connectivity



RECOMMENDED HOLE LAYOUT

- 1 STANDOFFS:  
3 TRHU 9 POSN - (2 REQD) ON OUTSIDE ENDS OF HOUSING  
10 THRU 18 POSN - (3 REQD) TWO ON OUTSIDE ENDS AND ONE CENTERED ON HOUSING  
19 POSN AND LARGER - (4 REQD) TWO ON OUTSIDE ENDS AND TWO EVENLY SPACED WITHIN REMAINING LENGTH OF HOUSING
- 2 RECESSED DATE CODE
- 3 .000030 GOLD IN CONTACT AREA, .000100-.000200 MATTE TIN-LEAD IN SOLDER AREA, ALL OVER .000050 MIN NICKEL
- 4 POINT OF MEASUREMENT FOR GOLD PLATING THICKNESS
- 5 FOR 3 POS ONLY, ONE SLOT .215 WIDE.
- 6 .000030 GOLD IN CONTACT AREA, .000100-.000200 MATTE TIN IN SOLDER AREA, ALL OVER .000050 MIN NICKEL
- 7 OBSOLETE PARTS: OBSOLETE CIS STREAMLINING PER D.RENAUD/D.SINISI

| REV     | DESCRIPTION | DATE  | BY    | APPV  |              |          |             |
|---------|-------------|-------|-------|-------|--------------|----------|-------------|
| △       | OBSOLETE    | 2.620 | 2.540 | 2.400 | 24           | 25       | -7-103361-3 |
| △       |             | 2.520 | 2.440 | 2.300 | 23           | 24       | 7-103361-2  |
| △       | OBSOLETE    | 2.420 | 2.340 | 2.200 | 22           | 23       | -7-103361-1 |
| △       |             | 2.320 | 2.240 | 2.100 | 21           | 22       | -7-103361-0 |
| △       |             | 2.220 | 2.140 | 2.000 | 20           | 21       | -6-103361-9 |
| △       |             | 2.120 | 2.040 | 1.900 | 19           | 20       | 6-103361-8  |
| △       | OBSOLETE    | 2.020 | 1.940 | 1.800 | 18           | 19       | -6-103361-7 |
| △       |             | 1.920 | 1.840 | 1.700 | 17           | 18       | -6-103361-6 |
| △       |             | 1.820 | 1.740 | 1.600 | 16           | 17       | -6-103361-5 |
| △       |             | 1.720 | 1.640 | 1.500 | 15           | 16       | 6-103361-4  |
| △       | OBSOLETE    | 1.620 | 1.540 | 1.400 | 14           | 15       | -6-103361-3 |
| △       |             | 1.520 | 1.440 | 1.300 | 13           | 14       | 6-103361-2  |
| △       | OBSOLETE    | 1.420 | 1.340 | 1.200 | 12           | 13       | -6-103361-1 |
| △       |             | 1.320 | 1.240 | 1.100 | 11           | 12       | 6-103361-0  |
| △       | OBSOLETE    | 1.220 | 1.140 | 1.000 | 10           | 11       | -5-103361-9 |
| △       |             | 1.120 | 1.040 | .900  | 9            | 10       | 5-103361-8  |
| △       |             | 1.020 | .940  | .800  | 8            | 9        | 5-103361-7  |
| △       |             | .920  | .840  | .700  | 7            | 8        | 5-103361-6  |
| △       |             | .820  | .740  | .600  | 6            | 7        | 5-103361-5  |
| △       |             | .720  | .640  | .500  | 5            | 6        | 5-103361-4  |
| △       |             | .620  | .540  | .400  | 4            | 5        | 5-103361-3  |
| △       |             | .520  | .440  | .300  | 3            | 4        | 5-103361-2  |
| △       |             | .420  | .340  | .200  | 2            | 3        | 5-103361-1  |
| △       | OBSOLETE    | 3.720 | 3.640 | 3.500 | 35           | 36       | 3-103361-4  |
| △       | OBSOLETE    | 3.620 | 3.540 | 3.400 | 34           | 35       | 3-103361-3  |
| △       | OBSOLETE    | 3.520 | 3.440 | 3.300 | 33           | 34       | 3-103361-2  |
| △       | OBSOLETE    | 3.420 | 3.340 | 3.200 | 32           | 33       | 3-103361-1  |
| △       | OBSOLETE    | 3.320 | 3.240 | 3.100 | 31           | 32       | 3-103361-0  |
| △       | OBSOLETE    | 3.220 | 3.140 | 3.000 | 30           | 31       | 2-103361-9  |
| △       | OBSOLETE    | 3.120 | 3.040 | 2.900 | 29           | 30       | 2-103361-8  |
| △       | OBSOLETE    | 3.020 | 2.940 | 2.800 | 28           | 29       | 2-103361-7  |
| △       | OBSOLETE    | 2.920 | 2.840 | 2.700 | 27           | 28       | 2-103361-6  |
| △       | OBSOLETE    | 2.820 | 2.740 | 2.600 | 26           | 27       | 2-103361-5  |
| △       | OBSOLETE    | 2.720 | 2.640 | 2.500 | 25           | 26       | 2-103361-4  |
| △       | OBSOLETE    | 2.620 | 2.540 | 2.400 | 24           | 25       | -2-103361-3 |
| △       |             | 2.520 | 2.440 | 2.300 | 23           | 24       | 2-103361-2  |
| △       |             | 2.420 | 2.340 | 2.200 | 22           | 23       | -2-103361-1 |
| △       | OBSOLETE    | 2.320 | 2.240 | 2.100 | 21           | 22       | -2-103361-0 |
| △       |             | 2.220 | 2.140 | 2.000 | 20           | 21       | -1-103361-9 |
| △       |             | 2.120 | 2.040 | 1.900 | 19           | 20       | 1-103361-8  |
| △       | OBSOLETE    | 2.020 | 1.940 | 1.800 | 18           | 19       | -1-103361-7 |
| △       |             | 1.920 | 1.840 | 1.700 | 17           | 18       | -1-103361-6 |
| △       |             | 1.820 | 1.740 | 1.600 | 16           | 17       | -1-103361-5 |
| △       |             | 1.720 | 1.640 | 1.500 | 15           | 16       | 1-103361-4  |
| △       | OBSOLETE    | 1.620 | 1.540 | 1.400 | 14           | 15       | -1-103361-3 |
| △       |             | 1.520 | 1.440 | 1.300 | 13           | 14       | 1-103361-2  |
| △       |             | 1.420 | 1.340 | 1.200 | 12           | 13       | 1-103361-1  |
| △       | OBSOLETE    | 1.320 | 1.240 | 1.100 | 11           | 12       | 1-103361-0  |
| △       |             | 1.220 | 1.140 | 1.000 | 10           | 11       | -103361-9   |
| △       |             | 1.120 | 1.040 | .900  | 9            | 10       | 103361-8    |
| △       |             | 1.020 | .940  | .800  | 8            | 9        | 103361-7    |
| △       |             | .920  | .840  | .700  | 7            | 8        | 103361-6    |
| △       |             | .820  | .740  | .600  | 6            | 7        | 103361-5    |
| △       |             | .720  | .640  | .500  | 5            | 6        | 103361-4    |
| △       |             | .620  | .540  | .400  | 4            | 5        | 103361-3    |
| △       |             | .520  | .440  | .300  | 3            | 4        | 103361-2    |
| △       |             | .420  | .340  | .200  | 2            | 3        | 103361-1    |
| PLATING | D           | C     | B     | A     | NO. OF POSN. | PART NO. |             |

THIS DRAWING IS A CONTROLLED DOCUMENT.

DIN: S.A. SHUEY 28SEP89  
 CHK: H.MOLL 30CT89  
 APPV: R.FELICKER 30CT89  
 NAME: TE Connectivity

PRODUCT SPEC: HEADER ASSEMBLY, MOD II, SINGLE ROW .100 CL, RIGHT ANGLE

APPLICATION SPEC: -

SIZE: A1  
 CASE CODE: 00779  
 DRAWING NO: 103361

RESTRICTED TO: -

MATERIAL HOUSING: FLAME RETARDANT THERMOPLASTIC; COLOR-BLACK; POSTS:PHOS BRONZE

FINISH: SEE TABLE

WEIGHT: -

CUSTOMER DRAWING

SCALE: 4:1 SHEET 1 OF 1 REV: N2