

## 5145154-8 Product Details

[Share](#) [Print](#) [Email](#)




5145154-8

TE Internal Number: 5145154-8

 Active

[View 3D PDF](#)

### PCI & PCI Express Connectors

 Always EU RoHS/ELV Compliant  
(Statement of Compliance)

### Product Highlights:

- Family Name = PCI
- PCB Mounting Orientation = Vertical
- 60 Dual Positions
- 120 Positions
- Housing Color = White

[View all Features](#)

### Quick Links

- ▶ [Pricing & Availability](#)
- ▶ [Search for Tooling](#)
- ▶ [Product Feature Selector](#)
- ▶ [Contact Us About This Product](#)

[Add to My Part List](#)

[Request Sample](#)

[Find Similar Products](#)

[Buy Product](#)

### Documentation & Additional Information

#### Product Drawings:

- [CONNECTOR ASSEMBLY, 60 DUAL POSITION, 1.27 \[.050\] SE...](#) (PDF, English)

#### Catalog Pages/Data Sheets:

- None Available

#### Product Specifications:

- [Connector, Card Edge, .050 Centerline](#) (PDF, English)

#### Application Specifications:

- [Card Edge Printed Circuit \(PC\) Board Connectors](#) (PDF, English)

#### Instruction Sheets:

- None Available

#### CAD Files: (CAD Format & Compression Information)

- [2D Drawing](#) (DXF, Version B)
- [3D Model](#) (IGES, Version B)
- [3D Model](#) (STEP, Version B)

[List all Documents](#)

#### Related Products:

- [Tooling](#)

### Product Features (Please use the Product Drawing for all design activity)

#### Product Type Features:

- Family Name = PCI
- PCB Mounting Orientation = Vertical
- [PCB Mount Style](#) = Through Hole
- PCB Mount Retention Type = Pylon

#### Electrical Characteristics:

- [Voltage \(VAC\)](#) = 203
- Operating Voltage (VAC) = 203
- Operating Voltage Reference = AC

#### Termination Features:

- [Termination Post Length \(mm \[in\]\)](#) = 3.18 [0.125]

#### Dimensions:

- Length (mm [in]) = 84.84 [3.340]
- Width (mm [in]) = 8.80 [0.346]
- Height (mm [in]) = 13.97 [0.550]

#### Housing Features:

- Housing Color = White
- Centerline (mm [in]) = 1.27 [0.050]
- Housing Material = PA46

#### Configuration Features:

- [Number of Dual Positions](#) = 60
- Number of Positions = 120

#### Industry Standards:

- [RoHS/ELV Compliance](#) = RoHS compliant, ELV compliant
- [Lead Free Solder Processes](#) = Wave solder capable to 260°C, Wave solder capable to 240°C, Wave solder capable to 265°C
- [RoHS/ELV Compliance History](#) = Always was RoHS compliant

- PCB Thickness, Accepted (mm [in]) = 1.57 [0.062]

**Body Features:**

- Bus Width = 32 Bit
- Ejector = Without
- Number of Pylons = 2
- Pylon Material = Plastic

**Contact Features:**

- Contact Plating, Mating Area, Material = Gold (30)
- Contact Base Material = Phosphor Bronze
- Solder Tail Contact Plating = Tin over Nickel

**Environmental:**

- Operating Temperature Range (°C) = -55 - +85

**Operation/Application:**

- Pick and Place Cover = Without

**Packaging Features:**

- Packaging Method = Box/Carton

**Other:**

- Brand = AMP

**Corporate Information**

[About TE](#)  
[Investors](#)  
[News Room](#)  
[Supplier Portal](#)  
[Careers](#)  
[Terms & Conditions](#)  
[Privacy Policy](#)

**Quick Links**

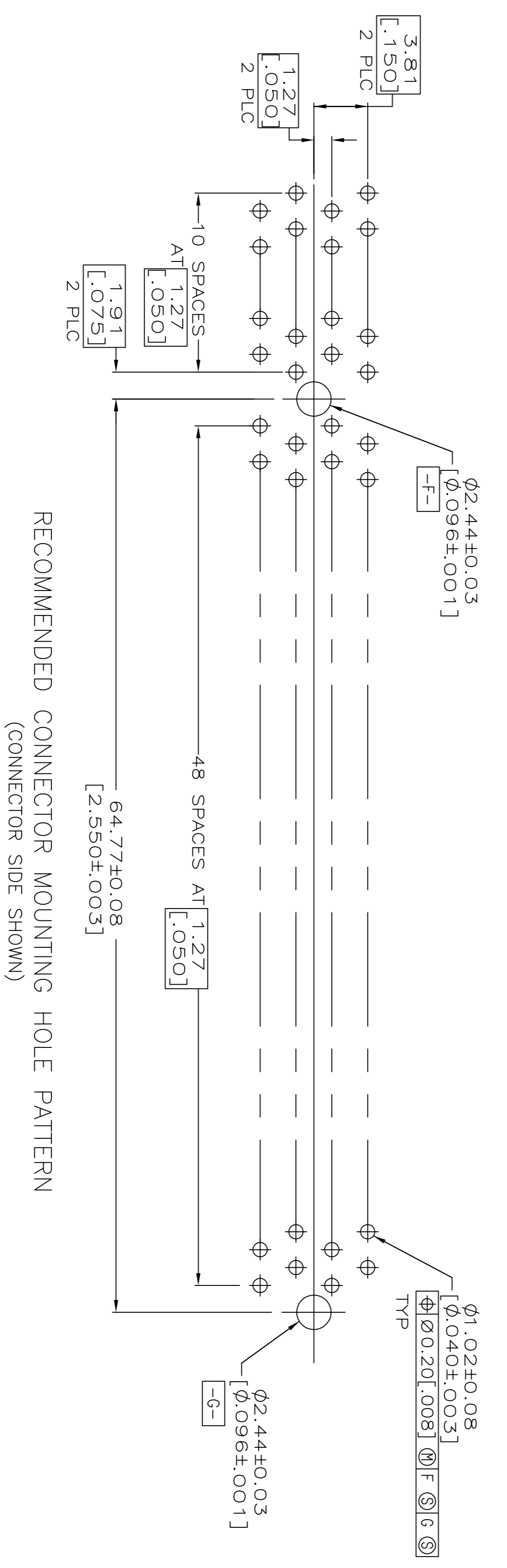
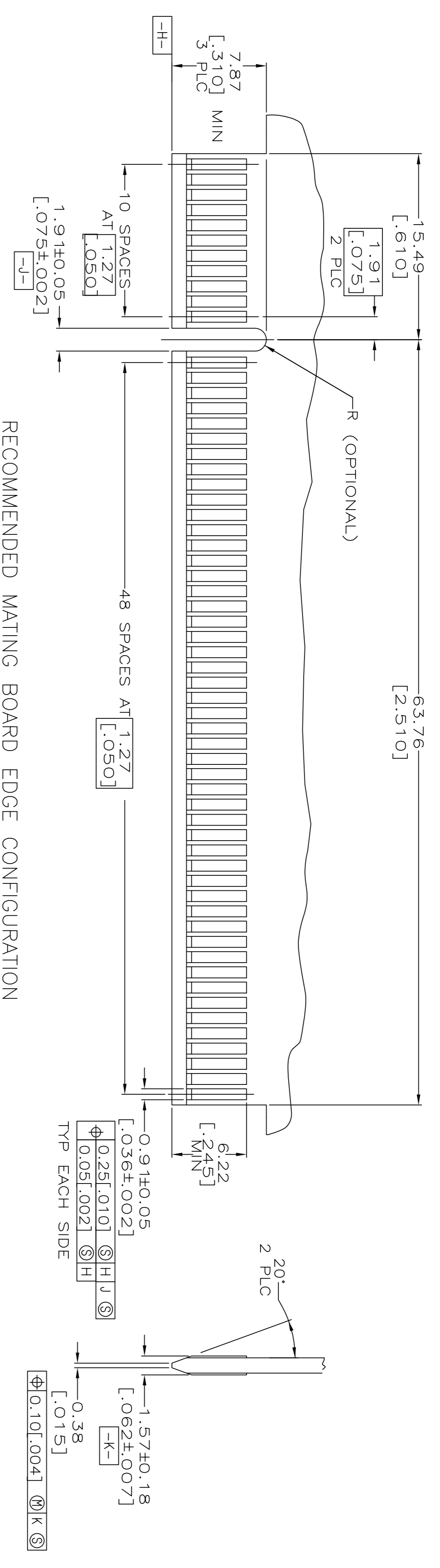
[Distributor Inventory](#)  
[Product Cross Reference](#)  
[Documents & Drawings](#)  
[Product Compliance Support Center](#)  
[Site Map](#)

**Customer Support**

[Email or Chat With Us](#)  
[Find a Phone Number](#)  
[Knowledge Base](#)  
[Manage Your Account](#)

**Keep Me Informed**





THIS DRAWING IS A CONTROLLED DOCUMENT.

REV	DATE	BY	APP'D
1	20 MAR 04	AL FRANTUM	

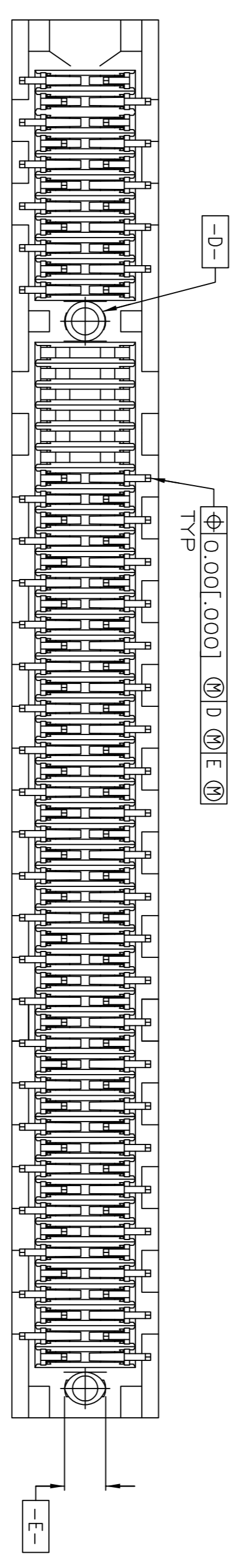
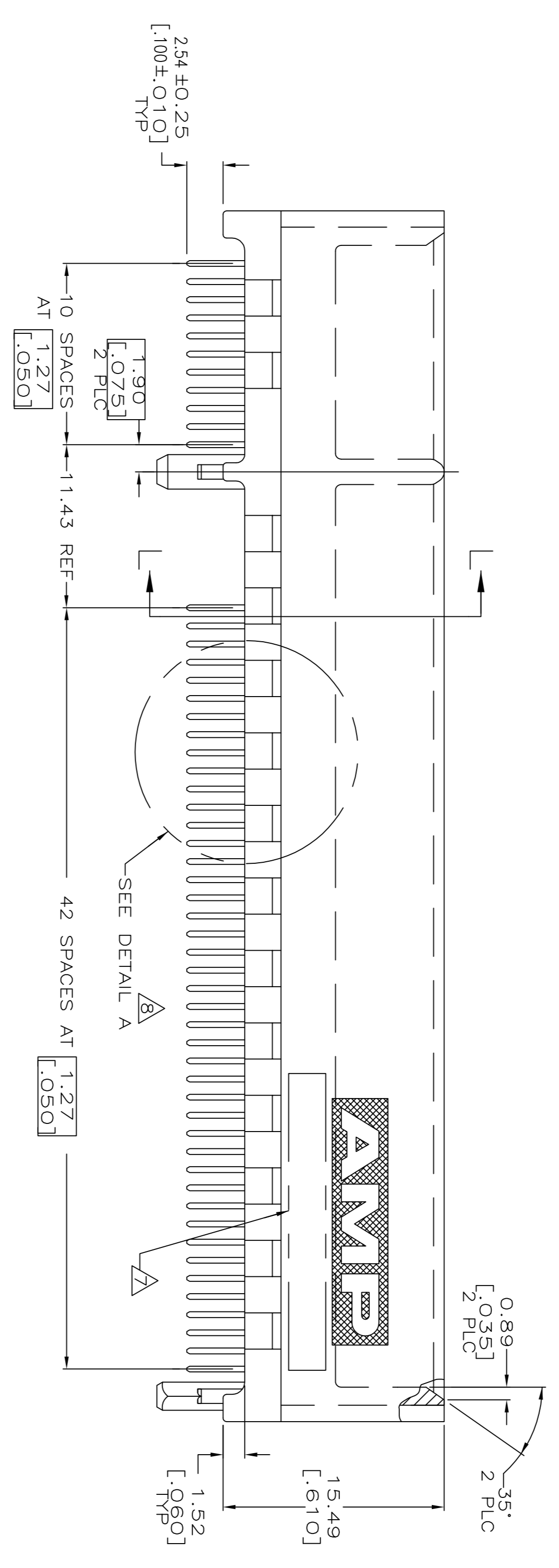
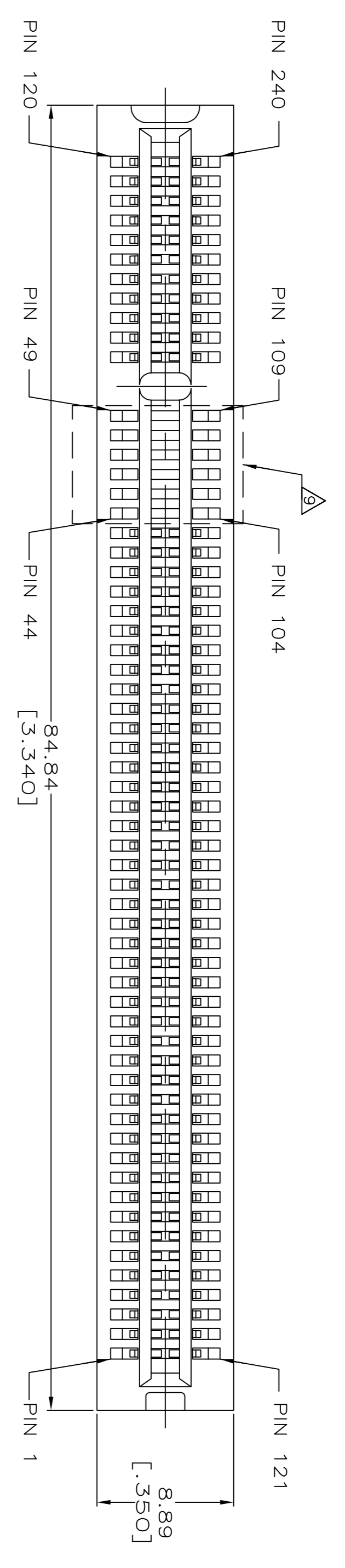
PRODUCT SPEC: 108-14034  
 APPLICATION SPEC: 114-26012

CONNECTOR ASSEMBLY,  
 60 DUAL POSITION,  
 1.27 [0.050] SERIES, CARD EDGE

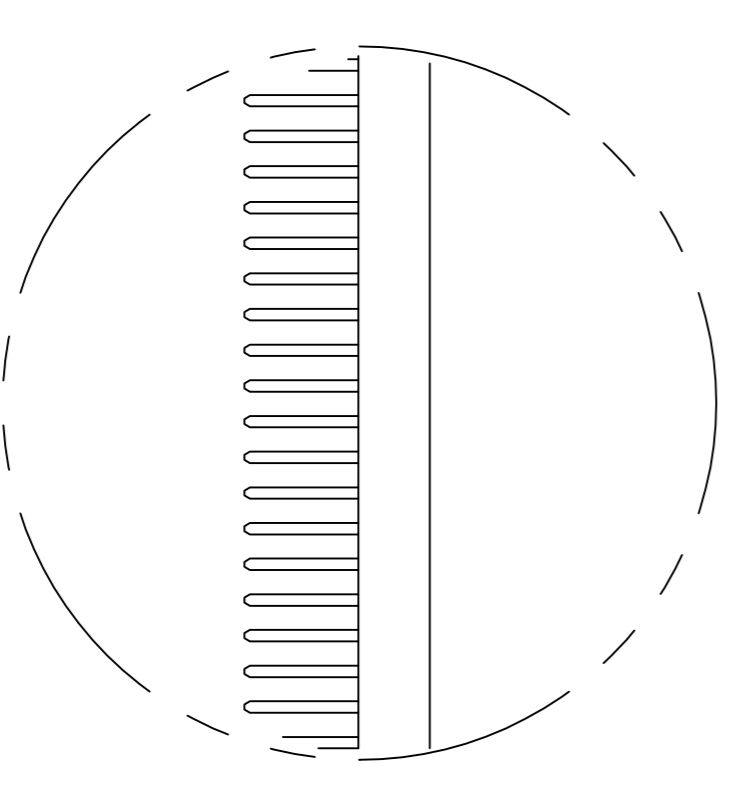
SIZE: A1  
 DATE CODE: 00779  
 DRAWING NO: 5145154

CUSTOMER DRAWING

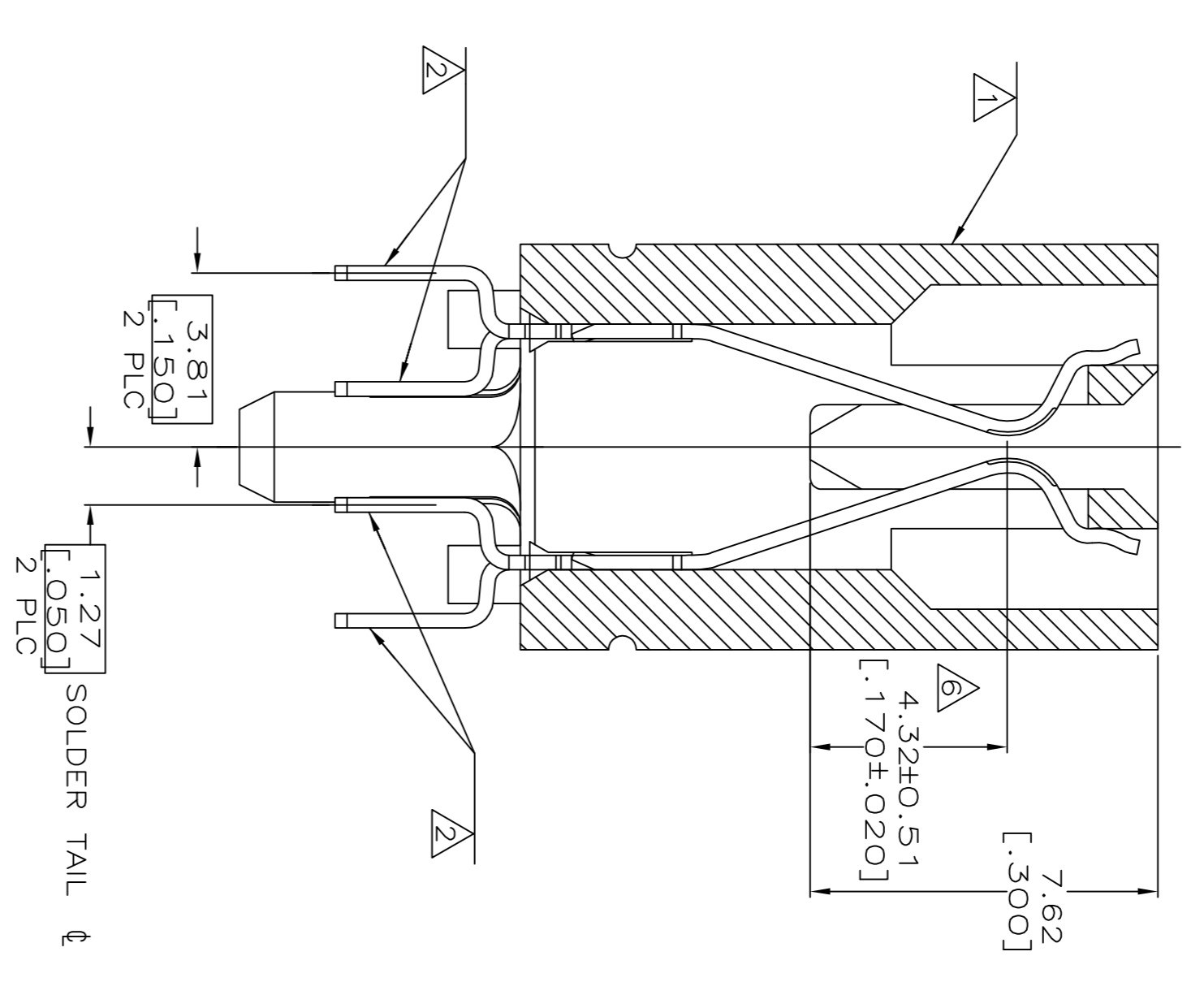
SCALE: 4:1 SHEET: 2 OF 4 REV: C1



SEE SHEET 4 FOR HOLE PATTERN



DETAIL A



SECTION L-L  
SCALE 8:1

SELECT LOADED TYPE AS SHOWN.

THIS DRAWING IS A CONTROLLED DOCUMENT.		REV	DATE	BY	DESCRIPTION
DIMENSIONS mm (INCHES)		01	11/14/04	AV	FRANTUM
OTHER DIMENSIONS mm (INCHES)		02	11/14/04	AV	FRANTUM
FINISH		03	11/14/04	AV	FRANTUM
MATERIAL		04	11/14/04	AV	FRANTUM
CONNECTOR ASSEMBLY, 60 DUAL POSITION, 1.27 [.050] SERIES, CARD EDGE		05	11/14/04	AV	FRANTUM
CUSTOMER DRAWING		06	11/14/04	AV	FRANTUM
SCALE 4:1		07	11/14/04	AV	FRANTUM
SHEET 3 OF 4		08	11/14/04	AV	FRANTUM
REV D		09	11/14/04	AV	FRANTUM

