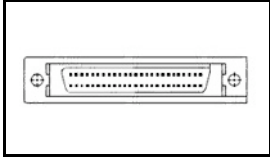


## 5174339-4 Product Details

[Share](#) [Print](#) [Email](#)




5174339-4

TE Internal Number: 5174339-4

 Active

[View 3D PDF](#)

### .050 Series Board Mount Connectors

 Always EU RoHS/ELV Compliant  
(Statement of Compliance)

#### Product Highlights:

- Connector
- Connector Style = Plug
- 50 Positions
- PCB Mounting Orientation = Vertical
- Termination Method to PC Board = Through Hole - Solder

[View all Features](#)

### Quick Links

- ▶ [Pricing & Availability](#)
- ▶ [Search for Tooling](#)
- ▶ [Product Feature Selector](#)
- ▶ [Contact Us About This Product](#)

[Add to My Part List](#)

[Request Sample](#)

[Find Similar Products](#)

[Buy Product](#)

### Documentation & Additional Information

#### Product Drawings:

- [CAP HEADER \(VERTICAL/M2.5\) AMPLIMITE .050 SERIES II ...](#) (PDF, English)

#### Catalog Pages/Data Sheets:

- None Available

#### Product Specifications:

- None Available

#### Application Specifications:

- None Available

#### Instruction Sheets:

- None Available

#### CAD Files: (CAD Format & Compression Information)

- [2D Drawing](#) (DXF, Version B1)
- [3D Model](#) (IGES, Version B1)
- [3D Model](#) (STEP, Version B1)

[List all Documents](#)

#### Additional Information:

- [Product Line Information](#)

#### Related Products:

- [Tooling](#)

### Product Features (Please use the Product Drawing for all design activity)

#### Product Type Features:

- [Product Type](#) = Connector
- [PCB Mounting Orientation](#) = Vertical
- [PCB Mount Retention](#) = With
- [PCB Mount Retention Type](#) = Boardlock(s)
- [PCB Mount Alignment](#) = Without
- [Shell Type](#) = Full Metal
- [Product Series](#) = Series II
- [Post Plate Material](#) = Thermoplastic

#### Termination Features:

- [Termination Method to PC Board](#) = Through Hole - Solder
- [Termination Post Length \(mm \[in\]\)](#) = 3.10 [0.122]

#### Body Features:

- [Mating Retention](#) = Without

#### Contact Features:

- [Contact Plating, Mating Area, Material](#) = Gold Flash
- [Contact Base Material](#) = Phosphor Bronze

#### Housing Features:

- [Connector Style](#) = Plug
- [Mating Alignment](#) = Without
- [Centerline \(mm \[in\]\)](#) = 1.27 [0.050]
- [Housing Material](#) = Thermoplastic - GF

#### Configuration Features:

- [Number of Positions](#) = 50
- [Shielded](#) = Yes

#### Industry Standards:

- [RoHS/ELV Compliance](#) = RoHS compliant, ELV compliant

- Post Plating = Tin over Nickel
- Shell Material = Zinc Die Cast
- Shell Plating = Nickel over Copper
- Retention Leg Material = Nickel
- Retention Leg Plating = Brass

- [Lead Free Solder Processes](#) = Wave solder capable to 260°C, Wave solder capable to 240°C, Wave solder capable to 265°C
- RoHS/ELV Compliance History = Always was RoHS compliant
- UL Flammability Rating = UL 94V-0
- Post Plate Flammability Rating = UL 94V-0

**Other:**

- Brand = AMP

**Corporate Information**

- [About TE](#)
- [Investors](#)
- [News Room](#)
- [Supplier Portal](#)
- [Careers](#)
- [Terms & Conditions](#)
- [Privacy Policy](#)
- [AODA Accessibility Policy](#)
- [AODA Multi-Year Accessibility Plan](#)

**Quick Links**

- [Distributor Inventory](#)
- [Product Cross Reference](#)
- [Documents & Drawings](#)
- [Product Compliance Support Center](#)
- [Site Map](#)

**Customer Support**

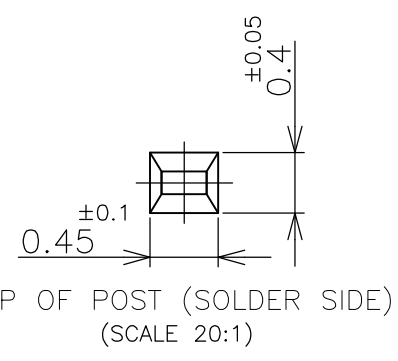
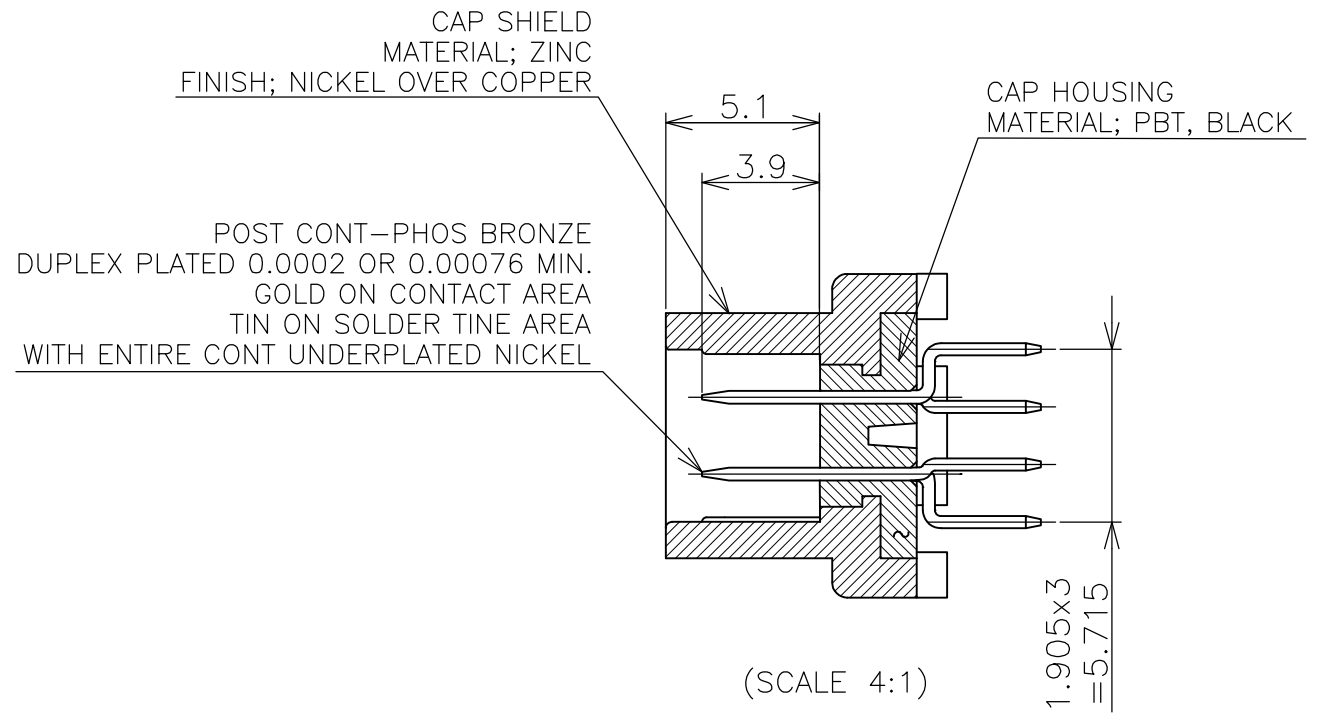
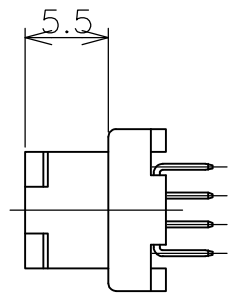
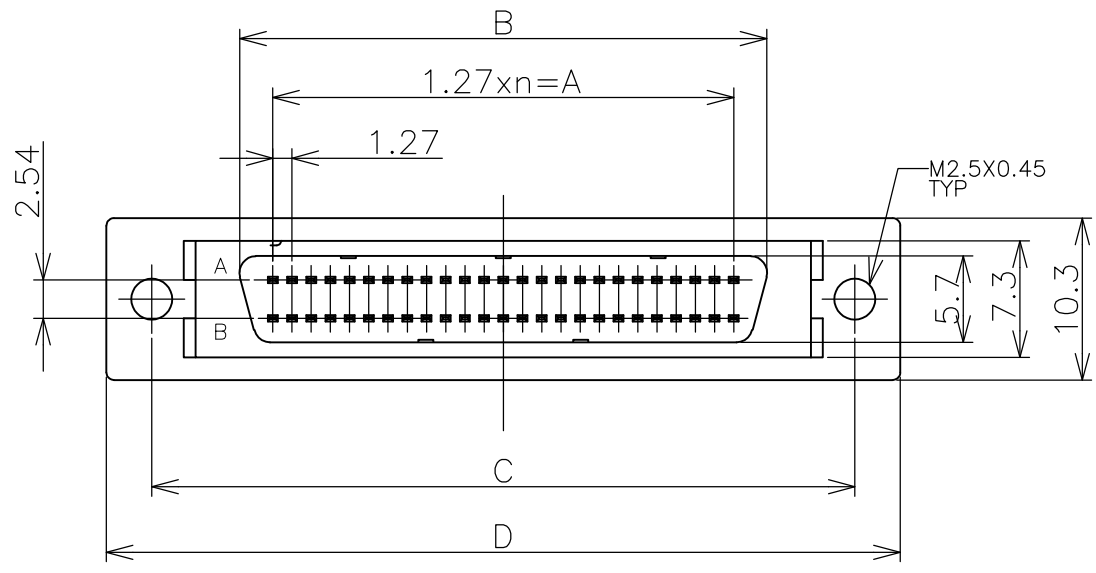
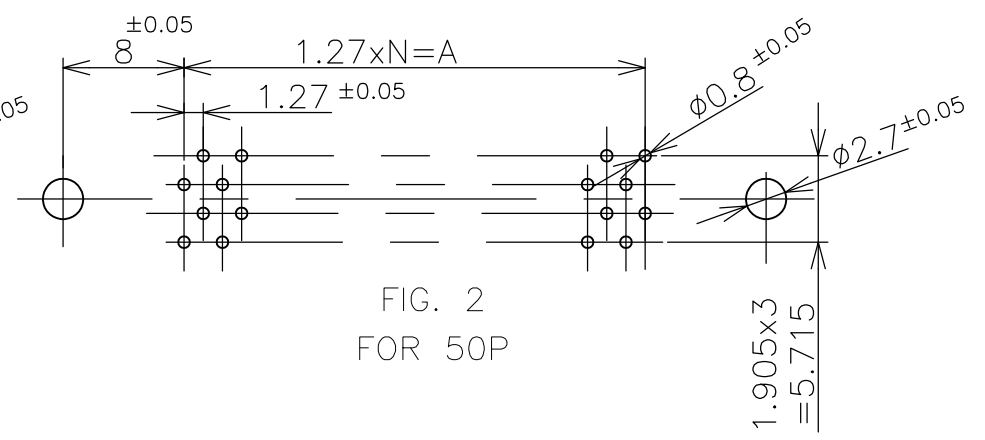
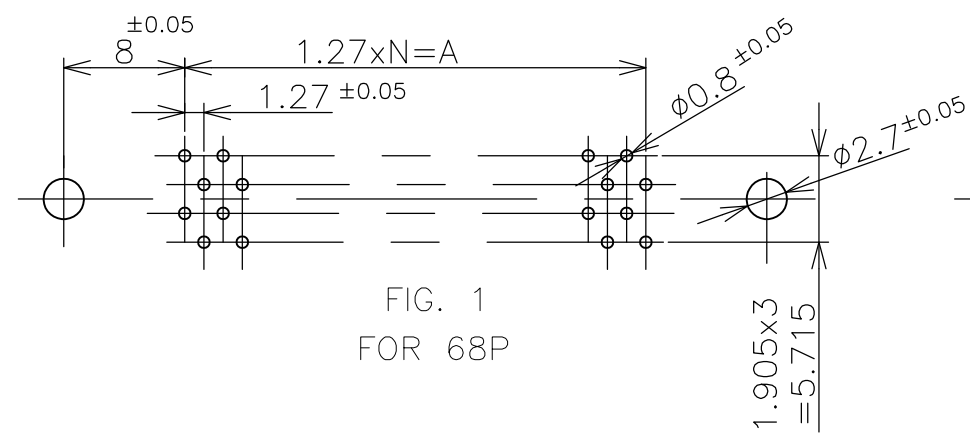
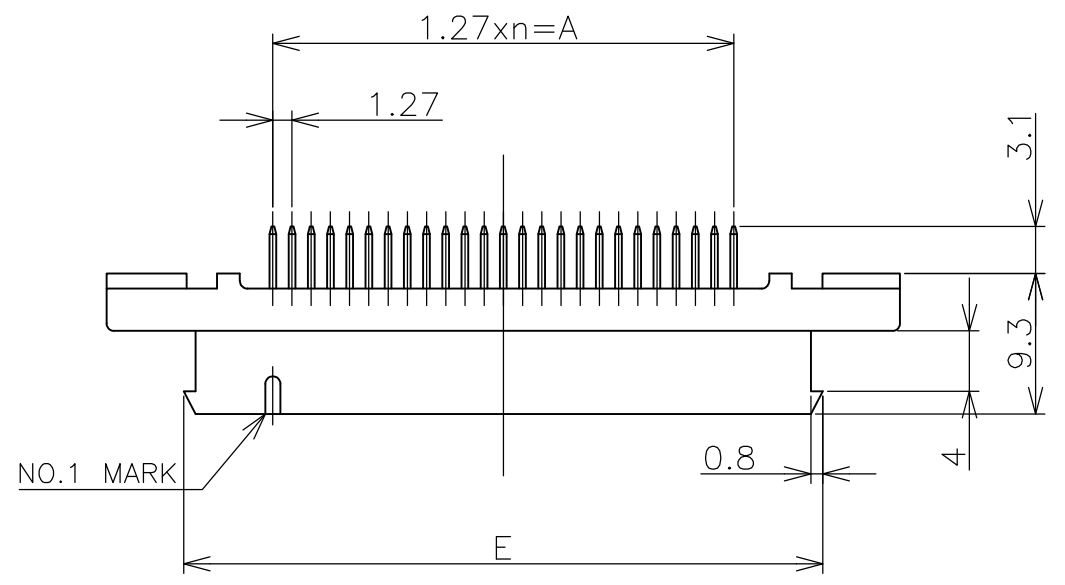
- [Email or Chat With Us](#)
- [Find a Phone Number](#)
- [Knowledge Base](#)
- [Manage Your Account](#)

**Keep Me Informed**



THIS DRAWING IS UNPUBLISHED. RELEASED FOR PUBLICATION MAY, 1989.  
 © COPYRIGHT 1989 By - ALL RIGHTS RESERVED.

LOC	DIST	REVISIONS					
J		P	LTR	DESCRIPTION	DATE	DWN	APVD
			B2	REVISED PER ECO-11-005033	25MAR11	RK	HMR



- 1 P.C BOARD HOLE LAY-OUT AS SHOWN FIG.1 & 2.
- 2 USED SCREW; M2.5x0.45 PANHEAD SCREW.

GENERAL TOLERANCE 10 ≥ : ±0.2 30 ≥ > 10: ±0.25 100 ≥ > 30: ±0.3 ANGLES: ±3°	68	33	41.91	46.28	57.9	63.9	53.71	0.00076 MIN	2-5174339-5
	50	24	30.48	34.85	46.5	52.5	42.28		2-5174339-4
	68	33	41.91	46.28	57.9	63.9	53.71	0.0002 MIN	5174339-5
	50	24	30.48	34.85	46.5	52.5	42.28		5174339-4
	POS	N	A	B	C	D	E	GOLD THK	PART NO.
THIS DRAWING IS A CONTROLLED DOCUMENT.		DWN Roy hao 17Aug04		TE Connectivity CAP HEADER (VERTICAL/M2.5) AMPLIMITE .050 SERIES II CONN. TYPE B					
DIMENSIONS: mm		CHK Steven Yao 17Aug04							
TOLERANCES UNLESS OTHERWISE SPECIFIED:		APVD I.Enomoto 17Aug04							
0 PLC ± - 1 PLC ± - 2 PLC ± - 3 PLC ± - 4 PLC ± - ANGLES ± - FINISH ± -		PRODUCT SPEC 108-60037-1 APPLICATION SPEC							
MATERIAL SEE ABOVE		WEIGHT		SIZE	CAGE CODE	DRAWING NO		RESTRICTED TO	
		CUSTOMER DRAWING		A3	00779	C-5174339			
		SCALE		SHEET		REV			
		1:1		1 OF 1		B2			