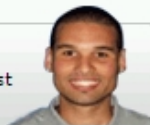


## 5212044-1 Product Details

### Have a Question?

Chat with a Product Information Specialist



**5212044-1**

TE Internal Number: 5212044-1

Active

[View 3D PDF](#)

### Shielded Circular DIN Connectors

[Always EU RoHS/ELV Compliant \(Statement of Compliance\)](#)

#### Product Highlights:

- Connector
- Housing
- Preloaded
- Housing Gender = Receptacle
- Contact Gender = Receptacle

[View all Features](#)

### Quick Links

- ▶ [Check Pricing & Availability](#)
- ▶ [Search for Tooling](#)
- ▶ [Product Feature Selector](#)
- ▶ [Contact Us About This Product](#)

[Add to My Part List](#) [Request Sample](#) [Find Similar Products](#) [Buy Product](#)

### Documentation & Additional Information

#### Product Drawings:

- [RECEPTACLE ASSEMBLY, 90 DEGREE PCB, 5 POSITION, W/SH...](#) (PDF, English)

#### Catalog Pages/Data Sheets:

- None Available

#### Product Specifications:

- [Connector, Circular DIN](#) (PDF, English)

#### Application Specifications:

- [Circular DIN Standard and Shielded Connectors and Co...](#) (PDF, English)

#### Instruction Sheets:

- None Available

#### CAD Files: ([CAD Format & Compression Information](#))

- [2D Drawing](#) (DXF, Version 0)
- [3D Model](#) (IGES, Version 0)
- [3D Model](#) (STEP, Version 0)

[List all Documents](#)

#### Additional Information:

- [Product Line Information](#)

#### Related Products:

- [Tooling](#)

### Product Features (Please use the Product Drawing for all design activity)

#### Product Type Features:

- [Product Type](#) = Connector
- Connector Type = Housing
- [Mounting Holes](#) = Without
- Comment = For applications requiring a 3-position connector, use a 5-position connector (contact positions 4 and 5 not used).

#### Electrical Characteristics:

- [Shielded](#) = Yes

#### Body Related Features:

- [Grounding Fingers](#) = Without
- [Number of Positions](#) = 5

#### Contact Related Features:

- Preloaded = Yes
- Contact Gender = Receptacle
- Contact Base Material = Brass
- Contact Plating, Mating Area, Material = Tin

#### Housing Related Features:

- Housing Gender = Receptacle
- Housing Material = Nylon
- Housing Color = Black
- UL Flammability Rating = UL 94V-0

#### Industry Standards:

- [RoHS/ELV Compliance](#) = RoHS compliant, ELV compliant
- [Lead Free Solder Processes](#) = Wave solder capable to 240°C, Wave solder capable to 260°C, Wave solder capable to 265°C
- RoHS/ELV Compliance History = Always was RoHS compliant

#### Other:

- Brand = AMP

BOOKMARK

### Corporate Information

[Who We Are](#)  
[Investors](#)  
[News Room](#)  
[Supplier Portal](#)  
[Careers](#)

### Quick Links

[Check Distributor Inventory](#)  
[Cross Reference](#)  
[Find Documents & Drawings](#)  
[Product Compliance Support Center](#)  
[Site Map](#)

### Customer Support

[Email or Chat with Us](#)  
[Find a Phone Number](#)  
[Search Knowledge Base](#)  
[Manage Your Account](#)

### Sign up for our eNewsletter

Enter your email address

Follow us on:

