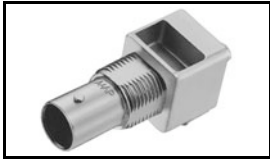


5222092-1 Product Details

[Share](#) [Print](#) [Email](#)




5222092-1

TE Internal Number: 5222092-1

 Active

[View 3D PDF](#)

BNC RF Connectors

 Always EU RoHS/ELV Compliant
(Statement of Compliance)

Product Highlights:

- Connector - RF
- Jack
- Connector Style = Jack
- Applies To Printed Circuit Board
- PCB Mounting Orientation = Right Angle

[View all Features](#)

Quick Links

- ▶ [Pricing & Availability](#)
- ▶ [Search for Tooling](#)
- ▶ [Product Feature Selector](#)
- ▶ [Contact Us About This Product](#)

[Add to My Part List](#)

[Request Sample](#)

[Find Similar Products](#)

[Buy Product](#)

Documentation & Additional Information

Product Drawings:

- [JACK, RIGHT ANGLE, PCB 75 OHM, SERIES BNC](#) (PDF, English)

Catalog Pages/Data Sheets:

- [BNC Connectors](#) (PDF, English)

Product Specifications:

- [BNC PCB Straight and Right Angle Connectors](#) (PDF, English)

Application Specifications:

- None Available

Instruction Sheets:

- None Available

CAD Files: (CAD Format & Compression Information)

- [2D Drawing](#) (DXF, Version A)
- [3D Model](#) (IGES, Version A)
- [3D Model](#) (STEP, Version A)

[List all Documents](#)

Related Products:

- [Tooling](#)

Product Features (Please use the Product Drawing for all design activity)

Product Type Features:

- [Product Type](#) = Connector - RF
- [Gender](#) = Jack
- [PCB Mounting Orientation](#) = Right Angle
- [Grade](#) = Commercial
- [PCB Mount Retention](#) = With
- [PCB Mount Retention Type](#) = Hold Down Post(s)
- [Mounting Post Style](#) = Standard
- [Sealed](#) = No
- [Isolated](#) = No
- [Dielectric Material](#) = Polymethylpentene

Mechanical Attachment:

- [Surface Mountable](#) = No
- [Hardware Included](#) = No
- [Panel Mount Retention](#) = With
- [Panel Mount Retention Type](#) = Lockwasher and Nut
- [Panel Attachment Style](#) = Rear Mount

Contact Features:

- [Center Contact Material](#) = Beryllium Copper
- [Center Contact Plating](#) = Gold (30)

Housing Features:

- [Connector Style](#) = Jack

Configuration Features:

- [Number of Ports](#) = 1
- [Solder Terminal](#) = Without

Industry Standards:

- [Government/Industry Qualification](#) = No
- [RoHS/ELV Compliance](#) = RoHS compliant, ELV compliant
- [Lead Free Solder Processes](#) = Wave solder capable to 240°C, Wave solder capable to 260°C, Wave solder capable to 265°C
- [RoHS/ELV Compliance History](#) = Always was RoHS

<p>Electrical Characteristics:</p> <ul style="list-style-type: none"> Connector Impedance (Ω) = 75 <p>Dimensions:</p> <ul style="list-style-type: none"> PCB Height (mm [in]) = 15.88 [0.625] Mounting Post Length (mm [in]) = 2.16 [0.085] <p>Body Features:</p> <ul style="list-style-type: none"> Body Material = Zinc Body Plating = Nickel Body Insulation = Without Polarized = No 	<p>compliant</p> <p>Conditions for Usage:</p> <ul style="list-style-type: none"> Applies To = Printed Circuit Board <p>Other:</p> <ul style="list-style-type: none"> Brand = AMP Comment = If an Insulating Bushing is required, see Part Number 330620.
--	---

Corporate Information

- [About TE](#)
- [Investors](#)
- [News Room](#)
- [Supplier Portal](#)
- [Careers](#)
- [Terms & Conditions](#)
- [Privacy Policy](#)

Quick Links

- [Distributor Inventory](#)
- [Product Cross Reference](#)
- [Documents & Drawings](#)
- [Product Compliance Support Center](#)
- [Site Map](#)

Customer Support

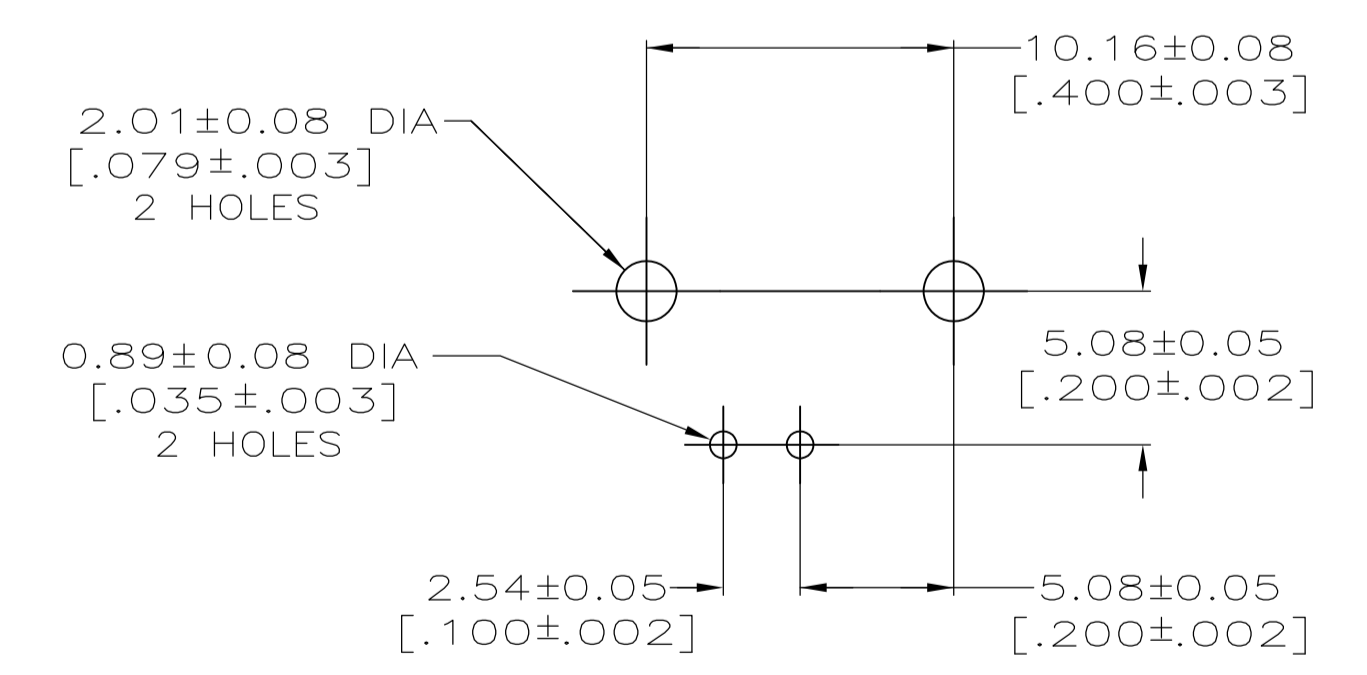
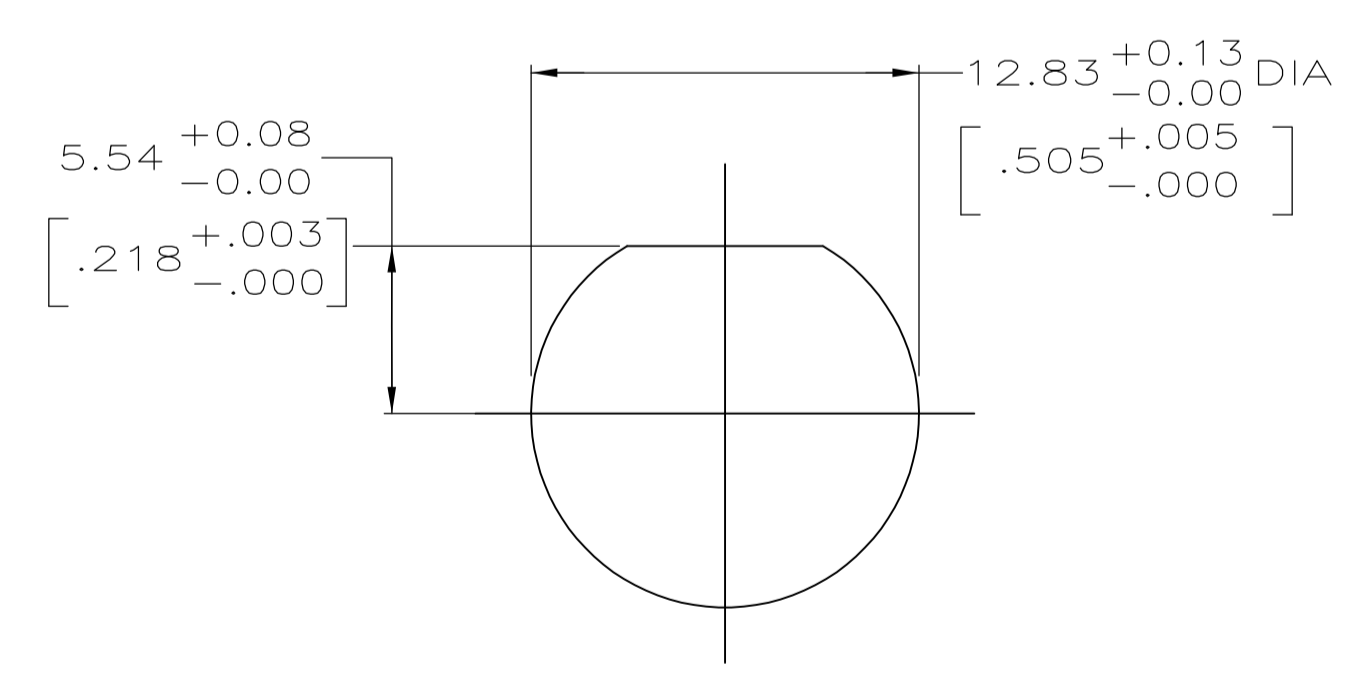
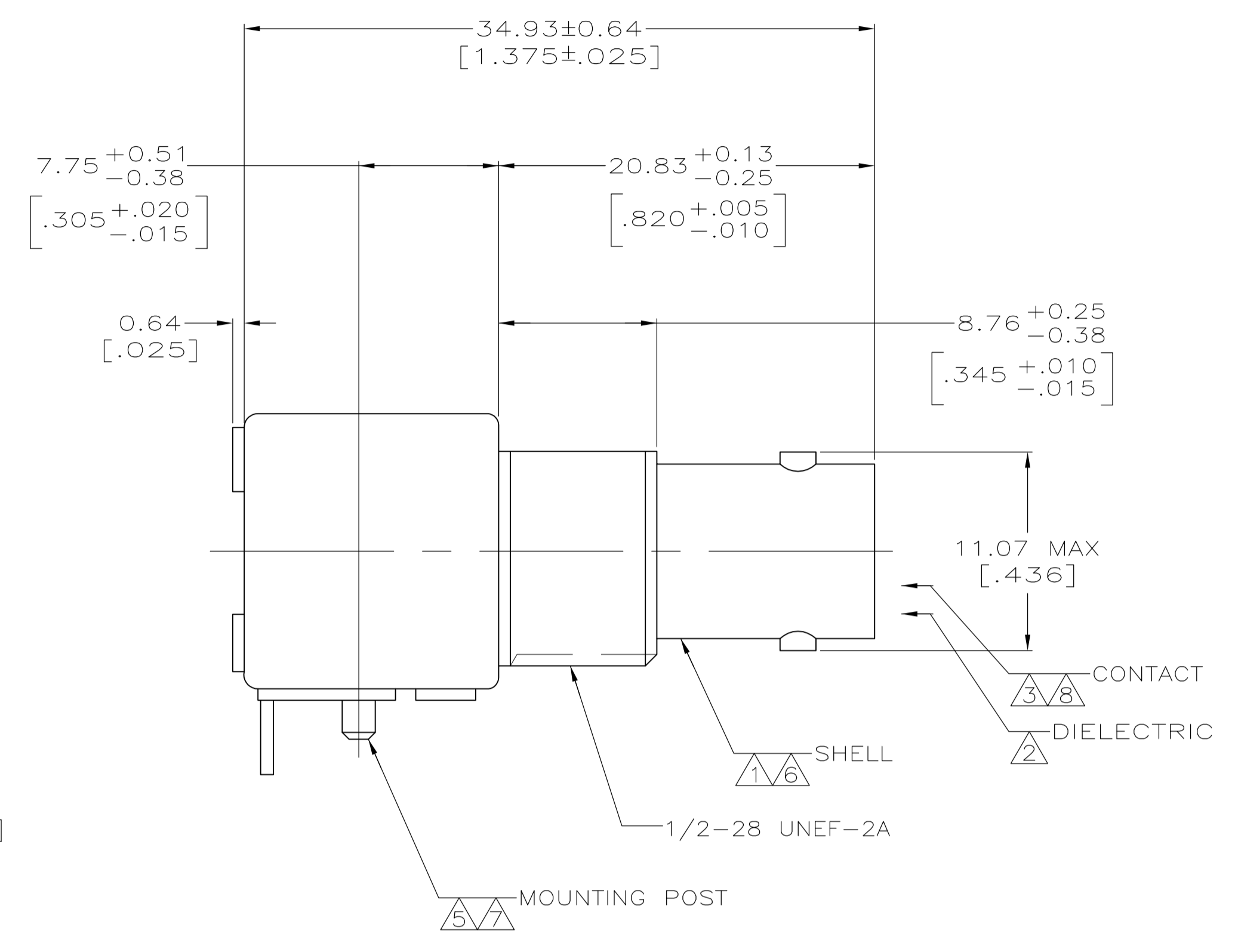
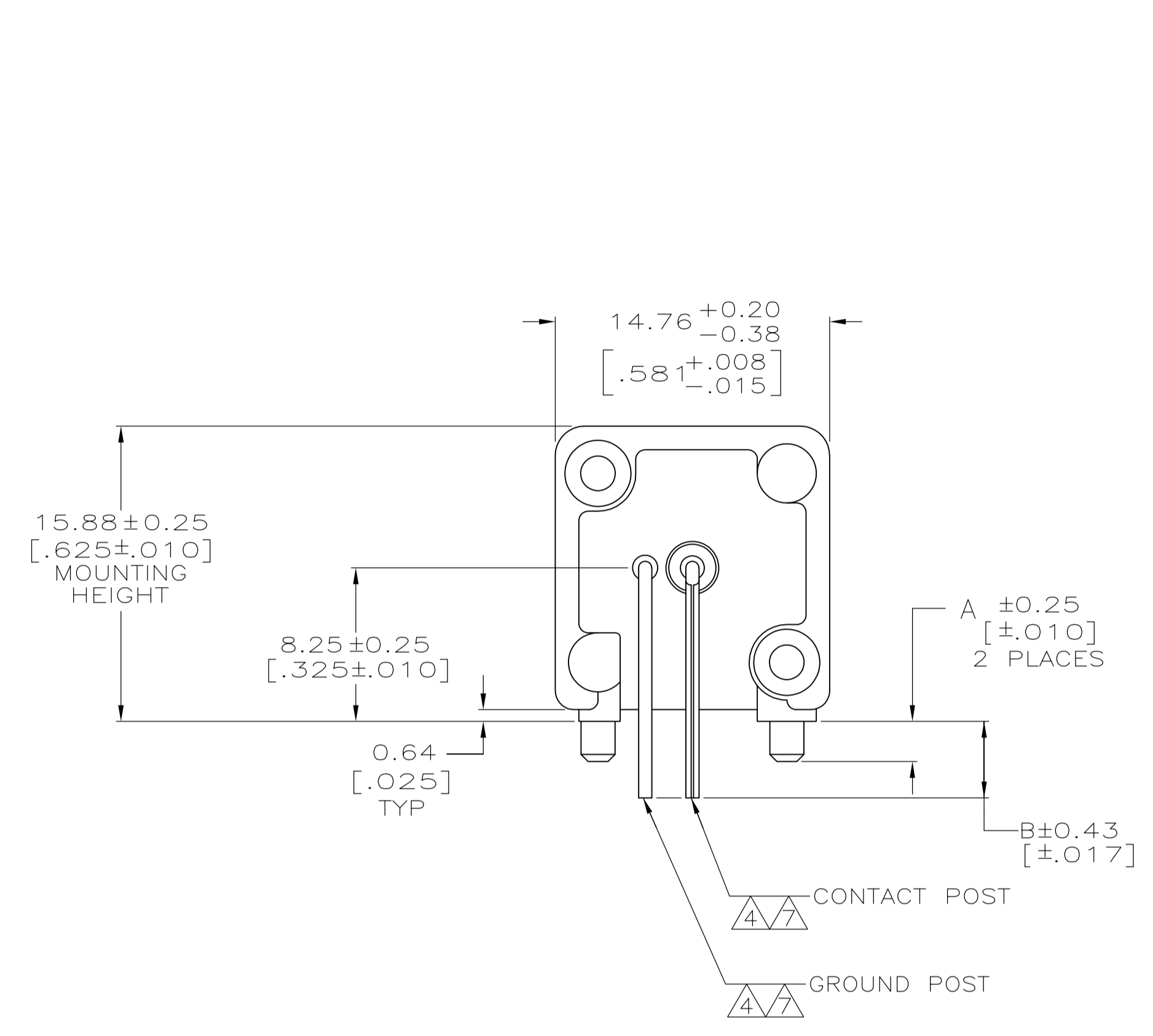
- [Email or Chat With Us](#)
- [Find a Phone Number](#)
- [Knowledge Base](#)
- [Manage Your Account](#)

Keep Me Informed



LOC	DIST	REVISIONS			
REV	DATE	DESCRIPTION	DATE	BY	APPV
AJ	16	A1	REVISED PER ECO-11-005030	11MAR11	RK HMR

- 1 ZINC PER QQ-Z-363.
- 2 POLYMETHYLPENTENE, GENERAL PURPOSE.
- 3 BERYLLIUM COPPER PER QQ-C-530.
- 4 BRASS PER ASTM-B-453.
- 5 BRASS PER ASTM-B-16.
- 6 NICKEL PLATE PER QQ-N-290, 3.81 μm [.000150] MINIMUM THICK.
- 7 TIN PLATE PER ASTM-B-545, 3.81 μm [.000150] MINIMUM THICK.
- 8 GOLD PLATE PER MIL-G-45204, 0.76 μm [.000030] MINIMUM THICK.
- 9. SEE INSTRUCTION SHEET 408-2769.



4.11 [.162]	3.48 [.137]	5222092-3
4.11 [.162]	2.16 [.085]	5222092-1
B	A	PART NUMBER

THIS DRAWING IS A CONTROLLED DOCUMENT.		DIN J. ALCORTA - 21APR2005		STE TE Connectivity	
DIMENSIONS: mm (INCHES)		CHK J. HAVENER 21APR2005		NAME	
TOLERANCES UNLESS OTHERWISE SPECIFIED:		APVD J. LIPPERT 21APR2005		PRODUCT SPEC	
0 PLC \pm -		APPLICATION SPEC		SIZE CAGE CODE DRAWING NO	
1 PLC \pm -		RESTRICTED TO		WEIGHT	
2 PLC \pm 0.20 [.008]		A1 00779 C=5222092		SCALE 4:1 SHEET 1 OF 1 REV A1	
3 PLC \pm -		CUSTOMER DRAWING		SCALE 4:1 SHEET 1 OF 1 REV A1	
4 PLC \pm -					
ANGLES \pm -					
MATERIAL SEE NOTES 1-5		FINISH SEE NOTES 6-8			