



Have a Question?
 Chat with a Product Information Specialist

What can we help you find?

[Products](#) [Industries](#) [Resources](#) [About TE](#) [My Account](#) [Innovation](#) [Support Center](#)

5227426-1 Product Details

[Share](#) [Print](#) [Email](#)



5227426-1

TE Internal Number: 5227426-1

Active

[View 3D PDF](#)

BNC RF Connectors

Always EU RoHS/ELV Compliant (Statement of Compliance)

Product Highlights:

- Connector - RF
- Jack
- Connector Style = Jack
- Applies To Wire/Cable
- Body Style = Straight

[View all Features](#)

Quick Links

- [Pricing & Availability](#)
- [Search for Tooling](#)
- [Product Feature Selector](#)
- [Contact Us About This Product](#)

[Add to My Part List](#) [Request Sample](#) [Find Similar Products](#) [Buy Product](#)

Documentation & Additional Information	
<p>Product Drawings:</p> <ul style="list-style-type: none"> • SOLDER RECEPTACLE, SEALED, JACK, SERIES BNC (PDF, English) <p>Catalog Pages/Data Sheets:</p> <ul style="list-style-type: none"> • BNC Connectors (PDF, English) <p>Product Specifications:</p> <ul style="list-style-type: none"> • None Available <p>Application Specifications:</p> <ul style="list-style-type: none"> • None Available <p>Instruction Sheets:</p> <ul style="list-style-type: none"> • None Available <p>CAD Files: (CAD Format & Compression Information)</p> <ul style="list-style-type: none"> • 2D Drawing (DXF, Version A) • 3D Model (IGES, Version A) • 3D Model (STEP, Version A) 	<p>Related Products:</p> <ul style="list-style-type: none"> • Tooling

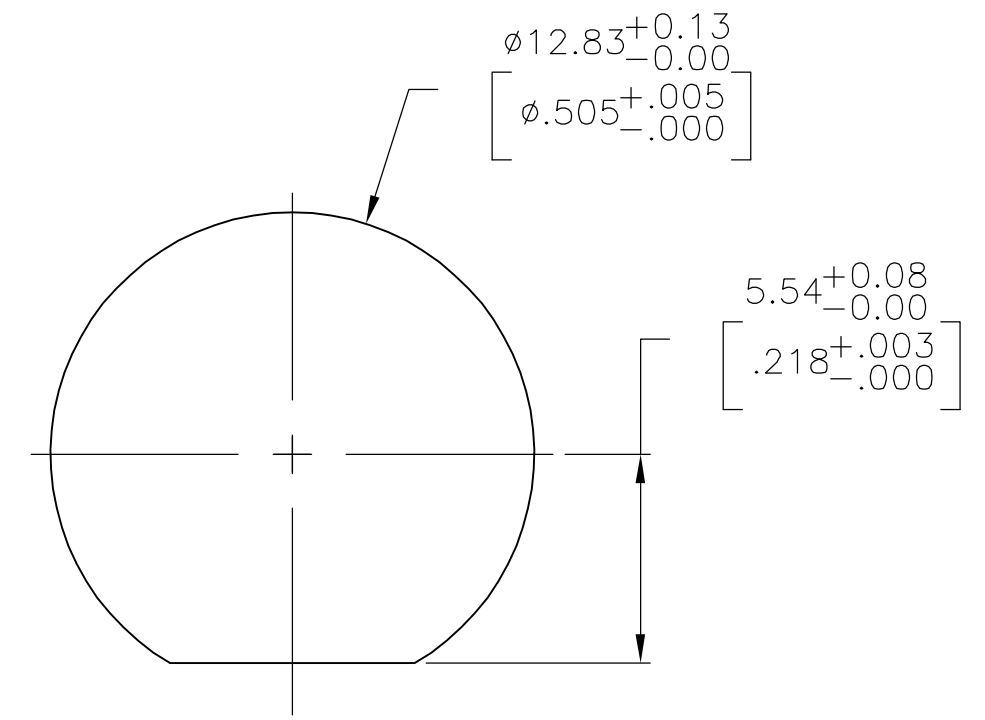
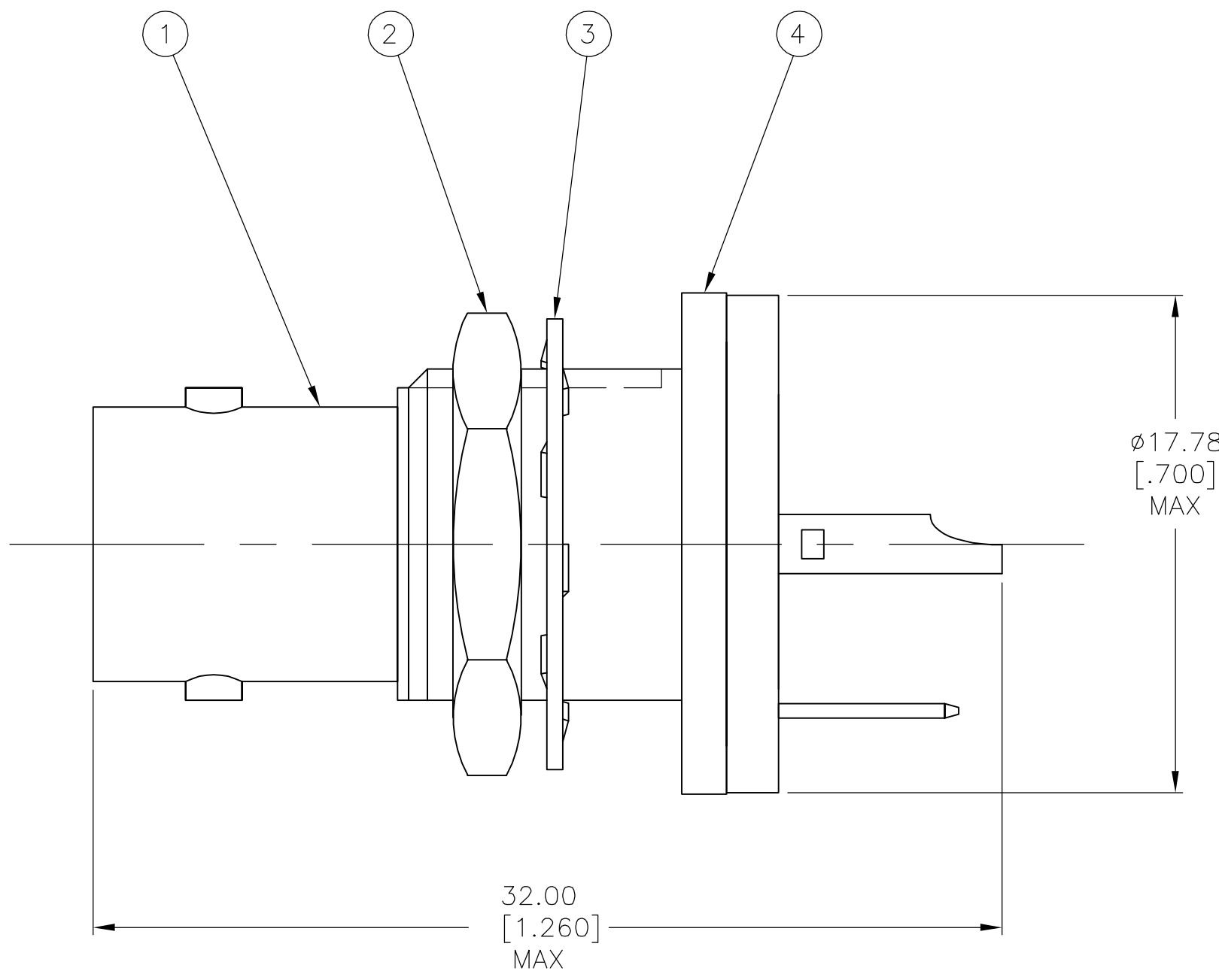
[List all Documents](#)

Product Features (Please use the Product Drawing for all design activity)	
<p>Product Type Features:</p> <ul style="list-style-type: none"> • Product Type = Connector - RF • Gender = Jack • Grade = Commercial • Sealed = Yes • Isolated = No • Dielectric Material = Polymethylpentene • Solder Terminal = Without <p>Mechanical Attachment:</p> <ul style="list-style-type: none"> • Surface Mountable = No • Hardware Included = No • Panel Mount Retention = With • Panel Mount Retention Type = Bulkhead • Panel Attachment Style = Rear Mount <p>Electrical Characteristics:</p> <ul style="list-style-type: none"> • Connector Impedance (Ω) = 50 <p>Body Features:</p> <ul style="list-style-type: none"> • Body Style = Straight • Body Plating = Nickel • Body Insulation = Without • Polarized = No • Wire Diameter Range (mm [in]) = 1.50 [0.059] 	<p>Contact Features:</p> <ul style="list-style-type: none"> • Center Contact Material = Phosphor Bronze • Center Contact Plating = Gold <p>Housing Features:</p> <ul style="list-style-type: none"> • Connector Style = Jack <p>Configuration Features:</p> <ul style="list-style-type: none"> • Number of Ports = 1 <p>Industry Standards:</p> <ul style="list-style-type: none"> • Government/Industry Qualification = No • RoHS/ELV Compliance = RoHS compliant, ELV compliant • Lead Free Solder Processes = Hand solderable with lead free solder • RoHS/ELV Compliance History = Always was RoHS compliant <p>Conditions for Usage:</p> <ul style="list-style-type: none"> • Applies To = Wire/Cable <p>Other:</p> <ul style="list-style-type: none"> • Brand = AMP

THIS DRAWING IS UNPUBLISHED. RELEASED FOR PUBLICATION
 © COPYRIGHT BY TYCO ELECTRONICS CORPORATION. ALL RIGHTS RESERVED.

LOC	DIST	REVISIONS			
P	LTR	DESCRIPTION	DATE	DWN	APVD
	A	REVISED PER OS14-0150-05.	28OCT2005	REH	JL

1. PANEL THICKNESS: 6.35 [.250] MAX.



RECOMMENDED
PANEL CUTOUT

QTY	DESCRIPTION	PART NUMBER	ITEM
1	GASKET	227431-1	4
1	LOCKWASHER	1-329632-2	3
1	JAM NUT	1-329631-2	2
1	SOLDER RECPT.	227427-1	1
-1	DESCRIPTION	PART NUMBER	ITEM

THIS DRAWING IS A CONTROLLED DOCUMENT.		DWN J. HAVENER 120CT2005	Tyco Electronics Corporation Harrisburg, PA 17105-3608	
DIMENSIONS: mm [INCHES]		CHK J. HAVENER 120CT2005		
TOLERANCES UNLESS OTHERWISE SPECIFIED:		APVD J. LIPPERT 120CT2005	NAME SOLDER RECEPTACLE, SEALED, JACK, SERIES BNC	
0 PLC ± - 1 PLC ± - 2 PLC ± - 3 PLC ± - 4 PLC ± - ANGLES ± -		PRODUCT SPEC -		
MATERIAL -		FINISH -	APPLICATION SPEC -	RESTRICTED TO -
		WEIGHT -	SIZE A3	CAGE CODE 00779
			DRAWING NO C-5227426	
		CUSTOMER DRAWING	SCALE 5:1	SHEET 1 OF 1
				REV A