



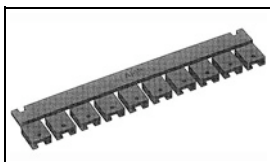
Have a Question?
 Chat with a Product
 Information Specialist

What can we help you find?

[Products](#) [Industries](#) [Resources](#) [About TE](#) [My Account](#) [Innovation](#) [Support Center](#)

531230-2 Product Details

[Share](#) [Print](#) [Email](#)



531230-2

TE Internal Number: 531230-2

Active

[View 3D PDF](#)

Post Shunts

Always EU RoHS/ELV Compliant (Statement of Compliance)

Product Highlights:

- Shunt
- Shunt Type = Standard Housing
- 2 Positions
- 5.08 mm Centerline
- Gold (15) Contact Plating, Mating Area, Material

[View all Features](#)

Quick Links

- ▶ [Pricing & Availability](#)
- ▶ [Search for Tooling](#)
- ▶ [Product Feature Selector](#)
- ▶ [Contact Us About This Product](#)

[Add to My Part List](#) [Request Sample](#) [Find Similar Products](#) [Buy Product](#)

Documentation & Additional Information

Product Drawings:

- [LOW PROFILE SHUNT CONNECTOR 5.08 \[.200\] CL \(PDF, English\)](#)

Catalog Pages/Data Sheets:

- [AMPMODU_INTERCONNECTION_SYSTEM_SECTION_6_7AND8 \(PDF, English\)](#)

Product Specifications:

- [Low Profile Shunt Connector \(PDF, English\)](#)

Application Specifications:

- [Low Profile, Economy, Dual Beam, and Multiposition Sh... \(PDF, English\)](#)

Instruction Sheets:

- [Low Profile, Economy, and Dual Beam Shunt Connectors... \(PDF, English\)](#)

CAD Files: (CAD Format & Compression Information)

- [2D Drawing \(DXF, Version F1\)](#)
- [3D Model \(IGES, Version F1\)](#)
- [3D Model \(STEP, Version F1\)](#)

[List all Documents](#)

Additional Information:

- [Product Line Information](#)

Related Products:

- [Tooling](#)

Product Features (Please use the Product Drawing for all design activity)

Product Type Features:

- Product Type = Shunt
- [Shunt Type](#) = Standard Housing
- [Shunt Style](#) = Open Top
- Profile = Low

Electrical Characteristics:

- Contact - Rated Current (A) = 3
- Dielectric Withstanding Voltage (V) = 1000
- Insulation Resistance (MΩ) = 1,000

Dimensions:

- Height (mm [in]) = 6.35 [0.250]

Body Features:

- Handle = Without

Contact Features:

- Contact Plating, Mating Area, Material = Gold (15)
- Contact Base Material = Beryllium Copper

Housing Features:

- [Centerline \(mm \[in\]\)](#) = 5.08 [0.200]
- Housing Color = Black
- Housing Material = Polyester GF
- UL Flammability Rating = UL 94V-0

Configuration Features:

- [Number of Positions](#) = 2

Industry Standards:

- [RoHS/ELV Compliance](#) = RoHS compliant, ELV compliant
- [Lead Free Solder Processes](#) = Not relevant for lead free process
- RoHS/ELV Compliance History = Always was RoHS compliant
- UL Rating = Recognized
- CSA Certified = Yes

Conditions for Usage:

- Temperature Range (°C) = -65 - +105

Packaging Features:

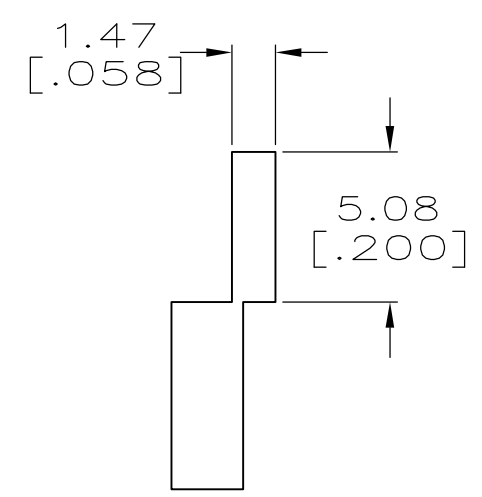
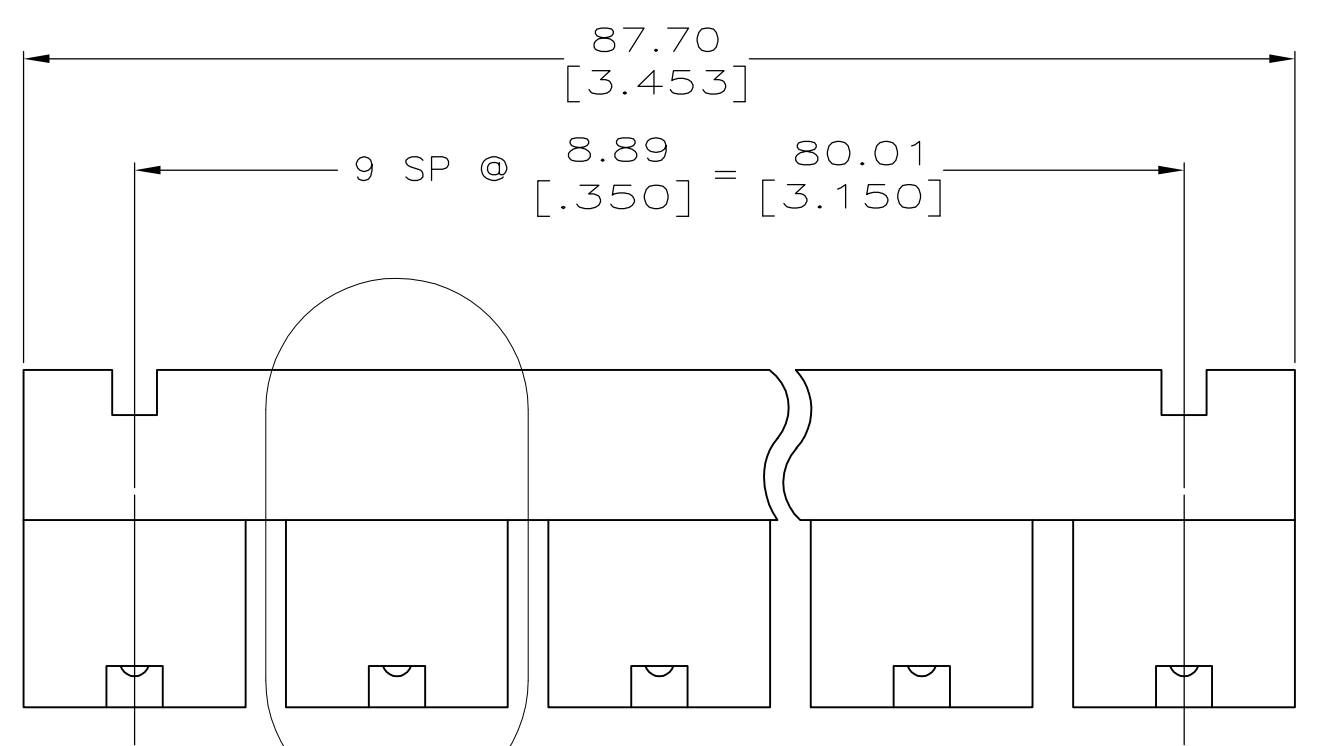
- Packaging Method = Stick of 10

Other:

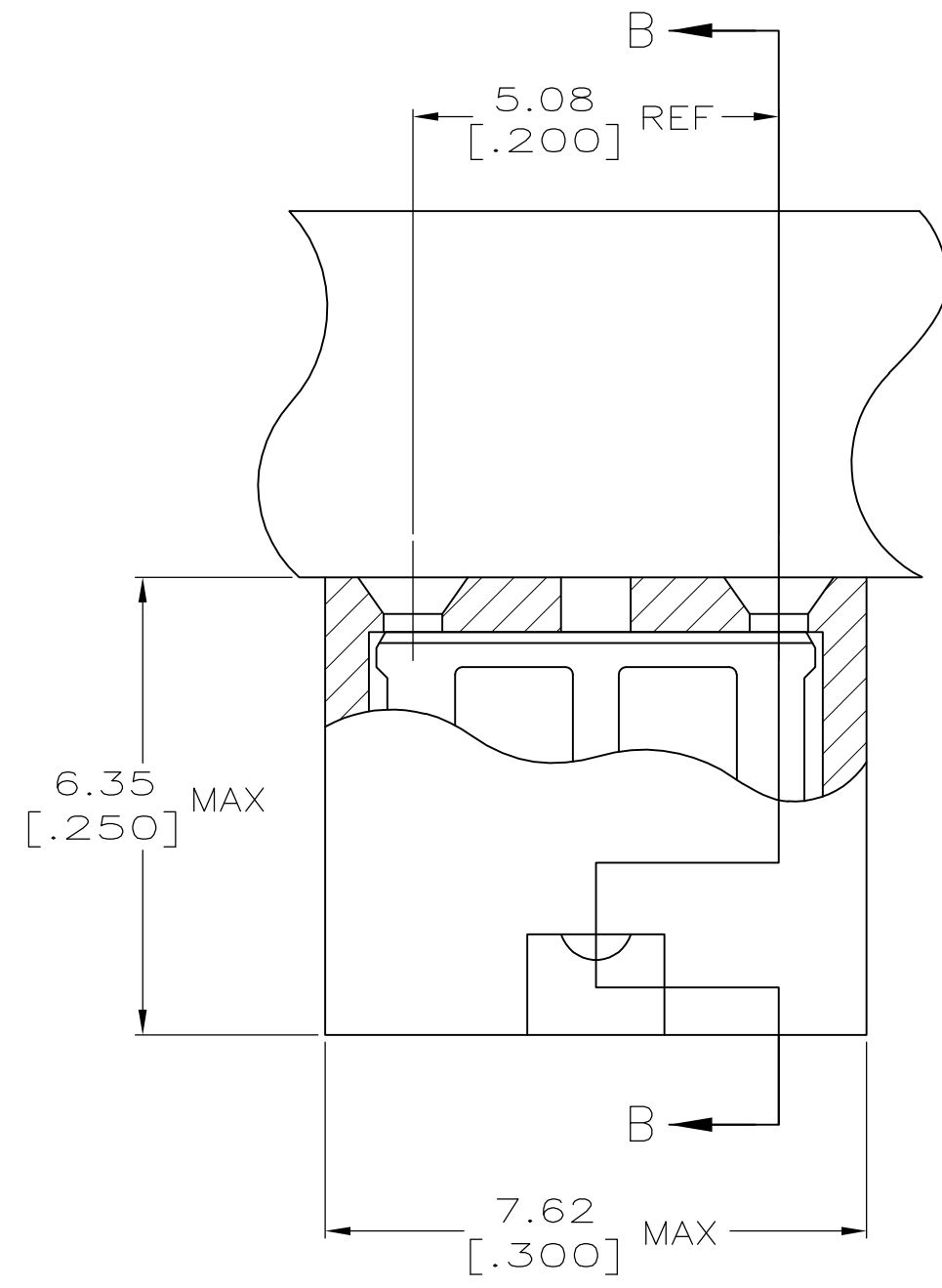
- Brand = AMP

THIS DRAWING IS UNPUBLISHED. RELEASED FOR PUBLICATION
 © COPYRIGHT - By - ALL RIGHTS RESERVED.

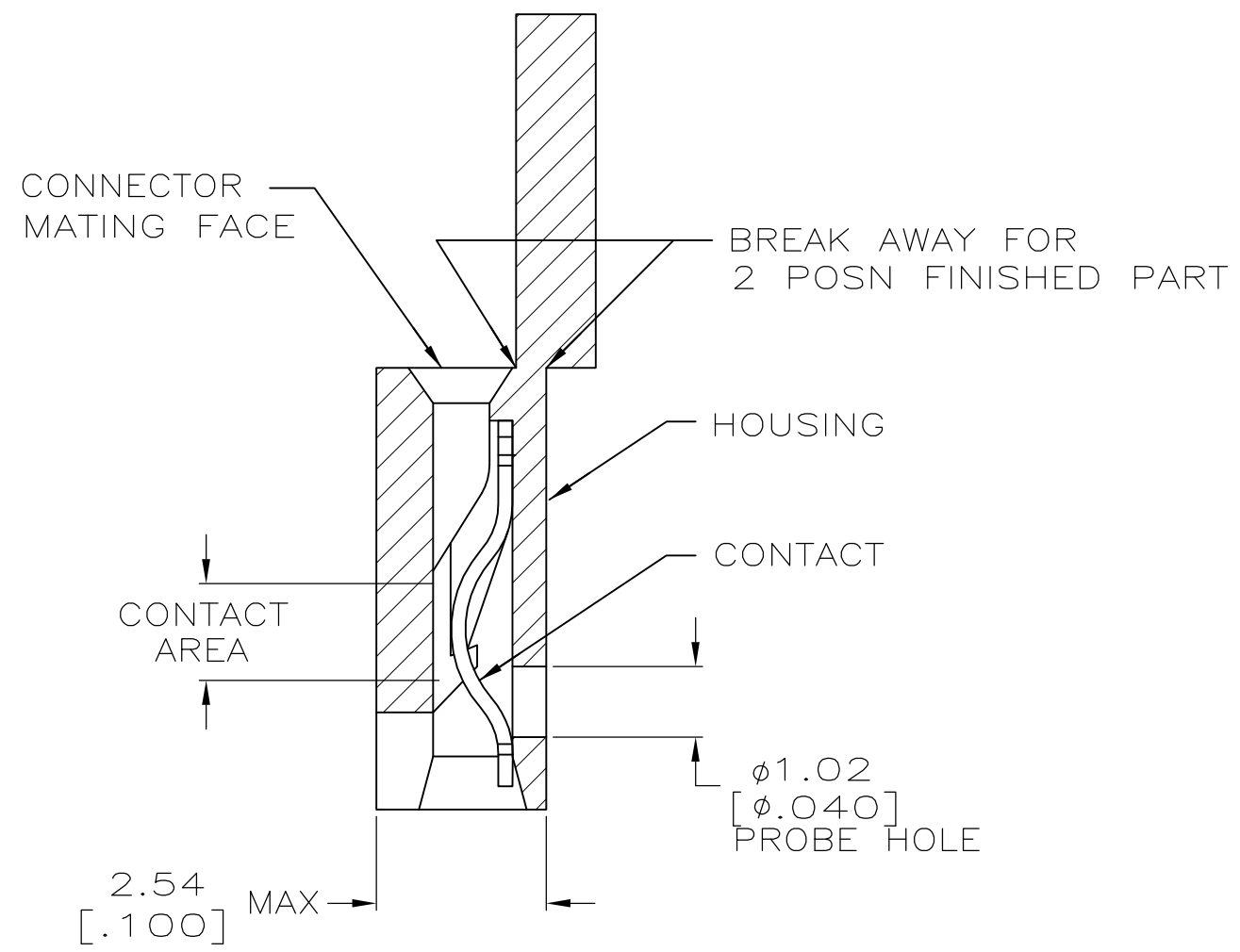
LOC		DIST		REVISIONS			
P	LTR	DESCRIPTION	DATE	DWN	APVD		
AG	00	F2	REVISED PER ECO-11-004820	11MAR11	RK	HMR	



- 1 MATERIAL:
HOUSING: GLASS-FILLED POLYESTER, COLOR-BLACK.
CONTACT: BERYLLIUM COPPER.
- 2 CONTACT PLATED WITH 0.00254 [.000100] TIN-LEAD OVER ALL.
- 3 CONTACT PLATED WITH 0.00038 [.000015] GOLD IN CONTACT AREA OVER 0.00127 [.000050] NICKEL OVER ALL.
- 4 CONTACT PLATED WITH 0.00076 [.000030] GOLD IN CONTACT AREA OVER 0.00127 [.000050] NICKEL OVER ALL.
- 5 PART NO. DENOTES INDIVIDUAL TWO POSITION SHUNT, WHICH IS PACKAGED ON BREAKAWAY COMBS OF TEN SHUNTS.
- 6 CONNECTOR MATES WITH WIRE WRAP POSTS, 0.64 [.025] SQUARE OR ROUND AND 0.56 [.022] X 0.66 [.026] POSTS. LENGTH 5.08 [.200] MINIMUM.
- 7 CONTACT PLATED WITH 0.00254 [.000100] MATTE TIN OVER ALL.
- 8 PART NO. DENOTES INDIVIDUAL TWO POSITION SHUNT, WHICH IS PACKAGED LOOSE PIECE.
- 9 PRELIMINARY P/N - NOT RELEASED FOR PRODUCTION



DETAIL A
SCALE 10:1



SECTION B-B
SCALE 10:1

FINISH	PART NUMBER
7	531230-5
4	531230-4
3	531230-3
2	531230-2
1	531230-1

THIS DRAWING IS A CONTROLLED DOCUMENT.		DWN	R.TALLEY	3-12-91	STE TE Connectivity	
DIMENSIONS: mm [INCHES]		CHK	-	-		
TOLERANCES UNLESS OTHERWISE SPECIFIED:		APVD	-	-	LOW PROFILE SHUNT CONNECTOR 5.08 [.200] CL	
0 PLC ± -		PRODUCT SPEC	108-9057	NAME		
1 PLC ± -		APPLICATION SPEC	114-1059	SIZE	CAGE CODE	DRAWING NO
2 PLC ± -		MATERIAL	SEE TABLE	WEIGHT	-	RESTRICTED TO
3 PLC ± 0.26 [.010]		FINISH	SEE TABLE	CUSTOMER DRAWING	SCALE	4:1
4 PLC ± -				SHEET	1 of 1	REV
ANGLES ± -				REV	F2	