



Have a Question?
 Chat with a Product Information Specialist

What can we help you find?

[Products](#) |
 [Industries](#) |
 [Resources](#) |
 [About TE](#) |
 [My Account](#) |
 [Innovation](#) |
 [Support Center](#)

53417-1 Product Details

[Share](#) |
 [Print](#) |
 [Email](#)



53417-1

TE Internal Number: 53417-1

Active

View 3D PDF

Radiation Resistant/Pre-Insulated Terminals & Splices

Not EU RoHS or ELV Compliant (Find RoHS Compliant Alternates)

Product Highlights:

- Terminal
- 1 & 2 Class
- Wire Range = 1.25-2.00² [16-14] mm [AWG]
- Wire/Cable Size = 2,050 - 5,180 CMA
- Body Style = PIDG

[View all Features](#)

Quick Links

- ▶ [Pricing & Availability](#)
- ▶ [Search for Tooling](#)
- ▶ [Product Feature Selector](#)
- ▶ [Contact Us About This Product](#)

[Add to My Part List](#) |
 [Request Sample](#) |
 [Find Similar Products](#) |
 [Buy Product](#)

Documentation & Additional Information	
<p>Product Drawings:</p> <ul style="list-style-type: none"> • TERMINAL, RING TONGUE, PVF2 , P.I.D.G. WIRE SIZE: 16... (PDF, English) <p>Catalog Pages/Data Sheets:</p> <ul style="list-style-type: none"> • RADIATION_RESISTANT_PRE-INSULATED_TERMINALS_SPLICES (PDF, English) <p>Product Specifications:</p> <ul style="list-style-type: none"> • None Available <p>Application Specifications:</p> <ul style="list-style-type: none"> • None Available <p>Instruction Sheets:</p> <ul style="list-style-type: none"> • None Available <p>CAD Files: (CAD Format & Compression Information)</p> <ul style="list-style-type: none"> • 2D Drawing (DXF, Version R) • 3D Model (IGES, Version R) • 3D Model (STEP, Version R) 	<p>Additional Information:</p> <ul style="list-style-type: none"> • Product Line Information <p>Related Products:</p> <ul style="list-style-type: none"> • Tooling

[List all Documents](#)

Product Features (Please use the Product Drawing for all design activity)	
<p>Product Type Features:</p> <ul style="list-style-type: none"> • Product Type = Terminal • Wire Insulation Diameter (mm [in]) = 3.81 [0.150] • Stud Size = 8 [M4] • Finish = Tin-Lead • Color Code = Blue • Insulation = Yes <p>Termination Features:</p> <ul style="list-style-type: none"> • Wire/Cable Size (CMA) = 2,050 - 5,180 <p>Dimensions:</p> <ul style="list-style-type: none"> • Tongue Material Thickness (mm [in]) = 0.84 [0.033] <p>Body Features:</p> <ul style="list-style-type: none"> • Wire Range (mm [AWG]) = 1.25-2.00² [16-14] • Body Style = PIDG • Body Material = Copper • Insulation Sleeve Color = Natural • Insulation Sleeve Material = PVF2 • Insulation Support Sleeve Material = Copper 	<p>Contact Features:</p> <ul style="list-style-type: none"> • Class = 1 & 2 <p>Industry Standards:</p> <ul style="list-style-type: none"> • Government/Industry Qualification = Yes • Government/Industry Part Number = M7928/13-153, M7928/4-153 • RoHS/ELV Compliance = Not ELV/RoHS compliant • Lead Free Solder Processes = Not relevant for lead free process <p>Packaging Features:</p> <ul style="list-style-type: none"> • Packaging Method = Loose Piece/Bulk <p>Other:</p> <ul style="list-style-type: none"> • Brand = AMP

Corporate Information

[About TE](#)

Quick Links

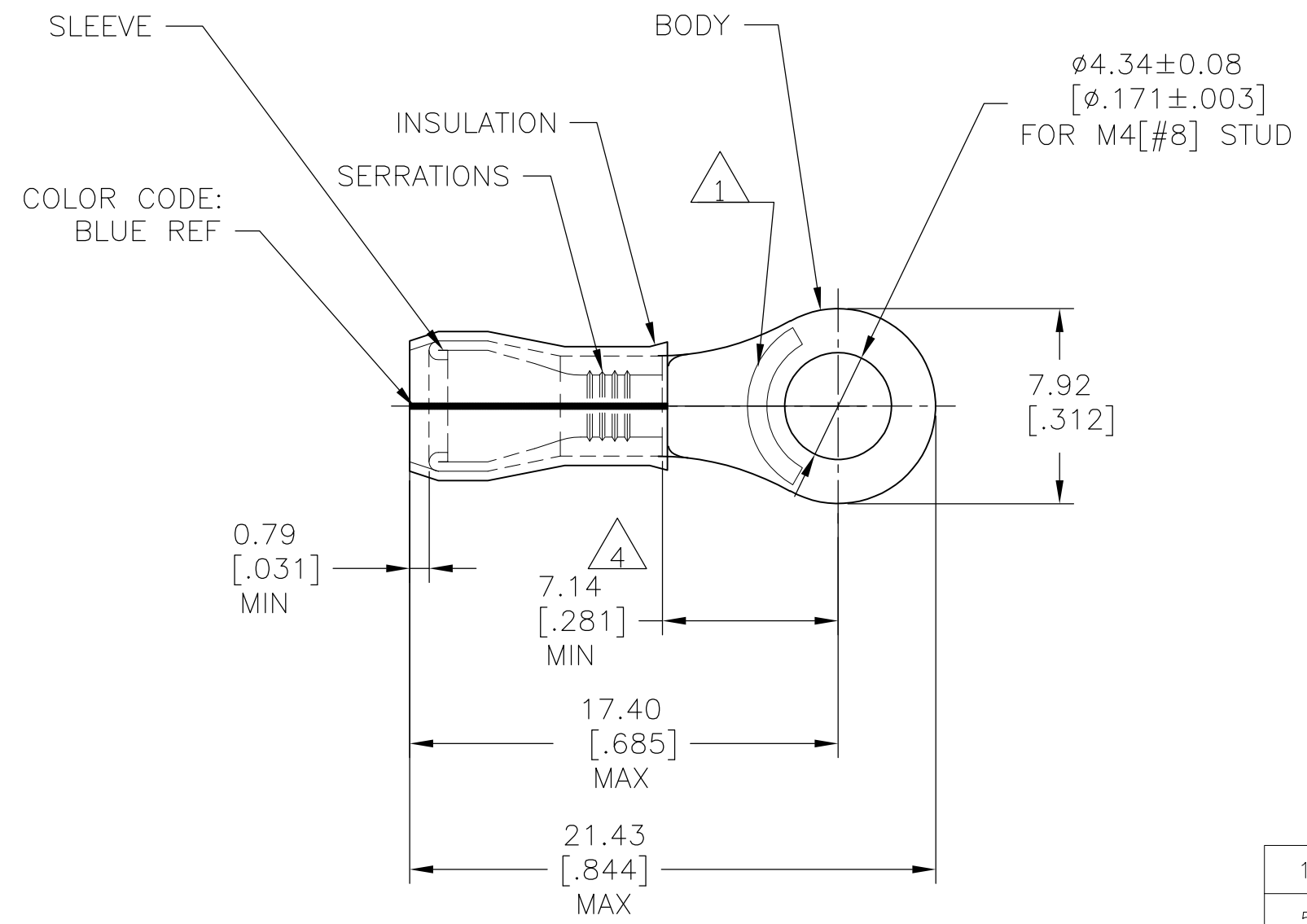
[Distributor Inventory](#)

Customer Support

[Email or Chat With Us](#)

THIS DRAWING IS UNPUBLISHED. RELEASED FOR PUBLICATION
 © COPYRIGHT - By - ALL RIGHTS RESERVED.

LOC	DIST	REVISIONS			
P	LTR	DESCRIPTION	DATE	DWN	APVD
G	14	S3	REVISED PER ECO-12-007718	08MAY12	KH DR



- 1 STAMP AMP 16-14* APPROX AS SHOWN
- 2 WIRE INSULATION DIA: 2.67-3.81[.105-.150]
- 3 TONGUE MATERIAL THK: 0.79±0.05[.031±.002]
- 4 APPLIES FROM EDGE OF METAL WIRE BARREL TO CENTER OF STUD HOLE.
- 5 MEETS M7928/4-153, CLASS 1 & 2
MEETS M7928/13-153, CLASS 1 & 2
- 6 MEETS M7928/4-153, CLASS 2

QTY	PACKAGE TYPE	MATERIAL & FINISH	PART NO
100	LOOSE PIECE, BOX	SAME AS 53417-1	8-53417-1
5000	ON TAPE, REEL	SAME AS 53417-1	53417-2
1000	LOOSE PIECE	BODY: COPPER PER ASTM B152 TIN/LEAD (93-7) PLATE PER ASTM B545 (3% MIN LEAD CONTENT) SLEEVE: COPPER PER ASTM B152 TIN/LEAD (93-7) PLATE PER ASTM B545 (3% MIN LEAD CONTENT) INSULATION: PVF2, COLOR-NATURAL	53417-1

AMP INCORPORATED CUSTOMER SERVICE SYSTEMS		MAX RECOMMENDED OPERATING TEMPERATURE: 150°C [302°F] MAX	THIS DRAWING IS A CONTROLLED DOCUMENT.		DWN JR RUTH 25OCT07	STE TE Connectivity				
FOR ADDITIONAL PRODUCT INFORMATION OR COPIES OF DRAWINGS AND TECHNICAL DOCUMENTS	PRODUCT INFORMATION CENTER 1-800-522-6752	VOLTAGE RATING: N/A	DIMENSIONS: mm [INCHES]	TOLERANCES UNLESS OTHERWISE SPECIFIED:	CHK T MICHELUTTI 25OCT07				NAME TERMINAL, RING TONGUE, PVF2 , P.I.D.G. WIRE SIZE: 16-14 AWG	
FOR APPLICATION TOOLING INFORMATION	TOOLING ASSISTANCE CENTER 1-800-722-1111	CIRCULAR MIL AREA: 1.04-2.62mm² [2,050-5,180] STRANDED		0 PLC ± - 1 PLC ± - 2 PLC ± - 3 PLC ± 0.20[.008] 4 PLC ± - ANGLES ± -	APVD T MICHELUTTI 25OCT07	PRODUCT SPEC	SIZE	CAGE CODE	DRAWING NO	RESTRICTED TO
FOR ORDER ENTRY	1-800-526-5142	THIS DRAWING IS A CONTROLLED DOCUMENT FOR AMP INCORPORATED. IT IS SUBJECT TO CHANGE AND THE CONTROLLING ENGINEERING ORGANIZATION SHOULD BE CONTACTED FOR THE LATEST REVISION.	MATERIAL SEE TABLE	FINISH SEE TABLE	WEIGHT -	APPLICATION SPEC	A3	00779	C-53417	-
CUSTOMER DRAWING						SCALE	4:1	SHEET	1 OF 1	REV S3