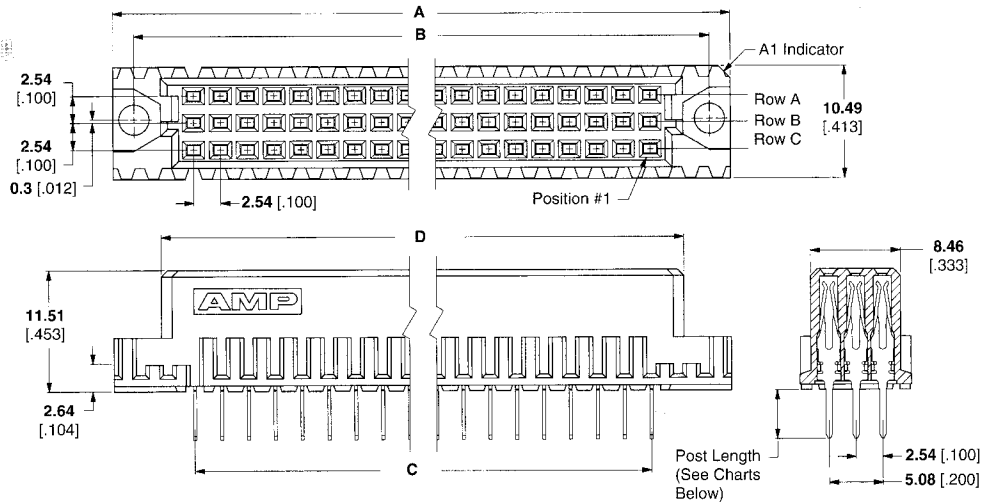
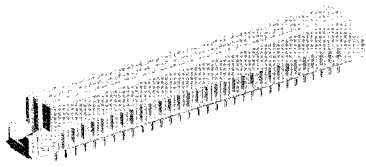


**Type C Vertical Receptacle Assemblies with Solder Posts for PC Board Mount**



**Material**

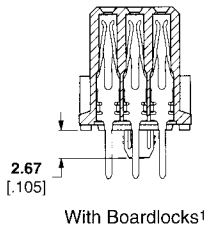
**Housing** — Glass filled polymer  
**Contacts** — Copper alloy

**Related Product Data**

- Common Bus Systems Application** — Page 4
- DIN Performance Levels** — Page 6
- Performance Specifications** — Page 7
- Mateable Connectors** — Pages 17, 18, 19, 28, 52-54
- PC Board Hole Layout** — Page 58
- Accessories** — Pages 64, 67, 68
- Technical Documents** — Page 74:  
DIN Specification 41612  
IEC Specification 60603-2  
Application Specification 114-9014  
Instruction Sheet 408-6784

**Standard Size**

Number of Positions	Rows Loaded	Dimensions				Post Length	DIN Level	Part Number
		A	B	C	D			
96	A,B,C	93.98 3.700	90.00 3.543	78.74 3.100	85.00 3.346	2.49 .098	II	535089-5
								536418-5 <sup>1</sup>
						2.90 .114	II	9-1393640-2
								535090-5
						3.30 .130	II	535090-4
								650963-5 <sup>1</sup>
								650963-4 <sup>1</sup>
							III	535090-9
						3.70 .145	II	7-1393641-0
								2-1393640-4
						4.50 .177	I	2-1393640-3 <sup>1</sup>
								2-1393641-7 <sup>1</sup>
3-1393641-1								
	III	6-1393642-8						
535043-4	II	535043-5						
		536412-4 <sup>1</sup>						
13.00 .512	I	6-1393640-0						
		1-1393642-1						
2.49 .098	II	650458-5						
		536481-5 <sup>1</sup>						
		1-1393640-0						
		9-1393640-3						
2.90 .114	II	9-1393640-0 <sup>1</sup>						
		9-1393642-7 <sup>2</sup>						
		650956-5						
3.30 .130	II	650983-5 <sup>1</sup>						
		2-1393640-5						
4.50 .177	II	3-1393641-5						
		2-1393641-8 <sup>1</sup>						
		6-1393642-9						
	III	6-1393642-7 <sup>1</sup>						
4.57 .180	II	650408-5						
		650408-4						
13.00 .512	II	1-1393642-6						



<sup>1</sup> With Boardlocks  
<sup>2</sup> Flux tight

**Note:** Select load available upon request, contact Product Engineering.

Type C Assemblies