

## 5380598-2 Product Details

[Share](#) [Print](#) [Email](#)



**5380598-2**

TE Internal Number: 5380598-2

Active

[View 3D PDF](#)

### Discrete Sockets

Always EU RoHS/ELV Compliant  
(Statement of Compliance)

### Product Highlights:

- Mini-Spring Socket Product Line
- Board-to-Board, Wire-to-Board
- Applies To Wire/Cable, Applies To Printed Circuit Board
- Contact - Rated Current = 7.5 A
- Wire/Cable Size = .162 - .653 mm<sup>2</sup>

[View all Features](#)

### Quick Links

- ▶ [Pricing & Availability](#)
- ▶ [Search for Tooling](#)
- ▶ [Product Feature Selector](#)
- ▶ [Contact Us About This Product](#)

[Add to My Part List](#) [Request Sample](#) [Find Similar Products](#)  
[Buy Product](#)

### Documentation & Additional Information

#### Product Drawings:

- [REUSABLE COMPONENT RECEPTACLE](#) (PDF, English)

#### Catalog Pages/Data Sheets:

- None Available

#### Product Specifications:

- None Available

#### Application Specifications:

- None Available

#### Instruction Sheets:

- None Available

#### CAD Files: (CAD Format & Compression Information)

- [2D Drawing](#) (DXF, Version A)
- [3D Model](#) (IGES, Version A)
- [3D Model](#) (STEP, Version A)

[List all Documents](#)

#### Additional Information:

- [Product Line Information](#)

#### Related Products:

- [Tooling](#)

### Product Features (Please use the Product Drawing for all design activity)

#### Product Type Features:

- Product Line = Mini-Spring Socket
- [Sleeve Style](#) = Closed Bottom
- [Sealant](#) = Without
- Wire/Cable Type = Discrete Wire
- Product Series = 5
- Profile = Zero

#### Electrical Characteristics:

- Contact - Rated Current (A) = 7.5

#### Termination Features:

- Wire/Cable Size (mm<sup>2</sup>) = 0.162 - 0.653
- Wire/Cable Size (AWG) = 19 - 25
- [Insertion Method](#) = Hand/Semi-Automatic
- Termination Method to Wire/Cable = Solder
- Termination Method to PC Board = Through Hole - Press Fit

#### Contact Features:

- [Contact Spring Plating](#) = Gold (30)
- Contact Plating, Mating Area, Material = Gold (30)
- Contact Plating, Mating Area, Thickness (µm [µin]) = 0.00076 [0.03]
- Contact Type = Socket
- Contact Base Material = Beryllium Copper

#### Industry Standards:

- Government/Industry Qualification = No
- [RoHS/ELV Compliance](#) = RoHS compliant, ELV compliant
- [Lead Free Solder Processes](#) = Wave solder capable to 260°C, Wave solder capable to 240°C, Wave solder capable to 265°C, Reflow solder capable to 245°C, Reflow solder capable to 260°C, Pin-in-Paste capable to 245°C, Pin-in-Paste capable to 260°C
- RoHS/ELV Compliance History = Always was RoHS

<p><b>Dimensions:</b></p> <ul style="list-style-type: none"> <li>• <a href="#">Socket Length (mm [in])</a> = 6.65 [0.262]</li> <li>• Recommended Hole Size (mm [in]) = 2.26 [0.089]</li> <li>• PCB Thickness, Recommended (mm [in]) = 0.79 – 3.18 [0.031 – 0.125]</li> </ul> <p><b>Body Features:</b></p> <ul style="list-style-type: none"> <li>• <a href="#">Mating Pin Dia. Range (mm [in])</a> = 0.46 – 1.02 [0.018 – 0.040]</li> <li>• <a href="#">Sleeve Material Plating</a> = Tin</li> <li>• Wire Type = Solid</li> <li>• Sleeve Material = Copper</li> <li>• Spring Material = Beryllium Copper</li> </ul>	<p>compliant</p> <p><b>Environmental:</b></p> <ul style="list-style-type: none"> <li>• Operating Temperature (°C [°F]) = -65 – +126 [-85 – +258]</li> </ul> <p><b>Conditions for Usage:</b></p> <ul style="list-style-type: none"> <li>• Applies To = Wire/Cable, Printed Circuit Board</li> </ul> <p><b>Operation/Application:</b></p> <ul style="list-style-type: none"> <li>• Application Use = Board-to-Board, Wire-to-Board</li> <li>• Contact Transmits (Typical Application) = Signal (Data)/Power</li> <li>• Application = Testing/Reusable</li> </ul> <p><b>Packaging Features:</b></p> <ul style="list-style-type: none"> <li>• Packaging Method = Loose Piece</li> <li>• Packaging Quantity = 2,000/Bag</li> </ul> <p><b>Other:</b></p> <ul style="list-style-type: none"> <li>• Brand = AMP</li> </ul>
---	--

### Corporate Information

- [About TE](#)
- [Investors](#)
- [News Room](#)
- [Supplier Portal](#)
- [Careers](#)
- [Terms & Conditions](#)
- [Privacy Policy](#)
- [AODA Accessibility Policy](#)
- [AODA Multi-Year Accessibility Plan](#)

### Quick Links

- [Distributor Inventory](#)
- [Product Cross Reference](#)
- [Documents & Drawings](#)
- [Product Compliance Support Center](#)
- [Site Map](#)

### Customer Support

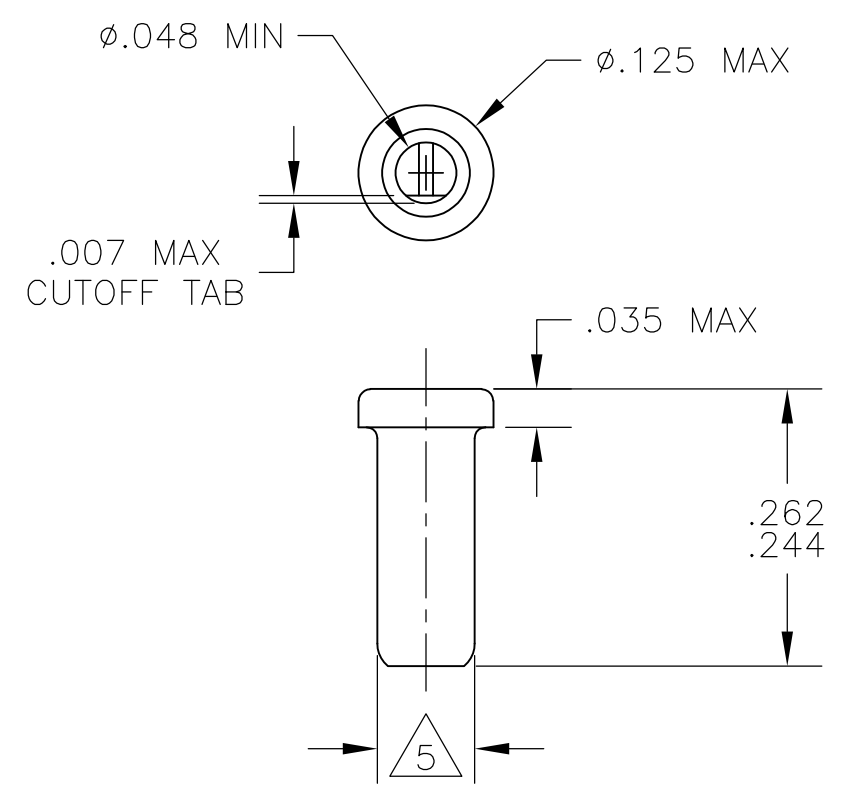
- [Email or Chat With Us](#)
- [Find a Phone Number](#)
- [Knowledge Base](#)
- [Manage Your Account](#)

### Keep Me Informed



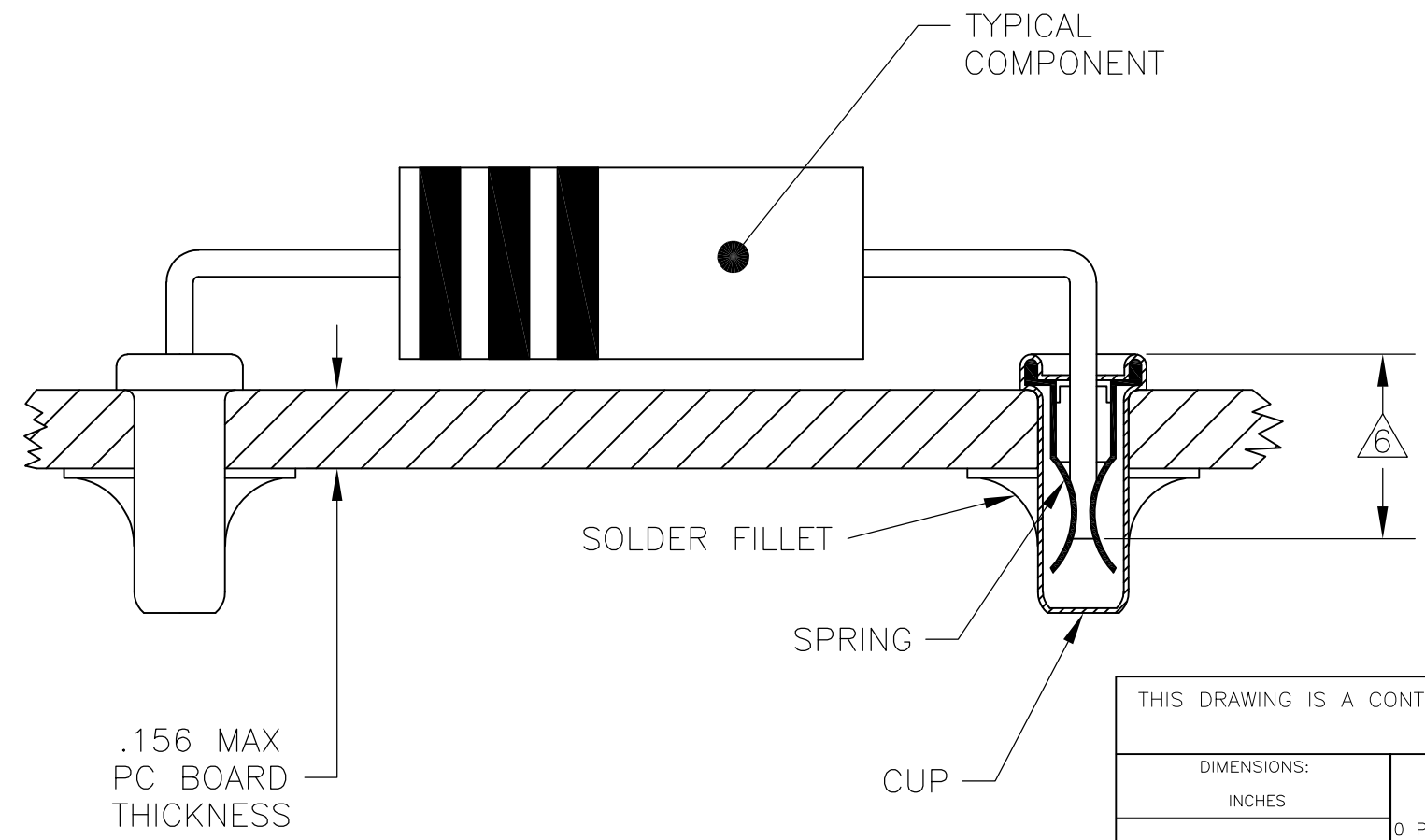
THIS DRAWING IS UNPUBLISHED. RELEASED FOR PUBLICATION  
 © COPYRIGHT - By - ALL RIGHTS RESERVED.

LOC	DIST	REVISIONS					
AG	67	P	LTR	DESCRIPTION	DATE	DWN	APVD
			A1	REVISED PER ECO-11-004835	11MAR11	RK	HMR



- 1 MATERIALS:  
CUP: COPPER PER ASTM B 152  
SPRING: BERYLLIUM COPPER PER ASTM B 194
- 2 TIN PLATE PER ASTM B 545 .000080 MIN THICK.
- 3 GOLD PLATE PER ASTM B 488 .000030 MIN THICK OVER NICKEL PLATE PER QQ-N-290 IN CONTACT AREA.
- 4 TIN PLATE PER ASTM B 545 .000100 MIN THICK.
- 5 PART FITS INTO A #43 DRILLED HOLE ( $\phi.0890 \pm .0015$ ) FOR HAND INSERTION, AND A #44 DRILLED HOLE ( $\phi.0860 \pm .0015$ ) FOR MACHINE INSERTION.
- 6 .145 MIN INSERTION DEPTH REQUIRED FOR A RELIABLE CONNECTION.
- 7. SPRING TO BE SECURED IN CUP WITH NO SPRING ROTATION PERMISSIBLE.
- 8. LEAD RANGES AND PERFORMANCE RESULTS:

LEAD RANGES (DIA)	.018-.020	.025-.032	.035-.040
MAX INSERTION FORCE (OZ)	17	37	48
MIN EXTRACTION FORCE (OZ)	1.0	1.5	2.0
MILLIVOLT DROP (mV MAX)	2.00	1.75	1.50



TIN 4	TIN 2	5380598-3
	GOLD 3	5380598-2
CUP	SPRING	PART NO.
PLATING		

THIS DRAWING IS A CONTROLLED DOCUMENT.

DIMENSIONS: INCHES	TOLERANCES UNLESS OTHERWISE SPECIFIED:	DWN J. HAVENER 18OCT2005	<b>STE</b> TE Connectivity	
	0 PLC ± - 1 PLC ± - 2 PLC ± - 3 PLC ± .015 4 PLC ANGLES ± - ± 1°	CHK J. HAVENER 18OCT2005		
MATERIAL 1	FINISH SEE TABLE	APVD J. HAVENER 18OCT2005	NAME REUSABLE COMPONENT RECEPTACLE	
		PRODUCT SPEC 108-1079	SIZE A3	CAGE CODE 00779
		APPLICATION SPEC 114-1055	DRAWING NO C-5380598	RESTRICTED TO -
		WEIGHT -	SCALE NTS	SHEET 1 OF 1
		CUSTOMER DRAWING		REV A1