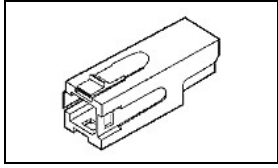


53884-3 Product Details



53884-3

TE Internal Number: 53884-3



Power Lock Connectors

 Always EU RoHS/ELV Compliant (Statement of Compliance)

Product Highlights:

- Wire-to-Wire
- Applies To Wire/Cable
- Connector
- 1 Positions
- Housing Color = Black

Documentation & Additional Information

Product Drawings:

- [HOUSING ASSEMBLY, SERIES 2, POWER LOCK](#) (PDF, English)

Catalog Pages/Data Sheets:

- None Available

Product Specifications:

- [Connector, Power Lock, Series 2](#) (PDF, English)

Application Specifications:

- [Power Lock 75 Series Contacts](#) (PDF, English)
- [Power-Lock 75 Series Contacts](#) (PDF, Japanese)

Instruction Sheets:

- [Power Lock Connectors \(Series II\) \(Accept Contacts 5...](#) (PDF, English)

CAD Files: (CAD Format & Compression Information)

- [2D Drawing](#) (DXF, Version H)
- [3D Model](#) (IGES, Version H)
- [3D Model](#) (STEP, Version H)

Additional Information:

- [Product Line Information](#)

Related Products:

- [Tooling](#)

Product Features (Please use the Product Drawing for all design activity)

Product Type Features:

- Product Type = Connector
- Connector Type = Housing
- PCB Mount Retention = Without
- Sealed = No
- UL File Number = E28476
- CSA File Number = LR7189
- Wire/Cable Type = Discrete Wire

Mechanical Attachment:

- Mating Retention Type = Lock

Dimensions:

- Length (X-Axis) (mm [in]) = 48.23 [1.900]
- Width (Z-Axis) (mm [in]) = 16.00 [0.630]
- Profile Height (Y-Axis) (mm [in]) = 16.00 [0.630]

Body Features:

- Mating Retention = With

Housing Features:

- Housing Color = Black
- Connector Style = Plug - Receptacle
- Mating Alignment = Without

Configuration Features:

- Number of Positions = 1
- Custom Configurable = Yes

Industry Standards:

- [RoHS/ELV Compliance](#) = RoHS compliant, ELV compliant
- [Lead Free Solder Processes](#) = Not relevant for lead free process
- RoHS/ELV Compliance History = Always was RoHS compliant
- VDE Tested = No
- Agency/Standard = CSA, UL
- UL Rating = Recognized
- CSA Certified = Yes

Conditions for Usage:

- Applies To = Wire/Cable

Operation/Application:

- Application Use = Wire-to-Wire
- Contact Transmits (Typical Application) = Power

Packaging Features:

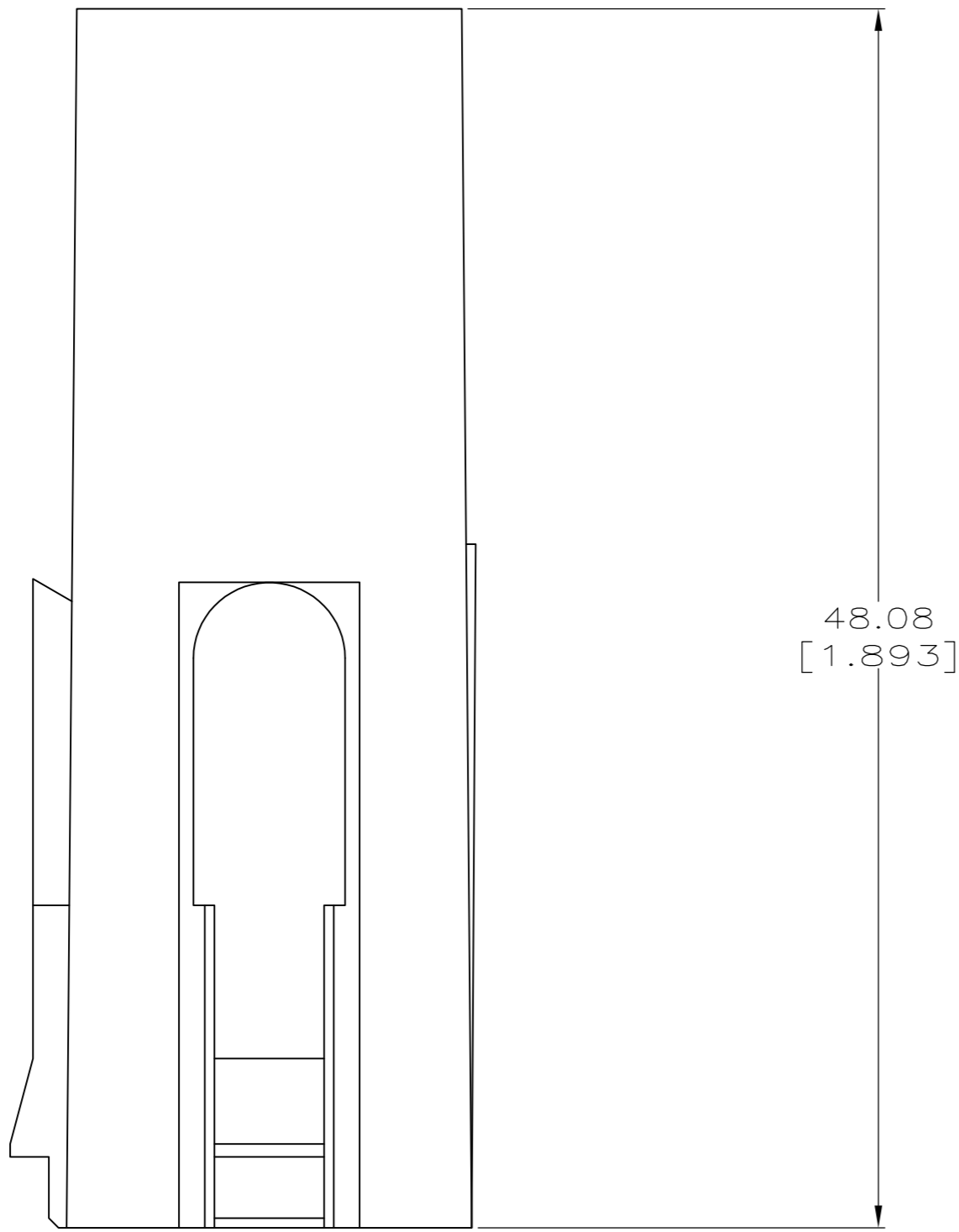
- Packaging Method = Loose Piece

Other:

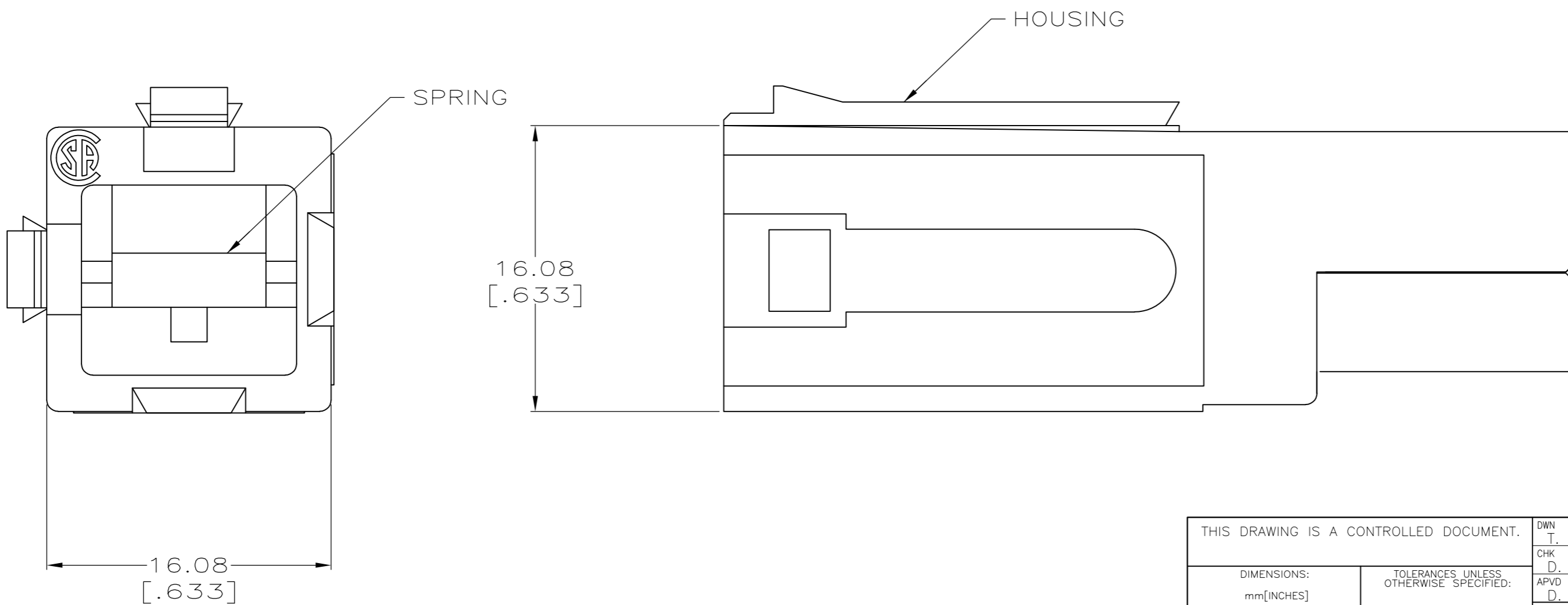
- Brand = AMP

THIS DRAWING IS UNPUBLISHED. RELEASED FOR PUBLICATION
 © COPYRIGHT - By - ALL RIGHTS RESERVED.

LOC	DIST	REVISIONS					
FT	60	P	LTR	DESCRIPTION	DATE	DWN	APVD
		H2		REVISED PER ECO-11-004917	11MAR11	RK	HMR



- ① ALL DIMENSIONS SHOWN ARE MAXIMUM UNLESS OTHERWISE SPECIFIED.
- ② MATERIAL:
HOUSING - POLYCARBONATE, SEE TABLE FOR COLOR.
SPRING - STAINLESS STEEL.
- ③ OBSOLETE PARTS: OBSOLETE CIS STREAMLINING PER D.RENAUD/D.SINISI



③ OBSOLETE	RED	53884-4
	BLACK	53884-3
	WHITE	53884-2
	BLUE	53884-1
	COLOR	PART NO.

THIS DRAWING IS A CONTROLLED DOCUMENT.		DWN T. SPRINKLE 18MAR96	TE TE Connectivity			
DIMENSIONS: mm[INCHES]		CHK D. AHERON 04APR96				
TOLERANCES UNLESS OTHERWISE SPECIFIED:		APVD D. KEMPKA 04APR96	NAME HOUSING ASSEMBLY, SERIES 2, POWER LOCK			
0 PLC ± -	①	PRODUCT SPEC 108-11043	SIZE A2	CAGE CODE 00779	DRAWING NO C=53884	RESTRICTED TO -
1 PLC ± -		APPLICATION SPEC 114-6032	WEIGHT -	SCALE 4:1	SHEET 1 of 1	REV H2
2 PLC ± -		MATERIAL ②	CUSTOMER DRAWING			
3 PLC ± -		FINISH -				
4 PLC ± -						
ANGLES ± -						

53884

D

C

B

A