

## 5414217-1 Product Details

[Share](#) [Print](#) [Email](#)




**5414217-1**

TE Internal Number: 5414217-1

 Active

[View 3D PDF](#)

### BNC RF Connectors

 Always EU RoHS/ELV Compliant  
(Statement of Compliance)

### Product Highlights:

- Connector - RF
- Jack
- Connector Style = Jack
- Applies To Wire/Cable
- Coaxial Cable Termination Type = Solder

[View all Features](#)

### Quick Links

- ▶ [Pricing & Availability](#)
- ▶ [Search for Tooling](#)
- ▶ [Product Feature Selector](#)
- ▶ [Contact Us About This Product](#)

[Add to My Part List](#)

[Request Sample](#)

[Find Similar Products](#)

[Buy Product](#)

### Documentation & Additional Information

#### Product Drawings:

- [SOLDER RECEPTACLE, JACK, BNC 75 OHM](#) (PDF, English)

#### Catalog Pages/Data Sheets:

- [BNC Connectors](#) (PDF, English)

#### Product Specifications:

- None Available

#### Application Specifications:

- None Available

#### Instruction Sheets:

- None Available

#### CAD Files: (CAD Format & Compression Information)

- [2D Drawing](#) (DXF, Version 0)
- [3D Model](#) (IGES, Version 0)
- [3D Model](#) (STEP, Version 0)

[List all Documents](#)

#### Related Products:

- [Tooling](#)

### Product Features (Please use the Product Drawing for all design activity)

#### Product Type Features:

- [Product Type](#) = Connector - RF
- [Gender](#) = Jack
- [Grade](#) = Commercial
- [PCB Mount Retention](#) = Without
- [Sealed](#) = Yes
- [Isolated](#) = No
- [Dielectric Material](#) = Polymethylpentene

#### Mechanical Attachment:

- [Surface Mountable](#) = No
- [Hardware Included](#) = No
- [Panel Mount Retention](#) = With
- [Panel Mount Retention Type](#) = Bulkhead
- [Panel Attachment Style](#) = Front Mount

#### Electrical Characteristics:

- [Connector Impedance](#) ( $\Omega$ ) = 75

#### Contact Features:

- [Center Contact Material](#) = Phosphor Bronze
- [Center Contact Plating](#) = Gold

#### Housing Features:

- [Connector Style](#) = Jack

#### Configuration Features:

- [Number of Ports](#) = 1
- [Solder Terminal](#) = Without

#### Industry Standards:

- [Government/Industry Qualification](#) = No
- [RoHS/ELV Compliance](#) = RoHS compliant, ELV compliant
- [Lead Free Solder Processes](#) = Not relevant for lead free process
- [RoHS/ELV Compliance History](#) = Always was RoHS compliant

**Termination Features:**

- [Coaxial Cable Termination Type](#) = Solder

**Body Features:**

- [Body Style](#) = Straight
- [Body Material](#) = Diecast Zinc
- [Body Plating](#) = Nickel
- [Body Insulation](#) = Without
- [Polarized](#) = No

**Conditions for Usage:**

- [Applies To](#) = Wire/Cable

**Other:**

- [Brand](#) = AMP

**Corporate Information**

[About TE](#)  
[Investors](#)  
[News Room](#)  
[Supplier Portal](#)  
[Careers](#)  
[Terms & Conditions](#)  
[Privacy Policy](#)

**Quick Links**

[Distributor Inventory](#)  
[Product Cross Reference](#)  
[Documents & Drawings](#)  
[Product Compliance Support Center](#)  
[Site Map](#)

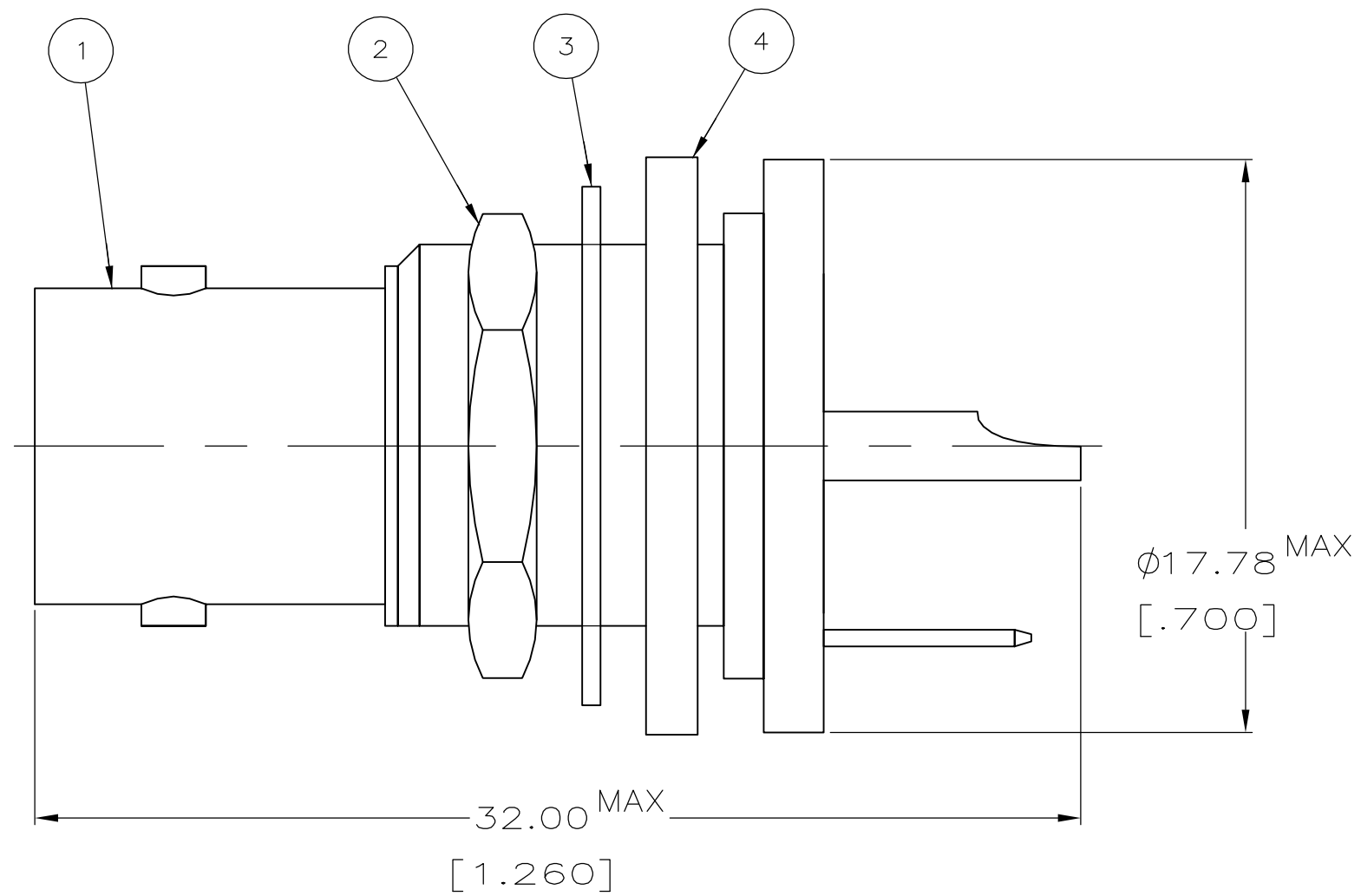
**Customer Support**

[Email or Chat With Us](#)  
[Find a Phone Number](#)  
[Knowledge Base](#)  
[Manage Your Account](#)

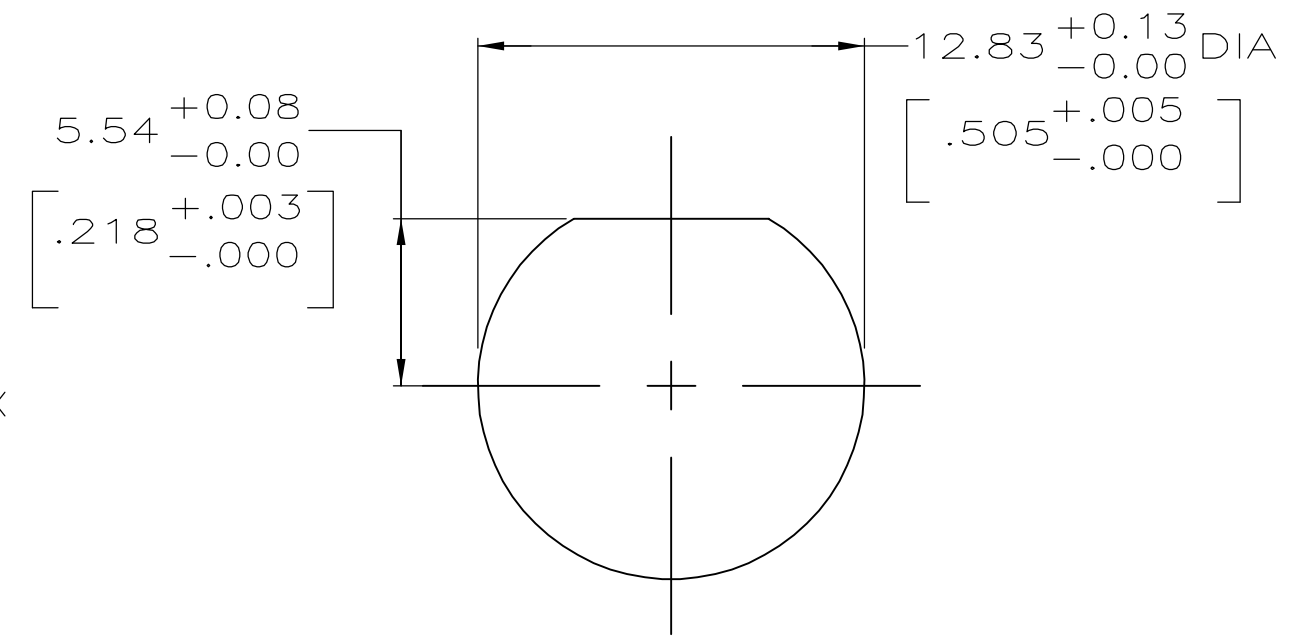
**Keep Me Informed**

THIS DRAWING IS UNPUBLISHED. RELEASED FOR PUBLICATION  
 © COPYRIGHT - BY TYCO ELECTRONICS CORPORATION. ALL RIGHTS RESERVED.

LOC	DIST	REVISIONS			
P	LTR	DESCRIPTION	DATE	DWN	APVD
AJ	16				
	0	PER EC 0S14-0072-05	26APR2005	JA	JL



1. PANEL THICKNESS: 6.35 [.250] MAX



RECOMMENDED PANEL CUTOUT  
SCALE: 4:1

227431-1	1-329632-2	1-329631-2	414230-1	5414217-1
④ GASKET QTY=1	③ LOCK WASHER QTY=1	② JAM NUT QTY=1	① JACK ASSEMBLY QTY=1	PART NUMBER

THIS DRAWING IS A CONTROLLED DOCUMENT.

DIMENSIONS: mm [INCHES]	TOLERANCES UNLESS OTHERWISE SPECIFIED:	DWN J. ALCORTA - 26APR2005	Tyco Electronics Corporation Harrisburg, PA 17105-3608
	0 PLC ± - 1 PLC ± - 2 PLC ± - 3 PLC ± - 4 PLC ± - ANGLES ± -	CHK J. HAVENER 26APR2005	
MATERIAL	FINISH	APVD J. LIPPERT 26APR2005	NAME SOLDER RECEPTACLE, JACK, BNC 75 OHM
-	-	PRODUCT SPEC -	SIZE A3
		APPLICATION SPEC -	CAGE CODE 00779
		WEIGHT -	DRAWING NO C=5414217
		CUSTOMER DRAWING	RESTRICTED TO -
		SCALE 5:1	SHEET 1 of 1
			REV 0