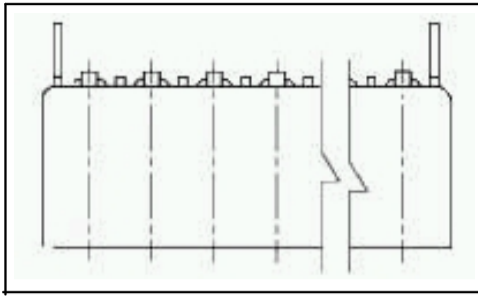


**Product Details for 5 -487508 -6**



**5 -487508 -6**

[Active](#)

**Flexible Film Connectors**

[RoHS Compliant \(Statement of Compliance\)](#)

**Product Highlights:**

- ? Connector
- ? 2.54 mm Centerline
- ? Connector Type = Trio -Mate
- ? 7 Position
- ? Number of Rows = Single

[View all Features](#)

**Quick Links**

- [Check Pricing & Availability](#)
- [Search for Tooling](#)
- [Product Feature Selector](#)
- [Contact Us About This Product](#)

**Documentation & Additional Information**

**Product Drawings:**

- ? [TRIOMATE HORIZONTAL CABLE ENTRY FOR 1.57 \( .082 \) TH...](#)  
(PDF, English)

**Catalog Pages/Data Sheets:**

- ? None Available

**Product Specifications:**

- ? None Available

**Application Specifications:**

- ? None Available

**Instruction Sheets:**

- ? None Available

**CAD Files:**

- ? None Available

**Additional Information:**

- ? [Product Line Information](#)

**Additional Product Images:**

- ? [PCB Layout](#)

**Related Products:**

- ? [Tooling](#)

[List all Documents](#)

**Product Features** (Please use the Product Drawing for all design activity)

**Product Type Features:**

- ? [Product Type](#) = Connector
- ? [Connector Type](#) = Trio -Mate
- ? [Number of Positions](#) = 7
- ? [PCB Thickness \(mm \[in\]\)](#) = 1.60 [0.063]
- ? [Mating Connector Lock](#) = Without
- ? [Mating Polarization](#) = Without
- ? [Mounting Ears](#) = Without
- ? Color = Black

**Mechanical Attachment:**

- ? [Panel Attachment](#) = Without

**Termination Related Features:**

- ? Termination Post Length (mm [in]) = 4.06 [0.160]

**Body Related Features:**

- ? [Centerline \(mm \[in\]\)](#) = 2.54 [0.100]
- ? [Number of Rows](#) = Single
- ? [Cable Entry Angle](#) = Right Angle

**Contact Related Features:**

- ? Contact Mating Area Plating = Bright Tin
- ? Contact Material = Phosphor Bronze

**Housing Related Features:**

- ? Housing Material = Thermoplastic Polyester
- ? Housing Flammability Rating = UL 94V -0

**Industry Standards:**

- ? [RoHS/ELV Compliance](#) = RoHS compliant, ELV compliant
- ? [Lead Free Solder Processes](#) = Wave solder capable to 240°C, Wave solder capable to 260°C, Wave solder capable to 265°C
- ? RoHS/ELV Compliance History = Always was RoHS compliant

**Conditions for Usage:**

- ? [Terminate To](#) = Printed Circuit Board

**Other:**

- ? Brand = AMP