

Quick Reference Guide

AMP-LATCH Ribbon Cable Interconnect

AMP-LATCH connectors are ribbon cable-to-board devices used to make the transition between ribbon cable and pc board circuitry. They find heavy use within equipment to connect one board to another or one subsystem to another.

This guide illustrates the recommended range of IDC connectors available through the TE Connectivity brands. While this selector guide includes the more commonly used products which terminate to a 0.050" [1.27mm] ribbon cable pitch, TE Connectivity also offers connectors which terminate to 0.025" [0.64mm] and 0.39" [1.0mm] ribbon cable.

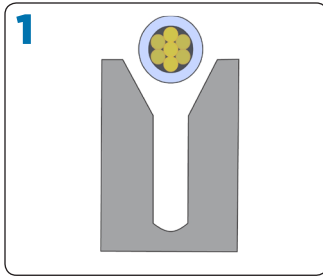
FEATURES AND BENEFITS

- Mass termination capabilities
- No need to strip or prepare wire
- Labor savings

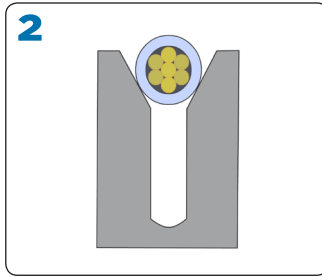
PRODUCT APPLICATIONS

- Computers/Electronics
- Business Equipment
- Medical Equipment

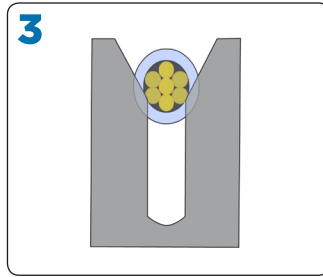
IDC Termination



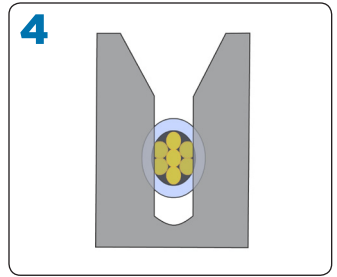
The wire must be aligned with the IDC slot



As insertion begins, the wire insulation is displaced.



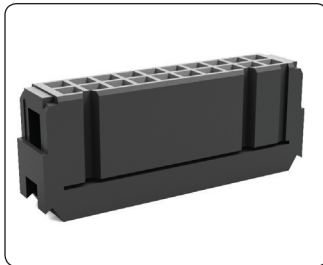
Insulation displacement is completed and conductor strands begin to deform.



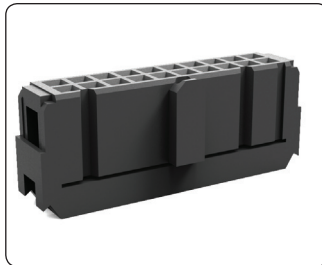
As the conductor is pushed further into the slot, strand deformation is completed and beam deflection occurs. The connection is established and maintained by high residual beam force.

Polarization

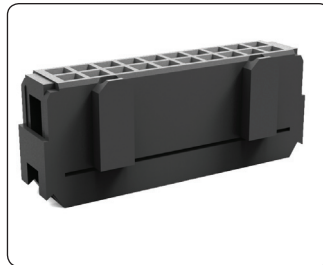
Receptacles



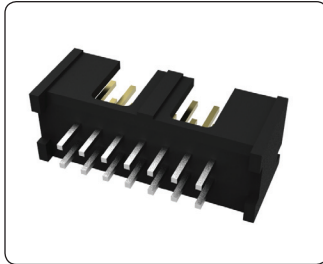
1658620-4
Military



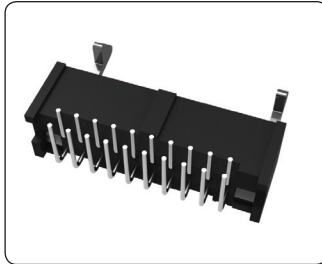
1658621-4
Center and Military



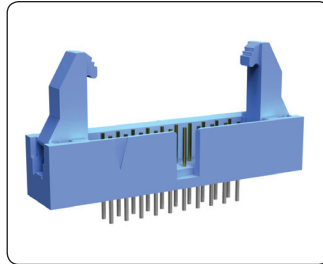
1658624-4
Dual



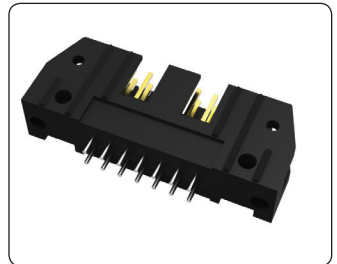
5103308-2
Center and Dual



1761607-7
Military and Center



1761688-7
Center



5102153-2
Military, Center and Dual

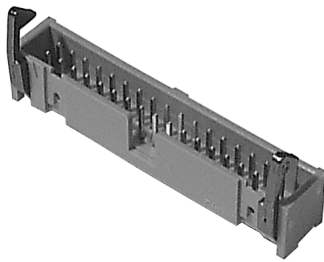
Application Tooling

AMP-LATCH HEADER TOOLING	
Press-Fit Universal Header Tooling	
Seating Tool	91085-2
PCB Transition Connectors/DIP Plugs Tooling	
Universal Hand Tool Kit	768340-1
Connector Specific Kit	768347-1

AMP-LATCH RECEPTACLE TOOLING	
Manual Tooling	
Arbor Frame Assembly	91085-2
Connector Specific Kit	768341-1
Universal Base Assembly	768338-1
Pneumatic Tooling	
Pneumatic Arbor Press	91112-2
Connector Specific Kit	768341-1
Universal Base Assembly	768338-1
Hand Tooling	
Universal Hand Tool Kit	768340-1

AMP-LATCH .050" [1.27MM] STANDARD PRODUCT OFFERING

AMP-LATCH Low Profile Headers



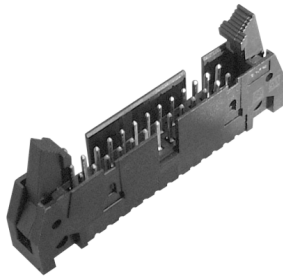
- **Contact material:** Brass / Phosphor Bronze*
- **Contact area plating:** 0.38um, Au flash over PdNi plating
0.76um, Au over PdNi underplating*
- **Color:** Black
- **Insulation material:** Glass Filled Nylon / PBT*
- **Flammability:** UL 94V-0
- **Current rating:** 1A
- **Insulation resistance:** 5000 MΩ Minimum
- **Dielectric strength:** 1,000 V rms
- **Temperature rating:** -65 to +105C

WITHOUT LATCHES		
No of Positions	Vertical	Right Angle
10	5103308-1	5103310-1
14	5103308-2	5103310-2
16	5103308-3	5103310-3
20	5103308-5	5103310-5
26	5103308-6	5103310-6
34	5103308-7	5103310-7
40	5103308-8	5103310-8
50	1-5103308-0	1-5103310-0
60	Inquire for availability	

WITH SHORT LATCHES		
No of Positions	Vertical	Right Angle
10	1761608-3	1761609-3
14	1761608-5	1761609-5
16	1761608-6	1761609-6
20	1761608-7	1761609-7
26	1761608-9	1761609-9
34	1-1761608-1	1-1761609-1
40	1-1761608-3	1-1761609-3
50	1-1761608-5	1-1761609-5
60	1-1761608-6	1-1761609-6

WITH LONG LATCHES		
No of Positions	Vertical	Right Angle
10	1761606-3	1761607-3
14	1761606-5	1761607-5
16	1761606-6	1761607-6
20	1761606-7	1761607-7
26	1761606-9	1761607-9
34	1-1761606-1	1-1761607-1
40	1-1761606-3	1-1761607-3
50	1-1761606-5	1-1761607-5
60	1-1761606-6	1-1761607-6

AMP-LATCH Universal Election Style Pin Headers



- **Contact material:** Brass
- **Contact area plating:** 0.38um, Au flash over PdNi plating
- **Color:** Black
- **Insulation material:** Glass Filled Nylon or Polyester
- **Flammability:** UL 94V-0
- **Current rating:** 1A
- **Insulation resistance:** $1 \times 10^9 \Omega$
- **Dielectric strength:** 1,000 V rms
- **Temperature rating:** -55 to +105C

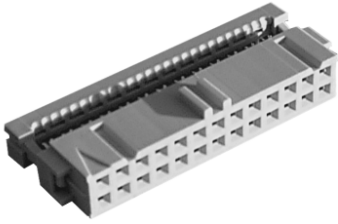
WITHOUT LATCHES		
No of Positions	Vertical	Right Angle
10	5102153-1	5102159-1
14	5102154-2	5102159-2
16	5102153-3	5102159-3
20	5102153-4	5102159-4
26	5102153-6	5102159-6
34	5102153-8	5102159-8
40	5102153-9	5102159-9
50	1-5102153-0	1-5102159-0
60	Inquire for availability	

WITH SHORT LATCHES		
No of Positions	Vertical	Right Angle
10	5499910-1	5499913-1
14	5499910-2	5499913-2
16	5499910-3	5499913-3
20	5499910-4	5499913-4
26	5499910-6	5499913-6
34	5499910-8	5499913-8
40	5499910-9	5499913-9
50	1-5499910-0	1-5499913-0
60	-	1-5499913-1

WITH LONG LATCHES		
No of Positions	Vertical	Right Angle
10	5499922-1	5499786-1
14	5499922-2	5499786-2
16	5499922-3	-
20	5499206-4	5499786-4
26	5499922-6	5499786-6
34	5499922-8	5499786-8
40	5499922-9	5499786-9
50	1-5499922-0	1-5499786-0
60	1-5499922-1	1-5499786-1

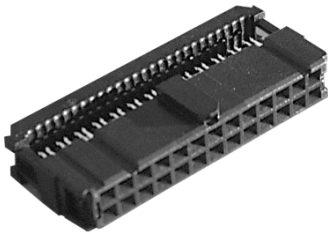
AMP-LATCH .050" [1.27MM] STANDARD PRODUCT OFFERING CONTINUED

AMP-LATCH Receptacles



- **Contact material:** Phosphor Bronze
- **Contact area plating:** 0.8um Au
- **Color:** Grey
- **Insulation material:** Thermoplastic Polyester
- **Flammability:** UL 94V-0
- **Current rating:** 1A
- **Insulation resistance:** $1 \times 10^9 \Omega$
- **Dielectric strength:** 500V
- **Temperature rating:** -65 to +105C

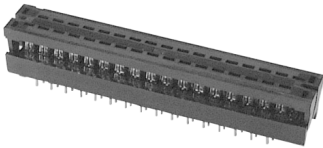
GREY, 0.8UM GOLD PLATING		
No of Positions	Vertical	Strain Relief
10	1761608-3	1761609-3
14	1761608-5	1761609-5
16	1761608-6	1761609-6
20	1761608-7	1761609-7
26	1761608-9	1761609-9
34	1-1761608-1	1-1761609-1
40	1-1761608-3	1-1761609-3
50	1-1761608-5	1-1761609-5
60	1-1761608-6	1-1761609-6



- **Contact material:** Phosphor Bronze
- **Contact area plating:** 0.4um Au
- **Color:** Black
- **Insulation material:** Thermoplastic
- **Flammability:** UL 94V-0
- **Current rating:** 1A
- **Insulation resistance:** $1 \times 10^9 \Omega$
- **Dielectric strength:** 1000V
- **Temperature rating:** -65 to +105C

BLACK, 0.4UM GOLD PLATING		
No of Positions	Vertical	Strain Relief
10	5102153-1	5102159-1
14	5102154-2	5102159-2
16	5102153-3	5102159-3
20	5102153-4	5102159-4
26	5102153-6	5102159-6
34	5102153-8	5102159-8
40	5102153-9	5102159-9
50	1-5102153-0	1-5102159-0

AMP-LATCH PCB Transition Connectors / DIP Plugs



- **Contact material:** Phosphor Bronze
- **Contact area plating:** Sn
- **Color:** Black
- **Insulation material:** Thermoplastic
- **Flammability:** UL 94V-0
- **Current rating:** 1A
- **Insulation resistance:** $1 \times 10^9 \Omega$
- **Dielectric strength:** 500VAC
- **Temperature rating:** -65 to +105C

DIP PLUGS	
No of Positions	Vertical
10	2-746610-1
14	2-746610-2
16	1-746610-4
20	1-746610-5
26	1-746610-6
34	1-746610-8
40	1-746610-9
50	2-746610-0
60	2-746610-4

RIBBON CABLE CONNECTOR SELECTION GUIDE BY CENTERLINE

RIBBON CABLE CONNECTOR SOLUTIONS										
Ribbon Cable Centerline (P)	Mating FootPrint		Product Family	Contact Rows	Positions	Wire AWG	Termination Style	Operating Temp	Polarization	Mates to
	X	Y								
0.025	0.050	0.100	System 50 Receptacles	Double	select 10-100	30-32	IDC	-65°C - +105°C	Center only	System 50 Shrouded Headers
	See Drawing 5111595 or 111595		System 50 Paddleboard	4 row staggered	select 10-100		IDC	-65°C - +105°C	n/a	PCB
1mm	2mm	2mm	2mm Recept	Double	select 8-50	28	IDC	-65°C - +105°C	Center or none	2mm Modu
0.050	0.050	0.050	Micro-MaTch	Double	select 4-24	20-28	IDC	-40°C - +105°C	Yes, except MOB SMD	Micro-MaTch
	0.100	0.100	AMP-LATCH Receptacles	Double	select 10-64	28-26	IDC	-65°C - +105°C	Military, Military & Center, Dual	Universal & Low Pro Headers, Universal I/O
	0.100	0.100	Female Socket Connectors	Double	select 6-64	30-26	IDC	-55°C - +125°C	Military, Military & Center	Universal & Low Pro Headers, Universal I/O
	0.100	0.100	Universal I/O	Double	select 10-64	26-28	IDC	-65°C - +105°C	--	Novo Receptacles or Female Socket Connectors w/ mil or mil & center polarization
	0.100	0.100	Dip Plugs	Double	select 6-64	30-26	IDC	-65°C - +105°C	--	Dip sockets
	0.100	0.300	Dip Plugs	Double	select 6-64		IDC	-65°C - +105°C	--	Dip sockets
	0.100	0.600	Dip Plugs	Double	select 6-64		IDC	-65°C - +105°C	--	Dip sockets
	See Drawing 746603		EUROLATCH Receptacles	Three row hsg - Two rows loaded	64	30-26	IDC	-65°C - +105°C	--	Eurocard R/A & Vertical Pin Headers

RIBBON CABLE CONNECTOR SOLUTIONS										
Ribbon Cable Centerline (P)	Mating FootPrint		Product Family	Contact Rows	Positions	Wire AWG	Termination Style	Operating Temp	Polarization	Mates to
	X	Y								
0.025	0.050	0.100	System 50 Shrouded Headers	Double	select 10-100	--	SMT, Thru-Hole	-65°C - +105°C	Center, Dual or none	System 50 Receptacles
1mm	2mm	2mm	2mm Modu Headers	Double	select 8-120	--	SMT, Thru-Hole	-65°C - +105°C	Center or none	2mm Receptacles
0.050	0.100	0.100	Low Pro Headers	Double	select 10-60	--	PCB, Solder Thru-Hole	-65°C - +105°C	Center & Dual, Military & Center, Center only	AMPMODU Board Mount Receptacle, Mod IV Receptacle w/ Center, Polarization, Novo Receptacles, Female Socket Connectors
	0.100	0.100	Universal Headers	Double	select 10-64	--	PCB, Solder Thru Hole & Action Pin	-65°C - +105°C	Military, Military & Center, Dual	AMPMODU Board Mount Receptacles, Novo Receptacles, Female Socket Connectors
	0.100	0.100	Dip Sockets	Double	select 6-64	--	PCB, Solder Thru Hole & Action Pin	-55°C - +105°C (Tin) -55°C - +105°C (Gold)	--	Dip Plugs
	0.100	0.300	Dip Sockets	Double	select 6-64	--	PCB, Solder Thru Hole & Action Pin	-55°C - +105°C (Tin) -55°C - +105°C (Gold)	--	Dip Plugs
	0.100	0.600	Dip Sockets	Double	select 6-64	--	PCB, Solder Thru Hole & Action Pin	-55°C - +105°C (Tin) -55°C - +105°C (Gold)	--	Dip Plugs
	0.100	0.100	Eurocard Pin Headers	Three row hsg - Two rows loaded	64	--	PCB, Solder Thru Hole & Action Pin	-55°C - +125°C	--	Euro latch Receptacles

FOR MORE INFORMATION

TE Technical Support Center

USA:	+1 (800) 522-6752
Canada:	+1 (905) 475-6222
Mexico	+52 (0) 55-1106-0800
Latin/S. America:	+54 (0) 11-4733-2200
Germany:	+49 (0) 6251-133-1999
UK:	+44 (0) 800-267666
France:	+33 (0) 1-3420-8686
Netherlands:	+31 (0) 73-6246-999
China:	+86 (0) 400-820-6015

Part numbers in this brochure are RoHS Compliant*, unless marked otherwise.

*as defined www.te.com/leadfree

te.com

© 2012 Tyco Electronics Corporation, a TE Connectivity Ltd. company. All Rights Reserved.

7-1773458-6 CIS PDF 11/12

AMP-LATCH, AMPMODU, EUROLATCH, Micro-MaTch, TE Connectivity and the TE connectivity (logo) are trademarks. Other logos, product and company names mentioned herein may be trademarks of their respective owners.

While TE has made every reasonable effort to ensure the accuracy of the information in this brochure, TE does not guarantee that it is error-free, nor does TE make any other representation, warranty or guarantee that the information is accurate, correct, reliable or current. TE reserves the right to make any adjustments to the information contained herein at any time without notice. TE expressly disclaims all implied warranties regarding the information contained herein, including, but not limited to, any implied warranties of merchantability or fitness for a particular purpose. The dimensions in this brochure are for reference purposes only and are subject to change without notice. Specifications are subject to change without notice. Consult TE for the latest dimensions and design specifications.

