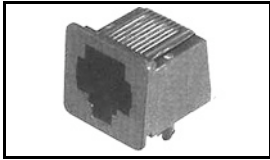


## 5520242-3 Product Details

[Share](#) [Print](#) [Email](#)




5520242-3

TE Internal Number: 5520242-3

 Active

[View 3D PDF](#)

### PCB Mounted Jacks - Single Port, Multi-port and Stacked

 Always EU RoHS/ELV Compliant  
(Statement of Compliance)

#### Product Highlights:

- Connector
- Preloaded
- Single Port Configuration
- 1 x 1 Jack Configuration
- Jack Type = RJ25

[View all Features](#)

#### Quick Links

- ▶ [Pricing & Availability](#)
- ▶ [Search for Tooling](#)
- ▶ [Product Feature Selector](#)
- ▶ [Contact Us About This Product](#)

[Add to My Part List](#)

[Request Sample](#)

[Find Similar Products](#)

[Buy Product](#)

### Documentation & Additional Information

#### Product Drawings:

- [PRINTED CIRCUIT BOARD MODULAR JACK ASSEMBLY SIDE ENT...](#) (PDF, English)

#### Catalog Pages/Data Sheets:

- None Available

#### Product Specifications:

- [Modular Plugs, Thru-Hole and Surface Mount Jacks, Da...](#) (PDF, English)

#### Application Specifications:

- [Modular Jacks](#) (PDF, English)

#### Instruction Sheets:

- None Available

#### CAD Files: (CAD Format & Compression Information)

- [2D Drawing](#) (DXF, Version A)
- [3D Model](#) (IGES, Version A)
- [3D Model](#) (STEP, Version A)

[List all Documents](#)

#### Additional Information:

- [Product Line Information](#)

#### Related Products:

- [Tooling](#)

### Product Features (Please use the Product Drawing for all design activity)

#### Product Type Features:

- Product Type = Connector
- Jack Type = RJ25
- PCB Mounting Orientation = Side Entry (Right Angle)
- PCB Mount Style = Through Hole
- Performance Category = Cat 3
- LED = Without
- Grounding Options = Without
- Panel Stops = Without
- Keyed = No
- Profile = Standard
- Color = Black
- Latch Style = Standard
- PCB Mount Retention Type = 3 Quarter/PAC-Man Style Posts

#### Contact Features:

- Solder Tail Contact Plating = Tin over Nickel
- Contact Plating, Mating Area, Material = Gold (50)
- Contact Base Material = Phosphor Bronze

#### Housing Features:

- Housing Material = PBT - GF

#### Configuration Features:

- Preloaded = Yes
- Port Configuration = Single
- Jack Configuration = 1 x 1
- Number of Positions = 6
- Shielded = No
- Number of Contacts Loaded = 6

**Mechanical Attachment:**

- [Panel Mount Retention](#) = With
- Flanged = Yes

**Termination Features:**

- [Termination Method to PC Board](#) = Solder

**Dimensions:**

- [Height \(mm \[in\]\)](#) = 17.40 [0.685]
- [PCB Tail Length \(mm \[in\]\)](#) = 3.44 [0.135]
- [PCB Thickness, Recommended \(mm \[in\]\)](#) = 1.57 [0.062]

**Body Features:**

- [Inverted Jack Face](#) = No

**Industry Standards:**

- [RoHS/ELV Compliance](#) = RoHS compliant, ELV compliant
- [Lead Free Solder Processes](#) = Wave solder capable to 240°C, Wave solder capable to 260°C, Wave solder capable to 265°C
- [RoHS/ELV Compliance History](#) = Always was RoHS compliant
- [UL Flammability Rating](#) = UL 94V-0

**Packaging Features:**

- [Packaging Method](#) = Tray

**Product Availability:**

- [Region](#) = Asia, North America

**Other:**

- [Brand](#) = AMP

**Corporate Information**

[About TE](#)  
[Investors](#)  
[News Room](#)  
[Supplier Portal](#)  
[Careers](#)  
[Terms & Conditions](#)  
[Privacy Policy](#)

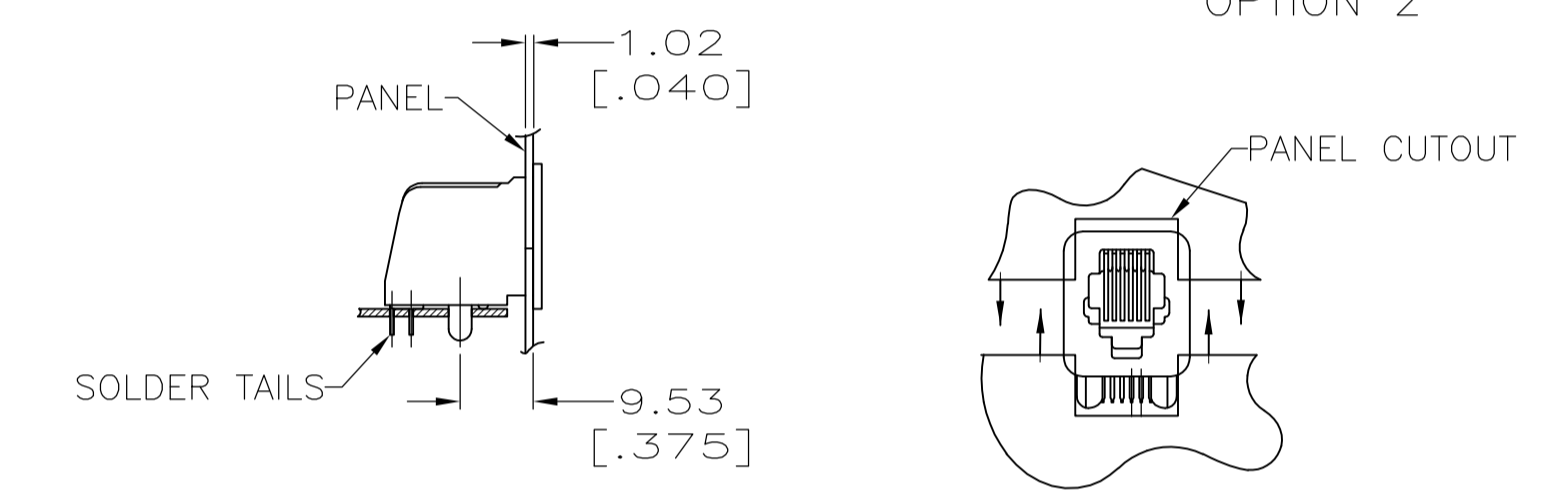
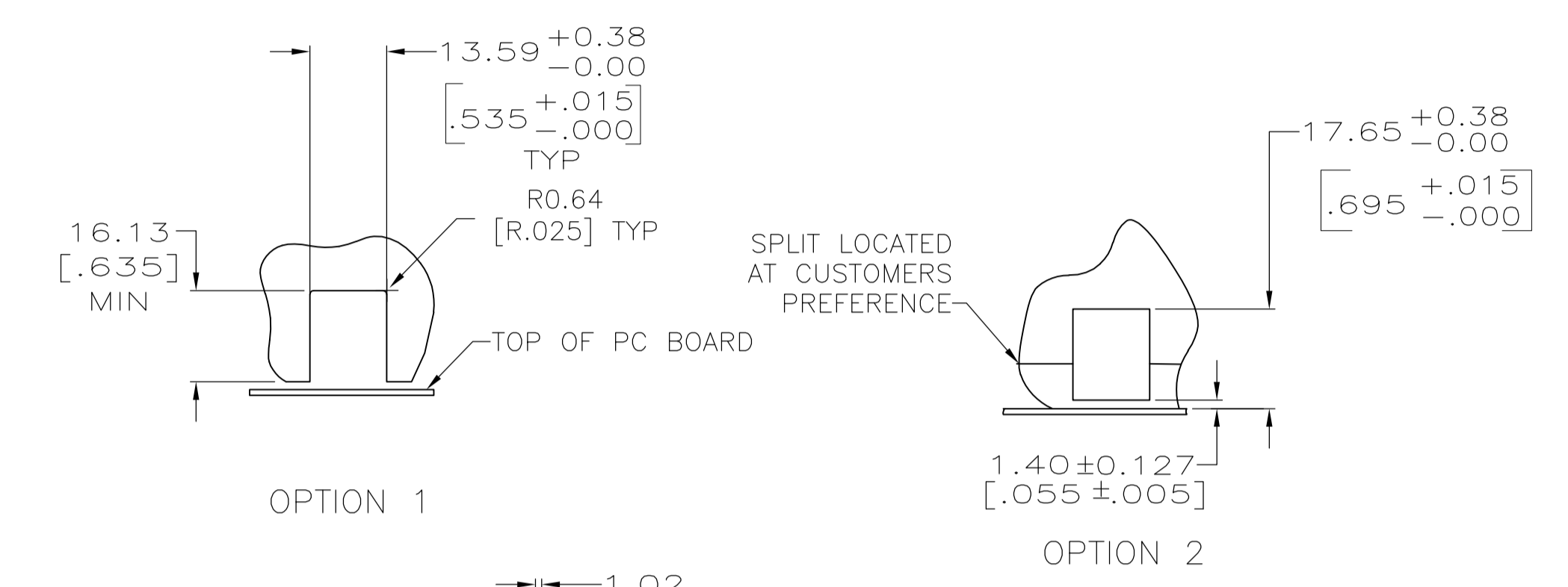
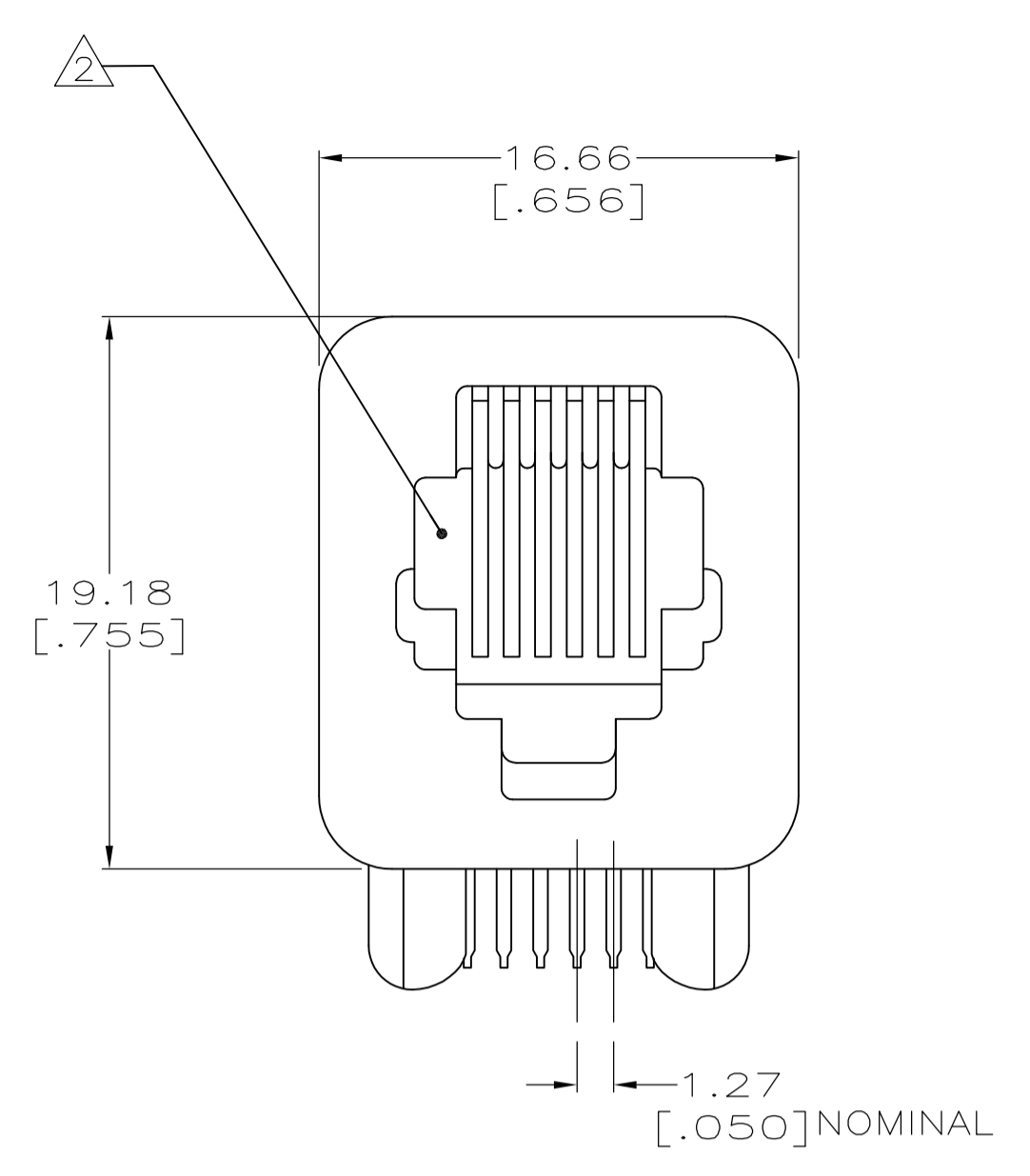
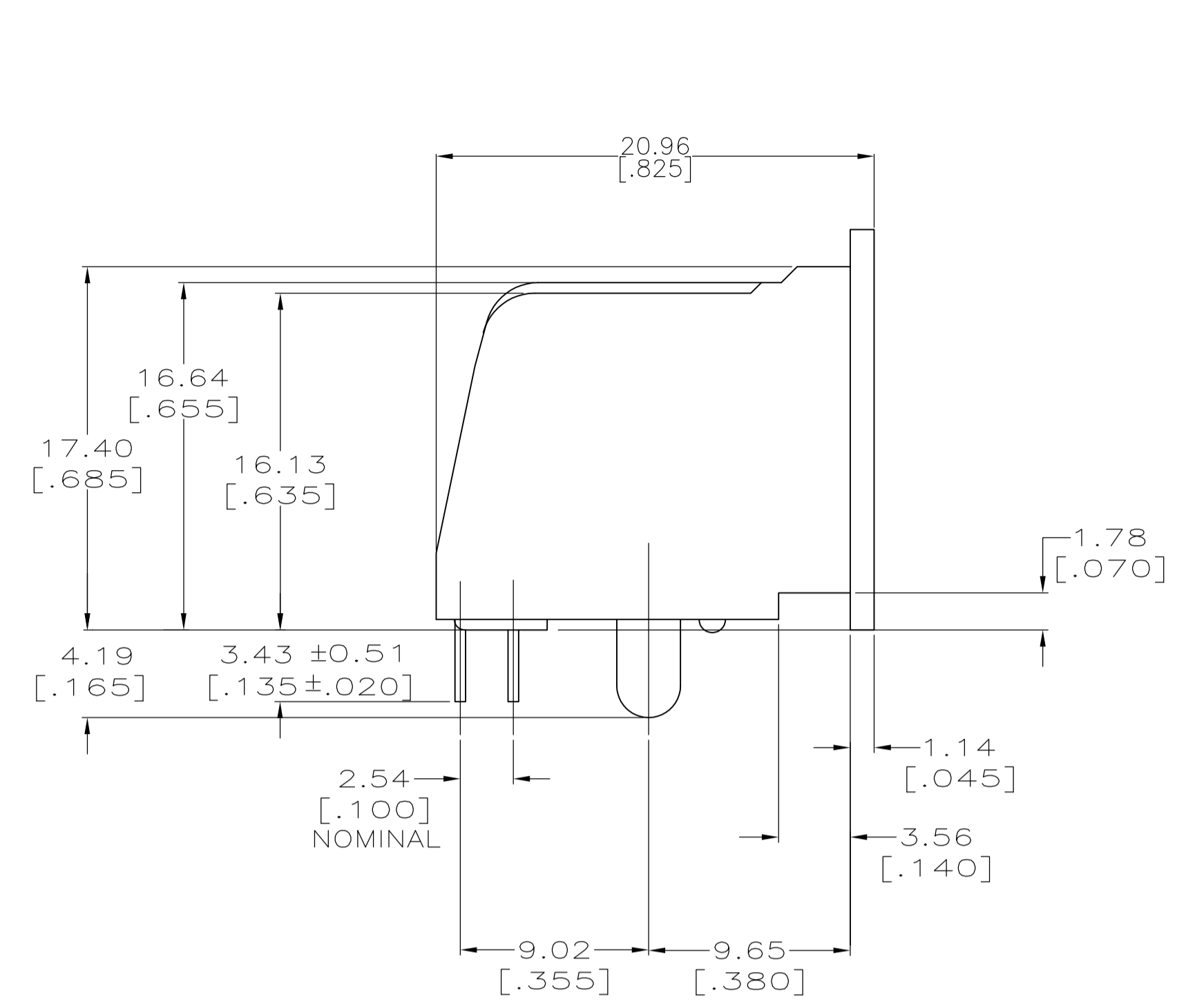
**Quick Links**

[Distributor Inventory](#)  
[Product Cross Reference](#)  
[Documents & Drawings](#)  
[Product Compliance Support Center](#)  
[Site Map](#)

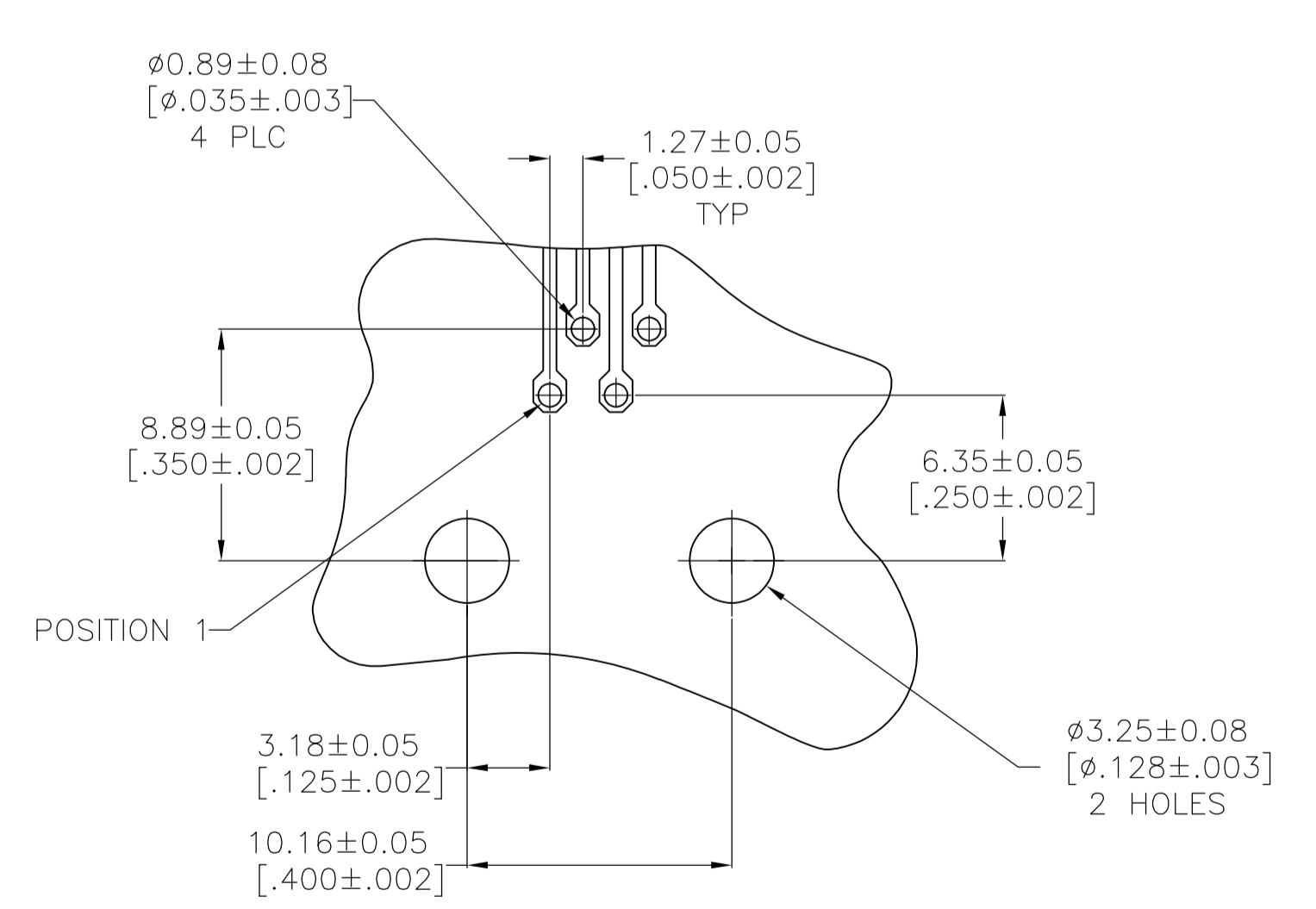
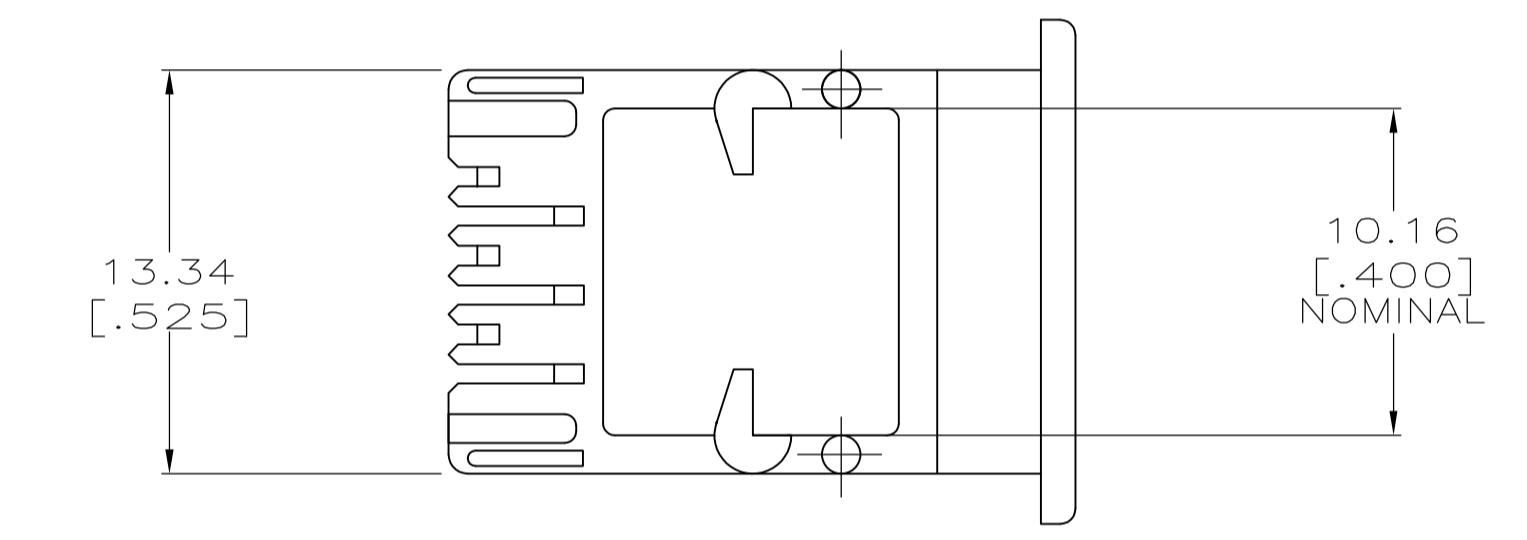
**Customer Support**

[Email or Chat With Us](#)  
[Find a Phone Number](#)  
[Knowledge Base](#)  
[Manage Your Account](#)

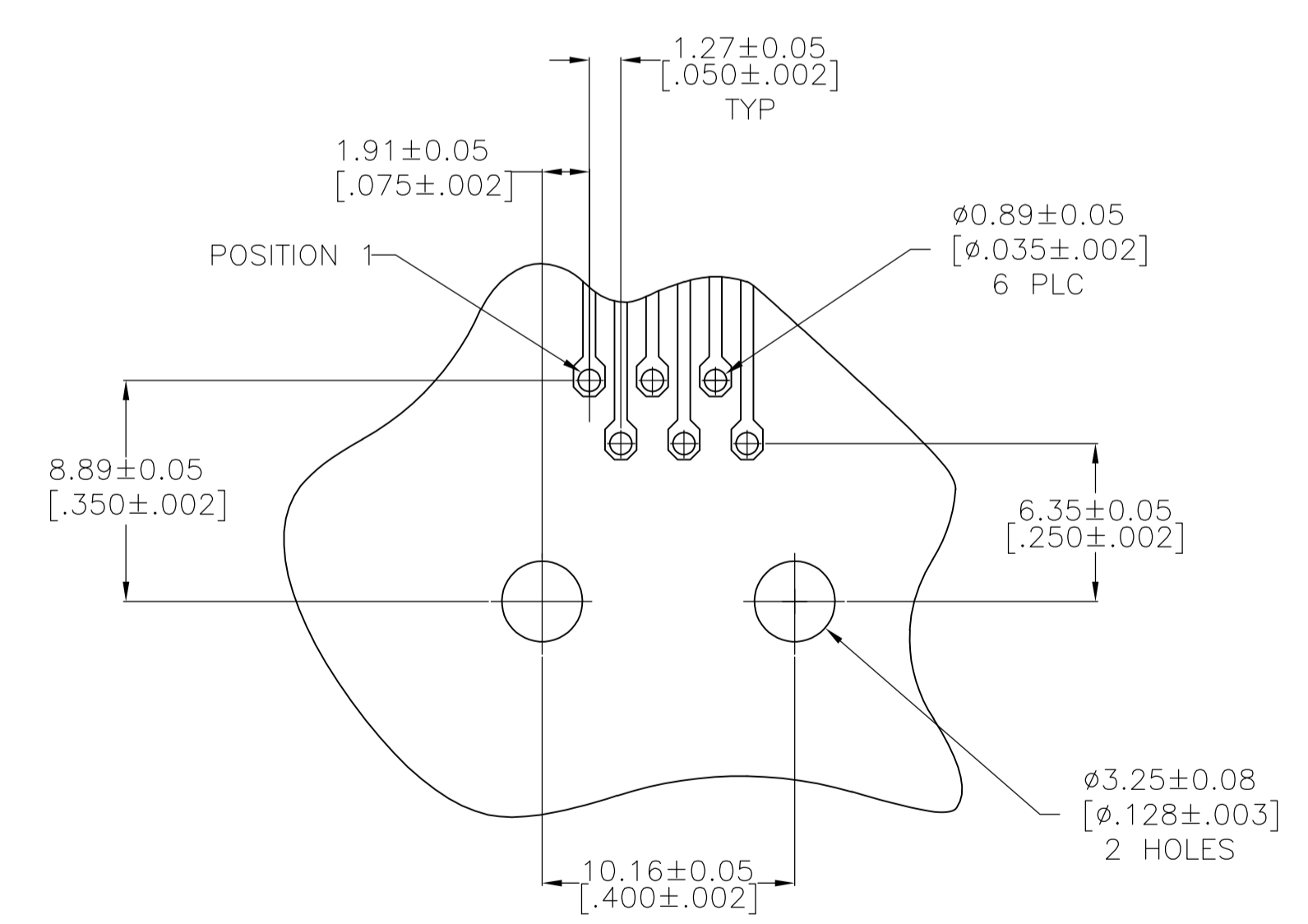
**Keep Me Informed**



SUGGESTED PANEL CUTOUT GUIDELINES  
SCALE 1:1



RECOMMENDED PRINTED CIRCUIT BOARD LAYOUT  
FOR FOUR CONTACTS  
COMPONENT SIDE



RECOMMENDED PRINTED CIRCUIT BOARD LAYOUT  
FOR SIX CONTACTS  
COMPONENT SIDE

- 1 MATERIAL:  
HOUSING - PBT POLYESTER, BLACK.  
TERMINAL - 0.36 [.014] THICK PHOS BRONZE PLATED WITH 1.27µm [.000050] MINIMUM THICK HARD GOLD IN LOCALIZED GOLD PLATE AREA AND 3.81µm [.000150] THICK MATTE TIN IN SOLDER AREA OVER 1.27µm [.000050] MINIMUM THICK NICKEL UNDERPLATE.
- 2 CAVITY CONFORMS TO FCC RULES AND REGULATION PART 68 AND REA BULLETIN 345-81, PE-76 SPECIFICATION FOR MODULAR TELEPHONE HARDWARE.
- 3 ALL DIMENSION ARE MAXIMUM UNLESS OTHERWISE SPECIFIED.

6	5520242-3
4	5520242-2
CONTACTS	PART NO.

THIS DRAWING IS A CONTROLLED DOCUMENT.		DIN J. ALCORTA - 17JUN2005 DOCK45		Tyco Electronics Corporation Harrisburg, PA 17105-3608	
DIMENSIONS: mm [INCHES]		TOLERANCES UNLESS OTHERWISE SPECIFIED:		APVD S. FLICKINGER 17JUN2005 NAME	
0 PLC ± -		1 PLC ± -		PRODUCT SPEC 108-1163	
2 PLC ± -		3 PLC ± -		APPLICATION SPEC 114-2048	
4 PLC ± -		ANGLES ± -		SIZE CAGE CODE DRAWING NO. RESTRICTED TO	
MATERIAL 1		FINISH 1		WEIGHT - A1 00779 C=5520242	
CUSTOMER DRAWING		SCALE 4:1		SHEET 1 OF 1 REV C	